



GOVERNMENT OF NATIONAL CAPITAL TERRITORY OF DELHI

**BUSINESS REGISTER
IN
DELHI**



2015

DIRECTORATE OF ECONOMICS & STATISTICS
3RD FLOOR, B-WING, VIKAS BHAWAN-2,
CIVIL LINES, DELHI – 110054

DIRECTORATE OF ECONOMICS & STATISTICS
3RD FLOOR, B-WING, VIKAS BHAWAN-2,
CIVIL LINES, DELHI – 110054
Website: <http://des.delhigovt.nic.in>

Preface

The present report is the first of its kind brought out by this Directorate under the scheme “Improvement of Statistical System of State & Districts”, Government of India on the basis of data collected through field survey of enterprises registered with various registering authorities upto March, 2015. This report gives the basic estimates on all establishments and employment therein pursuing various economic activities relating to production and or distribution of goods and or services in Delhi. The Business Register also contains information on items not yet collected under various registers and also provide useful information at the lowest level of administration, which is needed for inclusive development of the state and country as a whole.

The data in the report is presented district-wise and act-wise which provides various indicators of economic activities in Delhi. Detailed information on various characteristics of the entrepreneurial activities viz. kind of ownership, nature of operation, employment status, registration particulars, etc. are also presented in the report. The data generated through Business Register survey will provide an ideal frame for conducting sample surveys and undertaking studies of various economic activities for finding their pattern and trend in Delhi.

The report has been prepared by DPA unit of this Directorate under the guidance of Sh. Ashok Kumar, Joint Director, Sh. C.K. Dutta, Dy. Director. The special efforts were made by staff of DPA Unit under the supervision of Sh. K.R. Chhibber, Assistant Director to bring out this report deserves special appreciation. The field work of the survey was supervised by the officers/officials of Directorate of Economics & Statistics, Delhi. The special efforts put in by EDP Unit under able guidance of Sh. P.K. Srivastava, System Analyst of this Directorate are highly appreciable. The efforts put by the contractual enumerators for collection of data are highly recommendable. This Directorate is also thankful to Central Statistics Office, M/o Statistics & Programme Implementation, Govt. of India for the technical guidance and financial assistance provided by them.

We are also grateful to the entrepreneurs who have made this Business Survey a success by providing requisite information to enumerators.

December 2016

D.P. Dwivedi
Director and Special Secretary

TABLE OF CONTENTS	
Contents	Page
Section One	1-3
Introduction	1
Definitions of Business and Business Register	2
Scope and Coverage	2
Benefits of Business Register	2
Business Register Vs. Economic Census	3
Section Two	4-7
Methodologies for development of creation and updation of BR	4
Section Three	8-22
Summary Findings	
Statement 1: Traced and Working Enterprises and Employment therein	8
Statement 2: Act wise/Registering Authority wise Total Number of Registered and Traced & Working enterprises in Delhi	10
Statement 3: Act wise Distribution of traced and working enterprises and Employment therein	12
Statement 4: Distribution of Traced and Working enterprises on the basis of year of Operation	14
Statement 5: Distribution of Enterprises as per employment size class	15
Distribution as per NIC-2 Digit (2008) classification	16
Section Four	17-48
Act-wise Analysis	
4.1 Companies Act, 1956	17-20
4.2 Shops and Commercial Establishments Act	21-24
4.3 Societies Registration Act	25-28
4.4 Co-Operative Societies Act	29-32
4.5 Factories Act, 1948	33-36
4.6 Directorate of Industries (MSME Act)	37-40
4.7 Khadi and Village Industries Board	41-44
4.8 Food & Safety Standards Regulations, 2011	45-48
Annexure I	
Business Register Schedule	(i)
Annexure II	
NIC 2008 Group-3-digit NIC Code along with descriptions	i-v
Appendix	[A1]-[A8]

SECTION ONE

SECTION ONE

INTRODUCTION

Business Register essentially means the list of all establishments pursuing various economic activities relating to production and/or distribution of goods and/or services at a place. Such a list when complete in all respect will provide an ideal frame for conducting sample surveys and undertaking studies of various economic activities for finding their pattern and trend in the country.

At present an up-to-date frame of enterprises at the national level is available only in respect of the units/ factories covered under the Annual Survey of Industries (ASI). The ASI presently covers the relatively bigger units belonging to manufacturing and repair sub-sectors that are registered under sections 2m (i) and 2m (ii) of the Factories Act 1948 or under the Bidi & Cigar Workers (Condition of Employment) Act. For the other sectors, no such updated and satisfactory frame of bigger units/ enterprises exists at present. For planning any survey of such units, like the Survey of Non-Manufacturing Industries (SNMI), it would be desirable to develop a frame of establishments along with certain basic items of information for all sub-sectors such as trade, hotels and restaurants, transport, storage, communication, real estate, legal & business services etc. popularly known as Business Register.

The Business Register would reduce burden on respondents and in turn induce respondents to provide proper information on items not yet collected under various registers, reduce survey cost, and also

provide useful information at the lowest level of administration, which is needed for inclusive development of the country.

Definitions of Business and Business Register

Business may be defined as an enterprising entity of a person, partnership or corporation/organisation etc., engaged in commerce, manufacturing, or service whereas, Business Register (BR) is a list of such business establishments and enterprises. It serves as a statistical tool for the preparation and coordination of surveys. It is an important source of information for the statistical analysis of the business population and its demography.

Scope and Coverage

In theory, Business Register records all enterprise groups, enterprises and local units that are active in the national economy. Geographically, it covers all the States and Union territories of the country within the domain of Economic Census. It follows by and large the concepts and definitions of Economic Census.

Benefits of BR

The benefits of the BR to various users are as under:

For the Private entrepreneurs

(a) Establishing business profile for a specific area;

- (b) Reduction in response burden by designing a standard format and advising the enterprises to fill up the same so that the number of existing returns can be reduced to a bare minimum;
- (c) Analyzing existing potential business markets; and

For the Government

- (a) Reducing administrative burden; and
- (b) Improving efficiency in registration system.
- (c) National Accounting and effective policy formulation, monitoring and planning.

Business Register Vs. Economic Census

Economic Census captures the information on all the enterprising activities in the country at a given point of time. However, the entities represented by the units held in business registers are not static. Entities are created, they may change form and they eventually disappear. Over a period of time, their characteristics may also change. Therefore BR should have procedures for recording these demographic events. The BR may be updated at least annually to record creations and deletions of units, as well as changes in their activity, address and characteristics/ stratification variables.

SECTION TWO

SECTION TWO

Methodology for preparation of Business Register

STEP-1:

For preparation of Business Register, the Delhi State undertook the following steps in respect of existing registered enterprises:

- i) Identification of State/District level Registering Authorities meant for registration of legal entities with complete official addresses and designation of the officer responsible for providing information; and
- ii) Listing of items of statutory information at the time of registration separately for each type of institution
- iii) Development of database in electronic form for consolidation of all such information available.

STEP-2:

Ideally the Business Register is exhaustive and should include all enterprises and establishments. Due to the presence of vast informal sector, in the initial effort, the following Acts and the Registering Authorities have been identified and kept in focus. However a few more relevant Acts were also considered

S. No.	Acts/Authorities considered	Corresponding Registering Authorities	Coverage
1	Companies Act, 1956	Registrar of Companies	All companies
2	Factories Act, 1948	The Director, Directorate of Industrial, Safety & Health, Labour Department, GNCTD	Factories in which at least ten workers were employed on any day of the preceding twelve months and were engaged in manufacturing process being carried out with the aid of power or in which twenty or more than twenty workers were working on any day of the preceding twelve months in manufacturing process being carried out without the aid of power
3	Shops and Commercial establishments Act	Labour Commissioner	Shops and commercial establishments
4	Societies Registration Act	Commissioner/ Deputy Commissioner	Societies/ NGO/SHG (Note: Business Register for NPI has been prepared, it needs to be updated only)
5	Cooperative Societies Act	Registrar of Cooperative Societies, GNCTD	Cooperative Societies may be credit or consumer cooperatives.
6	Khadi and Village Industries Board	Deputy Director/HOO, Delhi Khadi & Village Industries Board	Khadi and cottages industrial units
7	Directorate of Industries (District Industries Centre)	General Manager/Joint or Deputy Commissioner, District Industries Centre	Industrial units or firms: private limited or public limited, micro, small or medium.
8	Food & Safety Standards Regulations, 2011	The Commissioner (Food Safety) Department of Food Safety,	Food Business Operators

1. The list of establishments was prepared in respect of each of the above Act/ Authority.

STEP-3:

1. All the district level lists were segregated up to the lowest administrative unit for easy identification in the field. Names of districts, towns, villages, pin codes were used for segregation of list of a geographical unit.
2. After the segregation, 11 districts of Delhi were divided among 5 Teams comprising of Team Leaders (officers of DES) and team members (officials of DES) for guidance and control of field work of Business Register.
3. Enumerators were appointed on Honorarium basis to canvas the Business Register Schedule placed at Annex-I.
4. During the field survey, enumerators checked the existence of the establishments with fixed site by visiting each establishment and corrected the particulars like address etc. if required, and marked those establishments which were not found in existence or found untraceable in the list of enterprises.

STEP-4:

After canvassing the Business Register Schedule, enumerators handed over the schedules to the respective Team Leaders. The assignment of NIC 2008 codes of the activities at 3 digit level was undertaken by the respective team .Thereafter, the filled-in scrutinized

schedules were handed over to the EDP unit of DES for data entry work. After the data entry of these lists, the System Analyst (DES) generated the Authority/Act-wise final lists of existing enterprises.

SECTION THREE

SECTION THREE

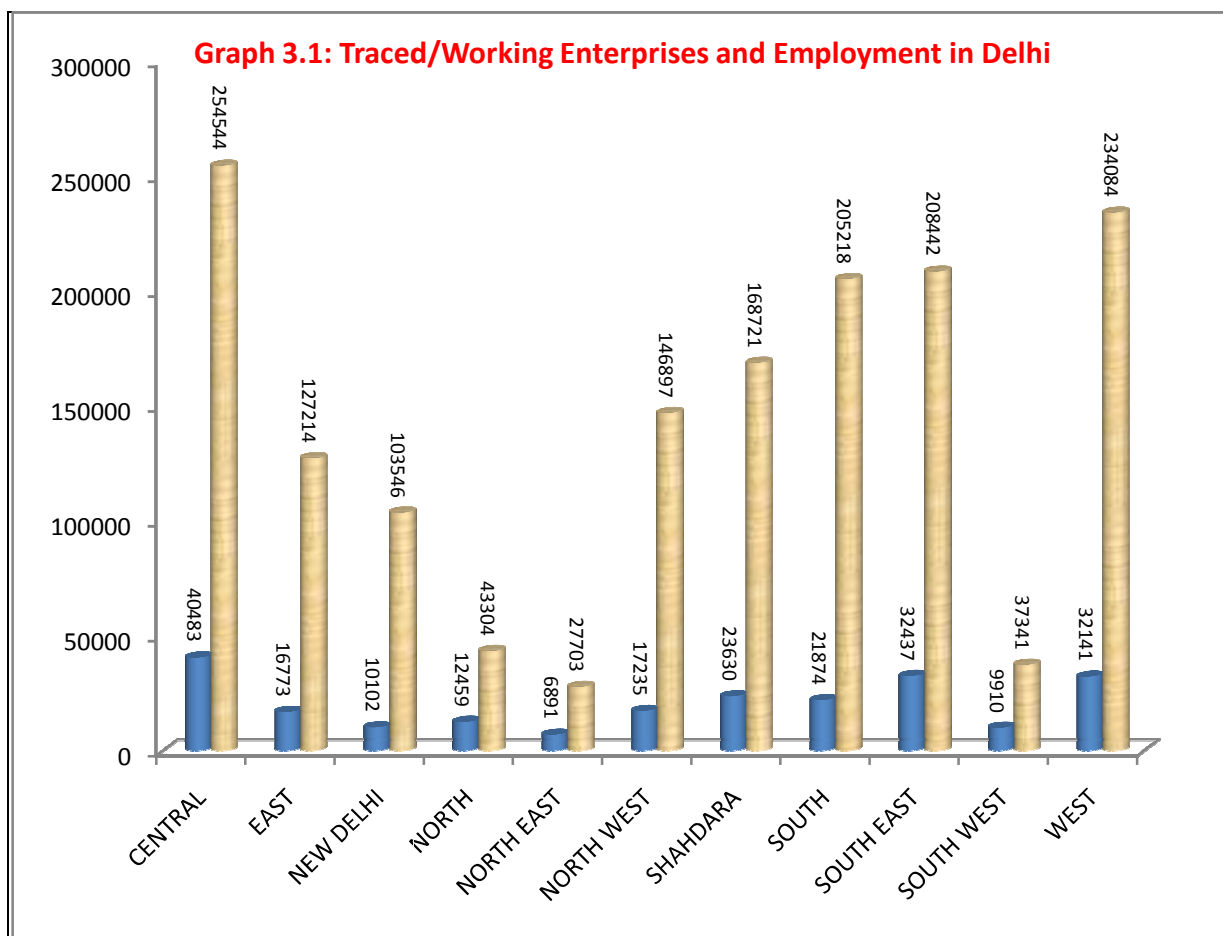
SUMMARY FINDINGS

For preparation of Business Register of enterprises/establishments in Delhi, data were collected from eight registering authorities viz. Society Registration Act, Companies Act 1956, MSME Act 2006, Factories Act 1948, Shop & Establishment Act, Registrar of Cooperative Society, Khadi & Village Industries Board and Food Safety Act. In this regard, data of about 4.75 lakh enterprises registered under Eight Acts/Authorities upto 31.03.2015 were obtained through their websites and through personal visits/correspondence.

In Delhi out of 4.75 lakh registered enterprises 2,23,935 enterprises were found traced & working in which about 15.57 lakh workers were employed.

Statement 3.1: Traced & Working Enterprises and Employment therein

District	Enterprises	%	Employment	%
Central	40483	18.08	254544	16.35
East	16773	7.49	127214	8.17
New Delhi	10102	4.51	103546	6.65
North	12459	5.56	43304	2.78
North East	6891	3.08	27703	1.78
North West	17235	7.70	146897	9.43
Shahdara	23630	10.55	168721	10.84
South	21874	9.77	205218	13.18
South East	32437	14.49	208442	13.39
South West	9910	4.43	37341	2.40
West	32141	14.35	234084	15.03
All	223935	100.00	1557014	100.00



The Statement 3.1 depicts that maximum number of registered enterprises 40483 (18.08%) were reported in Central district, followed by 32437 (14.49%) in South East and 32141 (14.35%) in West district. The lowest number of registered enterprises 6891 (3.08%) were found in North East district of Delhi.

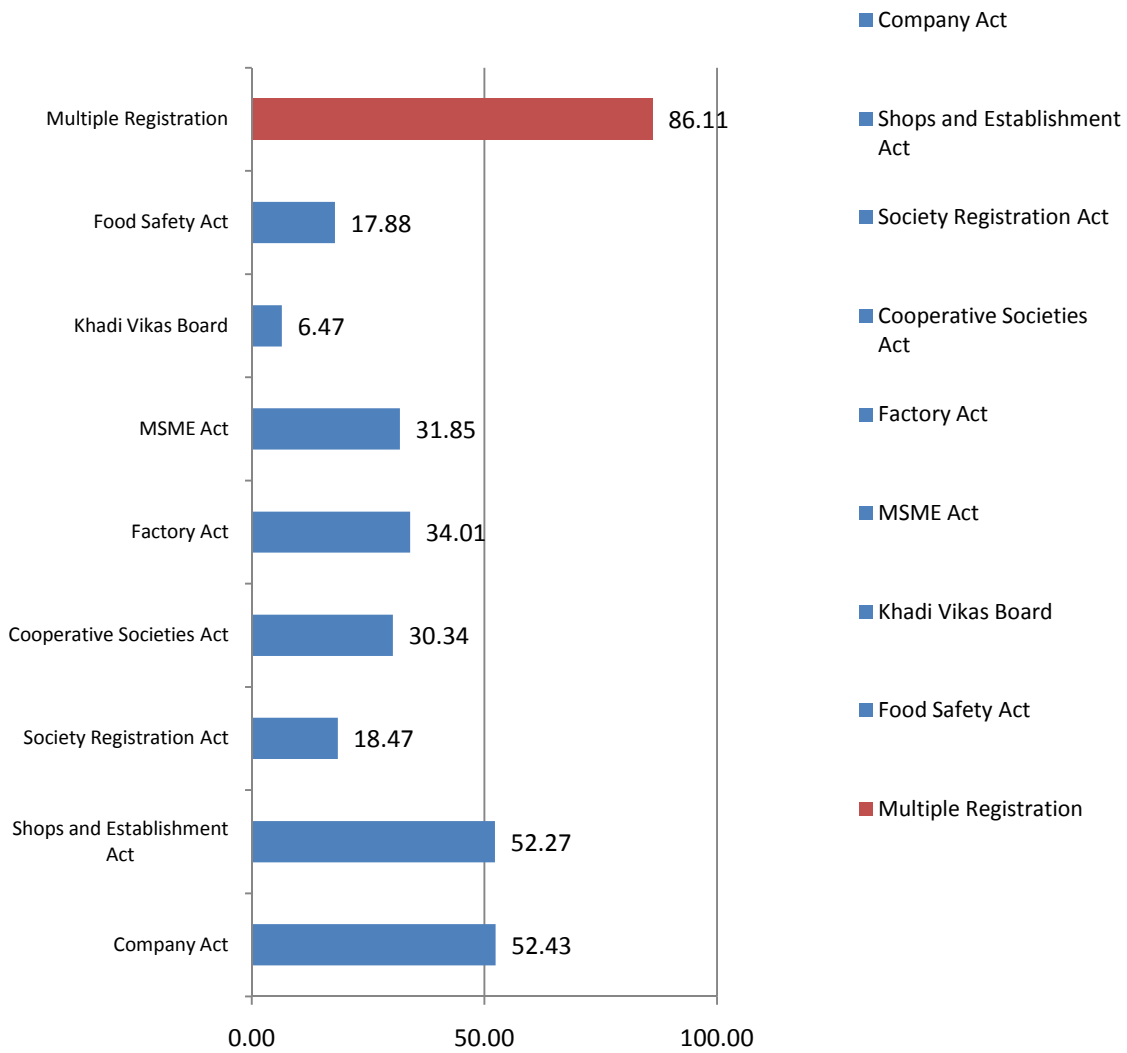
Following the above pattern the maximum number of workers 254544 (16.35%) were employed in Central district. However, the second highest number of workers i.e. 234084 (15.03%) were employed in West district, followed by 208442 (13.39%) workers in South-East district of Delhi.

Statement 3.2: Act-wise/Registering Authority wise total number of registered and Traced & Working enterprises in Delhi

Act/Registering Authority	No. of Traced & Working Enterprises	Total No. of Act-wise Registered Enterprises	% of Traced & Working Enterprise to Registered Enterprises
Company Act	103969	198295	52.43
Shops and Establishment Act	114764	219549	52.27
Society Registration Act	8641	46782	18.47
Cooperative Societies Act	27	89	30.34
Factory Act	2725	8012	34.01
MSMED Act	4025	12636	31.85
Khadi Vikas Board	59	912	6.47
Food Safety Act	279	1560	17.88
Total Registration (in all act)	234489	487835	48.07
Multiple Registration	10554	12257	86.11
Total Enterprises	223935	475578	47.09

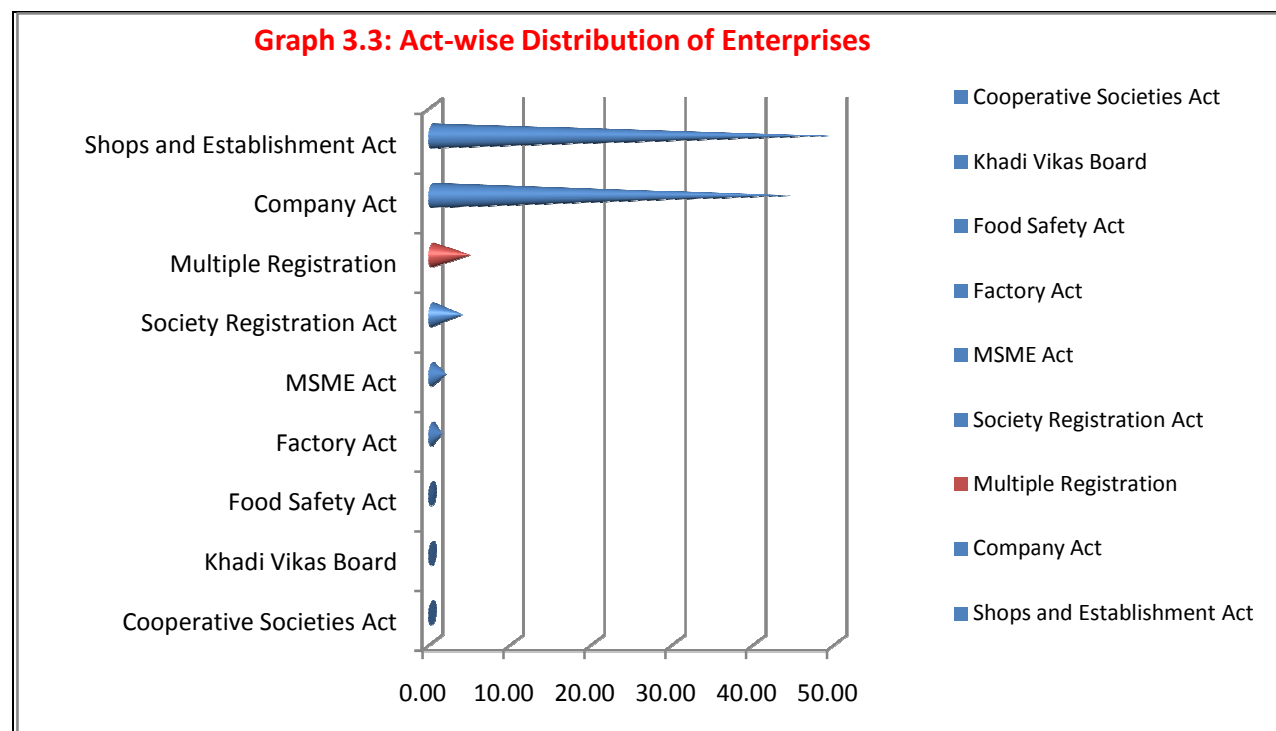
In Delhi out of 4,75,578 enterprises registered under eight acts with different registering authorities, 2,23,935 enterprises i.e. 47.09% was found traced/working.

Graph 3.2: Percentage of Traced & Working Enterprise to Total Registered Enterprises



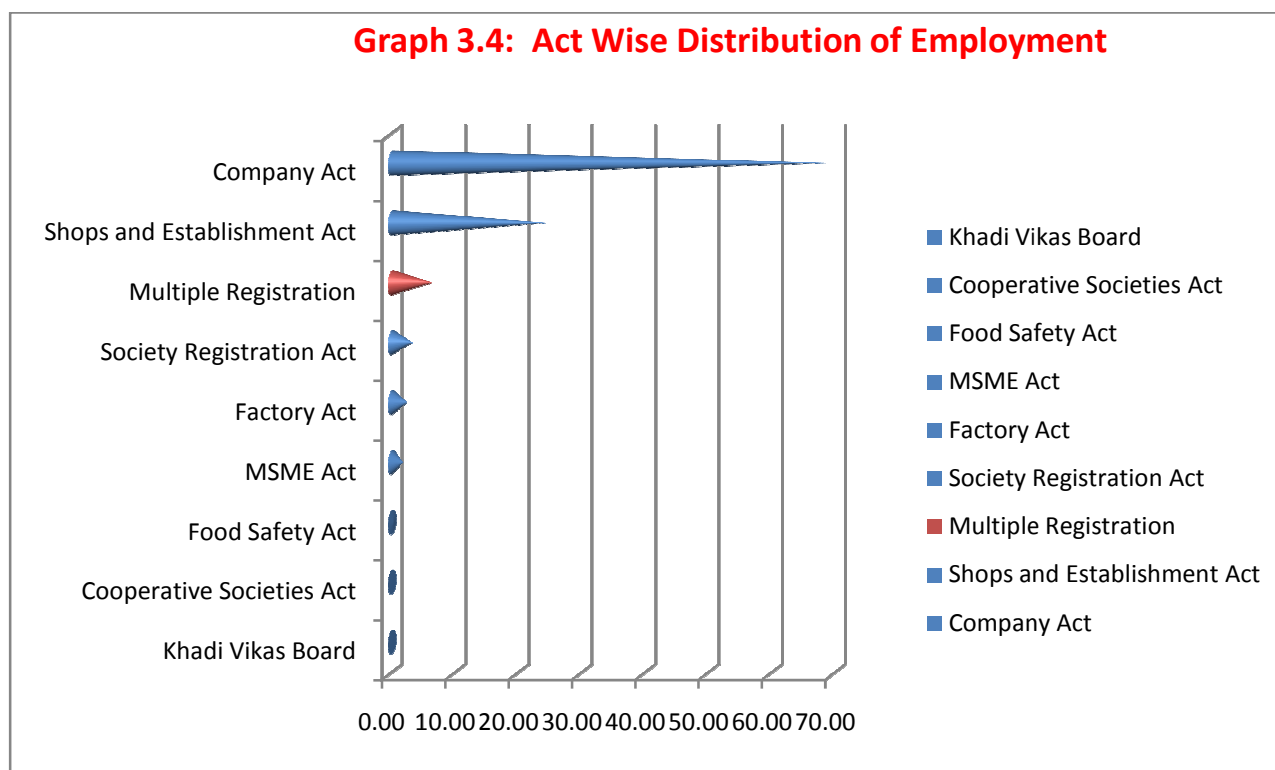
Statement 3.3: Act-wise distribution of Traced & Working Enterprises and Employment therein

Act	No. of Traced & Working Enterprises	%	Employment	%
Company Act	103969	44.34	1132169	68.41
Shops and Establishment Act	114764	48.94	400392	24.19
Society Registration Act	8641	3.69	51918	3.14
Cooperative Societies Act	27	0.01	229	0.01
Factory Act	2725	1.16	38693	2.34
MSME Act	4025	1.72	28503	1.72
Khadi Vikas Board	59	0.03	189	0.01
Food Safety Act	279	0.12	2764	0.17
Total Registration (in all Acts)	234489	100.00	165485	100.00
Multiple Registration	10554	4.51	97843	5.91
Total Enterprises	223935	100.00	1557014	100.00



Primarily enterprises registered under different Acts were visited by enumerators and district-wise information was collected from these units.

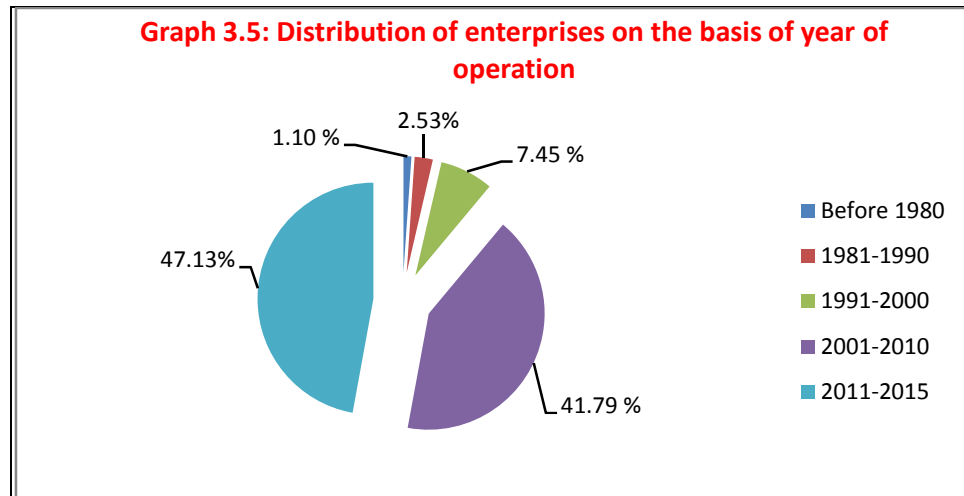
From the above Statement 3.3, it is evident that 10554 enterprises were registered with multiple registering authorities. The highest proposition i.e. about 49% enterprises were registered under Shop and Establishment Act in Delhi followed by about 44% registered under Companies Act. The lowest proportion i.e. 0.01% of Traced & Working enterprises was registered under Cooperative Societies Act.



It is evident from the above statement that although highest number of working enterprises were found registered under Shops & Establishment Act but in respect of employment, enterprises registered under Company Act employed highest number of persons i.e. 68.53%, followed by Shops & Establishment Act with 24.24% employment. The enterprises having multiple registrations with various registering authorities employed 97843 persons (5.91%). Detail of enterprises along with persons employed therein is depicted in appendix.

Statement 3.4: Distribution of Traced & Working enterprises on the basis of year of operation.

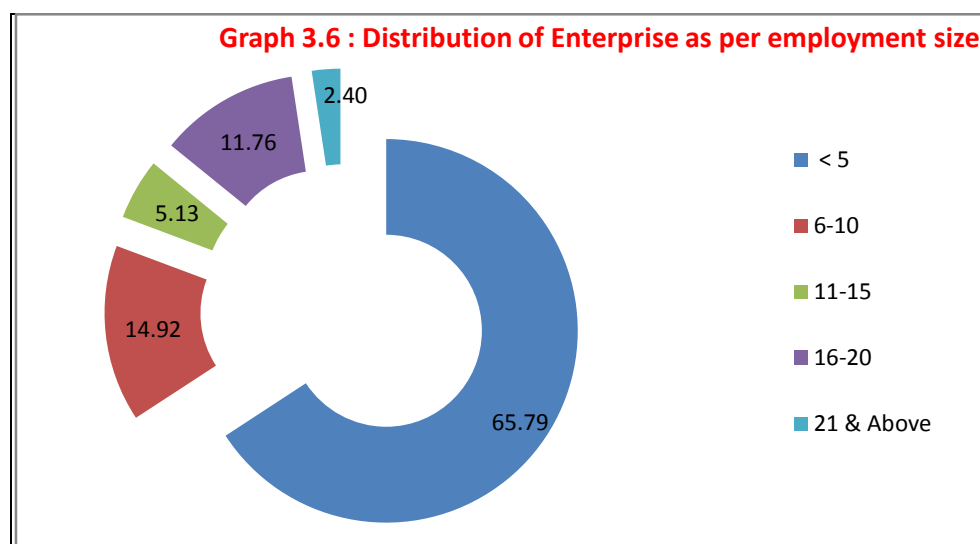
Year	Total	%
Before 1980	2463	1.10
1981-1990	5671	2.53
1991-2000	16690	7.45
2001-2010	93580	41.79
2011-2015	105531	47.13
All	223935	100.00



Breakup of Traced & Working enterprises according to year of initial operation is depicted in Statement 3.4. The statement shows the increasing trend according to year of initial operation. This may be due to improvement in favorable conditions and other factors required for operating the enterprises. Maximum enterprises i.e. 88.92% were started in Delhi between the period 2001-2015. During the period 2001-2010, 41.79% and during the period 2011-2015, 47.13% enterprises were started their operation.

Statement 3.5: Distribution of Enterprises as per Employment Size Class

Employment Size	Enterprises	%
≤ 5	147338	65.79
6-10	33404	14.92
11-15	11493	5.13
16-20	26325	11.76
21-25	1389	0.62
26-30	1019	0.46
31-35	554	0.25
36-40	557	0.25
41-45	253	0.11
46-50	411	0.18
51-100	840	0.38
> 100	352	0.16
Total	223935	100



It can be clearly concluded from the above statement that out of 223935 working enterprises about 1.47 lakh (65.79%) enterprises were having employment size less than equal to 5 workers. It is very interesting to see that in Delhi, 97.60% of the total working & traced enterprises were having employment size less than equal to 20 workers. Only 1192 (0.54%) traced & working enterprises were having more than 50 workers.

Distribution as per NIC-2 Digit (2008) classification

Registered enterprises and employment therein is classified on the basis of NIC (2008)-2 digit level classification in Statement 3.6. It shows that in Delhi, the highest number of enterprises i.e. 20.81% pertains to NIC-47 i.e. Retail trade (except of motor vehicles and motorcycles), employing 11.87% persons, followed by 9.13% in Wholesale trade, except of motor vehicles and motor cycles, engaging 8.43% persons and 7.84% pertains to activities of head offices, management consultancy activities employing 8.59% persons . In Delhi, the lowest proportion (0.01%) of registered working enterprises were found to be engaged in Sewerage (NIC-37) and Veterinary Activities (NIC-75) and only 0.01% employment was reported in each of these activity. Detail of establishments & persons employed as per NIC 2 digit classification is given at Appendix in table 5.

SECTION FOUR

ACT-WISE ANALYSIS

SECTION 4.1

COMPANIES ACT, 1956

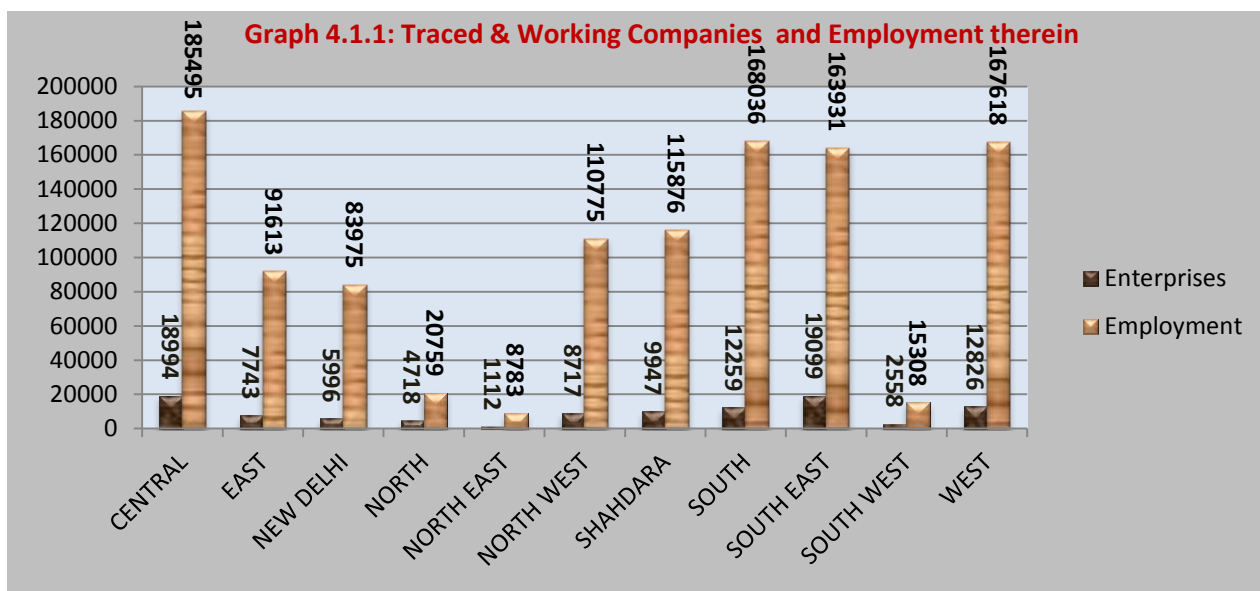
INTRODUCTION

The Companies Act 1956 enables companies to be formed by registration, and set out the responsibilities of companies, their directors and secretaries. The Companies Act 1956 is administered by the Federal Government of India through the Ministry of Corporate Affairs and the Offices of Registrar of Companies, Official Liquidators, Public Trustee, Company Law Board, Director of Inspection, etc. The Registrar of Companies (ROC) handles incorporation of new companies and the administration of running companies.

In common parlance company means an association of persons formed for some common object such as the economic gain of its members . However, in law any association of persons for any common object can be registered as a company . The main object need not to be the economic gain of its members e.g. a company can be formed for purposes such as charity ,research, advancement of knowledge etc.

Statement 4.1.1: Traced & Working Enterprises registered under Companies Act in Delhi and Persons Employed therein

District	Enterprises	Percentage	Employment	Percentage
Central	18994	18.27	185495	16.38
East	7743	7.45	91613	8.09
New Delhi	5996	5.77	83975	7.42
North	4718	4.54	20759	1.83
North East	1112	1.07	8783	0.78
North West	8717	8.38	110775	9.78
Shahdara	9947	9.57	115876	10.23
South	12259	11.79	168036	14.84
South East	19099	18.37	163931	14.48
South West	2558	2.46	15308	1.35
West	12826	12.34	167618	14.81
Total	103969	100.00	1132169	100.00



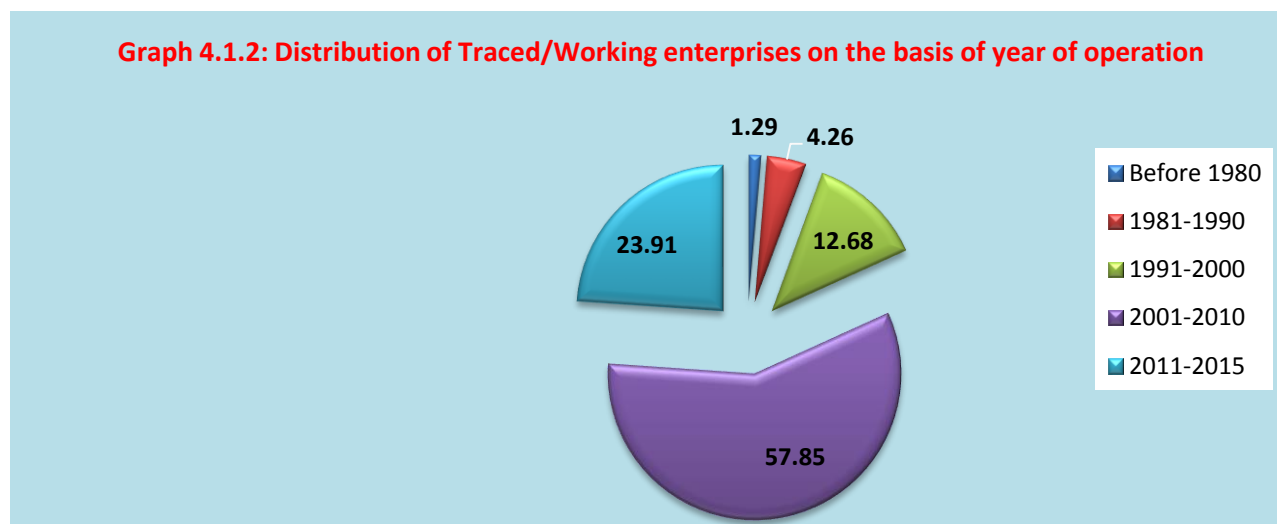
Statement 4.1.1 represents the distribution of Traced & Working enterprises registered under Companies Act in Delhi and employment therein. Maximum number of Enterprises registered under Companies Act is recorded in South East district with 19099 (18.37%), followed by Central district 18994 (18.27%) and West district 12826 (12.34%). The lowest number of enterprises i.e. 1112 (0.78%) were found in North East district of Delhi.

It can be seen from the Statement that maximum number of Employment 185495 (16.38%) was reported in Central district. South district with 168036 (14.84%) and West district with 167618 (14.81%) employment stood at second and third position. The minimum employment i.e. 8783 (0.78%) was found in North East District of Delhi.

Statement 4.1.2: Distribution of Traced & Working enterprises registered under Companies Act on the basis of year of operation

District	Before 1980	1981-1990	1991-2000	2001-2010	2011-2015	Total
CENTRAL	555	1353	3148	11009	2929	18994
EAST	23	161	924	4067	2568	7743
NEW DELHI	141	317	929	2914	1695	5996
NORTH	0	4	18	4007	689	4718
NORTH EAST	1	11	55	617	428	1112
NORTH WEST	55	223	1155	4576	2708	8717
SHAHDARA	59	326	1278	5804	2480	9947
SOUTH	119	596	1740	6508	3296	12259
SOUTH EAST	188	699	1733	12611	3868	19099
SOUTH WEST	11	16	70	1882	579	2558
WEST	192	721	2138	6151	3624	12826
Total	1344	4427	13188	60146	24864	103969
Percentage	1.29	4.26	12.68	57.85	23.91	100.00

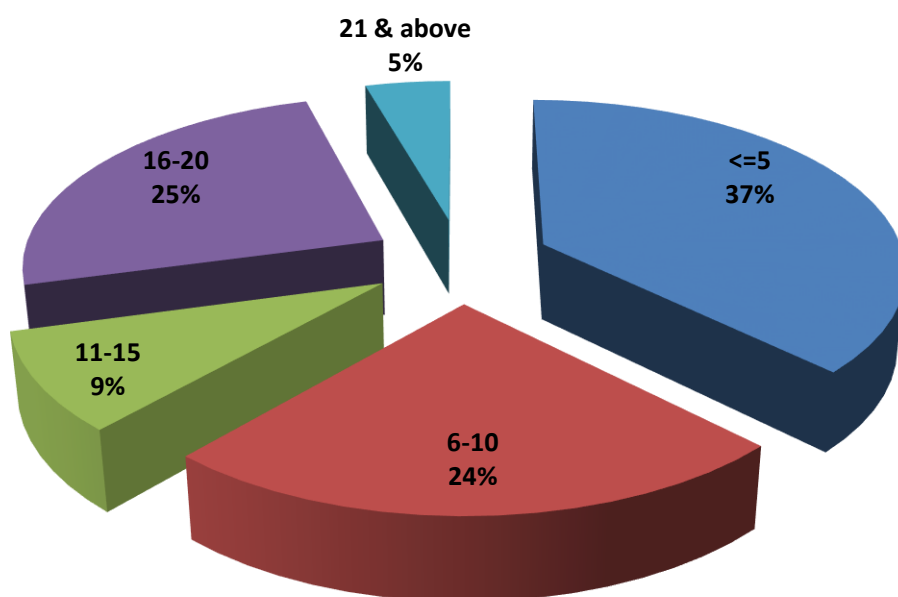
Statement 4.1.2 represents the District-wise distribution of traced & working registered companies in Delhi by the initial year of operation, for the period before 1980-2015. It can be seen from the above Statement that 81.77% of the companies have started their operation after 2001. Maximum percentage of companies (57.85%) were registered during the decade 2001-2010, followed by 23.91% were registered between 2011-2015 (upto 31st March, 2015).



Statement 4.1.3: Distribution of Companies as per Employment Size Class

Employment Size	Number of Enterprises	%
<=5	38890	37.41
6-10	25098	24.14
11-15	9566	9.20
16-20	25822	24.84
21-25	1197	1.15
26-30	862	0.83
31-35	480	0.46
36-40	473	0.45
41-45	199	0.19
46-50	336	0.32
51-100	739	0.71
More than 100	307	0.30
All	103969	100.00

Graph 4.1.3: Distribution of Companies as per employment size class



Statement 4.1.3 shows the distribution of companies as per employment size in Delhi. 37.41% companies reported employment size less than equal to 5 persons, followed by 24.84% companies having employment size 16-20 persons and 24.14% companies reporting employment size of 6-10 persons whereas, about 5% companies reported having employment size of more than 20 persons. Around 1% of establishments were having employment size above 50.

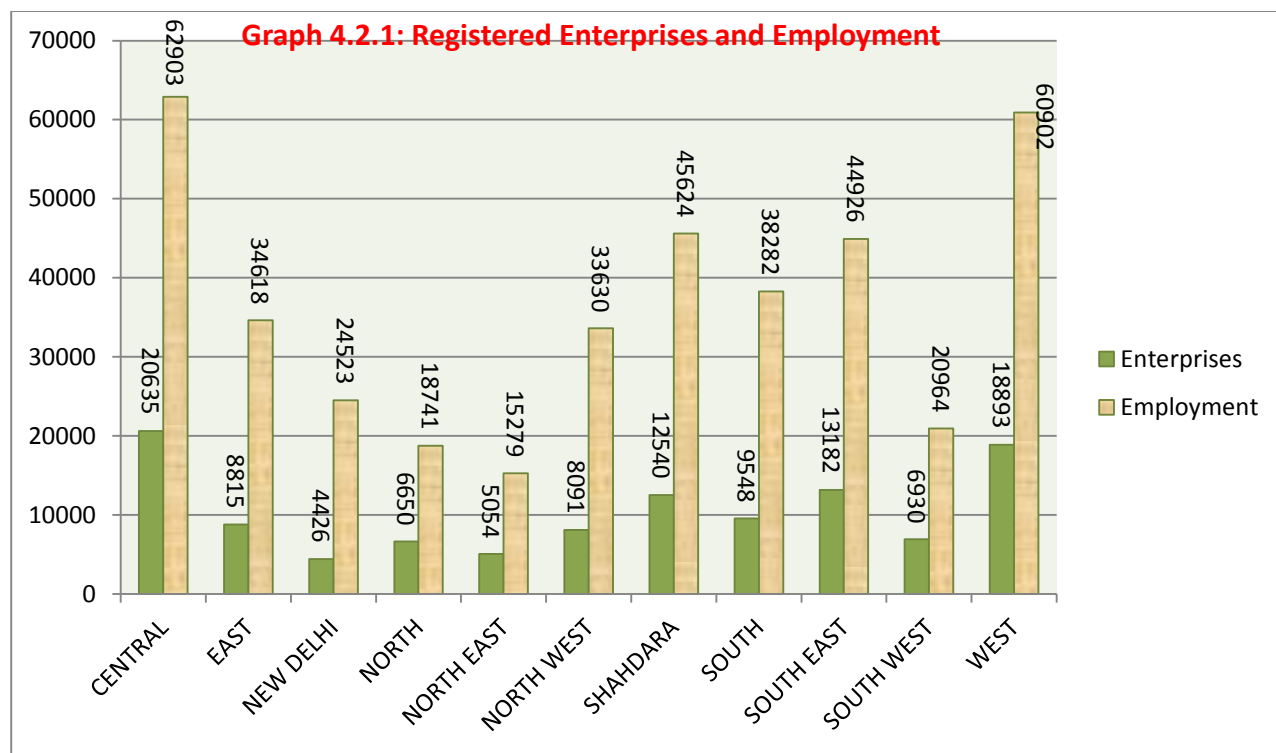
SECTION 4.2

SHOPS AND COMMERCIAL ESTABLISHMENTS ACT

Delhi Shop and Commercial Act, 1954 has been enacted to amend and consolidate the law relating to the regulation of hours of work, payment of wages, leave, holidays, terms of service and other conditions of work of persons employed in shops, commercial establishments, establishments for public entertainment or amusement and other establishments and to provide for certain matters connected therewith. The provisions of the Act will apply to the shops and establishments located in Delhi and not to any establishment working outside Delhi.

Statement 4.2.1: Traced & Working Enterprises registered under Shops and Commercial Establishments Act in Delhi and Persons Employed therein

District	Enterprises	Percentage	Employment	Percentage
Central	20635	17.98	62903	15.71
East	8815	7.68	34618	8.65
New Delhi	4426	3.86	24523	6.12
North	6650	5.79	18741	4.68
North East	5054	4.40	15279	3.82
North West	8091	7.05	33630	8.40
Shahdara	12540	10.93	45624	11.39
South	9548	8.32	38282	9.56
South East	13182	11.49	44926	11.22
South West	6930	6.04	20964	5.24
West	18893	16.46	60902	15.21
Total	114764	100.00	400392	100.00



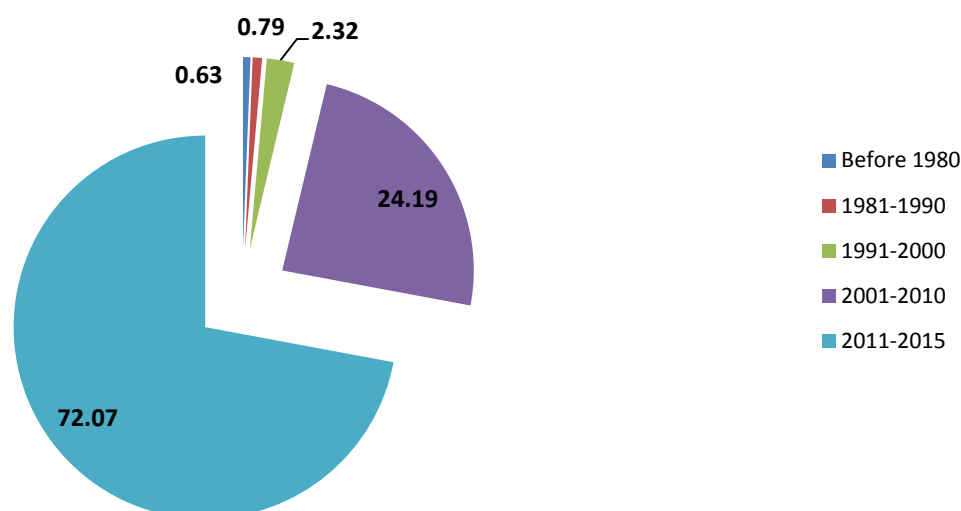
Statement 4.2.1 shows that the Central District has the maximum number of traced & working enterprises 20635 (17.98%) registered under Shops and Commercial Establishments Act, followed by West district 18893(16.46%). The minimum number of enterprises 4426 (3.86%) were found in New Delhi district.

Central District has the maximum employment 62903 (15.71%) followed by West district where 60902 (15.21%) persons were employed and Shahdara district with 45624 (11.39%) employees. The Minimum number employment 15279 (3.82%) was reported in North East District.

Statement 4.2.2: Distribution of Traced & Working enterprises on the basis of year of operation

District	Before 1980	1981-1990	1991-2000	2001-2010	2011-2015	Total
Central	516	567	998	7411	11143	20635
East	19	42	273	1667	6814	8815
New Delhi	15	29	119	956	3307	4426
North	1	0	3	3738	2908	6650
North East	2	6	51	1263	3732	5054
North West	16	37	171	1264	6603	8091
Shahdara	48	81	418	3486	8507	12540
South	24	38	121	1229	8136	9548
South East	23	28	155	1730	11246	13182
South West	3	7	69	2857	3994	6930
West	56	74	282	2164	16317	18893
Total	723	909	2660	27765	82707	114764
Percentage	0.63	0.79	2.32	24.19	72.07	100.00

Graph 4.2.2: Distribution of Enterprises on the basis of year of operation

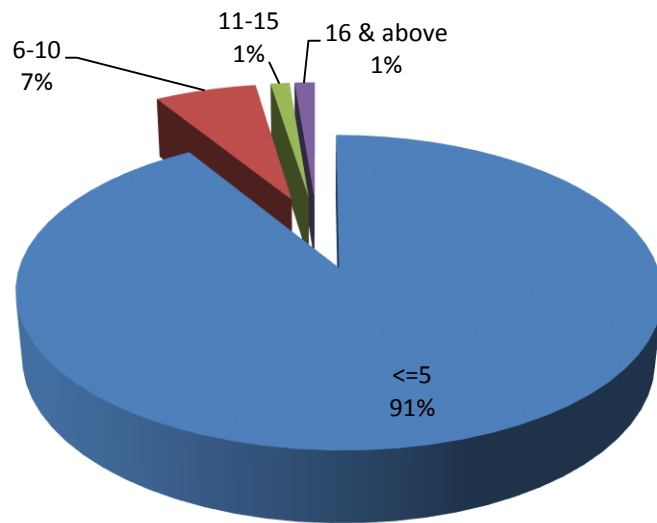


Out of Traced & Working 114764 enterprises about 72% enterprises have started their operation during 2011 to 2015, whereas, only 0.63% enterprises have come into operation before 1980.

Statement 4.2.3: Distribution of Enterprises as per Employment Size

Employment Size	Enterprises	%
<=5	104739	91.26
6-10	7240	6.31
11-15	1346	1.17
16-20	616	0.54
21-25	181	0.16
26-30	150	0.13
31-35	78	0.07
36-40	99	0.09
41-45	60	0.05
46-50	88	0.08
51-100	116	0.10
More than 100	51	0.04
All	114764	100.00

Graph 4.2.3: Distribution of enterprises as per employment size



Statement 4.2.3 shows that maximum enterprises registered under Shops and Establishments Act were having employment size of less than equal to 5 persons.

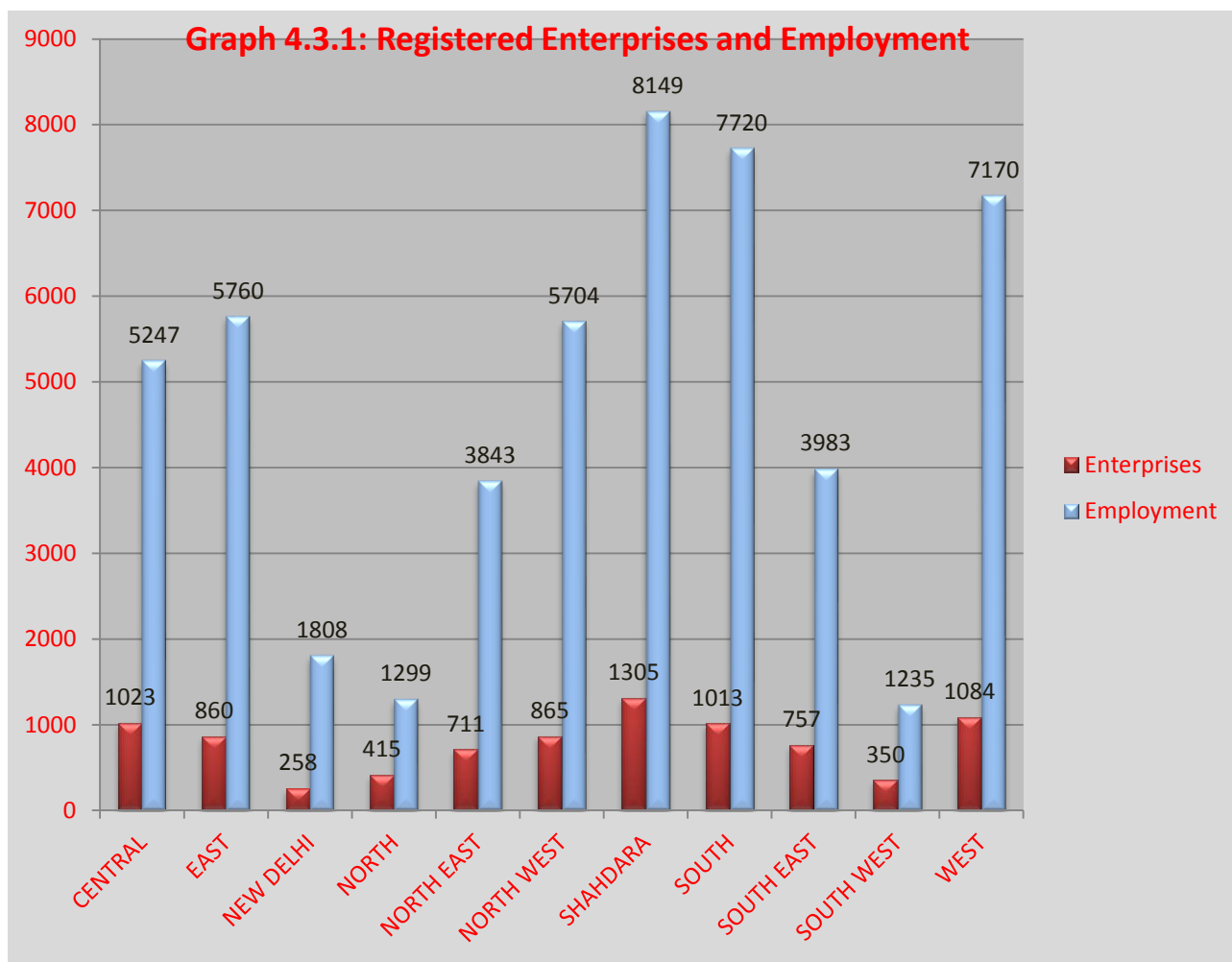
SECTION 4.3

SOCIETIES REGISTRATION ACT

Any seven or more persons associated for any Literary, Scientific, or Charitable purpose, may, by subscribing their names to a Memorandum of Association and filing the same with the Registrar of Societies form themselves into a Society under the Societies Registration Act, 1860. As per Section 20 of the Societies Registration Act, 1860 the following societies may be registered under the said Act. "Charitable purpose societies, the military orphan funds or societies established at the several presidencies of India, societies established for the promotion of science, literature, or the fine arts for instruction, the diffusion of useful knowledge, the diffusion of political education, the foundation or maintenance of libraries or reading rooms for general use among the members or open to the public, or public museums and galleries of paintings and other works of art, collections of natural history, mechanical and philosophical inventions, instruments, or designs." Previously the registering authority of the enterprises under this act was Commissioner of Industries. However, at present the Office of Divisional Commissioner is the registering authority of Societies Registration Act.

Statement 4.3.1: Traced & Working Enterprises registered under Societies Registration Act in Delhi and Persons Employed therein

District	Enterprises	Percentage	Employment	Percentage
Central	1023	11.84	5247	10.11
East	860	9.95	5760	11.09
New Delhi	258	2.99	1808	3.48
North	415	4.80	1299	2.50
North East	711	8.23	3843	7.40
North West	865	10.01	5704	10.99
Shahdara	1305	15.10	8149	15.70
South	1013	11.72	7720	14.87
South East	757	8.76	3983	7.67
South West	350	4.05	1235	2.38
West	1084	12.54	7170	13.81
Total	8641	100.00	51918	100.00



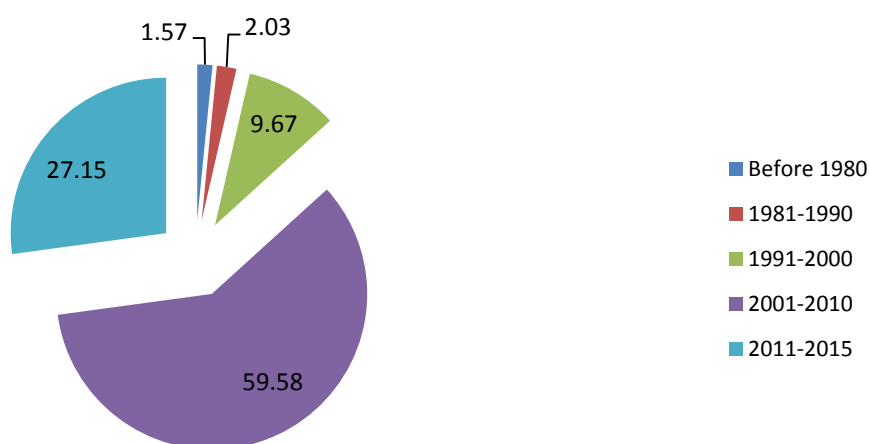
Statement 4.3.1 represents the Registered Societies and Employment therein in Delhi. Shahdara district has the maximum number of Enterprises registered under Societies Registration Act 1305 (15.10%) followed by West district 1084 (12.54%). The minimum number of societies i.e. 258 (2.99%) were found in New Delhi district.

In case of employment the Shahdara district has maximum share with 8149 (15.70%) whereas minimum employment 1299 (2.50 %) was reported in North district.

Statement 4.3.2 : Distribution of Traced & Working enterprises on the basis of year of operation

District	Before 1980	1981-1990	1991-2000	2001-2010	2011-2015	Total
Central	63	61	148	533	218	1023
East	9	10	100	529	212	860
New Delhi	7	12	35	134	70	258
North	0	0	0	383	32	415
North East	1	3	25	472	210	711
North West	13	21	85	395	351	865
Shahdara	9	10	121	854	311	1305
South	11	19	131	594	258	1013
South East	15	22	108	499	113	757
South West	2	2	8	302	36	350
West	6	15	75	453	535	1084
Total	136	175	836	5148	2346	8641
Percentage	1.57	2.03	9.67	59.58	27.15	100.00

Graph 4.3.2: Distribution of Enterprises on the basis of year of operation

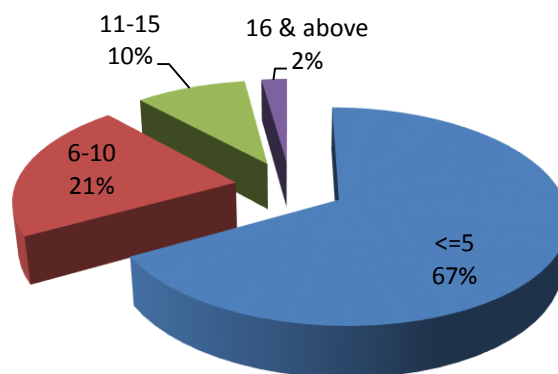


Statement 4.3.2 represents the year wise and District-wise distribution of traced / working enterprises in Delhi, (before 1980-2015). Maximum enterprises were registered during the period 2001-2010. During this period highest proportion i.e. about 60% societies were registered, whereas, 27.15% were registered during the period 2011-2015.

Statement 4.3.3: Distribution of Enterprises as per Employment Size Class

Employment Size	Enterprises	%
<=5	5774	66.82
6-10	1851	21.42
11-15	826	9.56
16-20	69	0.80
21-25	36	0.42
26-30	17	0.20
31-35	9	0.10
36-40	10	0.12
41-45	4	0.05
46-50	9	0.10
51-100	18	0.21
More than 100	18	0.21
All	8641	100.00

Graph 4.3.3: Distribution of enterprises as per employment size



Statement 4.3.3 shows the number of Traced & Working societies and employment size therein. It is evident from the Statement 4.2.that about 67% societies were having employment size of less than equal to 5 workers followed by about 21% societies having employment size of 6-10 workers. Whereas, the lowest proportion i.e. 0.05% enterprises were reported having employment size 41-45 workers.

SECTION 4.4

COOPERATIVE SOCIETIES ACT

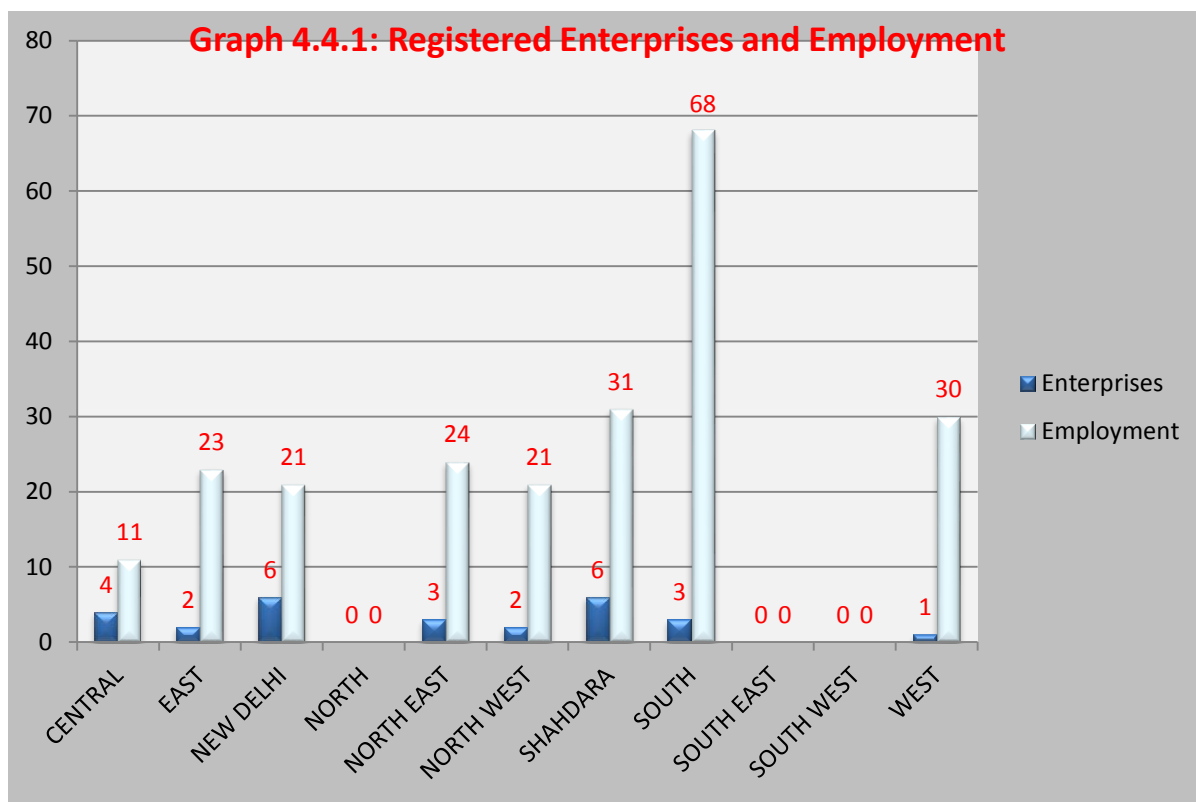
It is a society formed through the co-operation of a number of persons (members of the society) to benefit the members. The funds are raised by members' contributions/investments and the members share the profits. Delhi Co-operative Societies Act 1972 extends to the whole of the Union Territory of Delhi. Co-operative society means society registered or deemed to be registered under this Act.

Statement 4.4.1: Traced & Working Enterprises registered under Co-operative Societies Act in Delhi and Persons Employed therein

District	Enterprises	Percentage	Employment	Percentage
Central	4	14.81	11	4.80
East	2	7.41	23	10.04
New Delhi	6	22.22	21	9.17
North	0	0.00	0	0.00
North East	3	11.11	24	10.48
North West	2	7.41	21	9.17
Shahdara	6	22.22	31	13.54
South	3	11.11	68	29.69
South East	0	0.00	0	0.00
South West	0	0.00	0	0.00
West	1	3.70	30	13.10
Total	27	100.00	229	100.00

Statement 4.4.1 represents the number of Cooperative Societies and employment therein in Delhi. New Delhi and Shahdara district have the maximum number of Enterprises i.e. 22.22% each, followed by Central district 14.81%.

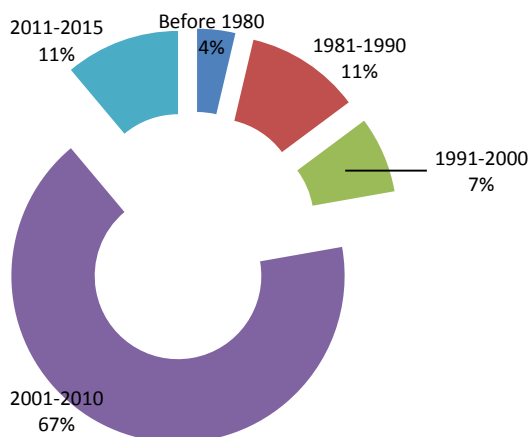
In case of employment the South district has maximum share i.e. 68 (29.69%), followed by Shahdara 31 (13.54%).



Statement 4.4.2: Distribution of Traced & Working enterprises on the basis of year of operation

District	Before 1980	1981-1990	1991-2000	2001-2010	2011-2015	Total
Central	0	2	0	2	0	4
East	0	0	0	1	1	2
New Delhi	0	1	1	4	0	6
North	0	0	0	0	0	0
North East	0	0	0	3	0	3
North West	0	0	0	0	2	2
Shahdara	0	0	1	5	0	6
South	0	0	0	3	0	3
South East	0	0	0	0	0	0
South West	0	0	0	0	0	0
West	1	0	0	0	0	1
Total	1	3	2	18	3	27
Percentage	3.70	11.11	7.41	66.67	11.11	100.00

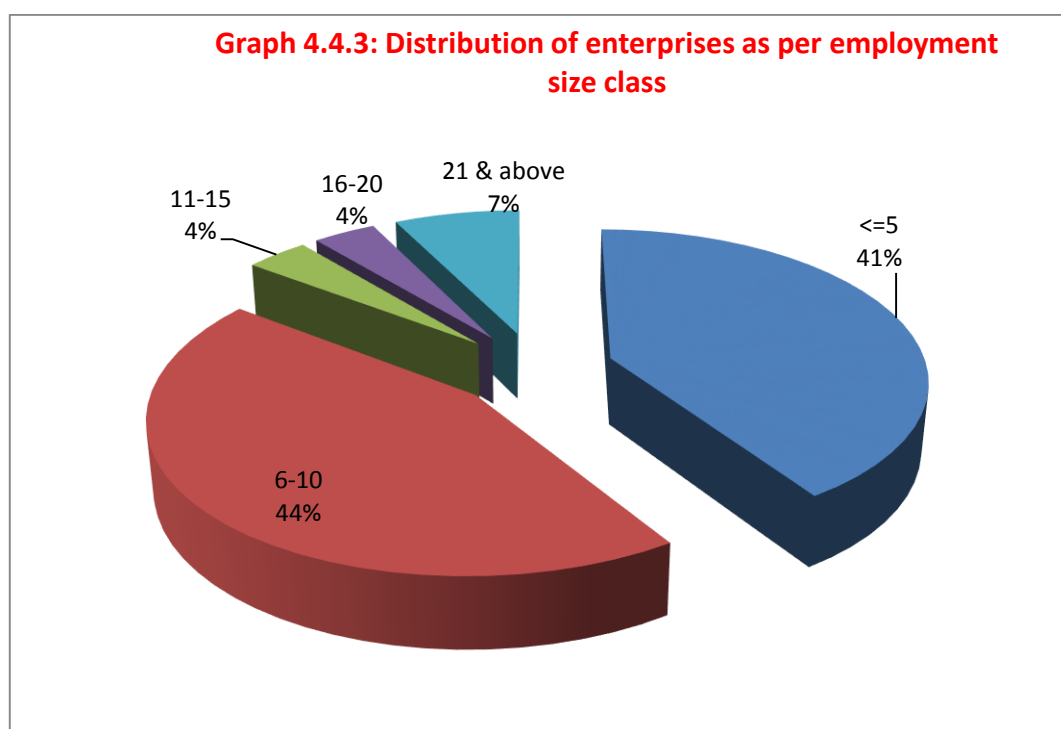
Graph 4.4.2: Distribution of Enterprises on the basis of year of operation



Statement 4.4.2 represents the year wise and District-wise distribution of traced & working enterprises in Delhi, (before 1980-2015) registered under Cooperative Societies Act in Delhi. Maximum enterprises were registered during the period 2001-2010. During this period highest proportion i.e. about 67% cooperative societies were registered, whereas, the lowest proportion i.e about 4% of cooperative societies were registered before 1980.

Statement 4.4.3: Distribution of Enterprises as per Employment Size Class

Employment Size	cooperative	%
<=5	11	40.74
6-10	12	44.44
11-15	1	3.70
16-20	1	3.70
21-25	0	0.00
26-30	1	3.70
31-35	0	0.00
36-40	0	0.00
41-45	0	0.00
46-50	1	3.70
51-100	0	0.00
More than 100	0	0.00
All	27	100.00



Statement 4.4.3 shows the number of Traced & Working cooperative societies and employment size therein. It is evident from the Statement 4.2.that about 44% cooperative societies were having employment size of 6-10 workers, followed by about 41% cooperative societies having employment size of less than equal to 5 persons.

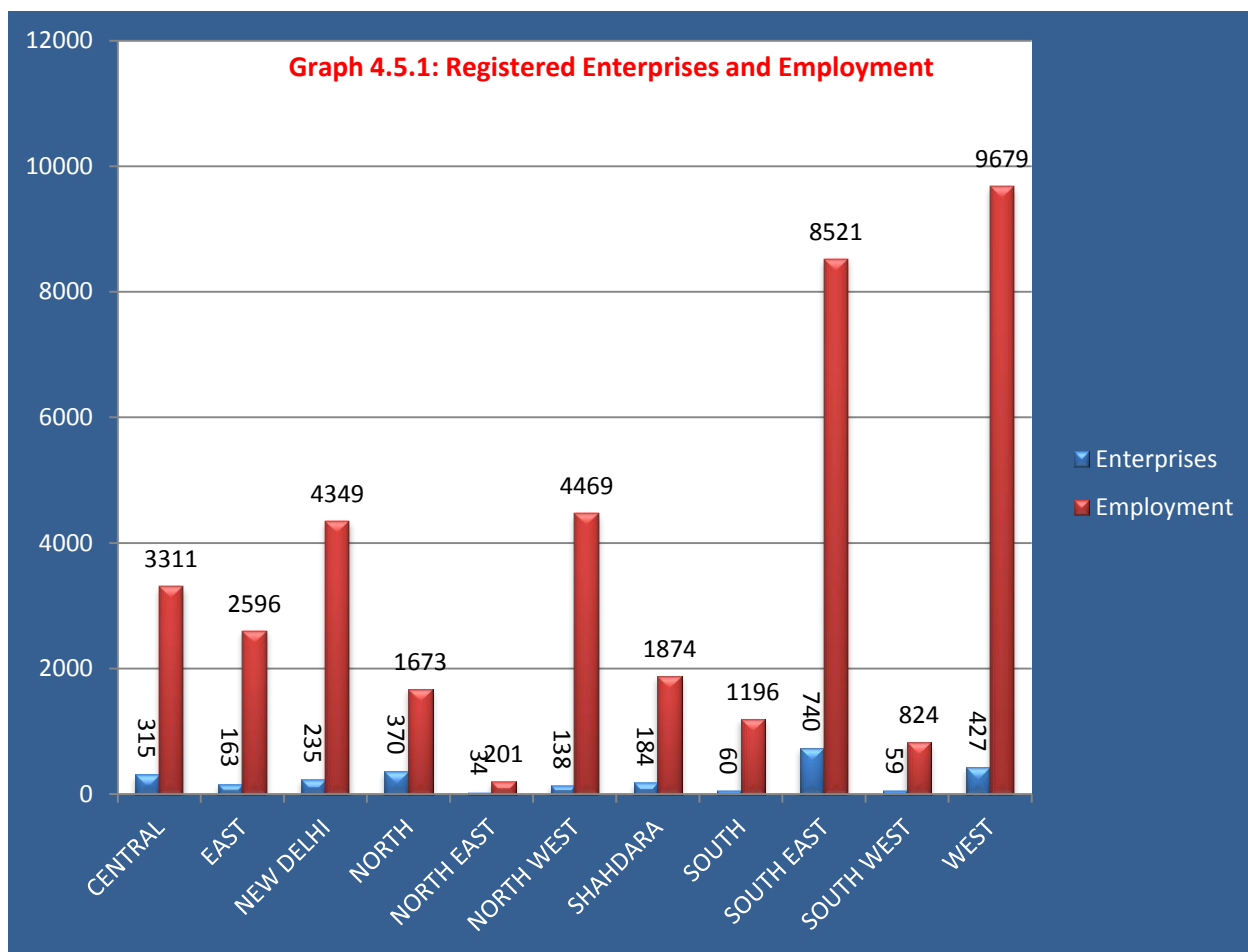
SECTION 4.5

FACTORIES ACT, 1948

The Factories Act, is a social legislation which has been enacted for occupational safety, health and welfare of workers at work places. The industries in which ten (10) or more than ten workers are employed on any day of the preceding twelve months and are engaged in manufacturing process being carried out with the aid of power or twenty or more than twenty workers are employed in manufacturing process being carried out without the aid of power, are covered under the provisions of this Act.

Statement 4.5.1: Traced & Working Enterprises registered under Factories Act, 1948 in Delhi and Number of Persons Employed therein

District	Enterprises	Percentage	Employment	Percentage
Central	315	11.56	3311	8.56
East	163	5.98	2596	6.71
New Delhi	235	8.62	4349	11.24
North	370	13.58	1673	4.32
North East	34	1.25	201	0.52
North West	138	5.06	4469	11.55
Shahdara	184	6.75	1874	4.84
South	60	2.20	1196	3.09
South East	740	27.16	8521	22.02
South West	59	2.17	824	2.13
West	427	15.67	9679	25.01
Total	2725	100.00	38693	100.00

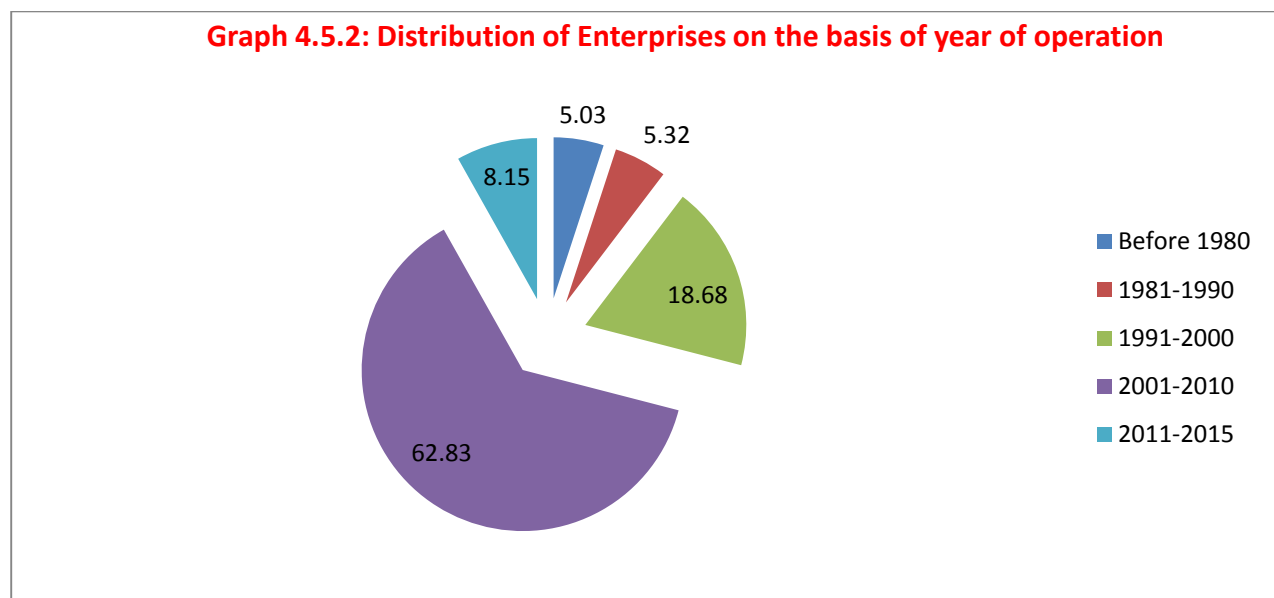


Statement 4.5.1 represents the distribution of Traced & Working enterprises registered under Factories Act in Delhi and employment therein. In South East District maximum number of Enterprises 740 (27.16%) were reported, followed by West district 427 (15.67%) and North district 370 (13.58%). However, the minimum number enterprise i.e. 34 (1.25%) were found in North East district of Delhi.

It can be seen from the Statement 4.2.that maximum Employment 9679 (25.01%) was reported in West district, followed by South East district i.e. 8521 (22.02%) and North West district 4469 (11.55%). The minimum employment i.e. 201 (0.52%) was found in North East District of Delhi.

Statement 4.5.2: Distribution of Traced & Working enterprises on the basis of year of operation

District	Before 1980	1981-1990	1991-2000	2001-2010	2011-2015	Total
Central	26	20	55	195	19	315
East	2	8	31	108	14	163
New Delhi	18	19	35	140	23	235
North	0	0	54	312	4	370
North East	1	0	2	27	4	34
North West	26	15	34	51	12	138
Shahdara	17	21	19	78	49	184
South	2	3	10	33	12	60
South East	7	19	94	558	62	740
South West	2	4	13	34	6	59
West	36	36	162	176	17	427
Total	137	145	509	1712	222	2725
Percentage	5.03	5.32	18.68	62.83	8.15	100.00



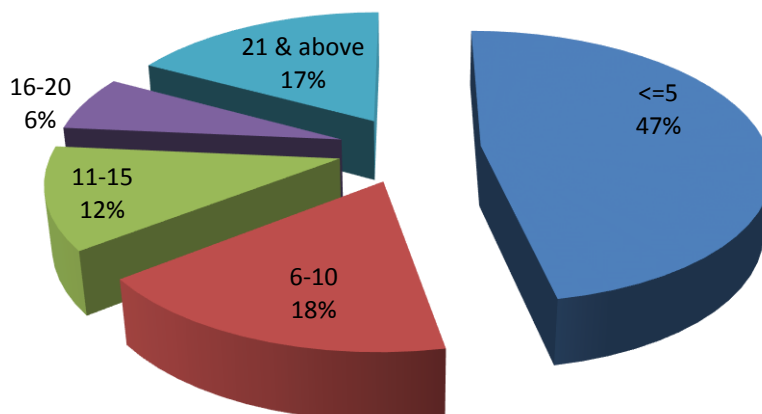
Statement 4.5.2 represents the District-wise and year of operation wise distribution of traced & working registered Factories in Delhi, for the period before 1980-2015. It can be seen from the above Statement

4.2.that 62.83 % of the factories have started their operation between the period 2001 to 2010, followed by 18.68% registered in the decade 1991-2000.

Statement 4.5.3: Distribution of Factories as per Employment Size Class

Employment Size	Enterprise	%
<=5	1279	46.94
6-10	478	17.54
11-15	326	11.96
16-20	177	6.50
21-25	84	3.08
26-30	100	3.67
31-35	54	1.98
36-40	51	1.87
41-45	15	0.55
46-50	45	1.65
51-100	81	2.97
More than 100	35	1.28
All	2725	100.00

Graph 4.5.3: Distribution of enterprises as per employment size



Statement 4.5.3 shows the distribution of factories as per employment size class in Delhi. 46.94% factories reported employment size less than equal to 5 persons, followed by 17.54% factories having employment size 6-10 persons and 11.96% factories reporting employment size of 11-15 persons, whereas, about 17% factories reported having employment size of more than 20 persons.

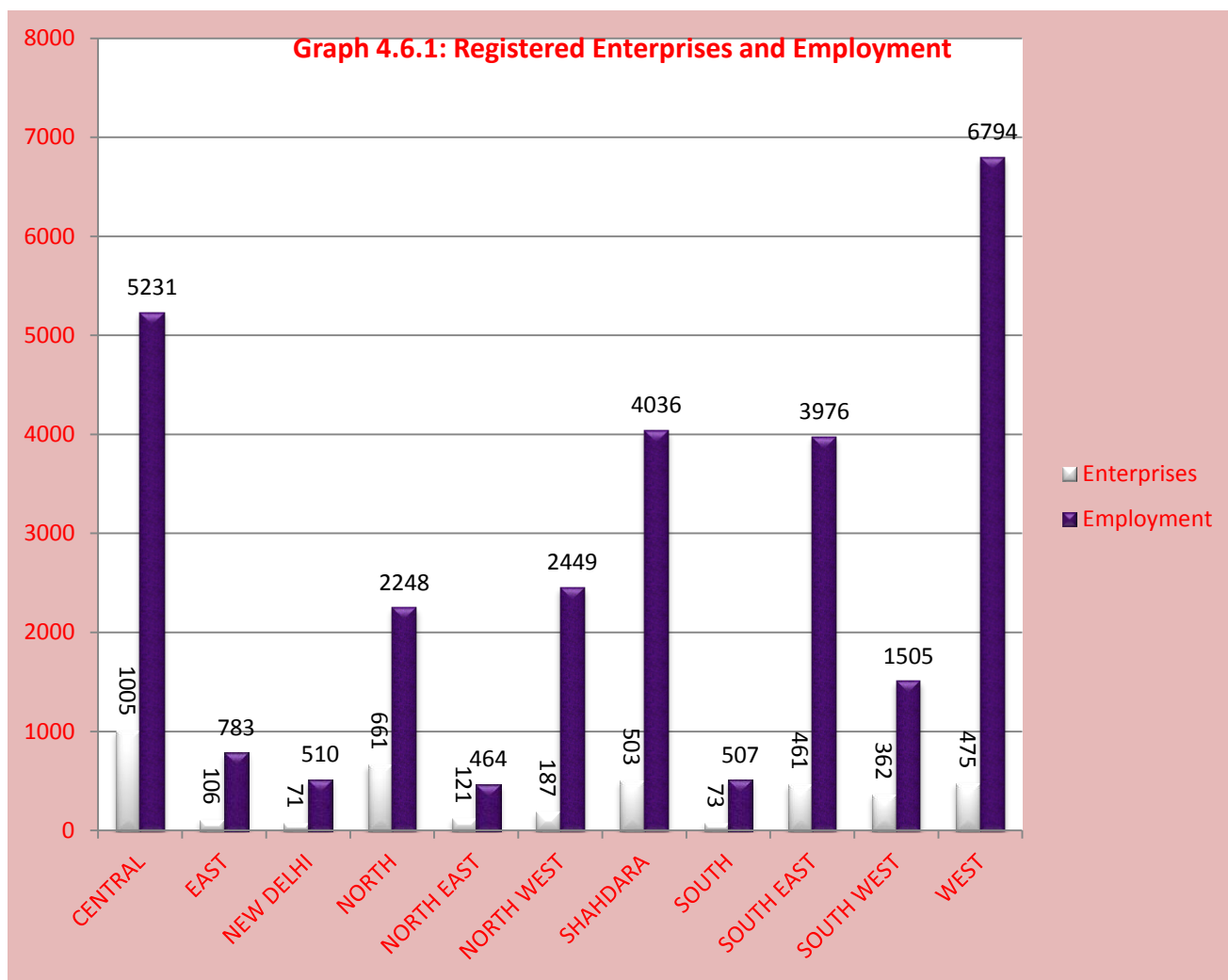
SECTION 4.6

DIRECTORATE OF INDUSTRIES (MSMED ACT,2006)

Classification of Micro, Small and Medium Enterprises Development (MSMED) Act is based on the original value of plant & machinery or equipments. The Micro, Small and Medium Enterprises Development (MSMED) Act was notified in 2006 to address policy issues affecting MSMEs as well as the coverage and investment ceiling of the sector. The Act seeks to facilitate the development of these enterprises and enhance their competitiveness.

Statement 4.6.1: Traced & Working Enterprises registered under MSMED Act, 2006 in Delhi and Persons Employed therein

District	Enterprises	Percentage	Employment	Percentage
Central	1005	24.97	5231	18.35
East	106	2.63	783	2.75
New Delhi	71	1.76	510	1.79
North	661	16.42	2248	7.89
North East	121	3.01	464	1.63
North West	187	4.65	2449	8.59
Shahdara	503	12.50	4036	14.16
South	73	1.81	507	1.78
South East	461	11.45	3976	13.95
South West	362	8.99	1505	5.28
West	475	11.80	6794	23.84
Total	4025	100.00	28503	100.00

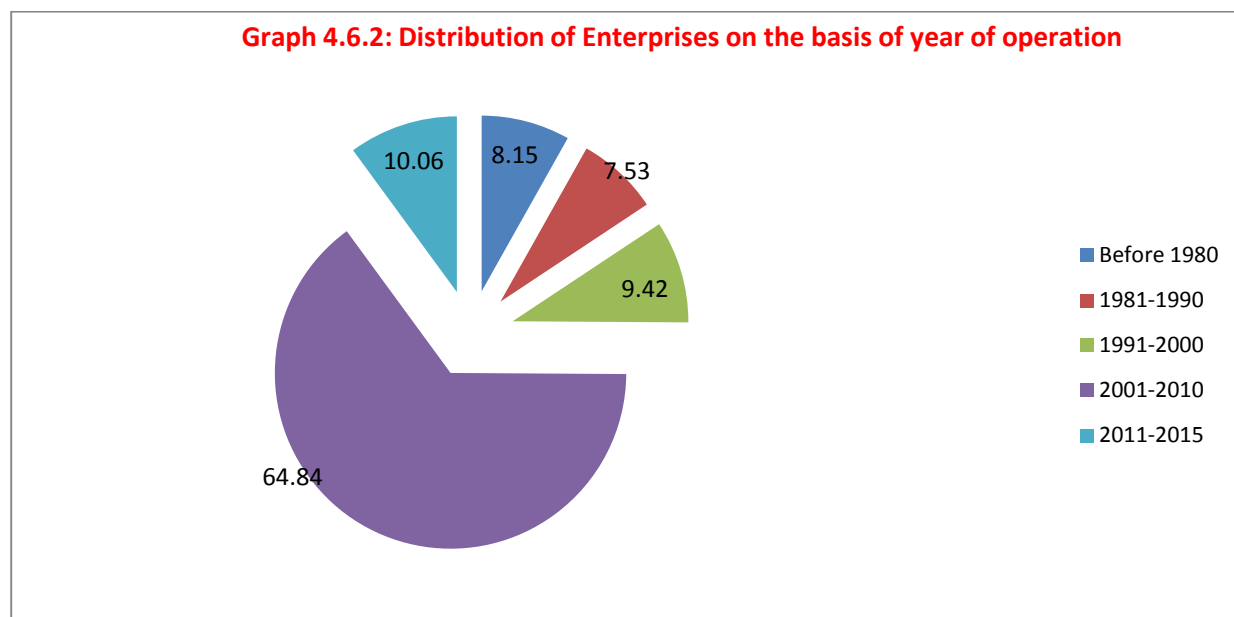


Statement 4.6.1 shows that the Central District has the maximum number of Enterprises 1005 (24.97%) registered under MSMED Act, followed by North district 661 (16.42%) and Shahdara district 503 (12.50%). On the other hand, the minimum number of enterprises i.e. 71 (1.76%) were found in New Delhi district.

West District has the maximum employment of 6794 (23.84%), followed by Central district where 5231 (18.35%) persons were employed and Shahdara district with 4036 (14.16%) employees. The Minimum number employment 507 (1.78%) was reported in South District.

Statement 4.6.2: Distribution of Traced & Working enterprises on the basis of year of operation under MSMED Act, 2006 in Delhi

District	Before 1980	1981-1990	1991-2000	2001-2010	2011-2015	Total
Central	149	87	129	562	78	1005
East	1	4	5	54	42	106
New Delhi	14	10	7	34	6	71
North	0	0	7	634	20	661
North East	2	2	0	108	9	121
North West	39	24	27	81	16	187
Shahdara	26	38	57	313	69	503
South	3	10	3	40	17	73
South East	8	14	29	295	115	461
South West	9	8	18	321	6	362
West	77	106	97	168	27	475
Total	328	303	379	2610	405	4025
Percentage	8.15	7.53	9.42	64.84	10.06	100.00

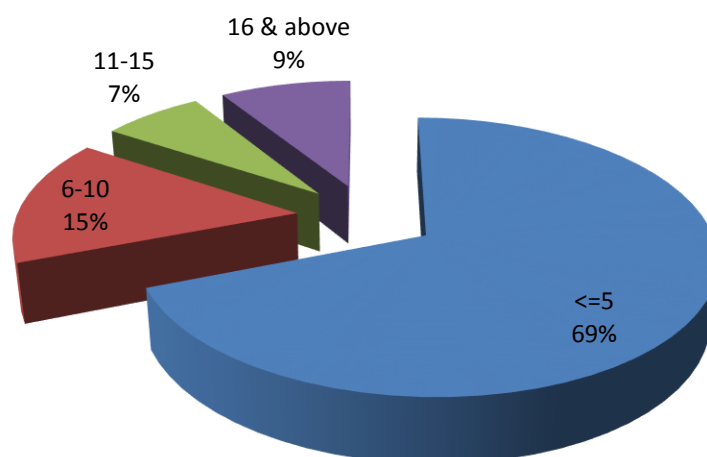


Statement 4.6.2 represents the distribution of Traced & Working enterprises based on initial year of operation. The maximum number of enterprises i.e. 2610 (64.84%) registered under MSMED Act was reported in the period between the year 2001-2010, whereas, only 303 (7.53%) enterprises came into operation during the period 1981-1990.

Statement 4.6.3: Distribution of Enterprises as per Employment Size

Employment Size	MSME	%
<=5	2780	69.07
6-10	612	15.20
11-15	275	6.83
16-20	138	3.43
21-25	67	1.66
26-30	49	1.22
31-35	17	0.42
36-40	21	0.52
41-45	12	0.30
46-50	13	0.32
51-100	36	0.89
More than 100	5	0.12
All	4025	100.00

Graph 4.6.3: Distribution of enterprises as per employment size



Statement 4.6.3 shows that 69.07% enterprises were having an employment size of less than equal to 5 persons, followed by 15.20% enterprises in the employment size of 6-10 persons. 41 enterprises (1%) were having their employment size of more than 50.

SECTION 4.7

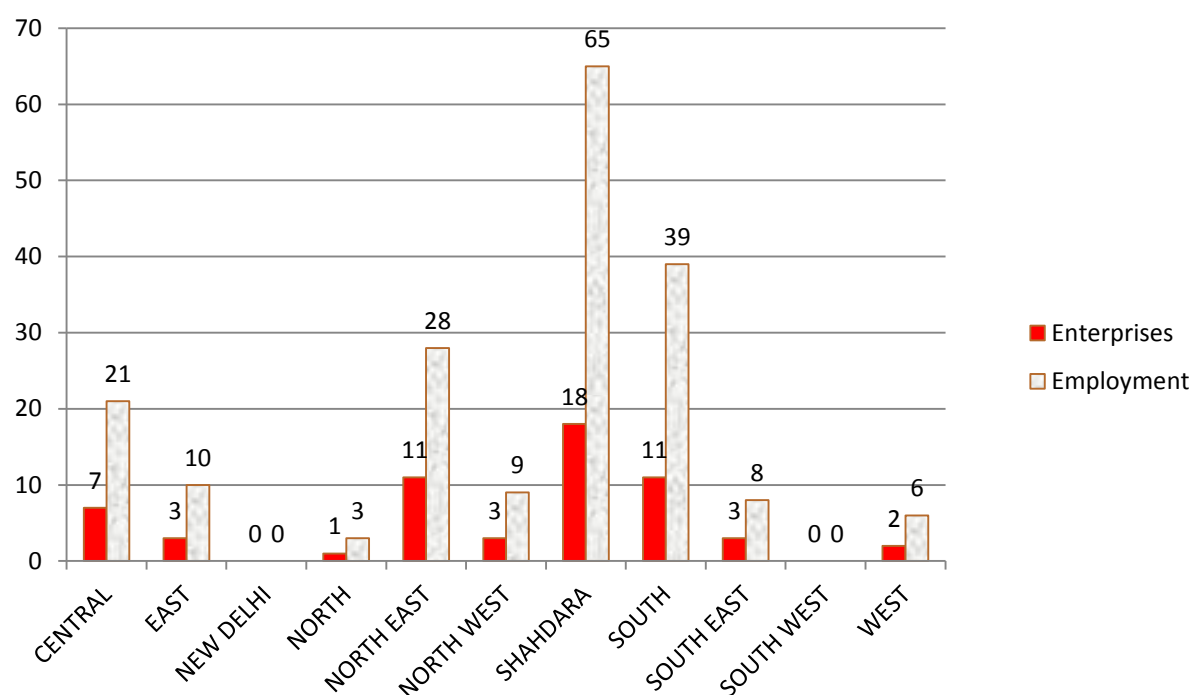
KHADI AND VILLAGE INDUSTRIES BOARD

The main aim of the Board is to promote and popularize Khadi & Village products and create awareness among the masses and also to generate employment in the National Capital Territory of Delhi NCT of Delhi especially in the rural as well as in urban areas of Delhi.

Statement 4.7.1: Traced & Working Enterprises registered under Khadi & Village Industries Board in Delhi and Persons Employed therein

District	Enterprises	Percentage	Employment	Percentage
Central	7	11.86	21	11.11
East	3	5.08	10	5.29
New Delhi	0	0.00	0	0.00
North	1	1.69	3	1.59
North East	11	18.64	28	14.81
North West	3	5.08	9	4.76
Shahdara	18	30.51	65	34.39
South	11	18.64	39	20.63
South East	3	5.08	8	4.23
South West	0	0.00	0	0.00
West	2	3.39	6	3.17
Total	59	100.00	189	100.00

Graph 4.7.1: Registered Enterprises and Employment

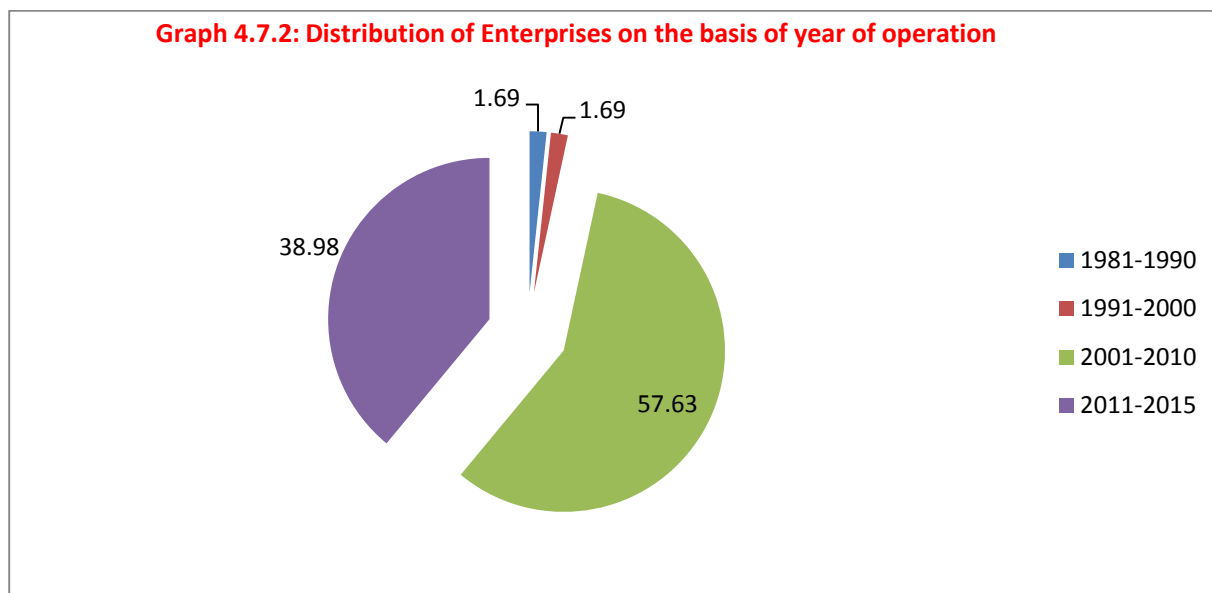


District wise traced enterprises of NCT Delhi registered in Khadi and Village Industries Board and employment therein is shown in the Statement 4.7.1. It is observed that Shahdara district was having the maximum number of enterprises 18 (30.51%), followed by North East and South district each having 11 (18.64%) enterprises.

Shahdara District has the maximum employment 65 (34.39%), followed by South district where 39 (20.63%) persons were employed.

Statement 4.7.2: Distribution of Traced & Working enterprises on the basis of year of operation

District	Before 1980	1981-1990	1991-2000	2001-2010	2011-2015	Total
Central	0	0	1	4	2	7
East	0	0	0	2	1	3
New Delhi	0	0	0	0	0	0
North	0	0	0	1	0	1
North East	0	0	0	6	5	11
North West	0	1	0	1	1	3
Shahdara	0	0	0	11	7	18
South	0	0	0	5	6	11
South East	0	0	0	3	0	3
South West	0	0	0	0	0	0
West	0	0	0	1	1	2
Total	0	1	1	34	23	59
Percentage	0	1.69	1.69	57.63	38.98	100.00

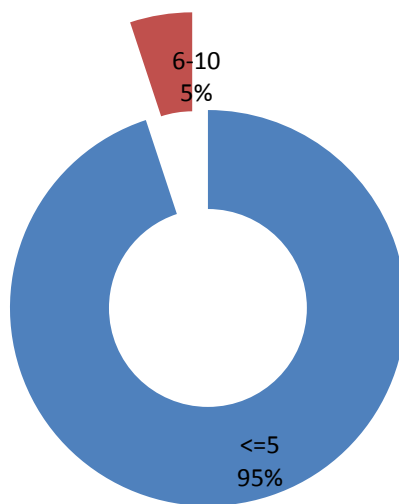


Statement 4.7.2 represents the distribution of traced or working enterprises based on year operation. Out of Traced & Working 59 enterprises about 58% enterprises started their operation during 2001 to 2010, followed by 39% enterprises who started their operation during the period 2011-2015 (upto 31st March, 2015).

Statement 4.7.3: Distribution of Enterprises as per Employment Size

Employment Size	Enterprises	%
<=5	56	94.92
6-10	3	5.08
11-15	0	0.00
16-20	0	0.00
21-25	0	0.00
26-30	0	0.00
31-35	0	0.00
36-40	0	0.00
41-45	0	0.00
46-50	0	0.00
51-100	0	0.00
More than 100	0	0.00
All	59	100.00

Graph 4.7.3: Distribution of enterprises as per employment size



Statement 4.7.3 shows that maximum enterprises i.e. about 95% enterprises registered under Khadi and Village Industries Board were having employment size of less than equal to 5 persons and remaining 5% (approx) enterprises were under the employment size of 6-10 persons.

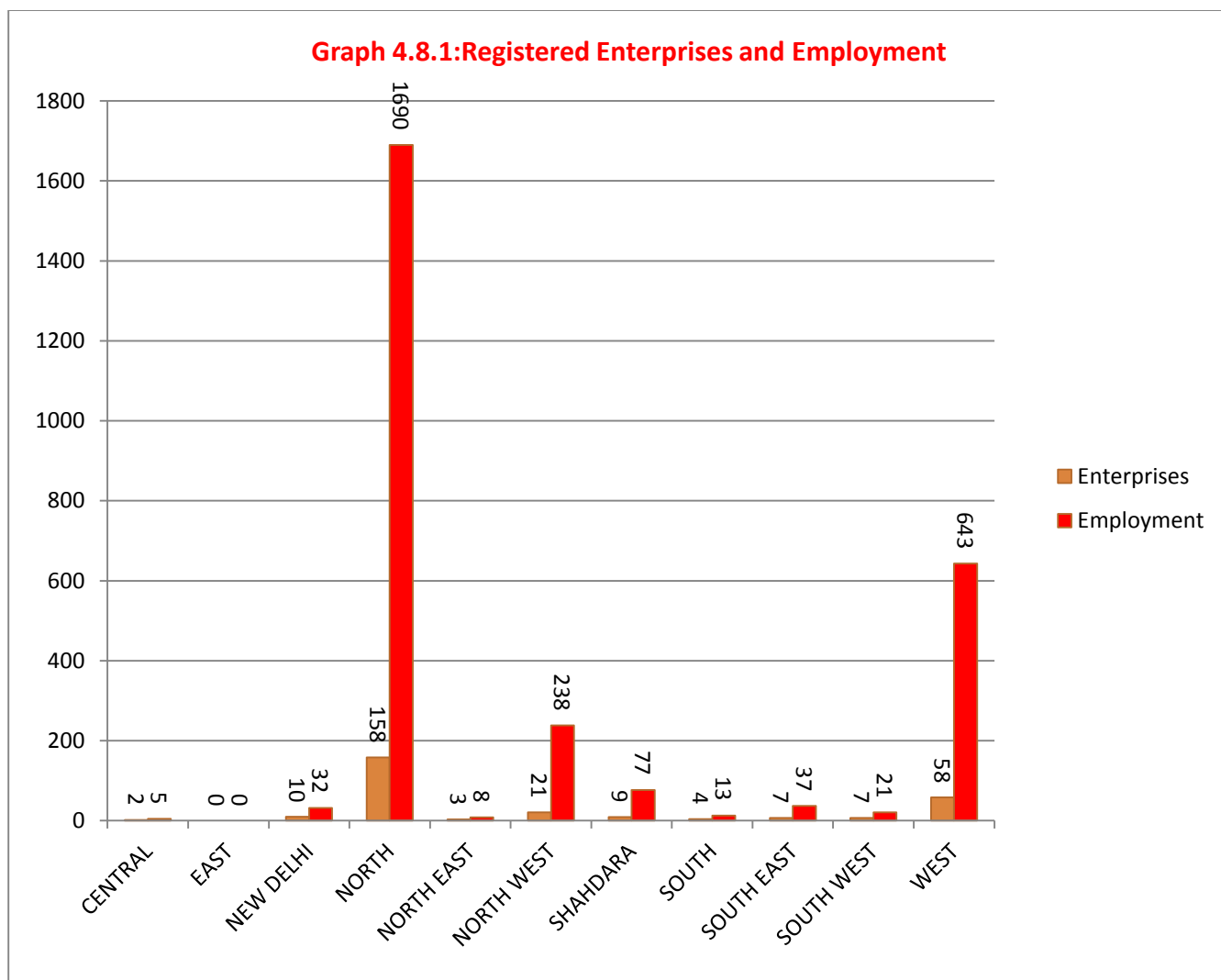
SECTION 4.8

FOOD & SAFETY STANDARDS REGULATIONS, 2011

The endeavour of Food & Safety Standards Regulations, 2011 is to achieve an appropriate level of protection of the health of citizens by ensuring availability of safe and wholesome food for human consumption as per the Food Safety and Standards laid down under the Food Safety and Standards Act and Rules/Regulations made thereunder.

Statement 4.8.1: Traced & Working Enterprises registered under Food & Safety Standards Regulations, 2011 in Delhi and Persons Employed therein

District	Enterprises	Percentage	Employment	Percentage
Central	2	0.72	5	0.18
East	0	0.00	0	0.00
New Delhi	10	3.58	32	1.16
North	158	56.63	1690	61.14
North East	3	1.08	8	0.29
North West	21	7.53	238	8.61
Shahdara	9	3.23	77	2.79
South	4	1.43	13	0.47
South East	7	2.51	37	1.34
South West	7	2.51	21	0.76
West	58	20.79	643	23.26
Total	279	100.00	2764	100.00



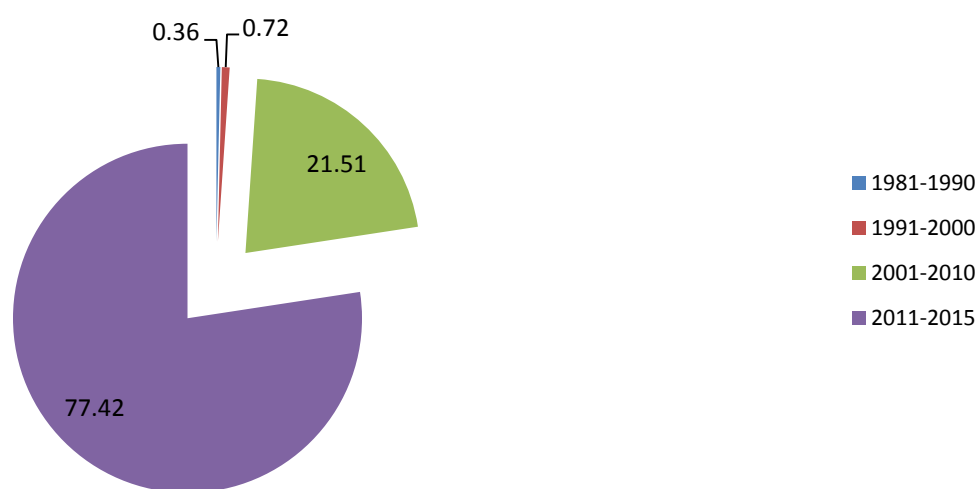
District wise traced enterprises of NCT Delhi registered under Food & safety Standards Regulation, 2011 and total employment size therein is present in the Statement 4.8.1. North district has the maximum number of enterprises i.e. 158 (56.63%), followed by West district i.e. 58 (20.79%) enterprises.

In case of employment North district excels in number of workers with 1690 (61.14%), followed by West district 643 (23.26%).

Statement 4.8.2: Distribution of Traced & Working enterprises on the basis of year of operation

District	Before 1980	1981-1990	1991-2000	2001-2010	2011-2015	Total
Central	0	0	0	2	0	2
East	0	0	0	0	0	0
New Delhi	0	0	0	7	3	10
North	0	0	0	22	136	158
North East	0	0	0	2	1	3
North West	0	0	0	2	19	21
Shahdara	0	0	1	8	0	9
South	0	0	0	3	1	4
South East	0	1	0	5	1	7
South West	0	0	0	7	0	7
West	0	0	1	2	55	58
Total	0	1	2	60	216	279
Percentage	0	0.36	0.72	21.51	77.42	100.00

Graph 4.8.2: Distribution of Enterprises on the basis of year of operation

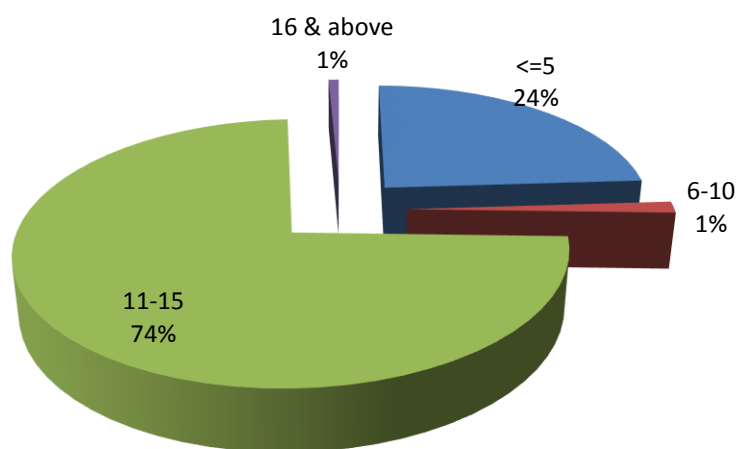


Statement 4.8.2 represents the year wise and District-wise distribution of traced & working enterprises in Delhi, (before 1980-2015) registered under Food & Safety Standards Regulations in Delhi. Maximum enterprises were registered during the period 2011-2015 (upto 31st March, 2015). During this period highest proportion i.e. about 77% enterprises were registered followed by about 22% were registered during the period 2001-2010.

Statement 4.8.3: Distribution of Enterprises as per Employment Size

Employment Size	Enterprises	%
<=5	67	24.01
6-10	4	1.43
11-15	206	73.84
16-20	1	0.36
21-25	0	0.00
26-30	0	0.00
31-35	0	0.00
36-40	0	0.00
41-45	1	0.36
46-50	0	0.00
51-100	0	0.00
More than 100	0	0.00
All	279	100.00

Graph 4.8.3: Distribution of enterprises as per employment size



Statement 4.8.3 shows the number of Traced & Working enterprises registered under Food and Safety Standards Regulations and employment size therein. It is evident from the Statement 4.2.that about 74% enterprises were having employment size of 11-15 workers, followed by about 24% enterprises having employment size of less than equal to 5 persons.

ANNEXURE I

GOVT. OF NCT OF DELHI
DIRECTORATE OF ECONOMICS AND STATISTICS
3rd FLOOR 'B' WING VIKAS BHAWAN-II, CIVIL LINES, DELHI-110054.

SIDE-'A'

Reference No.....
(to be copied form list given to Enumerator)

Business Register Schedule

(for Establishments registered under Acts/ Registering Authorities)																																	
SECTION I : Identification Particulars																																	
i) State.....DELHI.....		Code	<table border="1" style="display: inline-table; border-collapse: collapse;"> <tr><td>0</td><td>7</td><td></td><td></td><td></td><td></td></tr> <tr><td></td><td></td><td></td><td></td><td></td><td></td></tr> <tr><td></td><td></td><td></td><td></td><td></td><td></td></tr> <tr><td></td><td></td><td></td><td></td><td></td><td></td></tr> <tr><td></td><td></td><td></td><td></td><td></td><td></td></tr> </table>	0	7																												
0	7																																
ii) District.....		Code																															
iii) Sub. District/Tehsil.....		Code																															
iv) Town/village.....		Code																															
v) Ward Name & No.																																	
SECTION II: Information on Business Establishments																																	
1	Name and address of Establishment/Owner (if no establishment name) along with PAN & TAN	2	Name and address of Main Office, if any, along with PAN & TAN																														
1.1	Regional language	2.1	Regional language																														
	Name		Name																														
	House No. Lane		House No. Lane																														
	Locality		Locality																														
	PIN Code		PIN Code																														
1.2	English	2.2	English																														
	Name		Name																														
	House No. Lane		House No. Lane																														
	Locality		Locality																														
	PIN Code		PIN Code																														
1.3	Tel No./Mobile No.	2.3	Tel No./Mobile No.																														
1.4	E-mail	2.4	E-mail																														
1.5	PAN	2.5	PAN																														
1.6	TAN	2.6	TAN																														
3	Description of major activity:-																																
4	NIC-2008 3 digit code	Section III: Particulars of Field Officers																															
5	Year of starting of operation (under current ownership) (YYYY)	Checked and found correct																															
6	Ownership code (Govt./PSU: 1, Private:- Proprietary: 2, Partnership: 3, Company: 4, Self Help Group: 5, Cooperative: 6, Non Profit Institution: 7, Others: 8)	<div style="display: flex; justify-content: space-between;"> <div>Signature of the Enumerator</div> <div>Signature of the Supervisor</div> </div>																															
7	Total number of persons worked on the last working day in relation to day of visit	<div style="display: flex; justify-content: space-between;"> <div>Name of the Enumerator</div> <div>Name of the Supervisor</div> </div>																															
8	Enter the registration number; whichever is applicable:	<div style="display: flex; justify-content: space-between;"> <div>Date</div> <div>Date</div> </div>																															
8.1	Companies Act, 2013	Enumr. No.	Supr. No.																														
8.2	Factories Act, 1948	Section IV: Remarks																															
8.3	Shops and Commercial Establishments Act																																
8.4	Societies Registration Act																																
8.5	Cooperative Societies Act																																
8.6	Khadi and Village Industries Board																																
8.7	Directorate of Industries (District Industries centre)																																
	Any other (specify)																																
8.8																																	
8.9																																	
9	Whether using power or not (Yes -1, No-2)																																

ANNEXURE II

NIC 2008 Group: 3-digit NIC code along with the description	
NIC-2008 (3-Digit)- Group	Description
011	Growing of non-perennial crops
012	Growing of perennial crops
013	Plant propagation
014	Animal production
015	Mixed farming
016	Support activities to agriculture and post-harvest crop activities
017	Hunting, trapping and related service activities
021	Silviculture and other forestry activities
022	Logging
023	Gathering of non-wood forest products
024	Support services to forestry
031	Fishing
032	Aquaculture
051	Mining of hard coal
052	Mining of lignite
061	Extraction of crude petroleum
062	Extraction of natural gas
071	Mining of iron ores
072	Mining of non-ferrous metal ores
081	Quarrying of stone, sand and clay
089	Mining and quarrying n.e.c.
091	Support activities for petroleum and natural gas extraction
099	Support activities for other mining and quarrying
101	Processing and preserving of meat
102	Processing and preserving of fish, crustaceans and molluscs
103	Processing and preserving of fruit and vegetables
104	Manufacture of vegetable and animal oils and fats
105	Manufacture of dairy products
106	Manufacture of grain mill products, starches and starch products
107	Manufacture of other food products
108	Manufacture of prepared animal feeds
110	Manufacture of beverages
120	Manufacture of tobacco products
131	Spinning, weaving and finishing of textiles
139	Manufacture of other textiles
141	Manufacture of wearing apparel, except fur apparel
142	Manufacture of articles of fur
143	Manufacture of knitted and crocheted apparel
151	Tanning and dressing of leather; manufacture of luggage, handbags, saddlery and harness; dressing and dyeing of fur
152	Manufacture of footwear
161	Sawmilling and planing of wood
162	Manufacture of products of wood, cork, straw and plaiting materials
170	Manufacture of paper and paper products
181	Printing and service activities related to printing
182	Reproduction of recorded media
191	Manufacture of coke oven products
192	Manufacture of refined petroleum products
201	Manufacture of basic chemicals, fertilizers and nitrogen compounds, plastics and synthetic rubber in primary forms
202	Manufacture of other chemical products
203	Manufacture of man-made fibres
210	Manufacture of pharmaceuticals, medicinal chemical and botanical products
221	Manufacture of rubber products

NIC 2008 Group: 3-digit NIC code along with the description	
NIC-2008 (3-Digit)- Group	Description
222	Manufacture of plastics products
231	Manufacture of glass and glass products
239	Manufacture of non-metallic mineral products n.e.c.
241	Manufacture of basic iron and steel
242	Manufacture of basic precious and other non-ferrous metals
243	Casting of metals
251	Manufacture of structural metal products, tanks, reservoirs and steam generators
252	Manufacture of weapons and ammunition
259	Manufacture of other fabricated metal products; metalworking service activities
261	Manufacture of electronic components and boards
262	Manufacture of computers and peripheral equipment
263	Manufacture of communication equipment
264	Manufacture of consumer electronics
265	Manufacture of measuring, testing, navigating and control equipment; watches and clocks
266	Manufacture of irradiation, electromedical and electrotherapeutic equipment
267	Manufacture of optical instruments and photographic equipment
268	Manufacture of magnetic and optical media
271	Manufacture of electric motors, generators, transformers and electricity distribution and control apparatus
272	Manufacture of batteries and accumulators
273	Manufacture of wiring and wiring devices
274	Manufacture of electric lighting equipment
275	Manufacture of domestic appliances
279	Manufacture of other electrical equipment
281	Manufacture of general-purpose machinery
282	Manufacture of special-purpose machinery
291	Manufacture of motor vehicles
292	Manufacture of bodies (coachwork) for motor vehicles; manufacture of trailers and semi-trailers
293	Manufacture of parts and accessories for motor vehicles
301	Building of ships and boats
302	Manufacture of railway locomotives and rolling stock
303	Manufacture of air and spacecraft and related machinery
304	Manufacture of military fighting vehicles
309	Manufacture of transport equipment n.e.c.
310	Manufacture of furniture
321	Manufacture of jewellery, bijouterie and related articles
322	Manufacture of musical instruments
323	Manufacture of sports goods
324	Manufacture of games and toys
325	Manufacture of medical and dental instruments and supplies
329	Other manufacturing n.e.c.
331	Repair of fabricated metal products, machinery and equipment
332	Installation of industrial machinery and equipment
351	Electric power generation, transmission and distribution
352	Manufacture of gas; distribution of gaseous fuels through mains
353	Steam and air conditioning supply
360	Water collection, treatment and supply
370	Sewerage
381	Waste collection
382	Waste treatment and disposal
383	Materials recovery
390	Remediation activities and other waste management services
410	Construction of buildings

NIC 2008 Group: 3-digit NIC code along with the description	
NIC-2008 (3-Digit)- Group	Description
421	Construction of roads and railways
422	Construction of utility projects
429	Construction of other civil engineering projects
431	Demolition and site preparation
432	Electrical, plumbing and other construction installation activities
433	Building completion and finishing
439	Other specialized construction activities
451	Sale of motor vehicles
452	Maintenance and repair of motor vehicles
453	Sale of motor vehicle parts and accessories
454	Sale, maintenance and repair of motorcycles and related parts and accessories
461	Wholesale on a fee or contract basis
462	Wholesale of agricultural raw materials and live animals
463	Wholesale of food, beverages and tobacco
464	Wholesale of household goods
465	Wholesale of machinery, equipment and supplies
466	Other specialized wholesale
469	Non-specialized wholesale trade
471	Retail sale in non-specialized stores
472	Retail sale of food, beverages and tobacco in specialized stores
473	Retail sale of automotive fuel in specialized stores
474	Retail sale of information and communications equipment in specialized stores
475	Retail sale of other household equipment in specialized stores
476	Retail sale of cultural and recreation goods in specialized stores
477	Retail sale of other goods in specialized stores
478	Retail sale via stalls and markets
479	Retail trade not in stores, stalls or markets
491	Transport via railways
492	Other land transport
493	Transport via pipeline
501	Sea and coastal water transport
502	Inland water transport
511	Passenger air transport
512	Freight air transport
521	Warehousing and storage
522	Support activities for transportation
531	Postal activities
532	Courier activities
551	Short term accommodation activities
552	Camping grounds, recreational vehicle parks and trailer parks
559	Other accommodation
561	Restaurants and mobile food service activities
562	Event catering and other food service activities
563	Beverage serving activities
581	Publishing of books, periodicals and other publishing activities
582	Software publishing
591	Motion picture, video and television programme activities
592	Sound recording and music publishing activities
601	Radio broadcasting
602	Television programming and broadcasting activities
611	Wired telecommunications activities
612	Wireless telecommunications activities
613	Satellite telecommunications activities
619	Other telecommunications activities
620	Computer programming, consultancy and related activities

NIC 2008 Group: 3-digit NIC code along with the description	
NIC-2008 (3-Digit)- Group	Description
631	Data processing, hosting and related activities; web portals
639	Other information service activities
641	Monetary intermediation
642	Activities of holding companies
643	Trusts, funds and similar financial entities
649	Other financial service activities, except insurance and pension funding activities
651	Insurance
652	Reinsurance
653	Pension funding
661	Activities auxiliary to financial service activities, except insurance and pension funding
662	Activities auxiliary to insurance and pension funding
663	Fund management activities
681	Real estate activities with own or leased property
682	Real estate activities on a fee or contract basis
691	Legal activities
692	Accounting, bookkeeping and auditing activities; tax consultancy
701	Activities of head offices
702	Management consultancy activities
711	Architectural and engineering activities and related technical consultancy
712	Technical testing and analysis
721	Research and experimental development on natural sciences and engineering
722	Research and experimental development on social sciences and humanities
731	Advertising
732	Market research and public opinion polling
741	Specialized design activities
742	Photographic activities
749	Other professional, scientific and technical activities n.e.c.
750	Veterinary activities
771	Renting and leasing of motor vehicles
772	Renting and leasing of personal and household goods
773	Renting and leasing of other machinery, equipment and tangible goods
774	Leasing of intellectual property and similar products, except copyrighted works
781	Activities of employment placement agencies
782	Temporary employment agency activities
783	Other human resources provision
791	Travel agency and tour operator activities
799	Other reservation service and related activities
801	Private security activities
802	Security systems service activities
803	Investigation activities
811	Combined facilities support activities
812	Cleaning activities
813	Landscape care and maintenance service activities
821	Office administrative and support activities
822	Activities of call centres
823	Organization of conventions and trade shows
829	Business support service activities n.e.c.
841	Administration of the State and the economic and social policy of the community
842	Provision of services to the community as a whole
843	Compulsory social security activities
851	Pre-primary and primary education
852	Secondary education
853	Higher education
854	Other education

NIC 2008 Group: 3-digit NIC code along with the description	
NIC-2008 (3-Digit)- Group	Description
855	Educational support activities
861	Hospital activities
862	Medical and dental practice activities
869	Other human health activities
871	Residential nursing care facilities
872	Residential care activities for mental retardation, mental health and substance abuse
873	Residential care activities for the elderly and disabled
879	Other residential care activities
881	Social work activities without accommodation for the elderly and disabled
889	Other social work activities without accommodation
900	Creative, arts and entertainment activities
910	Libraries, archives, museums and other cultural activities
920	Gambling and betting activities
931	Sports activities
932	Other amusement and recreation activities
941	Activities of business, employers and professional membership organizations
942	Activities of trade unions
949	Activities of other membership organizations
951	Repair of computers and communication equipment
952	Repair of personal and household goods
960	Other personal service activities
970	Activities of households as employers of domestic personnel
981	Undifferentiated goods-producing activities of private households for own use
982	Undifferentiated service-producing activities of private households for own use
990	Activities of extraterritorial organizations and bodies

APPENDIX

Table 1: Distribution of Traced & Working Enterprises by Districts and Acts/Registering Authority

District	Shop & Establishment	Companies	Factory	MSME	Cooperative Society	Society Registration	Food & Safety Board	Khadi Vikas Board	All	Multiple	Total
Central	20635	18994	315	1005	4	1023	2	7	41985	1502	40483
East	8815	7743	163	106	2	860	0	3	17692	919	16773
New Delhi	4426	5996	235	71	6	258	10	0	11002	900	10102
North	6650	4718	370	661	0	415	158	1	12973	514	12459
North East	5054	1112	34	121	3	711	3	11	7049	158	6891
North West	8091	8717	138	187	2	865	21	3	18024	789	17235
Shahdara	12540	9947	184	503	6	1305	9	18	24512	882	23630
South	9548	12259	60	73	3	1013	4	11	22971	1097	21874
South East	13182	19099	740	461	0	757	7	3	34249	1812	32437
South West	6930	2558	59	362	0	350	7	0	10266	356	9910
West	18893	12826	427	475	1	1084	58	2	33766	1625	32141
Total	114764	103969	2725	4025	27	8641	279	59	234489	10554	223935

Table 2: Distribution of Employment in Traced & Working Enterprises by Districts & Acts/Registering Authority

District	Shop & Establishment	Companies	Factory	MSME	Cooperative Society	Society Registration	Food & Safety Board	Khadi Vikas Board	All	Multiple	Total
Central	62903	185495	3311	5231	11	5247	5	21	262224	7680	254544
East	34618	91613	2596	783	23	5760	0	10	135403	8189	127214
New Delhi	24523	83975	4349	510	21	1808	32	0	115218	11672	103546
North	18741	20759	1673	2248	0	1299	1690	3	46413	3109	43304
North East	15279	8783	201	464	24	3843	8	28	28630	927	27703
North West	33630	110775	4469	2449	21	5704	238	9	157295	10398	146897
Shahdara	45624	115876	1874	4036	31	8149	77	65	175732	7011	168721
South	38282	168036	1196	507	68	7720	13	39	215861	10643	205218
South East	44926	163931	8521	3976	0	3983	37	8	225382	16940	208442
South West	20964	15308	824	1505	0	1235	21	0	39857	2516	37341
West	60902	167618	9679	6794	30	7170	643	6	252842	18758	234084
Total	400392	1132169	38693	28503	229	51918	2764	189	1654857	97843	1557014

Table 3: Distribution of Enterprises by Districts & Acts as per year of Initial Operation**Before 1980**

District	Shop & Establish ment	Compa nies	Factory	MSME	Cooperative Society	Society Registration	Food & Safety Board	Khadi Vikas Board	All	Multiple	Total
Central	516	555	26	149	0	63	0	0	1309	55	1254
East	19	23	2	1	0	9	0	0	54	5	49
New Delhi	15	141	18	14	0	7	0	0	195	27	168
North	1	0	0	0	0	0	0	0	1	0	1
North East	2	1	1	2	0	1	0	0	7	1	6
North West	16	55	26	39	0	13	0	0	149	25	124
Shahdara	48	59	17	26	0	9	0	0	159	13	146
South	24	119	2	3	0	11	0	0	159	2	157
South East	23	188	7	8	0	15	0	0	241	13	228
South West	3	11	2	9	0	2	0	0	27	9	18
West	56	192	36	77	1	6	0	0	368	56	312
All	723	1344	137	328	1	136	0	0	2669	206	2463

1981-1990

District	Shop & Establish ment	Compa nies	Factory	MSME	Cooperative Society	Society Registration	Food & Safety Board	Khadi Vikas Board	All	Multiple	Total
Central	567	1353	20	87	2	61	0	0	2090	66	2024
East	42	161	8	4	0	10	0	0	225	14	211
New Delhi	29	317	19	10	1	12	0	0	388	26	362
North	0	4	0	0	0	0	0	0	4	0	4
North East	6	11	0	2	0	3	0	0	22	0	22
North West	37	223	15	24	0	21	0	1	321	23	298
Shahdara	81	326	21	38	0	10	0	0	476	25	451
South	38	596	3	10	0	19	0	0	666	17	649
South East	28	699	19	14	0	22	1	0	783	39	744
South West	7	16	4	8	0	2	0	0	37	8	29
West	74	721	36	106	0	15	0	0	952	75	877
All	909	4427	145	303	3	175	1	1	5964	293	5671

Table 3: Distribution of Enterprises by Districts & Acts as per year of Initial Operation**1991-2000**

District	Shop & Establishments	Companies	Factory	MSME	Cooperative Society	Society Registration	Food & Safety Board	Khadi Vikas Board	All	Multiple	Total
Central	998	3148	55	129	0	148	0	1	4479	124	4355
East	273	924	31	5	0	100	0	0	1333	95	1238
New Delhi	119	929	35	7	1	35	0	0	1126	66	1060
North	3	18	54	7	0	0	0	0	82	13	69
North East	51	55	2	0	0	25	0	0	133	3	130
North West	171	1155	34	27	0	85	0	0	1472	92	1380
Shahdara	418	1278	19	57	1	121	1	0	1895	75	1820
South	121	1740	10	3	0	131	0	0	2005	56	1949
South East	155	1733	94	29	0	108	0	0	2119	110	2009
South West	69	70	13	18	0	8	0	0	178	33	145
West	282	2138	162	97	0	75	1	0	2755	220	2535
All	2660	13188	509	379	2	836	2	1	17577	887	16690

2001-2005

District	Shop & Establishments	Companies	Factory	MSME	Cooperative Society	Society Registration	Food & Safety Board	Khadi Vikas Board	All	Multiple	Total
Central	935	2387	54	125	1	119	0	2	3623	122	3501
East	502	1315	32	12	1	237	0	0	2099	135	1964
New Delhi	191	781	67	10	4	45	0	0	1098	96	1002
North	1	5	7	2	0	0	0	0	15	2	13
North East	138	76	8	4	3	44	0	2	275	13	262
North West	191	985	12	27	0	103	1	0	1319	54	1265
Shahdara	820	1745	21	98	3	325	3	1	3016	137	2879
South	160	1607	9	2	0	163	0	0	1941	53	1888
South East	280	1669	69	38	0	89	0	0	2145	146	1999
South West	81	53	15	14	0	20	0	0	183	28	155
West	343	1656	87	58	0	167	0	0	2311	153	2158
All	3642	12279	381	390	12	1312	4	5	18025	939	17086

Table 3: Distribution of Enterprises by Districts & Acts as per year of Initial Operation

2006-2010

District	Shop & Establishments	Companies	Factory	MSME	Cooperative Society	Society Registration	Food & Safety Board	Khadi Vikas Board	All	Multiple	Total
Central	6476	8622	141	437	1	414	2	2	16095	433	15662
East	1165	2752	76	42	0	292	0	2	4329	257	4072
New Delhi	765	2133	73	24	0	89	7	0	3091	202	2889
North	3737	4002	305	632	0	383	22	1	9082	240	8842
North East	1125	541	19	104	0	428	2	4	2223	70	2153
North West	1073	3591	39	54	0	292	1	1	5051	208	4843
Shahdara	2666	4059	57	215	2	529	5	10	7543	259	7284
South	1069	4901	24	38	3	431	3	5	6474	331	6143
South East	1450	10942	489	257	0	410	5	3	13556	562	12994
South West	2776	1829	19	307	0	282	7	0	5220	141	5079
West	1821	4495	89	110	0	286	2	1	6804	271	6533
All	24123	47867	1331	2220	6	3836	56	29	79468	2974	76494

2011-2015

District	Shop & Establishments	Companies	Factory	MSME	Cooperative Society	Society Registration	Food & Safety Board	Khadi Vikas Board	All	Multiple	Total
Central	11143	2929	19	78	0	218	0	2	14389	702	13687
East	6814	2568	14	42	1	212	0	1	9652	413	9239
New Delhi	3307	1695	23	6	0	70	3	0	5104	483	4621
North	2908	689	4	20	0	32	136	0	3789	259	3530
North East	3732	428	4	9	0	210	1	5	4389	71	4318
North West	6603	2708	12	16	2	351	19	1	9712	387	9325
Shahdara	8507	2480	49	69	0	311	0	7	11423	373	11050
South	8136	3296	12	17	0	258	1	6	11726	638	11088
South East	11246	3868	62	115	0	113	1	0	15405	942	14463
South West	3994	579	6	6	0	36	0	0	4621	137	4484
West	16317	3624	17	27	0	535	55	1	20576	850	19726
All	82707	24864	222	405	3	2346	216	23	110786	5255	105531

Table 3: Distribution of Enterprises by Districts & Acts as per year of Initial Operation

All												
Year	Central	East	New Delhi	North	North East	North West	Shahdara	South	South East	South West	West	Total
Before 1980	1254	49	168	1	6	124	146	157	228	18	312	2463
1981-1990	2024	211	362	4	22	298	451	649	744	29	877	5671
1991-2000	4355	1238	1060	69	130	1380	1820	1949	2009	145	2535	16690
2001-2010	19163	6036	3891	8855	2415	6108	10163	8031	14993	5234	8691	93580
2011-2015	13687	9239	4621	3530	4318	9325	11050	11088	14463	4484	19726	105531
All	40483	16773	10102	12459	6891	17235	23630	21874	32437	9910	32141	223935

Table 4: Distribution of Enterprises by Acts/Authority of Registration as per Employment Size Class

Employment Range	Act										Total
	Shop & Establishment	Company	Factory	MSME	Cooperative Society	Society Registration	Food & Safety	Khadi & Vikas Board	All	Multiple	
<=5	104739	38890	1279	5774	11	2780	56	67	153596	6259	147337
6-10	7240	25098	478	1851	12	612	3	4	35298	1893	33405
11-15	1346	9566	326	826	1	275	0	206	12546	1053	11493
16-20	616	25822	177	69	1	138	0	1	26824	499	26325
21-25	181	1197	84	36	0	67	0	0	1565	176	1389
26-30	150	862	100	17	1	49	0	0	1179	160	1019
31-35	78	480	54	9	0	17	0	0	638	84	554
36-40	99	473	51	10	0	21	0	0	654	97	557
41-45	60	199	15	4	0	12	0	1	291	38	253
46-50	88	336	45	9	1	13	0	0	492	81	411
51-100	116	739	81	18	0	36	0	0	990	150	840
More than 100	51	307	35	18	0	5	0	0	416	64	352
All	114764	103969	2725	8641	27	4025	59	279	234489	10554	223935

Table 5: Distribution of Traced & Working Enterprises & Employment as per NIC-2 digit, 2008

SIno	NIC-2 Digit	Description	No. of Working & Traced Enterprises	%	Employment	%
1	1	Crop And Animal Production, Hunting And Related Service Activities	318	0.14	3269	0.21
2	10	Manufacture Of Food Products	1813	0.81	17912	1.15
3	11	Manufacture Of Beverages	187	0.08	2107	0.14
4	12	Manufacture Of Tobacco Products	65	0.03	512	0.03
5	13	Manufacture Of Textiles	1795	0.8	13067	0.84
6	14	Manufacture Of Wearing Apparel	3748	1.67	27081	1.74
7	15	Manufacture Of Leather And Related Products	736	0.33	8357	0.54
8	16	Manufacture Of Wood And Products Of Wood And Cork, Except Furniture;	207	0.09	1847	0.12
9	17	Manufacture Of Paper And Paper Products	809	0.36	6755	0.43
10	18	Printing And Reproduction Of Recorded Media	2397	1.07	17033	1.09
11	19	Manufacture Of Coke And Refined Petroleum Products	68	0.03	819	0.05
12	20	Manufacture Of Chemicals And Chemical Products	1448	0.65	17193	1.1
13	21	Manufacture Of Pharmaceuticals, Medicinal Chemical And Botanical Products	661	0.3	8872	0.57
14	22	Manufacture Of Rubber And Plastics Products	1795	0.8	18929	1.22
15	23	Manufacture Of Other Non-Metallic Mineral Products	279	0.12	2625	0.17
16	24	Manufacture Of Basic Metals	961	0.43	10118	0.65
17	25	Manufacture Of Fabricated Metal Products, Except Machinery And Equipment	2058	0.92	20200	1.3
18	26	Manufacture Of Computer, Electronic And Optical Products	1414	0.63	14190	0.91
19	27	Manufacture Of Electrical Equipment	1838	0.82	18946	1.22
20	28	Manufacture Of Machinery And Equipment N.E.C.	1112	0.5	13490	0.87
21	29	Manufacture Of Motor Vehicles, Trailers And Semi-Trailers	924	0.41	9547	0.61
22	30	Manufacture Of Other Transport Equipment	209	0.09	1936	0.12
23	31	Manufacture Of Furniture	704	0.31	5070	0.33
24	32	Other Manufacturing	1901	0.85	16335	1.05
25	33	Repair And Installation Of Machinery And Equipment	412	0.18	3170	0.2
26	35	Electricity, Gas, Steam And Air Conditioning Supply	28	0.01	454	0.03
27	36	Water Collection, Treatment And Supply	261	0.12	1985	0.13
28	37	Sewerage	14	0.01	185	0.01
29	38	Waste Collection, Treatment And Disposal Activities; Materials Recovery	143	0.06	997	0.06
30	39	Remediation Activities And Other Waste Management Services	108	0.05	439	0.03
31	41	Construction Of Buildings	9826	4.39	103606	6.65
32	42	Civil Engineering	372	0.17	3365	0.22
33	43	Specialized Construction Activities	1107	0.49	10536	0.68
34	45	Wholesale And Retail Trade And Repair Of Motor Vehicles And Motorcycles	6127	2.74	29231	1.88
35	46	Wholesale Trade, Except Of Motor Vehicles And Motorcycles	20442	9.13	131324	8.43
36	47	Retail Trade, Except Of Motor Vehicles And Motorcycles	46604	20.81	184784	11.87

SIno	NIC-2 Digit	Description	No. of Working & Traced Enterprises	%	Employment	%
37	49	Land Transport And Transport Via Pipelines	2219	0.99	15143	0.97
38	51	Air Transport	120	0.05	1163	0.07
39	52	Warehousing And Support Activities For Transportation	2372	1.06	19557	1.26
40	53	Postal And Courier Activities	640	0.29	4463	0.29
41	55	Accommodation	1626	0.73	18107	1.16
42	56	Food And Beverage Service Activities	5090	2.27	28656	1.84
43	58	Publishing Activities	2611	1.17	26363	1.69
44	59	Motion Picture, Video And Television Programme Production, Sound Recording	703	0.31	7187	0.46
45	60	Broadcasting And Programming Activities	169	0.08	1769	0.11
46	61	Telecommunications	1565	0.7	11366	0.73
47	62	Computer Programming, Consultancy And Related Activities	4302	1.92	40370	2.59
48	63	Information Service Activities	2541	1.13	18977	1.22
49	64	Financial Service Activities, Except Insurance And Pension Funding	5114	2.28	42272	2.71
50	65	Insurance, Reinsurance And Pension Funding, Except Compulsory Social	505	0.23	3618	0.23
51	66	Other Financial Activities	2405	1.07	18454	1.19
52	68	Real Estate Activities	10703	4.78	91407	5.87
53	69	Legal And Accounting Activities	3445	1.54	27768	1.78
54	70	Activities Of Head Offices; Management Consultancy Activities	17561	7.84	133758	8.59
55	71	Architecture And Engineering Activities; Technical Testing And Analysis	1166	0.52	10047	0.65
56	72	Scientific Research And Development	307	0.14	3703	0.24
57	73	Advertising And Market Research	1868	0.83	14800	0.95
58	74	Other Professional, Scientific And Technical Activities	3062	1.37	18436	1.18
59	75	Veterinary Activities	21	0.01	144	0.01
60	77	Rental And Leasing Activities	1045	0.47	5143	0.33
61	78	Employment Activities	2179	0.97	14130	0.91
62	79	Travel Agency, Tour Operator And Other Reservation Service Activities	5523	2.47	32303	2.07
63	80	Security And Investigation Activities	2028	0.91	17102	1.1
64	81	Services To Buildings And Landscape Activities	174	0.08	1038	0.07
65	82	Office Administrative, Office Support And Other Business Support Activities	8269	3.69	72687	4.67
66	84	Public Administration And Defence; Compulsory Social Security	127	0.06	730	0.05
67	85	Education	4968	2.22	33760	2.17
68	86	Human Health Activities	2510	1.12	20123	1.29
69	87	Residential Care Activities	512	0.23	3993	0.26
70	88	Social Work Activities Without Accommodation	3077	1.37	18751	1.2
71	90	Creative, Arts And Entertainment Activities	758	0.34	5798	0.37
72	91	Libraries, Archives, Museums And Other Cultural Activities	40	0.02	313	0.02
73	93	Sports Activities And Amusement And Recreation Activities	58	0.03	424	0.03
74	94	Activities Of Membership Organizations	3626	1.62	21315	1.37
75	95	Repair Of Computers And Personal And Household Goods	3234	1.44	14669	0.94
76	96	Other Personal Service Activities	2801	1.25	10915	0.7
All			223935	100.00	1557008	100.00

Table 6: Distribution of Enterprises and Employment at District & Sub-District Level

District	Sub District/ Tehsil	Enterprises	Employment
CENTRAL	CIVIL LINES	6554	49745
CENTRAL	KAROL BAGH	8917	54999
CENTRAL	KOTWALI	25012	149800
EAST	GANDHI NAGAR	734	4817
EAST	MAYUR VIHAR	7731	62824
EAST	PREET VIHAR	8308	59573
NEW DELHI	CHANAKYAPURI	1116	13199
NEW DELHI	DELHI CANTONMENT	2621	31022
NEW DELHI	VASANT VIHAR	6365	59319
NORTH	ALIPUR	2930	9369
NORTH	MODEL TOWN	7538	25875
NORTH	NARELA	1991	8060
NORTH EAST	KARAWAL NAGAR	1359	6653
NORTH EAST	SEELAMPUR	4279	15789
NORTH EAST	YAMUNA VIHAR	1253	5261
NORTH WEST	KANJHWALA	203	991
NORTH WEST	ROHINI	8329	64602
NORTH WEST	SARASWATI VIHAR	8703	81304
SHAHDARA	SEEMA PURI	1560	8172
SHAHDARA	SHAHDARA	3367	21994
SHAHDARA	VIVEK VIHAR	18703	138555
SOUTH	HAUZ KHAS	10624	104290
SOUTH	MEHRAULI	5520	57087
SOUTH	SAKET	5730	43841
SOUTH EAST	DEFENCE COLONY	12385	79749
SOUTH EAST	KALKAJI	14958	103543
SOUTH EAST	SARITA VIHAR	5094	25150
SOUTH WEST	DWARKA	7142	25752
SOUTH WEST	KAPASHERA	209	891
SOUTH WEST	NAJAFGARH	2559	10698
WEST	PATEL NAGAR	21576	136157
WEST	PUNJABI BAGH	6549	59114
WEST	RAJOURI GARDEN	4016	38813
Total		223935	1557008