



**GOVERNMENT OF NATIONAL CAPITAL TERRITORY OF
DELHI**

**PRICE – INDICES
2022-23**

**DIRECTORATE OF ECONOMICS & STATISTICS
&
OFFICE OF THE CHIEF REGISTRAR
(BIRTHS & DEATHS)**

**VIKAS BHAWAN-II, 3rd FLOOR 'B'-WING
UPPER BELA ROAD, NEAR METCALF HOUSE, DELHI-110054**

Ph: 23812845, Email: jddes.delhi@gov.in, Website: www.des.delhigovt.nic.in



**GOVERNMENT OF NATIONAL CAPITAL TERRITORY OF
DELHI**

**PRICE – INDICES
2022-23**

**DIRECTORATE OF ECONOMICS & STATISTICS
&
OFFICE OF THE CHIEF REGISTRAR
(BIRTHS & DEATHS)**

**VIKAS BHAWAN-II, 3rd FLOOR 'B'-WING
UPPER BELA ROAD, NEAR METCALF HOUSE, DELHI-110054
Ph: 23812845, Email: jddes.delhi@gov.in, Website: www.des.delhigovt.nic.in**

PREFACE

The "Price Indices in Delhi-2022-23" is the revised and updated edition of the earlier publication prepared by this Directorate. The publication incorporates the time series of different Price Indices such as CPI for Industrial Workers, CPI Combined and Wholesale Price Index (WPI). Efforts have been made to incorporate latest data in this publication. The Publication has been prepared with a view that these indices are available at one place for reference as and when required.

A Consumer Price Index (CPI) is designed to measure the changes over time in general level of retail prices of essential selected goods and services that households purchase for the purpose of consumption. Such changes affect the real purchasing power of consumers' income and their welfare. The Consumer Price Index Numbers for Industrial Workers (CPI-IW) are being compiled, maintained and disseminated by the Labour Bureau since its inception in October, 1946. These index numbers are being utilized for fixation and revision of wages and determination of variable Dearness Allowances payable to workers in organized sectors of the economy. Despite the coverage being limited to Industrial Workers, presently, the CPI(IW) are also utilized as an indicator for measuring inflationary trend in the country and for policy formulations. The Labour Bureau, Ministry of Labour & Employment, Chandigarh has replaced the old series of Base Year 2001=100 with the new series of Base Year 2016=100 w.e.f. Sept. 2020. The National Statistical Office (NSO), Ministry of Statistics & Programme Implementation has revised the Base Year of the Consumer Price Index (Combined) from 2010=100 to 2012=100 with effect from the release of indices for the month of January 2015. The Office of the Economic Adviser in the Department for Promotion of Industry and Internal Trade, Ministry of Commerce & Industry is responsible for compiling WPI and releasing it. Latest revision of WPI has been done by shifting base year from 2004-05 to 2011-12.

The strenuous efforts put in by the officers / officials of the Price & Coordination Unit of the Directorate of Economics & Statistics, Delhi are highly appreciated to bring out this report.

I hope this report will be of immense help to the policy makers, Planners and Research Scholars interested in the study of Price trends in Delhi and at National level.

Constructive comments and suggestions, if any, for improving the future publications are most welcome.

DELHI
October, 2023

NIHARIKA RAI, IAS
SECRETARY (PLANNING)

**TEAM OF OFFICERS / OFFICIALS ASSOCIATED WITH THE
PREPARATION OF THE REPORT**

- | | | |
|-------------------------|---|-----------------------|
| 1. SH. G.S. RAWAT | : | DIRECTOR |
| 2. SH. SHAN-E-ALAM | : | JOINT DIRECTOR |
| 3. SH. BHAG SINGH MEENA | : | DEPUTY DIRECTOR |
| 4. SH. S. S. RAWAT | : | ASSISTANT DIRECTOR |
| 5. SH. VIMAL JAIN | : | STATISTICAL OFFICER |
| 6. MS. ANUJ KUMARI | : | STATISTICAL OFFICER |
| 7. MS. SUMAN LAMBRA | : | STATISTICAL ASSISTANT |
| 8. MS. SHWETA SINGH | : | STATISTICAL ASSISTANT |

Table of Contents

S.No.	Contents	Page No.
(A)	Chapter – 1	
	Introduction	1-17
(B)	Chapter – 2	
	Brief Analysis	18-25
(C)	Statistical Tables with Base Year (2016=100)	
<u>CONSUMER PRICE INDEX (C.P.I.)NUMBERS FOR INDUSTRIAL WORKERS IN DELHI</u>		
1.1	Month & Year wise Consumer Price Index numbers for Industrial Workers in Delhi (Annual Average during 2018-2022)	26-27
1.2	Group wise Consumer Price Index numbers for Industrial Workers in Delhi (General index).	28
1.3	Group wise Weight for Delhi & All India	29
1.4	Group wise C.P.I. numbers for Industrial Workers in Delhi for the Financial Years 2021-22 & 2022-23. (Base year 2016=100) and Weighting Diagram.	30-31
1.5	Group/Month & Year wise Consumer Price Index numbers for Industrial Workers in Delhi for the 2021 & 2022	32
1.6.1 to 1.6.15	Group wise CPI for Industrial Workers in r/o Metro Cities & All India from January 2022 to March 2023	33-47
1.7	Group wise CPI for Industrial Workers (average annual Index) in r/o Metro Cities & All India for the Year 2021 & 2022	48
1.8	Group wise CPI for Industrial Workers (average index) in r/o Metro Cities & All India for the Year 2021-22 & 2022-23	49

<u>CONSUMER PRICE INDEX NUMBERS FOR INDUSTRIAL WORKERS OF METRO-CITIES AND ALL INDIA</u>		
2.1.1	State/Centre wise Consumer Price Index numbers for Industrial Workers of All India. (Base Year 2016=100) for 2022	50-52
2.1.2	State/Centre wise Consumer Price Index numbers for Industrial Workers of All India (Base Year 2016=100) for 2022-23.	53-55
2.2	Consumer Price Index numbers for Industrial Workers of Metro-cities & All India for year 2018-2022 (2016=100) and Diagram depicting % variation over previous year.	56
2.3	Month & Year wise Consumer Price Index numbers for Industrial Workers of All India General Index. (Base year 2016=100).	57
2.4	Group wise Consumer Price Index numbers for Industrial Workers of all India (Base year 2016=100)	58
<u>CONSUMER PRICE INDEX NUMBERS FOR RURAL, URBAN & COMBINED</u>		
3.1	Month Wise General CPI for Rural, Urban and Combined for Delhi and All India (Base Year 2012=100)	59
<u>WHOLESALE PRICE INDEX</u>		
4.1	Month & Year wise Wholesale Price Index Numbers of all India(Base year 2011-12=100)	60
4.2	Index numbers of Wholesale prices in India by major groups and sub groups (Base Year 2011-12=100).	61-65

(D)	Statistical Tables with Base Year (1982=100 & 2001=100)	
5.1	Month & Year wise Consumer Price Index numbers for Industrial Workers in Delhi (General Index during 2007-2019)	66
5.2	Group -wise Consumer Price Index numbers for Industrial Workers in Delhi (Annual Average) during (2007-2019)	67
5.3	State/Centre wise Consumer Price Index numbers for Industrial Workers of All India. (Base Year 2001=100) from year 2012 to 2019	68-70
5.4	Consumer Price Index numbers for Industrial Workers of Metro Cities & All India 2002-2019 (Base Year 1982=100 upto 2005, Base Year 2001=100 From 2006)	71
5.5	Month & Year wise Consumer Price Index numbers for Industrial Workers of All India (General Index) (Base year 1982=100 and 2001=100)	72
5.6	Group wise Consumer Price Index numbers for Industrial workers of all India (General Index) (Base year 2001=100)	73
ANNEXURES (Facsimile of Schedules)		74-85

Report on “Price Indices 2022-23”

(Based on CPI (Industrial Workers) with base year 2016)

HIGHLIGHTS

General Index:

During 2022-23, CPI (IW), Kolkata recorded the highest increase (8.2%) while it was (7.9%) in Delhi followed by Mumbai (5.2%) , Chennai (4.5%) and All India (6.1%).

Food & Beverages Group:

In Food & Beverages Group, Delhi recorded the highest increase (10.0%) in 2022-23 while Mumbai recorded lowest increase of (5.1%) in 2022-23. At All India level, an increase of (6.2%) was recorded in this group.

Pan, Supari , Tobacco & Intoxicants group:

In Pan, Supari, Tobacco & Intoxicants group, Delhi has highest increase of (6.8%) in 2022-23 while lowest increase of (2.9%) was observed in case of Chennai. At All India level, an increase of (5.5%) was recorded during 2022-23.

Clothing & Footwear group:

Clothing & Footwear group exhibited highest increase in case of Delhi (16.4%) while lowest increase was observed in Chennai & Kolkata each (0.9%). At All India level, an increase of (7.1%) was recorded during 2022-23.

Housing group:

Housing group indicated highest increase in case of Mumbai (4.3%), while lowest increase was observed in Chennai (0.4%). For Delhi it was (1.4%) while at All India level it was increased by (3.6%) during 2022-23.

Fuel & Light Group:

In Fuel & Light Group (10.7%) increase was observed in case of Chennai, which is the lowest amongst Metro cities. Highest increase was noticed in case of Kolkata (30.3%). For Delhi it was (19.6%) while at all India level an increase of (13.5%) is observed during 2022-23.

Miscellaneous Group:

In Miscellaneous Group (consists of items falling under the categories of medicines, medical services, education services, stationery, recreation, transport and communication, personal care effects, household requisites and other services viz. hair cutting, tailoring etc), the highest increase was noticed in case of Kolkata (8.4%) followed by Delhi (6.1%), Chennai (3.9%) and Mumbai (2.6%). At all India level (5.4%) increase was observed in Misc. Group during 2022-23.

Price trends of Consumer Price Index (IW) in Major Cities/centres for the Year 2022-23:

Among the selected major cities/centres (i.e Delhi, Mumbai, Kolkata, Chennai, Bengluru, Hyderabad, Jaipur, Indore, Faridabad, Ghaziabad, Bhopal, Chandigarh, Varanasi, Amritsar & Lucknow) Delhi has Seventh lowest average Consumer Price Index (IW) and Kolkata has highest CPI (IW) for the year 2022-23.

CHAPTER 1

INTRODUCTION

A Consumer Price Index (CPI) is designed to measure the changes over time in general level of retail prices of selected goods and services that households purchase for the purpose of consumption. Such changes affect the real purchasing power of consumer's income and their welfare. The CPI measures price changes by comparing, through time, the cost of a fixed basket of commodities. The basket is based on the expenditures of a target population in a certain reference period. Since the basket contains commodities of unchanging or equivalent quantity and quality, the index reflects only pure price. Traditionally, CPI numbers were originally introduced to provide a measure of changes in the living costs of workers, so that their wages could be compensated to the changing level of prices. However, over the years, CPIs have been widely used as a macroeconomic indicator of inflation, and also as a tool by Government and Central Bank for targeting inflation and monitoring price stability. CPI is also used as deflators in the National Accounts. Therefore, CPI is considered as one of the most important economic indicators.

Given the many uses of CPIs, it is unlikely that one index can perform equally satisfactory in all applications. Therefore, there is a practice of compiling several CPI variants for specific purpose. Each index should be properly defined and named to avoid confusion. The purpose of CPI should influence all aspects of its construction.

In India, segment specific CPIs, namely CPI (IW), CPI (AL), CPI (RL) are being compiled regularly, catering to the need of specific population group. CPI

(UNME), which has been discontinued w.e.f. December 2010, was meant for urban non-manual employees. All these above-mentioned indices depict change in the level of average retail prices of goods and services consumed by specific segment of population, which they refer.

The price index is an indicator of the average price movement over time of a fixed basket of goods and services. The constitution of the basket of goods and services is done keeping into consideration whether the changes are to be measured in retail, wholesale or producer prices etc. The basket will also vary for economy- wide, regional, or sector specific series. At present, separate series of index numbers are compiled to capture the price movements at retail and wholesale level in India. There are four main series of price indices compiled at the national level. Out of these four, Consumer Price Index for Industrial Workers (CPI- IW), CPI(C) and Consumer Price Index for Agricultural Labourers / Rural Labourers (CPI - AL/ RL), are consumer price indices. The Wholesale Price Index (WPI) number is a measure of wholesale price movement for the economy.

The concept of wholesale price has hitherto covered the general idea of capturing all transactions carried out in the domestic market. The weights of the WPI do not correspond to contribution of the goods concerned either to value- added or final use. In order to give this idea a more precise definition, it was decided to define the universe of the wholesale price index as comprising as far as possible all transactions at first point of bulk sale in the domestic market.

Consumer Price Index for Industrial Workers

The old series of CPI-IW was with base year 2001=100 covered 78 centres spread across the country. To capture the latest consumption pattern of working class families, the Labour Bureau had conducted the base revision exercise of CPI-IW to update the base year of the old series of CPI-IW (2001=100) to the base 2016=100. The main objective of the exercise is to bring out the new series of All-India and individual centre-wise Consumer Price Indices for Industrial Workers based on the latest consumption pattern of the target population, industrial workers in instant case.

The following are the key features of the old series of CPI-IW with base year 2001=100:

- The old series of CPI-IW on base 2001=100 was compiled for 78 selected centres in the country. The All-India Consumer Price Index for Industrial Workers was the weighted average of these 78 centre indices.
- The Centre-wise Weighting Diagrams for the Index have been derived from the results of Working Class Family Income and Expenditure Surveys conducted during 1999-2000 in all the 78 selected centres.
- The present system of price collection passes through three tier scrutiny- at the first tier, the prices collected by the price collectors are scrutinized by the Price Supervisors who are middle level officers of the State Government working in same department - at the second stage prices are scrutinized by the Officers of the Regional Offices of the Labour Bureau and at the third tier they are scrutinized by the Officers at Head Quarter. These price data, after cleaning them for conceptual/factual errors at various levels, are utilised for the compilation of index numbers.
- Housing group index is compiled by following the Chain Base method, in which rent movements are compared with the last six monthly periods and not with the base period. Rent index is calculated once in every six months viz., Jan. and July and kept constant for the following five months.
- The index is compiled by using Laspeyres' base weighted formula. The indices are compiled on monthly basis with a time lag of one month and are

released through website, Press Note, Monthly Index letter and Indian Labour Journal.

From the above account, it may be mentioned that broad features of old series (2001=100) have been retained under the new series with base 2016=100 as well, however, following are the improvements in the updated series of the CPI-IW with base 2016=100:

- Under updated series, the number of States/UTs has been increased from 25 to 28 States/UTs.
- Under revised series, the coverage of centres has been increased from 78 centres to 88 centres across the country. Out of these 88 centres, 65 centres are common and 23 are new centres.
- Under updated series, the coverage of markets has also been increased from 289 markets under old series to 317 markets across the country.
- Under revised series, the sample size has also been increased from 41040 working class families to 48384 during the main survey across the 88 centres.
- As per the direction of Technical Advisory Committee (TAC) on Statistics of Prices and Cost of Living (SPCL) the Classification of Individual Consumption by Purpose (COICOP) method for grouping & sub-grouping of consumption items, is being used for derivation of weighting diagrams under new series.
- Under the new series 2016=100, as per the direction of Technical Advisory Committee (TAC) on Statistics of Prices and Cost of Living (SPCL), the Geometric mean based methodology (using the GM of Price relative) is being used for compilation of indices instead of Arithmetic mean being used in old series 2001=100.

The Group wise Weights (Base year 2001=100 and Base year 2016=100) of Consumer price Index for industrial workers(CPI -IW) in r/o Delhi Centre are as under:-

S.No.	Group	Weights Base Year (2001=100)	Weights Base Year (2016=100)
1	Food & Beverages (Food Group)*	43.75	36.13
2	Pan, Supari, Tobacco & Intoxicants	2.12	0.84
3	Fuel & Light	5.39	7.05
4	Housing	20.72	24.29
5	Clothing & Footwear (Clothing Bedding & Footwear)*	5.68	5.43
6	Miscellaneous	22.34	26.26
	General Index	100	100

*Group Name-under old series with base year (2001=100)

The group level weights under new series (2016=100) and old series of CPI-IW (2001=100) are depicted in above charts. It may be observed that the weight of Food & Beverages (earlier Food group) is declining whereas the weight of Miscellaneous group comprising as Medical care, Education, Recreation and Amusement , Transport & communication , Personal Care and effects, other Miscellaneous Items is rising under CPI-IW (2016=100) vis-à-vis CPI-IW (2001=100).

Linking Factor: On the introduction of revised series, it is essential to provide a linking factor between the old series and the revised series so that the new

series, when released, may be compared with the outgoing one. Under the 'Arithmetic Conversion method' the linking factor or conversion factor of the two series is worked out by taking the ratio of the averages of old series indices to the new series indices. This method had been adopted for linking 1982 series with 2001 series. Following this approach, the linking factor has been derived by taking the ratio of average of monthly indices of old series to new series for the period of 12 months (from September 2019 to August 2020). The linking factor of Metropolitan cities and all India are given below :

S.No.		Linking Factor
1	All India	2.88
2	Delhi	2.82
3	Mumbai	2.91
4	Chennai	2.50
5	Kolkata	2.46

METHODOLOGY FOR COMPILATION OF CONSUMER PRICE INDEX NUMBERS FOR INDUSTRIAL WORKERS COMPILED BY LABOUR BUREAU, GOVT OF INDIA(BASE : 2016=100)

The main components for constructing consumer price index numbers are the weights and prices. Weights are the share of actual expenditure on each commodity during the base period and base prices are the annual average of item level prices during the 2016 in respect of items retained in the index basket. Following theory of fixity the weights and base prices remains fixed throughout the lifetime of the series and only current period prices are collected on weekly, monthly etc basis to capture the price movement at the market level.

Statistically, index compilation involves two step procedures:

1. In the first step, the elementary price indices or item level indices for the elementary aggregates are calculated by using the "Jevons formula" which uses Geometric Mean of Price Relatives where price relatives are calculated by dividing the current price by base price. These elementary price indices are used to obtain higher-level indices using the associated expenditure weights during the index compilation.

2. In the second step, these elementary level indices are averaged (aggregated) to calculate the higher level indices using consumption expenditure as weights associated with each level using Laspeyres' index formula.

An algebraic form of Laspeyres' index formula can be written as:

$$I_n = \frac{\sum q_0^i p_n^i}{\sum q_0^i p_0^i} \text{-----}(1)$$

Where,

p_n^i = price for i th item at time 'n' (current period)

p_0^i = price for i th item at time '0' (base period)

q_0^i = quantity of i th item purchased during the base period.

which is equivalent to:

$$I_n = \frac{\sum q_0^i p_0^i \times (p_n^i / p_0^i)}{\sum q_0^i p_0^i}$$

$$I_n = \sum (p_n^i / p_0^i) \times w_i \text{-----}(2)$$

Where w_i is the weight assigned to the i^{th} item or share of expenditure for i^{th} item in base period and the expression (p_n^i / p_0^i) is called the Price Relative (PR) which is the ratio of the price of an item in the current period to its price in the base period. Thus, eq. (2) represents the weighted average of the elementary price indices where weights being the expenditure incurred on the i^{th} item in the base period. Under the new series of CPI-IW (2016=100), Labour Bureau has adopted the 'Jevons formula' for compiling indices therefore, in this case p_n and p_0 are the averages (using Geometric Mean) of the prices for the i^{th} item collected from different markets in current period and base period respectively. Thereafter, GM has been used for averaging the price relatives of i^{th} item across all markets in a given centre.

Rationale for using Jevons Index formula for elementary price index:

The Laspeyres' index formula has been used for index compilation because of its inherent practical advantages. In old series with base 2001=100, the arithmetic mean of price relative has been used for compilation of indices. However, as per the direction of Technical Advisory Committee on Statistics of Prices and Cost of Living (TAC on SPCL) during its meeting held on 22.10.18, New Delhi, Labour Bureau has used the Geometric Mean of price relative (Jevons formula) instead of Arithmetic Mean for compiling indices under new series. It may be noted that the Geometric Mean of price relative (Jevons formula) is less influenced by extreme prices than the ratio of arithmetic mean prices and hence, the elementary price indices are less volatile in nature. Moreover, the Jevons approach satisfies the axioms or statistical tests like time reversal test, commensurability test and transitivity test.

Construction of All India Index:

The All India index is the weighted average of the 88 centre level indices. The centre weights are being determined as the ratio of product of average consumption expenditure per family as per the main survey and the number of working class families represented by a centre in a State to sum of such products over all the centres. The provisional indices compiled by Labour Bureau were discussed in detail and approved by Technical advisory Committee on Statistics of Prices and Cost of Living Index Number during its 67th meeting held on 28.01.2020. Subsequently, these provisional indices were discussed and deliberated in detail by Securities Trading Corporation during its meeting held on 27.02.2020. The Securities Trading Corporation also gave its concurrence to the methodology of trial indices compiled by Labour Bureau.

Treatment of Seasonal items:

Special care has been taken in case of seasonal items. In case of fruits and vegetables items, month-wise seasonality have been fixed in the base year itself on the basis of their availability in different months of the year i.e. a particular fruit/vegetable is priced during the months it is available in the market in saleable quantity. The seasonality had been determined by examining the availability of price data of various items from markets of the centre. Besides, month-wise expenditure reported on these items during the main survey was also taken into account while finalising the seasonality. The item weights within the vegetables and fruits sub-group of food group vary from month to month on the basis of vegetables and fruit items retained in the index basket for all the 12 months separately of a year. Seasonality once finalised would remain fixed throughout the lifetime of the series.

Treatment of Fair Prices:

Under the Public Distribution System, Government has been supplying some of the essential items to the public at concessional rates and this facility is also available to working class population. For PDS items like Rice, Wheat, Sugar, etc., prices are collected from both open market and PDS shops as these items are purchased by the target population from both the sources. The quantity availed from PDS is as per entitlement of the beneficiary/household which may be less than actual requirement and in that case the remaining quantity is purchased from open market to meet the family's total requirement. It may be noted that the price of PDS items used in index computation is weighted average of open market and PDS prices wherein weight is the proportion of total requirement met from these two sources for targeted beneficiary. For non-targeted beneficiary, only open market prices are used. Thus, in case of PDS items due care has been taken to arrive at weighted price (PDS & Open Market) of the item. With the use of weighted average price of PDS items, the open market prices are appropriately accounted for. For all remaining items under index basket, only open market prices have been used.

Index for Housing Group:

The change in rent and related charges, which constitute a single term under housing group, is captured through Repeat House Rent Survey (RHRS) which is conducted in the form of six monthly rounds. The house rent index is utilized in the compilation of centre level general index and the centre level general indices are utilized in the compilation of a weighted average All-India Index. In the compilation of all-India group indices, a separate all-India Housing group index is also compiled like all other groups such as Food& Beverages; Pan, Supari, Tobacco& Intoxicants; Fuel & Light; Clothing& Footwear; and Miscellaneous.

Objective and Definitions:

The main objective of the Repeat House Rent Survey is to collect data on house rent and related charges from a fixed sample of dwellings, according to a prescribed procedure, in order to measure the changes in rents for a fixed standard accommodation and amenities as revealed through working class family income & expenditure survey. Rent for the sampled dwelling is the price for housing which goes into the index compilation. 'Rent' implies compensation payable to the owner of specified accommodation by the occupant. In case of self-owned dwelling the comparable rent which is the rent paid for the similar rented accommodation in the same building or nearby locality has been taken into account. The comparable rented dwelling may even be occupied by nonworking class family.

Unit: The 'Unit' of the survey is the dwelling (and not the sample worker/family) occupied by the sample family. Thus, the identity of dwelling is important and not the identity of the family. Further, the dwelling must be under occupation of a family of a sample worker belonging to any of the seven sectors of employment being covered under the definition of industrial workers in the Working Class Family Income & Expenditure Survey. Three types of dwellings viz. Rented, Rent Free and Self-owned have been covered across all the centres as is done under the old series with base 2001=100.

Rented dwelling is defined as the entire portion of the residential accommodation hired by the sampled working class family on payment of rent. Rent -free dwelling is defined as the entire portion of the residential accommodation occupied by the sampled family which has been provided by the employer of the sampled worker without charging any rent.

Self -owned dwelling means a residential accommodation of which any member of the family of the worker is an owner and the same is occupied by the family.

Round/Sub-round: The total span of six months to cover all the selected dwellings is known as a round and every month of the round is termed as a sub-round for this survey. All the dwellings covered in a sub-round are surveyed again after an interval of six months in the subsequent round. There are two rounds of the House Rent Survey in a year.

Sector: A set of similar establishments classified by the industrial divisions as per their economic activities are termed as a 'Sector'. Seven sectors covered in the main survey are Factories, Mines, Plantations, Railways, Public Motor Transport Undertakings, Electricity Generating & Distributing Establishments and Ports & Docks.

Weights: In RHRS, the indices in respect of three categories of houses viz. Rented, Self-owned and Rent Free are combined using the weights which are proportions of families residing respectively in the three categories covered during the main working class family income & expenditure survey.

For the purpose of house rent survey, sampled dwellings for a centre are divided into six equal groups and one group is covered in the month. Thus, a group covered in a given month (say, January) will be covered again after six months (i.e. in July). The order of visits to the sampled dwellings is kept same from round to round in order to ensure a gap of six months between two consecutive visits, to each sampled dwelling. Thus a span of six months to cover all the selected dwellings forms a round and every month is termed as a sub- round for this survey. The index for the housing group is revised twice in a year i.e. in January and July month of every year. The index is calculated once in every six months and is kept constant for the remaining five months of the round on account of the tendency of house rent to remain more or less

stable over short periods. The same practice is also followed in the existing series of CPI-IW(2001=100).

During the survey, a sampled dwelling may be found as casualty due to reasons like demolition, utilization of the dwelling for non-residential purpose, rent cannot be collected due to legal dispute, major structural changes etc. Under such circumstances, a dwelling is substituted with similar type/category of dwelling i.e. rented is substituted with rented dwelling, rent free is substituted by rent free dwelling and self-owned by self-owned dwelling. In case, a dwelling is treated as casualty in successive two rounds, ensured after a second visit in a sub-round, the dwelling should be substituted by a dwelling available in the frame in a circular manner but nature of dwelling must be same. However, the substituted dwelling may belong to a different sector as compared to the original dwelling.

Compilation of Housing Index

Chain Base Method: It is unrealistic to assume that all the sample dwellings would remain either occupied or be in the same condition during every successive Round. Therefore, instead of working out price relatives directly with reference to the base year prices, as in the case of other items of the index basket, the rent relatives of all the dwellings in the sample are worked out on the basis of total rents of the sampled dwellings in current Round of RHRS with reference to the previous Round of RHRS. The rent relative of the current Round is then multiplied with the house rent index of the previous Round to obtain the house rent index for the current Round and in this manner a chain to the base year is established. This is how Chain Base Method is followed in the compilation of House Rent Index.

In this method the total net rent of the sample dwellings during the current round (6 month period) is expressed as a percentage of the corresponding net rent of the previous round and this percentage is multiplied by the rent index of the preceding round to yield the index for the current round. The house rent index for the rented and comparable rented dwellings is compiled separately by this procedure. Since, the rent for rent-free dwellings is taken as zero; the house rent index for such dwellings is kept frozen at 100.

The three housing indices (rented, self-owned and rent free houses) are combined using weights which are proportions of working class families residing in rented houses, self-owned houses and rent free houses as revealed by the main survey. The Index is calculated on round basis once in every half year and utilized in the compilation of centre-wise general indices for January and July.

CONSUMER PRICE INDEX COMPILED BY NATIONAL STATISTICAL OFFICE, GOVT OF INDIA (Base Year 2012 = 100)

The National Statistical Commission (NSC), under Dr. C. Rangarajan, in its Report (2001), observed that CPI numbers catering to specific segments of the population can be considered as partial indices only. These indices are not oriented to reflect a true picture of the price behavior and effect of price fluctuations of various goods and services consumed by the general population in the country, over a period of time. This Commission, therefore, recommended for compilation of CPI for rural and urban areas. The recommendation of NSC (2001) was further endorsed by the Standing Committee on Finance (2009-10) (15th Lok Sabha, 6th Report on Inflation and Price Rise), which asked the Government to act upon this recommendation without any further delay and accordingly expedite the compilation of the nation-wide Consumer Price Index for urban and rural areas, as a prelude to formulating a national CPI.

In this backdrop, the Technical Advisory Committee (TAC) on Statistics of Prices and Cost of Living (SPCL) in its forty-fourth meeting held on 30th December, 2005 took the following decisions:

a) The resources proposed to be utilized for revision of CPI (UNME) may be used for compilation of CPI (Urban) and CPI (Rural).

b) Existing series of CPI (UNME) may be continued without revision till CPI (Urban) series gets stabilized.

c) Consumer Expenditure Survey (CES) data of the NSS5 61st round may be used for construction of weighing diagrams for proposed CPI (Urban) and CPI (Rural) series.

Accordingly, the National Statistical Office (NSO), Ministry of Statistics and Programme Implementation started releasing Consumer Price Indices (CPI) on base 2010=100 for all-India and States/UTs separately for rural, urban and combined every month with effect from January, 2011. The Price Reference Year for this series is 2010, whereas Weight Reference Year is 2004-05. Ideally, these two reference years should be identical so that prices are collected of those items which belong to the basket of consumers in true sense. It is not always possible to have both the reference years identical, but it is desirable to minimize the gap between these two. The base year has been accordingly revised from 2010 to 2012, and the revised series is released w.e.f. January, 2015. The basket of items and their weighing diagrams have been prepared using the Modified Mixed Reference Period (MMRP) data of Consumer Expenditure Survey (CES), 2011-12, which is 68th Round of National Sample Survey (NSS). This has been done to make it consistent with the international practice of shorter reference period for most of the food items and longer reference period for the items of infrequent consumption/purchase. The weighing diagrams of old series of CPI were based on the Uniform Reference Period (URP) data of CES, 2004-05, of the 61st Round of NSS. With this change in the weighing diagrams, the gap between Weight Reference Year and Price Reference Year (Base Year), which was six years in the old series, has now been reduced to six months only. Many methodological changes have also been incorporated in the revised series to make the indices more robust.

The year in which the average prices, of goods and services consumed, are taken as base price and equated to 100 and accordingly, CPI for Base Year is 100. The year in respect of which the data of consumer expenditure survey was used to compute weights for aggregating elementary indices to compile higher level indices i.e. sub-group, group and overall indices. MMRP - Data on expenditure incurred are collected for the items falling under edible oil, egg, fish and meat, vegetables, fruits, spices, beverages and processed foods, pan, tobacco and intoxicants during last seven days; clothing, bedding, footwear, education, medical (institutional), durable goods during last 365 days; all other food, fuel and light, miscellaneous goods and services including non-institutional medical; rents and taxes during last 30 days.

WEIGHTING DIAGRAM

Weighing diagram gives the share of each item in the total consumption expenditure in a CES. The weighing diagrams for the CPI series (Base 2012=100) have been derived on the basis of average monthly consumer expenditure of an urban/rural household obtained from MMRP data of NSS 68th round Consumer Expenditure Survey (2011-12). Only consumption expenditure has been considered for the purpose of preparation of weighing diagrams. Non-consumption expenditures, like legal expenses etc. have been excluded.

Further, it is neither necessary nor desirable to include all consumption items figuring in the Consumer Expenditure Survey (Schedule – 1.0, NSS 68th Round) in the CPI basket. Inclusion of items having negligible weights/shares and also consumed by very few households will make the basket big and virtually have no impact of these items on the overall index. On the other hand, large number of items may also increase the chance of non-response error. At the same time, the basket should not be too small. It should be of optimum size

covering all sections of items in a more representative way. Keeping only one benchmark criterion may not lead to a representative basket, therefore, multiple norms have been designed to include administered items, items having reasonable share of expenditure, and items consumed by most of the households in a given State/UT.

WHOLE SALE PRICE INDEX COMPILED BY O/o ECONOMIC ADVISOR, GOVT OF INDIA (Base Year 2004-05 = 100)

IMPORTANCE OF WHOLESALE PRICE INDEX

In a dynamic world, prices do not remain constant. Inflation rate calculated on the basis of the movement of the Wholesale Price Index (WPI) is an important measure to monitor the dynamic movement of prices. As WPI captures price movements in a most comprehensive way, it is widely used by Government, banks, industry and business circles. Important monetary and fiscal policy changes are often linked to WPI movements. Similarly, the movement of WPI serves as an important determinant, in formulation of trade, fiscal and other economic policies by the Government of India. The WPI indices are also used for the purpose of escalation clauses in the supply of raw materials, machinery and construction work.

NODAL OFFICE FOR COMPILATION OF WPI

The Office of the Economic Adviser in the Department for Promotion of Industry & Internal Trade, Ministry of Commerce & Industry is responsible for compiling WPI and releasing it. The Office published for the first time, the index number of wholesale prices, with base week ended August 19, 1939=100, from the week commencing January 10, 1942. Since 1947 the index is being published regularly.

Revision of base year of All-India Wholesale Price Index (WPI) from 2004-05 to 2011-12.

The Government periodically reviews and revises the base year of the macroeconomic indicators as a regular exercise to capture structural changes in the economy and improve the quality, coverage and representativeness of

the indices. In this direction, the base year of All-India WPI has been revised from 2004-05 to 2011-12 by the Office of Economic Advisor (OEA), Department for Promotion of Industry & International Trade, Ministry of Commerce and Industry to align it with the base year of other

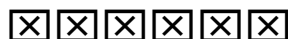
Macroeconomic indicators like the Gross Domestic Product (GDP) and Index of Industrial Production (IIP).

The Wholesale Price Index (WPI) series in India has undergone six revisions in 1952-53, 1961-62, 1970-71, 1981-82, 1993-94 and 2004-05 so far. The current series is the seventh revision. The revision entails shifting the base year to 2011-12 from 2004-05, changing the basket of commodities and assigning new weights to the commodities. It has generally been the practice to undertake the revisions on the advice of a Working Group constituted each time. For the new series with base 2011-12=100, a Working Group was constituted on 19th March 2012 chaired by Late Dr. Saumitra Chaudhri, Member, erstwhile Planning Commission and comprised most stakeholders.

New Weighting Structure

The major changes in weights, number of items and quotations between WPI 2004-05 and WPI 2011-12 are given in the table below.

Major Group	Weights		No. of Items		No. of Quotations	
	2004-05	2011-12	2004-05	2011-12	2004-05	2011-12
All Commodities	100	100	676	697	5482	8331
PRIMARY ARTICLES	20.12	22.62	102	117	579	983
FUEL & POWER	14.91	13.15	19	16	72	442
MANUFACTURED PRODUCTS	64.97	64.23	555	564	4831	6906



BRIEF ANALYSIS**CHAPTER – 2****TREND OF OVERALL INFLATION RATES IN DELHI, BASED ON CPI (IW)**

Overall monthly inflation rates (point to point basis) in Delhi, based on CPI (IW) are given in following Statement 1.

STATEMENT-1 MONTH AND YEAR WISE CONSUMER PRICE INDEX NUMBERS FOR INDUSTRIAL WORKERS IN DELHI (GENERAL INDEX) DURING 2018-2022					
Month/Year	Base Year 2016=100				
	2018	2019	2020	2021	2022
1	2	3	4	5	6
January	94.7	103.5	111.3	111.8	120.0
February	94.3	103.9	110.3	112.8	120.2
March	93.6	105.3	110.3	114.1	121.8
April	93.6	106.0	111.7	114.8	125.5
May	93.6	106.7	111.3	114.8	124.3
June	94.0	107.1	110.3	115.4	124.8
July	100.4	108.9	112.1	116.4	126.1
August	101.4	109.2	112.4	117.1	128.0
September	101.8	110.3	112.7	117.6	128.7
October	101.8	109.6	113.2	119.0	129.9
November	100.7	109.6	113.8	122.4	130.0
December	100.4	110.3	112.3	120.4	128.7
Annual Average	97.5	107.5	111.8	116.4	125.7
% variation over previous year	7.0	10.3	4.0	4.1	8.0

Inflation, based on CPI (IW), has been ranging from 4.0% to 10.3% during the years 2018 to 2022. The price rise was recorded as 8.0% in the year 2022 as compared to 4.1% during the year 2021.

Month wise and average annual inflation rates observed in the CPI (IW) in Delhi are given as follows:

Statement 2						
MONTH AND YEAR WISE VARIATION IN CONSUMER PRICE INDEX NUMBERS FOR INDUSTRIAL WORKERS IN DELHI (GENERAL INDEX) DURING 2018-2022 (In %)						
Month /Year	Base Year 2016=100					
	2018	2019	2020	2021	2022	Average Rate
1	2	3	4	5	6	7
January	7.2	9.3	7.5	0.4	7.3	6.3
February	6.8	10.2	6.2	2.3	6.6	6.4
March	5.5	12.5	4.7	3.4	6.7	6.6
April	5.2	13.2	5.4	2.8	9.3	7.2
May	4.7	14.0	4.3	3.1	8.3	6.9
June	5.1	13.9	3.0	4.6	8.1	6.9
July	7.6	8.5	2.9	3.8	8.3	6.2
August	8.3	7.7	2.9	4.2	9.3	6.5
September	9.1	8.3	2.2	4.3	9.4	6.7
October	9.6	7.7	3.3	5.1	9.2	7.0
November	7.6	8.8	3.8	7.6	6.2	6.8
December	7.6	9.9	1.8	7.2	6.9	6.7
Annual Variations	7.0	10.3	4.0	4.1	8.0	6.7

Month wise analysis of variations observed in the CPI (IW) in Delhi reveals that annual average inflation rates during the period 2018 to 2022 was ranging between 6.2% during the month of July and 7.2% in the month of April. During the year 2022, the maximum inflation rate was observed in the month of September with 9.4% and minimum in the month of November with 6.2 % increase over the corresponding month of previous year.

A comparative picture of Group wise CPI (IW) in Delhi During the years 2018 to 2022 may be seen in the Statement 3 as follows:

STATEMENT-3						
GROUP WISE CONSUMER PRICE INDEX NUMBERS FOR INDUSTRIAL WORKERS IN DELHI (ANNUAL AVERAGE)						
	GROUP	Base Year 2016=100				
		2018	2019	2020	2021	2022
1	2	3	4	5	6	7
1	FOOD & BEVERAGES	101.9	107.7	114.7	117.9	130.7
	% variation over previous year	1.4	5.7	6.5	2.8	10.9
2	PAN, SUPARI, TOBACCO & INTOXICANTS	117.5	120.3	131.3	129.7	138.7
	% variation over previous year	6.4	2.4	9.1	-1.2	6.9
3	CLOTHING & FOOTWEAR	107.0	109.8	110.9	130.4	151.7
	% variation over previous year	7.2	2.6	1.0	17.6	16.3
4	HOUSING	84.2	111.1	116.9	118.9	120.4
	% variation over previous year	26.8	31.9	5.2	1.7	1.3
5	FUEL AND LIGHT	109.8	101.3	78.6	97.8	117.1
	% variation over previous year	5.6	-7.7	-22.4	24.4	19.7
6	MISCELLANEOUS	104.6	107.6	110.8	113.5	120.1
	% variation over previous year	2.0	2.9	3.0	2.4	5.8
7	GENERAL INDEX	97.5	107.5	111.8	116.4	125.7
	% variation over previous year	7.0	10.3	4.0	4.1	8.0

FOOD& BEVERAGES

In food & beverages group, an inflation rate of 10.9% was observed during the year 2022, whereas it was 2.8% during the year 2021.

PAN, SUPARI, TOBACCO & INTOXICANTS

In pan, supari, tobacco and intoxicant group, an inflation rate of 6.9% was observed during the year 2022, whereas there was a negative inflation rate of 1.2% during 2021.

CLOTHING & FOOTWEAR

In Clothing, bedding and footwear, an inflation rate of 16.3% was observed during the year 2022, whereas it was 17.6% during the year 2021.

HOUSING

As per CPI in housing group, an inflation rate of 1.3% was observed during the year 2022, whereas it was 1.7% during the year 2021.

FUEL AND LIGHT

In fuel and light group, an inflation rate of 19.7% was observed during the year 2022, whereas it was 24.4% during the Year 2021.

MISCELLANEOUS

The miscellaneous Group consists of items falling under the categories of medicines, medical services, education services, stationery, recreation, transport and communication, personal care effects, household requisites and other services viz. hair cutting, tailoring etc. In Miscellaneous group CPI, an inflation rate of 5.8% was observed during the year 2022, whereas it was 2.4% during the year 2021.

INFLATION RATES CALCULATED BY CPI (IW) IN DELHI AND ALL INDIA

A comparative picture showing the annual inflation rates in Delhi observed during the years 2018 to 2022 as compared to all India may be seen in the Statement 4 below:

Statement -4					
YEAR WISE INFLATION RATES AS PER CPI (IW) IN DELHI AS COMPARED TO ALL INDIA (GENERAL INDEX) DURING 2018-2022 (Base Year 2016=100)					
Year	% variation over previous year				
	2018	2019	2020	2021	2022
DELHI	7.0	10.3	4.0	4.1	8.0
ALL INDIA	4.9	7.6	5.6	4.8	5.9

It is evident from the above statement that during the years 2018, 2019 and 2022 Delhi has higher inflation rates as compared to All India. However, during the year 2020 and 2021 Delhi has lower inflation rates as compared to All India. During the year 2022, Inflation rate in Delhi was 8.0% and in All India, it was 5.9% over previous year.

FINANCIAL YEAR WISE TREND OF OVERALL INFLATION RATES IN DELHI AND ALL INDIA BASED ON DIFFERENT PRICE INDICES VIZ. CPI (IW), CPI (COMBINED) & WPI:

A comparative picture showing the annual inflation rates in Delhi observed during the financial years 2020-21, 2021-22 and 2022-23 as compared to all India level may be seen in the following statement:

*Statement-5****CPI(IW) and CPI(C) for DELHI***

INDICES	2020-21	2021-22	% Variation	2021-22	2022-23	% Variation
CPI(IW)	112.4	118.3	5.2	118.3	127.6	7.9
CPI (Combined)	149.8*	157.8	5.3	157.8	164.1	4.0

***CPI (combined) is not provided for the month April & May of the year 2020 by NSO.**

CPI(IW), CPI(C) and WPI for All INDIA

INDICES	2020-21	2021-22	% Variation	2021-22	2022-23	% Variation
CPI(IW)	117.6	123.6	5.1	123.6	131.1	6.1
CPI (Combined)	155.3	163.8	5.5	163.8	174.7	6.7
WPI	123.4	139.4	13.0	139.4	152.5	9.4

CPI(IW) Base year 2016=100

CPI(C) Base year 2012 = 100

WPI Base year 2011-12=100

It is evident from the above statement that average annual inflation rates, based on CPI (IW), for the years 2021-22 and 2022-23, were 5.1% and 6.1% respectively at all India level, whereas as per CPI (Combined) compiled by the NSO for the years 2021-22 and 2022-23 the inflation rates stood at 5.5% and 6.7% respectively. However, inflation rate based on WPI for the years 2021-22 and 2022-23 were 13.0% and 9.4% respectively.

For Delhi, average annual inflation rates, based on CPI (IW), for the years 2021-22 and 2022-23, were 5.2% and 7.9% respectively as compared to 5.3%, and 4.0 % inflation rates calculated for Delhi based on CPI (Combined) compiled by the NSO during the years 2021-22 and 2022-23 respectively.

Price trends of Consumer Price Index (IW) in Major Cities for Calendar Year 2022:-

A comparative picture showing the average CPI (IW) for the calendar year 2022 in respect of 15 selected major cities/centres may be seen in Statement 6.

Statement-6

S.No.	Centre	Average General Index-2022	Inflation Rate
1.	Mumbai	122.7	5.2
2.	Bengluru	122.8	4.4
3.	Indore	123.1	5.3
4.	Jaipur	123.1	6.3
5.	Amritsar	124.8	2.5
6.	Bhopal	124.9	4.9
7.	Delhi	125.7	8.0
8.	Chennai	127.3	3.9
9.	Faridabad	127.7	6.9
10.	Hyderabad	128.3	5.9
11.	Varanasi	130.9	4.9
12.	Ghaziabad	131.3	6.9
13.	Chandigarh	133.2	6.9
14.	Lucknow	136.1	8.0
15.	Kolkata	137.4	9.0

Price trends of Consumer Price Index (IW) in Major Cities for Financial Year 2022-23:-

A comparative picture showing the average CPI (IW) for the financial year 2022-23 in respect of 15 selected major cities/ centres may be seen in Statement 7.

Statement-7

S.No.	Centre	Average General Index-2022-23	Inflation Rate
1.	Mumbai	124.1	5.2
2.	Bengluru	124.4	5.0
3.	Indore	124.9	6.0
4.	Jaipur	125.4	7.6
5.	Bhopal	126.4	4.6
6.	Amritsar	126.7	3.8
7.	Delhi	127.6	7.9
8.	Chennai	129.0	4.5
9.	Faridabad	130.5	7.8
10.	Hyderabad	130.8	6.8
11.	Varanasi	133.0	5.6
12.	Ghaziabad	133.4	6.9
13.	Chandigarh	136.6	8.7
14.	Kolkata	138.7	8.2
15.	Lucknow	138.7	8.5

It is observed from statement 6 and 7 for calendar year i.e. 2022 and for financial year i.e. 2022-23 that Delhi has the seventh lowest Consumer Price Index (IW) among the selected 15 major cities/centres for calendar year i.e. 2022 and also for 2022-23 while Kolkata and Lucknow has maximum Consumer Price Index (IW) .

XXXXXXXXXX

Table No.1.1					
MONTH AND YEAR WISE CONSUMER PRICE INDEX NUMBERS FOR INDUSTRIAL WORKERS IN DELHI (ANNUAL AVERAGE)					
Month /Year	Base Year 2016=100				
	2018	2019	2020	2021	2022
1	2	3	4	5	6
January	94.7	103.5	111.3	111.8	120.0
February	94.3	103.9	110.3	112.8	120.2
March	93.6	105.3	110.3	114.1	121.8
April	93.6	106.0	111.7	114.8	125.5
May	93.6	106.7	111.3	114.8	124.3
June	94.0	107.1	110.3	115.4	124.8
July	100.4	108.9	112.1	116.4	126.1
August	101.4	109.2	112.4	117.1	128.0
September	101.8	110.3	112.7	117.6	128.7
October	101.8	109.6	113.2	119.0	129.9
November	100.7	109.6	113.8	122.4	130.0
December	100.4	110.3	112.3	120.4	128.7
Annual Average	97.5	107.5	111.8	116.4	125.7
% variation over previous year	7.0	10.3	4.0	4.1	8.0
SOURCE: LABOUR BUREAU CHANDIGARH					

**GENERAL CONSUMER PRICE INDEX (IW) OF DELHI
FOR THE YEAR 2022 (MONTH WISE)**

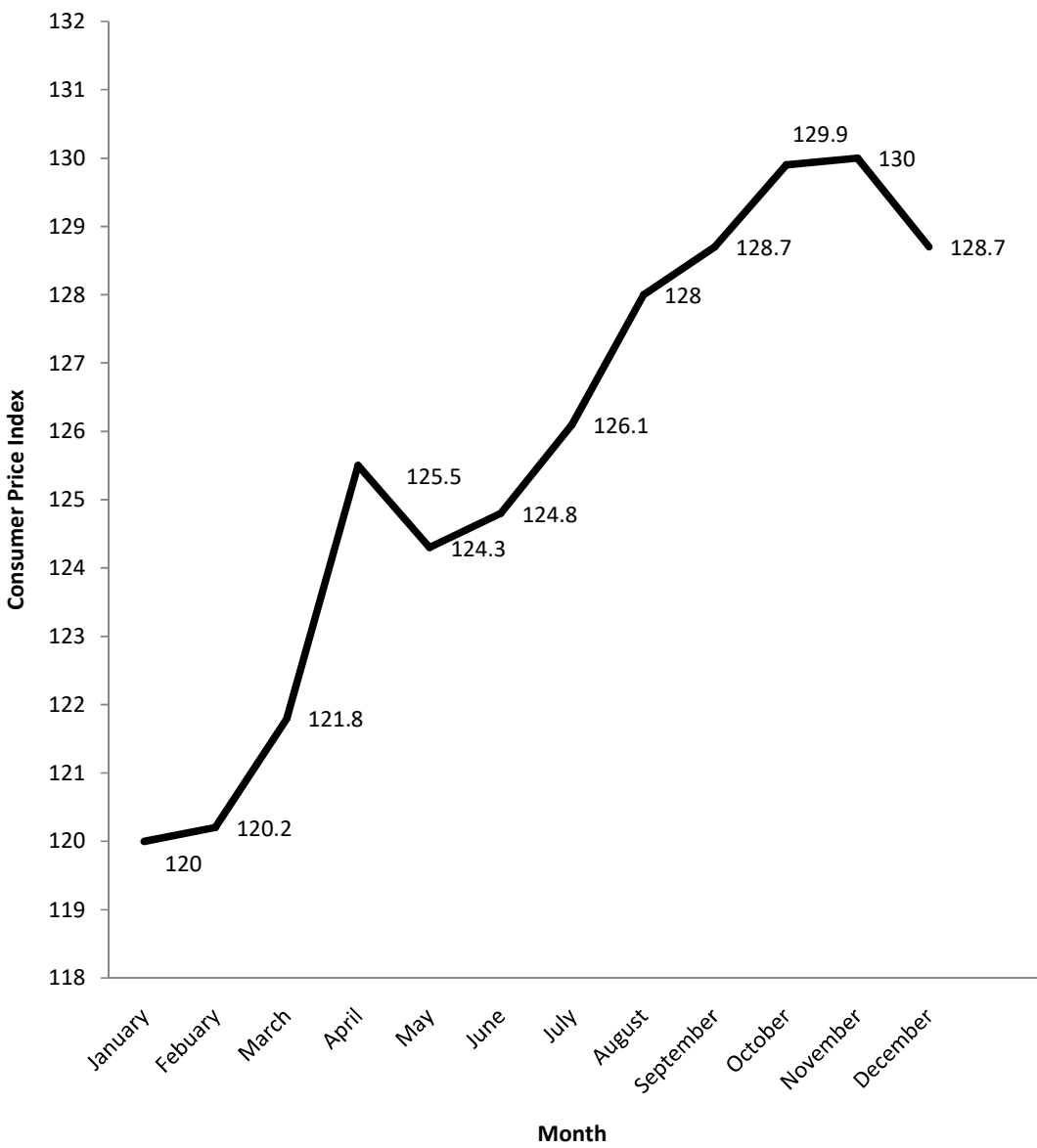


TABLE No.: 1.2						
GROUP WISE CONSUMER PRICE INDEX NUMBERS FOR INDUSTRIAL WORKERS IN DELHI (GENERAL INDEX)						
	GROUP	Base Year 2016=100				
		2018	2019	2020	2021	2022
1	2	3	4	5	6	7
1	FOOD & BEVERAGES	101.9	107.7	114.7	117.9	130.7
	% variation over previous year	1.4	5.7	6.5	2.8	10.9
2	PAN, SUPARI, TOBACCO & INTOXICANTS	117.5	120.3	131.3	129.7	138.7
	% variation over previous year	6.4	2.4	9.1	-1.2	6.9
3	CLOTHING & FOOTWEAR	107.0	109.8	110.9	130.4	151.7
	% variation over previous year	7.2	2.6	1.0	17.6	16.3
4	HOUSING	84.2	111.1	116.9	118.9	120.4
	% variation over previous year	26.8	31.9	5.2	1.7	1.3
5	FUEL AND LIGHT	109.8	101.3	78.6	97.8	117.1
	% variation over previous year	5.6	-7.7	-22.4	24.4	19.7
6	MISCELLANEOUS	104.6	107.6	110.8	113.5	120.1
	% variation over previous year	2.0	2.9	3.0	2.4	5.8
7	GENERAL INDEX	97.5	107.5	111.8	116.4	125.7
	% variation over previous year	7.0	10.3	4.0	4.1	8.0
SOURCE:- LABOUR BUREAU, CHANDIGARH BASE YEAR 2016=100						

TABLE No: 1.3			
GROUP WISE WEIGHTS FOR DELHI & ALL INDIA			
(Base year 2016=100)			
S.No.	GROUP	WEIGHT	
1	2	DELHI	ALL INDIA
I	FOOD & BEVERAGES	36.13	39.17
II	PAN,SUPARI,TABACCO & INTOXICANTS	0.84	2.07
III	CLOTHING & FOOTWEAR	5.43	6.08
IV	HOUSING	24.29	16.87
V	FUEL & LIGHT	7.05	5.5
VI	MISCELLANEOUS	26.26	30.31
	GENERAL INDEX	100.00	100.00
Source:- Labour Bureau Chandigarh			

TABLE No: 1.4					
GROUP WISE CONSUMER PRICE INDEX NUMBERS FOR INDUSTRIAL WORKERS IN DELHI FOR THE YEAR 2021-22 & 2022-23 (Financial Year wise)					
(Base year 2016=100)					
S.No.	GROUP	WEIGHT	2021- 22	2022- 23	% variation
1	2	3	5	6	7
I	FOOD & BEVERAGES	36.13	120.6	132.7	10.0
II	PAN,SUPARI,TABACCO & INTOXICANTS	0.84	131.6	140.6	6.8
III	CLOTHING & FOOTWEAR	5.43	134.4	156.5	16.4
IV	HOUSING	24.29	119.2	120.9	1.4
V	FUEL & LIGHT	7.05	102.1	122.1	19.6
VI	MISCELLANEOUS	26.26	114.9	121.9	6.1
	GENERAL INDEX	100.00	118.3	127.6	7.9
Source:- Labour Bureau Chandigarh					

**WEIGHTING DIAGRAM OF DIFFERENT GROUPS
OF CONSUMER PRICE INDEX IN DELHI BASE YEAR
(2016=100)**

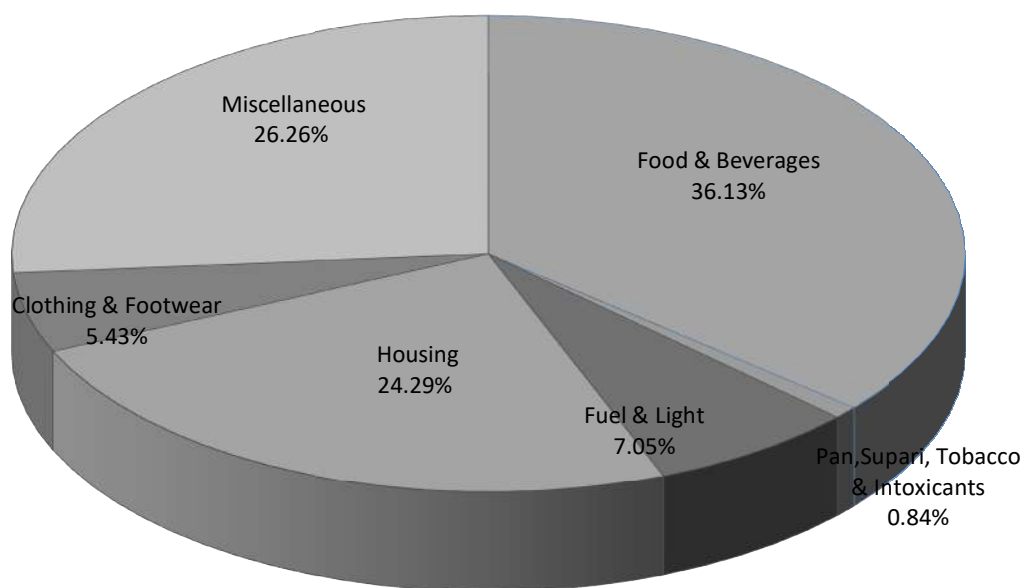


TABLE No : 1.5							
GROUP WISE / MONTH AND YEAR WISE CONSUMER PRICE INDEX NUMBERS FOR INDUSTRIAL WORKERS IN DELHI FOR 2021 AND 2022							
MONTH/ YEAR							
	FOOD & BEVERAGES	PAN,SUPARI, TOBACCO & INTOXICANTS	CLOTHING & FOOTWEAR	HOUSING	FUEL & LIGHT	MISC.	GENERAL INDEX
1	2	3	4	5	6	7	8
Base Year 2016=100							
2021							
JANUARY	111.9	128.4	120.3	118.5	82.0	111.1	111.8
FEBRUARY	112.5	128.5	125.5	118.5	87.9	111.4	112.8
MARCH	114.3	128.2	125.8	118.5	96.7	111.7	114.1
APRIL	115.5	128.2	126.6	118.5	95.6	112.6	114.8
MAY	115.5	128.1	126.7	118.5	95.6	112.8	114.8
JUNE	116.1	127.7	131.5	118.5	95.6	113.1	115.4
JULY	117.6	128.4	131.6	119.3	98.6	113.3	116.4
AUGUST	119.4	128.4	132.1	119.3	98.6	113.5	117.1
SEPTEMBER	119.3	128.4	133.1	119.3	104.5	113.6	117.6
OCTOBER	122.4	129.7	133.1	119.3	106.2	114.1	119.0
NOVEMBER	127.6	136.0	139.0	119.3	106.2	118.4	122.4
DECEMBER	123.2	136.0	139.0	119.3	106.2	116.9	120.4
Average	117.9	129.7	130.4	118.9	97.8	113.5	116.4
2022							
JANUARY	121.9	136.0	139.0	119.8	106.2	116.9	120.0
FEBRUARY	122.2	136.0	140.5	119.8	106.2	117.0	120.2
MARCH	126.5	136.0	140.7	119.8	106.2	117.1	121.8
APRIL	131.8	135.3	150.8	119.8	112.1	120.4	125.5
MAY	128.3	135.3	152.3	119.8	112.1	120.2	124.3
JUNE	128.7	135.3	152.5	119.8	118.4	119.8	124.8
JULY	130.5	135.3	152.5	121.0	122.7	119.8	126.1
AUGUST	133.7	142.6	159.0	121.0	124.3	120.9	128.0
SEPTEMBER	135.5	142.6	159.3	121.0	124.3	120.9	128.7
OCTOBER	137.5	142.6	159.5	121.0	124.3	122.5	129.9
NOVEMBER	137.8	143.9	157.4	121.0	124.3	122.9	130.0
DECEMBER	134.0	143.9	157.4	121.0	124.3	123.2	128.7
Average	130.7	138.7	151.7	120.4	117.1	120.1	125.7
Source:- Labour Bureau Chandigarh							
Base Year 2016=100							

Table No: 1.6.1						
Group/Sub-Group wise Consumer Price Index Numbers For Industrial Workers in 4 Metro Cities and All India						
Month : January, 2022						
Base Year : 2016=100						
Sl. NO.	Group/Sub-Group	All India	Delhi	Mumbai	Chennai	Kolkata
I	Food & Beverages					
(a)	Cereals & Products	114.9	125.0	110.6	145.0	110.5
(b)	Pulses & Products	91.0	102.5	98.9	79.1	93.8
(c)	Milk and Milk Products	119.5	120.4	113.5	116.1	128.2
(d)	Meat & Fish	136.3	121.3	127.1	159.1	126.8
(e)	Egg	124.5	140.6	118.7	115.2	124.4
(f)	Olis and Fats	165.2	160.0	155.7	149.2	160.6
(g)	Fruits Fresh & Dry	118.8	102.1	114.3	125.9	122.8
(h)	Vegetables	146.7	130.3	146.3	206.2	128.2
(i)	Sugar & Confectionery	110.9	107.8	100.6	156.9	108.9
(j)	Salt & Spices	114.1	111.8	105.1	109.2	118.3
(k)	Non-Alcoholic Beverages	127.5	140.2	132.9	99.9	107.0
(l)	Served & Packedged Processed Food	122.0	109.3	129.3	125.0	111.7
	Food & Beverages Group	124.7	121.9	123.3	132.9	121.3
II	Pan, Supari, Tobacco & Intoxicants	141.5	136.0	135.4	147.0	171.7
(a)	Clothing	123.3	140.5	114.6	116.6	125.0
(b)	Footwear	116.7	127.9	109.5	92.3	129.6
III	Clothing & Footwear	122.4	139.0	113.9	112.2	125.6
IV	Housing	118.9	119.8	115.4	105.8	160.0
V	Fuel & Light	158.0	106.2	156.3	155.9	171.6
VI	Miscellaneous					
(a)	Household Goods & Services	120.5	122.3	108.3	136.6	114.5
(b)	Health	121.1	109.7	104.0	134.5	112.8
(c)	Transport & Communication	131.3	128.8	105.3	146.9	117.6
(d)	Recreation & Entertainment	117.6	112.1	109.4	108.8	112.7
(e)	Education	117.3	109.4	118.0	114.8	121.3
(f)	Personal Care& Effects	115.1	112.0	115.0	119.4	111.9
	Miscellaneous Group	122.7	116.9	109.8	130.5	116.1
	General Index	125.1	120.0	119.2	126.4	131.2

Table No: 1.6.2						
Group/Sub-Group wise Consumer Price Index Numbers For Industrial Workers in 4 Metro Cities and All India						
Month : February, 2022						
Base Year : 2016=100						
Sl. NO.	Group/Sub-Group	All India	Delhi	Mumbai	Chennai	Kolkata
I	Food & Beverages					
(a)	Cereals & Products	113.2	124.8	110.7	115.2	112.5
(b)	Pulses & Products	90.8	101.6	98.7	78.3	95.3
(c)	Milk and Milk Products	119.4	120.4	113.2	116.1	128.8
(d)	Meat & Fish	138.3	120.7	127.3	159.2	128.9
(e)	Egg	122.7	136.0	112.0	112.9	121.6
(f)	Olis and Fats	166.4	158.1	156.0	150.8	162.5
(g)	Fruits Fresh & Dry	121.1	106.5	113.6	131.6	126.1
(h)	Vegetables	139.1	132.9	138.0	162.8	124.6
(i)	Sugar & Confectionery	110.5	105.8	100.4	152.3	105.9
(j)	Salt & Spices	114.9	112.2	105.4	110.3	128.4
(k)	Non-Alcoholic Beverages	127.9	140.2	133.1	100.2	111.3
(l)	Served & Packedged Processed Food	122.3	109.3	128.7	127.2	111.8
	Food & Beverages Group	123.9	122.2	122.1	126.0	122.2
II	Pan, Supari, Tobacco & Intoxicants	142.1	136.0	135.1	147.8	171.8
(a)	Clothing	124.1	142.2	114.6	116.6	123.0
(b)	Footwear	117.8	127.9	109.5	92.3	132.8
III	Clothing & Footwear	123.2	140.5	113.9	112.2	124.2
IV	Housing	118.9	119.8	115.4	105.8	160.0
V	Fuel & Light	158.6	106.2	156.3	155.9	179.7
VI	Miscellaneous					
(a)	Household Goods & Services	120.9	122.9	108.3	136.5	116.3
(b)	Health	121.9	109.7	105.8	134.5	113.3
(c)	Transport & Communication	131.5	128.8	105.3	147.2	118.7
(d)	Recreation & Entertainment	117.9	112.1	109.4	109.7	114.3
(e)	Education	117.6	109.4	118.0	114.8	121.3
(f)	Personal Care& Effects	115.6	111.9	115.0	119.4	114.3
	Miscellaneous Group	123.1	117.0	110.1	130.6	117.0
	General Index	125.0	120.2	118.8	123.7	132.4

Table No: 1.6.3						
Group/Sub-Group wise Consumer Price Index Numbers For Industrial Workers in 4 Metro Cities and All India						
Month : March, 2022						
Base Year : 2016=100						
Sl. NO.	Group/Sub-Group	All India	Delhi	Mumbai	Chennai	Kolkata
I	Food & Beverages					
(a)	Cereals & Products	114.7	125.9	111.4	114.8	112.9
(b)	Pulses & Products	91.1	102.1	99.5	77.4	94.8
(c)	Milk and Milk Products	120.5	120.5	113.4	116.5	129.5
(d)	Meat & Fish	144.6	121.1	137.2	175.3	130.8
(e)	Egg	117.8	113.7	104.9	103.6	121.3
(f)	Olis and Fats	176.0	160.3	178.5	175.6	163.2
(g)	Fruits Fresh & Dry	125.6	134.4	118.2	129.8	129.8
(h)	Vegetables	134.9	150.6	138.2	118.0	140.4
(i)	Sugar & Confectionery	110.4	105.0	100.3	151.7	107.9
(j)	Salt & Spices	116.6	114.8	106.9	113.9	126.7
(k)	Non-Alcoholic Beverages	128.8	139.4	136.7	101.2	108.3
(l)	Served & Packedged Processed Food	122.9	109.3	129.4	127.7	112.0
	Food & Beverages Group	125.4	126.5	125.0	124.6	125.1
II	Pan, Supari, Tobacco & Intoxicants	144.1	136.0	135.9	149.6	171.4
(a)	Clothing	124.8	142.4	115.8	116.6	123.0
(b)	Footwear	118.6	127.9	110.3	92.3	132.8
III	Clothing & Footwear	123.9	140.7	115.0	112.2	124.2
IV	Housing	118.9	119.8	115.4	105.8	160.0
V	Fuel & Light	160.6	106.2	158.9	155.9	184.3
VI	Miscellaneous					
(a)	Household Goods & Services	121.7	123.4	108.9	136.5	116.3
(b)	Health	122.4	109.2	106.2	134.5	113.3
(c)	Transport & Communication	133.0	129.2	107.2	147.7	118.8
(d)	Recreation & Entertainment	118.4	112.1	109.4	109.7	114.3
(e)	Education	117.7	109.4	118.0	114.8	121.3
(f)	Personal Care & Effects	116.4	112.8	116.3	119.4	114.3
	Miscellaneous Group	123.9	117.1	110.9	130.8	117.0
	General Index	126.0	121.8	120.4	123.2	134.0

Table No: 1.6.4						
Group/Sub-Group wise Consumer Price Index Numbers For Industrial Workers in 4 Metro Cities and All India						
Month : April, 2022						
Base Year : 2016=100						
Sl. NO.	Group/Sub-Group	All India	Delhi	Mumbai	Chennai	Kolkata
I	Food & Beverages					
(a)	Cereals & Products	116.1	129.9	111.7	109.5	116.6
(b)	Pulses & Products	91.3	101.9	99.2	75.9	91.6
(c)	Milk and Milk Products	121.9	125.3	114.6	116.6	130.4
(d)	Meat & Fish	145.8	134.1	134.8	176.2	136.3
(e)	Egg	116.1	106.5	102.4	105.8	121.9
(f)	Olis and Fats	181.2	166.6	181.6	182.7	169.1
(g)	Fruits Fresh & Dry	131.5	133.0	118.5	134.9	140.1
(h)	Vegetables	138.2	158.6	140.5	134.9	147.7
(i)	Sugar & Confectionery	110.4	105.2	100.4	148.1	108.6
(j)	Salt & Spices	118.7	132.1	107.2	114.9	128.2
(k)	Non-Alcoholic Beverages	129.2	140.8	135.2	102.3	109.2
(l)	Served & Packedged Processed Food	124.4	112.6	130.2	128.2	115.2
	Food & Beverages Group	127.5	131.8	125.5	126.5	129.3
II	Pan, Supari, Tobacco & Intoxicants	144.4	135.3	135.6	149.0	170.7
(a)	Clothing	126.4	153.5	115.8	116.6	123.1
(b)	Footwear	120.7	131.0	110.3	92.3	145.1
III	Clothing & Footwear	125.6	150.8	115.0	112.3	125.8
IV	Housing	118.9	119.8	115.8	105.8	160.0
V	Fuel & Light	164.9	112.1	110.3	160.6	199.3
VI	Miscellaneous					
(a)	Household Goods & Services	122.7	126.3	108.9	140.5	119.4
(b)	Health	123.6	109.5	106.2	136.9	114.4
(c)	Transport & Communication	137.3	133.6	107.8	151.1	119.8
(d)	Recreation & Entertainment	119.4	129.1	109.4	115.7	114.3
(e)	Education	117.7	109.4	118.0	114.8	121.3
(f)	Personal Care & Effects	117.8	119.0	116.3	120.4	117.2
	Miscellaneous Group	125.8	120.4	111.0	133.1	118.1
	General Index	127.7	125.5	120.7	124.8	137.3

Table No: 1.6.5						
Group/Sub-Group wise Consumer Price Index Numbers For Industrial Workers in 4 Metro Cities and All India						
Month : May, 2022						
Base Year : 2016=100						
Sl. NO.	Group/Sub-Group	All India	Delhi	Mumbai	Chennai	Kolkata
I	Food & Beverages					
(a)	Cereals & Products	116.6	135.0	111.5	106.8	115.6
(b)	Pulses & Products	91.1	102.0	99.6	75.8	93.0
(c)	Milk and Milk Products	122.8	125.3	114.9	116.7	130.4
(d)	Meat & Fish	148.5	136.0	137.4	178.7	139.5
(e)	Egg	118.1	105.9	107.1	109.0	122.0
(f)	Olis and Fats	183.9	166.0	189.7	183.9	168.8
(g)	Fruits Fresh & Dry	131.0	115.6	120.5	138.6	129.8
(h)	Vegetables	146.9	133.7	152.7	200.4	139.1
(i)	Sugar & Confectionery	110.2	105.3	100.5	131.6	108.5
(j)	Salt & Spices	120.8	132.3	109.5	115.2	123.6
(k)	Non-Alcoholic Beverages	130.3	140.8	136.5	102.8	110.4
(l)	Served & Packedged Processed Food	125.9	113.0	131.8	131.8	117.1
	Food & Beverages Group	129.5	128.3	128.3	133.4	128.1
II	Pan, Supari, Tobacco & Intoxicants	144.7	135.3	137.0	152.1	169.0
(a)	Clothing	127.3	155.0	116.7	117.5	117.5
(b)	Footwear	121.4	132.0	110.3	92.3	145.1
III	Clothing & Footwear	126.5	152.3	115.8	113.0	120.9
IV	Housing	118.9	119.8	115.4	105.8	160.0
V	Fuel & Light	169.7	112.1	164.8	165.7	208.5
VI	Miscellaneous					
(a)	Household Goods & Services	123.8	126.3	109.3	148.3	120.1
(b)	Health	124.3	109.5	106.4	141.4	114.4
(c)	Transport & Communication	137.8	133.1	107.8	150.3	119.8
(d)	Recreation & Entertainment	120.4	129.1	109.4	128.6	114.9
(e)	Education	118.0	109.4	118.0	114.8	121.3
(f)	Personal Care& Effects	118.7	119.0	118.8	121.4	117.6
	Miscellaneous Group	126.4	120.2	111.3	135.2	118.3
	General Index	129.0	124.3	122.1	128.4	137.4

Table No: 1.6.6						
Group/Sub-Group wise Consumer Price Index Numbers For Industrial Workers in 4 Metro Cities and All India						
Month : June, 2022						
Base Year : 2016=100						
Sl. NO.	Group/Sub-Group	All India	Delhi	Mumbai	Chennai	Kolkata
I	Food & Beverages					
(a)	Cereals & Products	116.4	136.8	111.7	94.9	116.0
(b)	Pulses & Products	91.0	101.6	99.6	75.6	93.2
(c)	Milk and Milk Products	123.1	125.7	115.2	116.7	130.4
(d)	Meat & Fish	150.7	137.4	140.6	188.4	139.2
(e)	Egg	122.9	107.1	115.9	129.2	121.6
(f)	Olis and Fats	181.9	165.8	189.6	182.1	168.8
(g)	Fruits Fresh & Dry	130.4	118.1	123.1	145.3	131.2
(h)	Vegetables	149.1	133.6	162.7	184.7	142.7
(i)	Sugar & Confectionery	110.3	106.2	101.1	126.9	108.6
(j)	Salt & Spices	121.5	132.5	110.9	117.2	122.8
(k)	Non-Alcoholic Beverages	130.5	138.2	136.7	103.3	110.0
(l)	Served & Packedged Processed Food	126.5	113.0	133.6	133.7	118.2
	Food & Beverages Group	130.0	128.7	130.6	132.3	128.9
II	Pan, Supari, Tobacco & Intoxicants	144.4	135.3	137.6	151.9	170.1
(a)	Clothing	127.9	155.2	116.9	117.5	117.5
(b)	Footwear	121.8	132.0	110.3	92.3	145.1
III	Clothing & Footwear	127.0	152.5	115.9	113.0	120.9
IV	Housing	118.9	119.8	115.4	105.8	160.0
V	Fuel & Light	172.8	118.4	173.0	165.7	210.1
VI	Miscellaneous					
(a)	Household Goods & Services	124.2	126.4	109.7	148.3	120.1
(b)	Health	124.7	109.5	106.4	141.4	114.4
(c)	Transport & Communication	135.6	131.5	107.4	147.9	119.3
(d)	Recreation & Entertainment	121.0	129.1	109.4	128.6	114.9
(e)	Education	117.9	109.4	118.0	114.8	121.3
(f)	Personal Care & Effects	119.2	120.0	119.7	121.4	117.6
	Miscellaneous Group	125.9	119.8	111.3	134.4	118.2
	General Index	129.2	124.8	123.4	127.8	137.8

Table No: 1.6.7						
Group/Sub-Group wise Consumer Price Index Numbers For Industrial Workers in 4 Metro Cities and All India						
Month : July, 2022						
Base Year : 2016=100						
Sl. NO.	Group/Sub-Group	All India	Delhi	Mumbai	Chennai	Kolkata
I	Food & Beverages					
(a)	Cereals & Products	117.0	141.6	112.0	87.0	115.9
(b)	Pulses & Products	91.5	102.4	99.6	76.6	95.1
(c)	Milk and Milk Products	123.4	126.1	115.3	116.7	129.5
(d)	Meat & Fish	147.8	137.7	138.4	183.3	134.7
(e)	Egg	122.4	110.4	117.0	121.7	121.2
(f)	Olis and Fats	178.5	162.3	183.1	176.4	159.0
(g)	Fruits Fresh & Dry	134.1	126.5	125.5	158.3	135.8
(h)	Vegetables	144.2	138.2	154.2	144.1	143.9
(i)	Sugar & Confectionery	110.5	105.6	101.4	124.7	107.2
(j)	Salt & Spices	123.3	136.1	111.7	120.6	124.0
(k)	Non-Alcoholic Beverages	130.6	138.2	137.2	104.2	111.9
(l)	Served & Packedged Processed Food	127.7	113.0	133.7	140.3	118.2
	Food & Beverages Group	129.7	130.5	129.6	130.0	127.8
II	Pan, Supari, Tobacco & Intoxicants	144.4	135.3	137.9	151.8	169.3
(a)	Clothing	128.1	155.2	117.1	117.5	117.4
(b)	Footwear	121.8	132.0	110.3	92.3	145.1
III	Clothing & Footwear	127.2	152.5	116.1	113.0	120.9
IV	Housing	121.0	121.0	116.9	106.0	164.2
V	Fuel & Light	178.2	122.7	176.7	169.7	215.8
VI	Miscellaneous					
(a)	Household Goods & Services	124.7	126.4	110.2	148.3	120.3
(b)	Health	125.0	109.5	106.6	141.4	114.9
(c)	Transport & Communication	135.8	131.5	107.2	147.9	119.3
(d)	Recreation & Entertainment	121.2	129.1	109.8	128.6	115.9
(e)	Education	118.0	109.4	118.0	114.8	121.3
(f)	Personal Care& Effects	119.6	120.2	120.8	121.4	117.6
	Miscellaneous Group	126.1	119.8	111.5	134.4	118.5
	General Index	129.9	126.1	123.7	127.0	138.6

Table No: 1.6.8						
Group/Sub-Group wise Consumer Price Index Numbers For Industrial Workers in 4 Metro Cities and All India						
Month : August, 2022						
Base Year : 2016=100						
Sl. NO.	Group/Sub-Group	All India	Delhi	Mumbai	Chennai	Kolkata
I	Food & Beverages					
(a)	Cereals & Products	119.6	147.0	113.1	88.3	121.3
(b)	Pulses & Products	93.3	102.4	100.3	79.2	96.2
(c)	Milk and Milk Products	124.2	126.1	115.9	117.1	129.5
(d)	Meat & Fish	143.9	137.2	134.3	177.8	138.9
(e)	Egg	118.5	109.7	109.2	107.7	121.1
(f)	Olis and Fats	175.2	159.9	181.7	172.5	152.2
(g)	Fruits Fresh & Dry	130.3	127.0	122.0	154.2	136.2
(h)	Vegetables	147.2	149.0	152.2	144.6	147.7
(i)	Sugar & Confectionery	111.0	106.1	101.3	124.8	108.9
(j)	Salt & Spices	125.3	137.6	114.2	123.8	124.3
(k)	Non-Alcoholic Beverages	130.6	134.8	137.4	104.4	111.7
(l)	Served & Packedged Processed Food	128.7	121.3	133.7	146.6	117.3
	Food & Beverages Group	130.2	133.7	128.8	130.9	129.6
II	Pan, Supari, Tobacco & Intoxicants	145.7	142.6	138.1	151.5	170.1
(a)	Clothing	129.1	161.2	117.1	117.5	120.3
(b)	Footwear	123.1	142.7	110.3	92.3	145.1
III	Clothing & Footwear	128.2	159.0	116.1	113.0	123.4
IV	Housing	121.0	121.0	116.9	106.0	164.2
V	Fuel & Light	177.4	124.3	177.4	170.5	224.1
VI	Miscellaneous					
(a)	Household Goods & Services	125.9	128.1	110.4	148.3	120.6
(b)	Health	125.5	109.5	106.6	141.4	114.7
(c)	Transport & Communication	136.1	131.5	107.1	147.9	119.7
(d)	Recreation & Entertainment	121.6	129.8	109.8	128.6	115.8
(e)	Education	118.1	110.0	118.0	114.8	121.3
(f)	Personal Care& Effects	120.6	128.4	120.8	121.4	118.5
	Miscellaneous Group	126.6	120.9	111.5	134.4	118.6
	General Index	130.2	128	123.4	127.4	140.1

Table No: 1.6.9						
Group/Sub-Group wise Consumer Price Index Numbers For Industrial Workers in 4 Metro Cities and All India						
Month : September, 2022						
Base Year : 2016=100						
Sl. NO.	Group/Sub-Group	All India	Delhi	Mumbai	Chennai	Kolkata
I	Food & Beverages					
(a)	Cereals & Products	121.9	147.0	114.8	97.1	122.0
(b)	Pulses & Products	94.0	102.5	103.4	81.5	97.1
(c)	Milk and Milk Products	125.9	130.2	118.0	117.0	129.4
(d)	Meat & Fish	144.2	136.6	138.9	174.0	137.3
(e)	Egg	119.9	115.7	109.9	111.3	121.1
(f)	Olis and Fats	171.1	162.6	171.6	167.6	157.3
(g)	Fruits Fresh & Dry	125.3	109.2	116.1	139.9	135.5
(h)	Vegetables	157.1	161.0	159.8	191.1	150.9
(i)	Sugar & Confectionery	111.5	106.6	101.6	146.5	108.9
(j)	Salt & Spices	126.9	137.7	117.9	125.1	125.4
(k)	Non-Alcoholic Beverages	131.4	134.8	140.8	104.4	111.9
(l)	Served & Packedged Processed Food	130.6	121.3	136.7	147	117.3
	Food & Beverages Group	131.9	135.5	130.6	134.9	130.3
II	Pan, Supari, Tobacco & Intoxicants	147.3	142.6	139.4	152.5	170.7
(a)	Clothing	130.3	161.5	119.2	117.5	120.3
(b)	Footwear	126.1	142.7	150.6	92.3	145.1
III	Clothing & Footwear	129.7	159.3	123.8	113.0	123.4
IV	Housing	121.0	121.0	116.9	117.5	164.2
V	Fuel & Light	177.8	124.3	177.4	92.3	225.7
VI	Miscellaneous					
(a)	Household Goods & Services	127.9	128.1	113.2	148.3	120.6
(b)	Health	127.1	109.5	106.8	141.4	114.7
(c)	Transport & Communication	136.3	131.5	107.7	147.9	119.7
(d)	Recreation & Entertainment	122.8	130.3	110.2	128.6	115.8
(e)	Education	118.6	110.0	118.0	114.8	121.3
(f)	Personal Care & Effects	122.5	128.4	125.7	121.4	118.5
	Miscellaneous Group	127.5	120.9	112.5	134.4	118.6
	General Index	131.3	128.7	124.7	129.0	140.6

Table No: 1.6.10						
Group/Sub-Group wise Consumer Price Index Numbers For Industrial Workers in 4 Metro Cities and All India						
Month : October, 2022						
Base Year : 2016=100						
Sl. NO.	Group/Sub-Group	All India	Delhi	Mumbai	Chennai	Kolkata
I	Food & Beverages					
(a)	Cereals & Products	123.8	147.1	116.3	103.4	123.5
(b)	Pulses & Products	94.3	102.4	106.4	81.7	97.2
(c)	Milk and Milk Products	127.1	130.4	120.9	117.0	130.5
(d)	Meat & Fish	146.3	137.5	139.9	173.7	138.4
(e)	Egg	120.2	115.2	111.9	114.9	123.8
(f)	Olis and Fats	169.8	163.0	168.1	167.1	152.4
(g)	Fruits Fresh & Dry	123.1	110.3	115.8	132.4	132.0
(h)	Vegetables	166.0	175.7	177.9	203.1	155.8
(i)	Sugar & Confectionery	111.5	106.9	102.8	146.7	109.0
(j)	Salt & Spices	128.1	137.7	118.1	124.9	126.5
(k)	Non-Alcoholic Beverages	132.7	131.6	141.6	104.4	111.3
(l)	Served & Packedged Processed Food	132.3	121.3	138.7	151.4	117.5
	Food & Beverages Group	133.9	137.5	133.8	137.1	131.2
II	Pan, Supari, Tobacco & Intoxicants	148.5	142.6	141.0	152.7	171.2
(a)	Clothing	132.6	161.7	121.7	117.5	120.6
(b)	Footwear	127.8	142.7	150.6	92.3	145.1
III	Clothing & Footwear	131.9	159.5	125.9	113.0	123.7
IV	Housing	121.0	121.0	116.9	106.0	164.2
V	Fuel & Light	177.8	124.3	177.4	170.5	225.7
VI	Miscellaneous					
(a)	Household Goods & Services	129.1	128.0	113.5	148.3	120.9
(b)	Health	128.0	109.5	106.8	141.4	115.1
(c)	Transport & Communication	137.0	131.5	108.0	147.9	119.7
(d)	Recreation & Entertainment	123.7	130.3	110.2	128.6	115.9
(e)	Education	119.4	115.3	118.0	114.8	121.3
(f)	Personal Care & Effects	123.5	128.5	126.6	121.4	119.1
	Miscellaneous Group	128.4	122.5	112.7	134.4	118.8
	General Index	132.5	129.9	126.1	129.9	141.0

Table No: 1.6.11						
Group/Sub-Group wise Consumer Price Index Numbers For Industrial Workers in 4 Metro Cities and All India						
Month : November, 2022						
Base Year : 2016=100						
Sl. NO.	Group/Sub-Group	All India	Delhi	Mumbai	Chennai	Kolkata
I	Food & Beverages					
(a)	Cereals & Products	125.1	149.4	117.5	98.1	124.2
(b)	Pulses & Products	94.9	103.1	106.5	81.9	97.0
(c)	Milk and Milk Products	128.2	130.2	121.2	117.0	130.5
(d)	Meat & Fish	147.1	138.4	138.6	179.6	136.7
(e)	Egg	126.2	146.1	116.4	131.3	121.9
(f)	Olis and Fats	171.4	163.8	169.5	170.6	154.1
(g)	Fruits Fresh & Dry	120.4	106.4	116.6	130.0	133.9
(h)	Vegetables	155.0	170.8	156.1	178.5	138.0
(i)	Sugar & Confectionery	111.5	107.1	102.5	145.3	108.7
(j)	Salt & Spices	130.0	137.7	118.7	126.2	126.6
(k)	Non-Alcoholic Beverages	133.1	137.5	141.7	104.3	111.3
(l)	Served & Packedged Processed Food	133.6	123.2	139.2	159.1	117.1
	Food & Beverages Group	133.3	137.8	131.8	136.5	128.5
II	Pan, Supari, Tobacco & Intoxicants	148.7	143.9	141.2	152.1	171.3
(a)	Clothing	133.0	159.4	121.7	118.1	120.6
(b)	Footwear	128.2	142.7	150.6	94.1	145.1
III	Clothing & Footwear	132.3	157.4	125.9	113.8	123.7
IV	Housing	121.0	159.4	116.9	106.0	164.2
V	Fuel & Light	177.8	142.7	177.4	170.5	223.2
VI	Miscellaneous					
(a)	Household Goods & Services	129.8	128.0	113.5	148.3	120.9
(b)	Health	129.2	110.7	106.8	141.4	115.1
(c)	Transport & Communication	137.5	131.2	108.0	147.9	119.7
(d)	Recreation & Entertainment	124.1	130.7	110.2	128.6	115.9
(e)	Education	120.0	116.6	118.0	114.8	121.3
(f)	Personal Care & Effects	124.2	127.6	126.6	121.4	119.1
	Miscellaneous Group	129.1	122.9	112.7	134.4	118.8
	General Index	132.5	130.0	125.3	129.7	139.7

Table No: 1.6.12						
Group/Sub-Group wise Consumer Price Index Numbers For Industrial Workers in 4 Metro Cities and All India						
Month : December, 2022						
Base Year : 2016=100						
Sl. NO.	Group/Sub-Group	All India	Delhi	Mumbai	Chennai	Kolkata
I	Food & Beverages					
(a)	Cereals & Products	126.9	150.2	118.1	107.8	122.5
(b)	Pulses & Products	95.5	102.4	106.4	81.7	97.6
(c)	Milk and Milk Products	128.9	130.3	121.3	117.1	130.5
(d)	Meat & Fish	147.0	137.3	138.6	179.9	135.1
(e)	Egg	132.1	146.1	124.7	137.8	124.7
(f)	Olis and Fats	171.1	164.5	167.8	169.2	153.3
(g)	Fruits Fresh & Dry	118.9	102.3	114.5	127.3	132.6
(h)	Vegetables	139.5	143.3	131.0	172.9	124.0
(i)	Sugar & Confectionery	111.5	107.3	102.5	144.4	109.1
(j)	Salt & Spices	131.9	138.9	118.4	127.0	128.0
(k)	Non-Alcoholic Beverages	133.4	137.5	141.2	104.1	111.3
(l)	Served & Packedged Processed Food	134.2	123.2	139.5	163.8	117.1
	Food & Beverages Group	132.0	134.0	128.9	138.2	125.9
II	Pan, Supari, Tobacco & Intoxicants	149.2	143.9	141.0	152.8	170.9
(a)	Clothing	133.5	159.4	121.7	118.1	120.6
(b)	Footwear	128.6	142.7	150.6	94.1	145.1
III	Clothing & Footwear	132.8	157.4	125.9	113.8	123.7
IV	Housing	121.0	121.0	116.9	106.0	164.2
V	Fuel & Light	177.8	124.3	177.4	170.5	219.7
VI	Miscellaneous					
(a)	Household Goods & Services	130.9	128.0	113.5	148.3	120.9
(b)	Health	131.4	113.0	108.4	141.8	116.4
(c)	Transport & Communication	137.9	131.2	108.0	147.9	119.7
(d)	Recreation & Entertainment	124.5	130.7	110.2	128.6	115.9
(e)	Education	121.0	116.3	118.0	114.8	121.3
(f)	Personal Care & Effects	124.8	127.6	126.6	121.4	119.1
	Miscellaneous Group	130.0	123.2	113.0	134.5	119.1
	General Index	132.3	128.7	124.3	130.4	138.4

Table No: 1.6.13						
Group/Sub-Group wise Consumer Price Index Numbers For Industrial Workers in 4 Metro Cities and All India						
Month : January, 2023						
Base Year : 2016=100						
Sl. NO.	Group/Sub-Group	All India	Delhi	Mumbai	Chennai	Kolkata
I	Food & Beverages					
(a)	Cereals & Products	127.7	151.3	119.0	114.6	111.3
(b)	Pulses & Products	95.6	102.2	105.5	81.9	98.1
(c)	Milk and Milk Products	129.3	131.8	121.8	117.1	130.5
(d)	Meat & Fish	146.4	133.5	137.1	178.2	135.9
(e)	Egg	133.9	144.1	128.3	136.6	127.7
(f)	Olis and Fats	169.8	163.1	165.1	166.4	152.6
(g)	Fruits Fresh & Dry	121.9	104.9	114.8	133.0	133.3
(h)	Vegetables	134.1	126.1	129.7	188.9	116.6
(i)	Sugar & Confectionery	111.4	106.6	102.6	147.5	109.2
(j)	Salt & Spices	132.5	138.5	119.2	127.9	129.0
(k)	Non-Alcoholic Beverages	133.2	136.7	139.1	103.9	111.3
(l)	Served & Packedged Processed Food	134.6	123.3	139.7	163.9	117.1
	Food & Beverages Group	131.8	131.9	128.7	141.0	123.1
II	Pan, Supari, Tobacco & Intoxicants	151.4	143.6	141.0	151.7	170.7
(a)	Clothing	133.5	161.1	121.7	118.1	120.6
(b)	Footwear	128.6	142.7	150.6	94.1	145.1
III	Clothing & Footwear	132.8	158.9	125.9	113.8	123.7
IV	Housing	123.4	161.1	119.0	106.2	168.1
V	Fuel & Light	177.9	142.7	177.4	170.5	219.7
VI	Miscellaneous					
(a)	Household Goods & Services	131.3	128.1	113.5	155.2	120.9
(b)	Health	131.7	113.0	108.4	144.6	116.4
(c)	Transport & Communication	137.9	131.5	108.0	147.9	119.7
(d)	Recreation & Entertainment	124.7	130.4	110.2	128.6	115.9
(e)	Education	121.0	116.3	118.0	114.8	121.3
(f)	Personal Care & Effects	125.4	127.6	126.6	121.4	119.1
	Miscellaneous Group	130.2	123.3	113.0	135.8	119.1
	General Index	132.8	128.2	124.8	131.9	137.8

Table No: 1.6.14						
Group/Sub-Group wise Consumer Price Index Numbers For Industrial Workers in 4 Metro Cities and All India						
Month : February, 2023						
Base Year : 2016=100						
Sl. NO.	Group/Sub-Group	All India	Delhi	Mumbai	Chennai	Kolkata
I	Food & Beverages					
(a)	Cereals & Products	128.7	151.5	120.1	112.5	112.3
(b)	Pulses & Products	95.4	102.5	104.8	81.3	98.2
(c)	Milk and Milk Products	129.7	134.4	122.6	117.1	130.4
(d)	Meat & Fish	144.8	127.4	134.4	175.9	134.9
(e)	Egg	130.2	137.8	118.6	122.9	122.9
(f)	Olis and Fats	167.4	160.9	161.9	164.6	151.2
(g)	Fruits Fresh & Dry	125.2	109.8	119.1	139.1	132.4
(h)	Vegetables	130.3	120.3	129.4	173.7	113.7
(i)	Sugar & Confectionery	111.2	105.7	102.7	145.9	109.3
(j)	Salt & Spices	133.0	133.8	119.9	127.5	129.0
(k)	Non-Alcoholic Beverages	133.2	137.7	139.7	104.1	111.4
(l)	Served & Packedged Processed Food	135.1	123.3	140.3	163.9	117.1
	Food & Beverages Group	131.5	131.2	129.0	139.5	122.4
II	Pan, Supari, Tobacco & Intoxicants	152.2	143.6	140.2	152.3	170.6
(a)	Clothing	133.6	161.3	121.7	118.1	120.6
(b)	Footwear	129.0	142.7	150.6	94.1	145.1
III	Clothing & Footwear	133.0	159.1	125.9	113.8	123.7
IV	Housing	123.4	121.8	119.0	106.2	168.1
V	Fuel & Light	177.8	124.3	177.4	170.5	218.9
VI	Miscellaneous					
(a)	Household Goods & Services	132.0	128.6	113.5	155.2	120.9
(b)	Health	132.2	115.4	108.4	144.6	116.4
(c)	Transport & Communication	138.1	134.1	108.0	147.9	119.7
(d)	Recreation & Entertainment	125.1	130.7	110.2	128.6	115.9
(e)	Education	121.0	116.3	118.0	114.8	121.3
(f)	Personal Care& Effects	125.5	127.9	126.6	121.4	119.1
	Miscellaneous Group	130.4	124.5	113.0	135.8	119.1
	General Index	132.7	128.3	124.9	131.3	137.5

Table No: 1.6.15						
Group/Sub-Group wise Consumer Price Index Numbers For Industrial Workers in 4 Metro Cities and All India						
Month : March, 2023						
Base Year : 2016=100						
Sl. NO.	Group/Sub-Group	All India	Delhi	Mumbai	Chennai	Kolkata
I	Food & Beverages					
(a)	Cereals & Products	128.1	148.6	120.7	109.1	109.7
(b)	Pulses & Products	95.7	101.5	104.8	80.3	98.8
(c)	Milk and Milk Products	130.7	134.3	125.0	117.1	136.6
(d)	Meat & Fish	144.3	131.0	131.1	173.7	139.1
(e)	Egg	124.1	104.4	111.4	115.3	113.4
(f)	Olis and Fats	163.3	157.5	159.6	160.8	127.9
(g)	Fruits Fresh & Dry	130.4	131.9	121.6	141.0	141.1
(h)	Vegetables	129.9	120.1	136.5	149.7	128.1
(i)	Sugar & Confectionery	111.2	105.1	102.6	146.5	109.9
(j)	Salt & Spices	134.2	136.3	120.4	126.7	137.1
(k)	Non-Alcoholic Beverages	133.8	137.7	140.1	104.2	115.6
(l)	Served & Packedged Processed Food	135.9	123.2	140.6	163.9	117.3
	Food & Beverages Group	131.7	131.6	130.0	113.0	124.1
II	Pan, Supari, Tobacco & Intoxicants	153.8	143.7	140.2	151.9	180.7
(a)	Clothing	134.0	161.9	121.7	118.1	122.3
(b)	Footwear	129.7	142.7	150.6	94.1	146.5
III	Clothing & Footwear	133.3	159.6	125.9	113.8	125.3
IV	Housing	123.4	121.8	119.0	106.2	168.1
V	Fuel & Light	182.2	130.2	181.9	175.6	220.1
VI	Miscellaneous					
(a)	Household Goods & Services	133.3	128.6	113.5	157.0	121.5
(b)	Health	133.7	115.4	108.4	144.6	110.7
(c)	Transport & Communication	138.4	134.1	108.0	148.3	120.5
(d)	Recreation & Entertainment	125.6	130.7	110.2	128.6	119.8
(e)	Education	121.1	116.3	118.0	114.8	121.4
(f)	Personal Care& Effects	126.9	127.9	126.6	129.7	121.3
	Miscellaneous Group	131.1	124.5	113.0	136.6	118.4
	General Index	133.3	128.9	125.5	130.6	138.3

Table No:1.7																
Group Wise Consumer Price Index Number for Industrial Workers in 4 Metro Cities and All India																
Average Annual Index for the Year 2021 & 2022 (Calender Year wise)																
(Base Year:2016=100)																
S.No.	Group	All India			Delhi			Mumbai			Chennai			Kolkata		
		2021	2022	% Variation	2021	2022	% Variation	2021	2022	% Variation	2021	2022	% Variation	2021	2022	% Variation
I.	Food & Beverages	121.8	129.3	6.2	117.9	130.7	10.9	121.7	128.2	5.3	125.3	131.9	5.3	119.4	127.4	6.7
II.	Pan, Supari, Tobacco & Intoxicants	138.4	145.4	5.1	129.7	138.7	6.9	130.8	137.9	5.4	147.2	150.9	2.5	156.5	170.7	9.1
III.	Clothing & Footwear	120.2	127.6	6.2	130.4	151.7	16.3	109.9	118.6	7.9	113.0	112.9	-0.1	121.0	123.4	2.0
IV.	Housing	116.0	120.0	3.4	118.9	120.4	1.3	110.7	116.2	5.0	105.6	105.9	0.3	156.8	162.1	3.4
V.	Fuel & Light	150.8	171.0	13.4	97.8	117.1	19.7	150.6	169.5	12.5	149.5	165.2	10.5	158.8	207.3	30.5
VI.	Miscellaneous	120.0	126.3	5.3	113.5	120.1	5.8	108.6	111.5	2.7	128.6	133.4	3.7	107.2	118.1	10.2
	GENERAL INDEX	122.0	129.2	5.9	116.4	125.7	8.0	116.6	122.7	5.2	122.5	127.3	3.9	126.0	137.4	9.0

Table 1.8																
Group Wise Consumer Price Index Number for Industrial Workers in 4 Metro Cities and All India																
Average Index for the Year 2021-22 & 2022-23 (Financial year wise)																
(Base Year:2016=100)																
S.No.	Group	All India			Delhi			Mumbai			Chennai			Kolkata		
		2021-22	2022-23	% Variation	2021-22	2022-23	% Variation	2021-22	2022-23	% Variation	2021-22	2022-23	% Variation	2021-22	2022-23	% Variation
I	Food & Beverages	123.5	131.1	6.2	120.6	132.7	10.0	123.3	129.6	5.1	126.5	134.7	6.5	120.8	127.4	5.5
II	Pan, Supari, Tobacco & Intoxicants	140.2	147.9	5.5	131.6	140.6	6.8	133.1	139.2	4.6	147.6	151.9	2.9	163.7	171.3	4.6
III.	Clothing & Footwear	121.4	130.0	7.1	134.4	156.5	16.4	111.8	120.9	8.1	112.3	113.3	0.9	122.2	123.3	0.9
IV.	Housing	116.9	121.1	3.6	119.2	120.9	1.4	112.1	116.9	4.3	105.6	106	0.4	157.8	164.1	4.0
V	Fuel & Light	155.0	176.0	13.5	102.1	122.1	19.6	153.9	174.9	13.6	152.8	169.2	10.7	167.0	217.6	30.3
VI	Miscellaneous	121.5	128.1	5.4	114.9	121.9	6.1	109.4	112.2	2.6	129.7	134.8	3.9	109.4	118.6	8.4
	GENERAL INDEX	123.6	131.1	6.1	118.3	127.6	7.9	118.0	124.1	5.2	123.5	129	4.5	128.2	138.7	8.2

Table No:2.1.1
STATE/CENTRE WISE CONSUMER PRICE INDEX NUMBER FOR INDUSTRIAL WORKERS (GENERAL INDEX) 2022 AS PER NEW BASE YEAR (2016=100)

State/Centre	2022												Average for Calendar year
	Jan	Feb	Mar	Apr	May	Jun	Jul	Aug	Sep	Oct	Nov	Dec	
ANDHRA PRADESH													
Guntur	127.1	126.5	127.4	129.4	132.3	133.1	131.8	133.4	134.7	137.9	139.6	139.0	132.7
Nellore	123.3	123.5	123.7	124.0	125.5	125.0	125.3	126.3	129.1	132.1	133.0	132.7	127.0
Visakhapatnam	136.7	136.8	137.2	138.9	140.6	140.7	142.4	142.2	143.4	145.8	145.7	146.2	141.4
ASSAM													
Biswanath-Chariali	130.5	131.1	133.2	134.5	135.5	135.8	137.1	137.0	137.2	136.6	137.1	136.3	135.2
Doom-Dooma Tinsukia	134.9	135.1	137.3	142.7	145.4	147.3	147.7	148.7	148.7	147.4	147.5	147.3	144.2
Guwahati	137.2	138.9	140.4	141.9	142.6	143.5	145.2	145.8	146.0	146.7	146.7	145.7	143.4
Labac-Silchar	119.8	119.7	125.5	126.6	128.7	129.8	131.0	132.5	133.7	135.1	135.4	133.6	129.3
Numaligarh- Golaghat	118.6	120.3	121.6	126.9	128.6	129.0	131.8	134.4	137.0	137.5	137.0	137.2	130.0
Sibsagar	126.0	126.5	129.4	131.3	133.7	133.9	134.1	135.1	135.5	135.9	136.3	136.7	132.9
BIHAR													
Munger-Jamalpur	121.4	122.0	123.2	123.7	124.9	126.0	127.6	128.6	131.8	134.1	133.8	132.4	127.5
Patna	124.0	123.4	124.1	125.3	125.2	125.2	127.2	129.2	128.8	130.8	133.3	132.5	127.4
CHANDIGARH(UT)													
Chandigarh	126.8	127.0	127.3	129.0	132.5	133.2	135.0	137.2	137.5	137.6	138.0	137.4	133.2
CHHATTISGARH													
Bhilai	118.1	118.2	120.4	122.3	124.5	124.4	124.2	123.6	124.1	124.3	123.3	122.4	122.5
Korba	128.4	129.4	130.1	132.2	132.0	131.6	133.2	132.7	132.6	133.1	137.5	136.7	132.5
Raipur	121.2	121.1	122.8	124.9	127.7	128.7	128.9	128.8	129.2	130.9	128.9	128.0	126.8
DADRA & NAGAR HAVELI(UT)													
Dadra & Nagar Haveli	120.7	120.7	121.6	123.6	124.0	124.8	125.8	124.0	124.7	125.4	124.3	123.3	123.6
DELHI (NCT)													
Delhi	120.0	120.2	121.8	125.5	124.3	124.8	126.1	128.0	128.7	129.9	130.0	128.7	125.7
GOA													
Goa	121.6	122.2	122.9	125.1	125.5	125.6	127.1	126.4	127.0	126.9	126.4	126.8	125.3
GUJARAT													
Ahmedabad	120.3	119.8	120.5	121.8	122.4	122.4	124.4	125.7	125.1	128.5	126.8	126.4	123.7
Bhavnagar	121.1	120.5	120.9	123.5	126.8	126.7	126.8	126.7	131.2	131.3	131.0	129.2	126.3
Rajkot	124.4	124.4	128.0	129.9	131.2	130.6	130.9	131.1	134.2	133.3	132.8	132.7	130.3
Surat	121.4	121.1	121.9	122.5	123.3	123.8	125.3	125.0	125.3	126.4	124.7	124.6	123.8
Vadodara	120.6	120.4	122.2	124.2	124.0	123.6	124.8	124.7	125.4	127.4	126.3	125.4	124.1
HARYANA													
Faridabad	122.3	122.2	123.1	128.6	127.8	127.8	128.4	128.7	129.0	130.8	130.1	133.4	127.7
Gurugram	123.4	122.8	123.6	131.0	131.9	131.4	133.3	133.1	134.1	136.1	135.1	133.6	130.8
Yamunanagar	123.6	123.6	127.2	128.2	126.7	127.3	129.7	130.3	131.8	133.6	134.2	134.5	129.2
HIMACHAL PRADESH													
Himachal Pradesh	126.0	126.4	126.9	129.1	131.3	131.9	129.7	131.2	131.2	131.7	131.3	130.2	129.7

Table No:2.1.1

**STATE/CENTRE WISE CONSUMER PRICE INDEX NUMBER FOR
INDUSTRIAL WORKERS (GENERAL INDEX) 2022 AS PER NEW BASE YEAR
(2016=100)**

State/Centre	2022												Average for Calender year
	Jan	Feb	Mar	Apr	May	Jun	Jul	Aug	Sep	Oct	Nov	Dec	
JAMMU & KASHMIR													
Jammu & Kashmir	132.3	132.8	132.0	133.5	133.5	134.1	135.6	136.3	136.8	137.3	136.5	136.0	134.7
JHARKHAND													
Bokaro	122.7	123.5	125.5	126.8	127.1	128.2	127.8	126.7	126.2	129.1	128.1	126.9	126.6
Dhanbad-Jharia	129.6	130.8	130.7	131.5	131.1	132.7	133.8	133.3	136.5	137.3	136.6	135.9	133.3
Jamshedpur	136.1	135.8	137.8	138.6	139.5	139.7	140.1	136.4	139.8	140.8	142.5	142.1	139.1
Ramgarh	127.9	128.3	129.6	130.3	132.1	130.8	132.4	130.5	131.8	134.2	135.2	135.6	131.6
KARNATAKA													
Belgaum	126.8	125.5	126.3	127.9	129.9	129.3	129.1	129.8	131.7	134.8	135.7	135.1	130.2
Bengaluru	119.4	119.5	119.1	121.1	123.2	123.1	124.2	124.0	125.0	125.0	124.9	125.0	122.8
Chikmagalur	117.4	116.6	117.3	117.9	120.3	119.1	120.2	121.9	123.6	125.5	125.8	125.9	121.0
Davanagere	127.0	126.8	127.6	129.8	131.9	130.8	131.5	132.4	134.3	136.5	137.3	136.7	131.9
Hubli-Dharwad	124.1	123.8	124.5	125.9	127.4	126.5	125.9	126.5	126.7	127.7	128.0	127.5	126.2
Mercara-Kodagu	122.2	121.5	121.7	123.1	125.3	125.8	124.9	124.8	127.5	129.2	129.6	130.5	125.5
Mysore	123.8	123.9	124.7	127.1	127.5	127.0	127.7	127.8	130.9	132.0	132.5	132.5	128.1
KERALA													
Ernakulam/Alwaye	128.9	128.3	129.3	129.7	132.4	132.4	133.1	132.7	133.1	134.1	134.3	134.1	131.9
Idukki	129.6	128.7	129.8	131.3	133.0	134.0	132.6	132.8	133.1	134.8	134.8	136.5	132.6
Kollam	126.3	126.8	126.3	126.8	129.4	130.1	130.4	129.8	131.3	133.0	133.1	133.5	129.7
MADHYA PRADESH													
Bhopal	121.1	122.8	123.1	123.8	124.4	123.8	124.8	126.0	126.9	127.2	127.6	126.8	124.9
Chhindwara	123.6	124.1	125.5	127.7	128.7	127.3	128.6	129.2	128.6	129.1	132.1	130.4	127.9
Indore	116.5	117.4	121.4	123.5	124.4	123.8	123.4	123.9	126.1	126.7	125.4	124.4	123.1
Jabalpur	126.9	127.3	128.7	133.1	132.7	132.8	134.4	134.4	134.1	132.9	132.9	132.6	131.9
MAHARASHTRA													
Mumbai	119.2	118.8	120.4	120.7	122.1	123.4	123.7	123.4	124.7	126.1	125.3	124.3	122.7
Nagpur	126.1	126.0	126.2	128.2	128.2	128.9	130.0	129.9	129.8	129.6	129.2	132.2	128.7
Nasik	120.8	121.6	122.3	122.6	122.9	123.8	124.0	123.6	123.6	123.6	126.4	124.5	123.3
Pune	120.8	121.0	121.5	122.4	123.2	123.3	123.2	123.0	122.8	124.2	122.3	122.4	122.5
Solapur	131.1	130.8	131.3	133.2	133.3	132.6	134.1	138.0	138.1	139.4	137.2	137.9	134.8
Thane	119.1	122.0	122.2	123.1	123.6	124.3	124.8	124.7	124.7	125.5	125.3	124.9	123.7
MEGHALAYA													
Shillong	135.2	135.1	136.4	136.2	139.1	139.5	142.4	141.1	140.5	141.8	142.4	143.5	139.4
ODISHA													
Angul-Talchar	130.8	131.6	137.0	141.8	142.2	142.1	142.1	144.1	144.4	143.4	142.7	143.4	140.5
Cuttack	135.0	135.9	137.3	138.8	139.5	139.1	140.0	140.2	141.0	141.7	140.6	139.4	139.0
Keonjhar	134.5	134.2	136.2	138.1	137.9	137.3	139.2	140.6	140.6	141.5	142.3	140.6	138.6
PUDUCHERRY(UT)													
Puducherry	132.6	130.7	131.9	133.3	134.9	137.5	135.7	134.4	134.9	137.0	137.2	138.1	134.9
PUNJAB													
Amritsar	120.7	120.9	121.6	123.9	123.7	125.9	127.6	127.7	127.3	126.9	125.2	126.6	124.8
Jalandhar	121.2	121.6	121.4	127.9	132.1	132.5	135.7	133.8	135.6	135.5	136.7	137.5	131.0
Ludhiana	125.2	124.4	124.3	126.7	128.0	128.5	130.5	132.4	133.8	137.4	139.2	138.6	130.8
Sangrur	120.6	120.5	126.8	129.2	130.4	128.0	128.2	128.7	129.1	131.6	132.5	132.8	128.2
RAJASTHAN													
Alwar	124.8	124.9	124.6	124.4	126.1	125.8	128.0	126.7	126.7	128.5	127.8	127.1	126.3
Bhilwara	120.3	122.4	123.7	127.1	127.3	126.6	127.9	129.2	129.6	129.7	129.8	129.8	127.0
Jaipur	116.5	117.2	119.4	121.1	124.4	124.4	125.0	125.3	125.5	126.2	126.3	126.0	123.1
TAMIL NADU													
Chennai	126.4	123.7	123.2	124.8	128.4	127.8	127.0	127.4	129.0	129.9	129.7	130.4	127.3
Coimbatore	123.1	120.6	120.9	123.0	128.2	127.3	127.0	127.4	128.0	128.4	127.6	127.0	125.7

Table No:2.1.1

**STATE/CENTRE WISE CONSUMER PRICE INDEX NUMBER FOR
INDUSTRIAL WORKERS (GENERAL INDEX) 2022 AS PER NEW BASE YEAR
(2016=100)**

State/Centre	2022												Average for Calender year
	Jan	Feb	Mar	Apr	May	Jun	Jul	Aug	Sep	Oct	Nov	Dec	
Coonoor	125.7	124.0	123.9	125.2	128.6	127.1	126.8	126.6	129.0	131.8	129.6	129.7	127.3
Madurai	128.5	126.4	127.2	129.1	131.0	131.2	131.6	132.9	135.1	136.4	137.4	138.2	132.1
Salem	127.1	122.4	121.3	124.0	128.8	129.5	125.4	126.3	128.1	130.3	130.8	131.8	127.2
Tirunelveli	131.3	127.6	129.3	131.3	134.1	135.4	135.1	136.0	137.0	138.2	138.5	140.9	134.6
Virudhu Nagar	127.2	124.7	124.2	126.2	128.3	129.8	127.8	128.2	129.3	129.5	131.0	130.8	128.1
TELANGANA													
Hyderabad	123.3	122.9	123.6	124.6	126.6	127.8	130.1	130.4	131.9	133.4	133.0	132.5	128.3
Mancheriyal	134.8	135.1	134.2	136.4	137.1	137.0	138.8	139.4	141.2	143.0	144.8	144.3	138.8
Warangal	126.3	123.7	124.2	128.5	131.4	132.9	133.3	132.3	134.3	136.2	135.4	135.3	131.2
TRIPURA													
Tripura	126.3	124.7	126.5	128.3	129.8	131.8	132.5	132.1	131.6	133.1	133.9	133.3	130.3
UTTAR PRADESH													
Agra	124.8	125.4	129.3	130.6	131.3	131.4	131.4	134.6	136.3	137.3	137.1	137.6	132.3
Ghaziabad/G.B. Nagar	126.2	127.6	127.8	128.4	129.4	130.9	132.3	132.4	133.2	135.7	136.1	135.1	131.3
Kanpur	126.7	127.1	128.8	131.0	130.8	131.1	132.1	133.4	134.8	135.2	135.6	134.8	131.8
Lucknow	127.2	128.7	133.6	135.5	135.7	136.7	138.7	138.5	139.2	140.8	140.1	138.2	136.1
Varanasi	126.3	126.7	127.5	128.1	129.2	129.2	130.9	132.5	135.8	135.2	135.2	134.1	130.9
UTTARAKHAND													
Udham Singh Nagar	131.8	131.6	135.2	137.0	137.6	137.5	141.3	140.9	142.3	142.3	141.9	141.5	138.4
WEST BENGAL													
Darjeeling	116.5	116.4	117.2	116.4	118.3	118.5	119.7	121.9	123.7	125.2	125.5	125.1	120.4
Durgapur	129.9	130.1	130.5	131.9	131.9	132.0	132.0	133.8	134.5	137.4	137.1	135.6	133.1
Haldia	118.0	118.1	118.6	118.7	120.3	120.6	121.6	121.7	123.8	122.5	122.4	122.1	120.7
Howrah	125.2	126.9	127.8	128.7	130.1	129.9	130.8	131.5	134.0	135.5	135.2	135.0	130.9
Jalpaiguri	122.5	122.4	122.9	123.6	126.7	128.4	131.7	132.9	133.8	134.5	134.3	132.9	128.9
Kolkata	131.2	132.4	134.0	137.3	137.4	137.8	138.6	140.1	140.6	141.0	139.7	138.4	137.4
Raniganj	136.9	137.2	137.9	139.3	139.5	139.0	139.6	139.8	142.5	142.4	141.7	142.0	139.8

Table No:2.1.2
STATE/CENTRE WISE CONSUMER PRICE INDEX NUMBER FOR INDUSTRIAL WORKERS (GENERAL INDEX)
2022-23 AS PER NEW BASE YEAR (2016=100)

Centre	2022									2023			Average for Financial year
	Apr	May	Jun	Jul	Aug	Sep	Oct	Nov	Dec	Jan	Feb	Mar	
ANDHRA PRADESH													
Guntur	129.4	132.3	133.1	131.8	133.4	134.7	137.9	139.6	139.0	140.4	139.9	140.8	136.0
Nellore	124.0	125.5	125.0	125.3	126.3	129.1	132.1	133.0	132.7	132.9	132.4	132.5	129.2
Visakhapatnam	138.9	140.6	140.7	142.4	142.2	143.4	145.8	145.7	146.2	147.3	147.0	147.3	144.0
ASSAM													
Biswanath-	134.5	135.5	135.8	137.1	137.0	137.2	136.6	137.1	136.3	135.0	134.1	134.5	135.9
Doom-	142.7	145.4	147.3	147.7	148.7	148.7	147.4	147.5	147.3	146.7	146.4	146.6	146.9
Guwahati	141.9	142.6	143.5	145.2	145.8	146.0	146.7	146.7	145.7	146.3	145.9	145.3	145.1
Labac-Silchar	126.6	128.7	129.8	131.0	132.5	133.7	135.1	135.4	133.6	132.1	131.4	131.4	131.8
Numaligarh- Golaghat	126.9	128.6	129.0	131.8	134.4	137.0	137.5	137.0	137.2	137.2	137.7	137.1	134.3
Sibsagar	131.3	133.7	133.9	134.1	135.1	135.5	135.9	136.3	136.7	136.5	136.7	138.3	135.3
BIHAR													
Munger-	123.7	124.9	126.0	127.6	128.6	131.8	134.1	133.8	132.4	132.5	133.6	134.3	130.3
Patna	125.3	125.2	125.2	127.2	129.2	128.8	130.8	133.3	132.5	132.5	132.9	132.9	129.7
CHANDIGARH(UT)													
Chandigarh	129.0	132.5	133.2	135.0	137.2	137.5	137.6	138.0	137.4	139.3	140.5	141.4	136.6
CHHATTISGARH													
Bhilai	122.3	124.5	124.4	124.2	123.6	124.1	124.3	123.3	122.4	122.3	122.7	124.1	123.5
Korba	132.2	132.0	131.6	133.2	132.7	132.6	133.1	137.5	136.7	137.0	137.6	138.5	134.6
Raipur	124.9	127.7	128.7	128.9	128.8	129.2	130.9	128.9	128.0	128.2	128.1	128.7	128.4
DADRA &													
Dadra	123.6	124.0	124.8	125.8	124.0	124.7	125.4	124.3	123.3	124.8	124.5	125.3	124.5
DELHI (NCT)													
Delhi	125.5	124.3	124.8	126.1	128.0	128.7	129.9	130.0	128.7	128.2	128.3	128.9	127.6
GOA													
Goa	125.1	125.5	125.6	127.1	126.4	127.0	126.9	126.4	126.8	128.0	128.1	128.5	126.8
GUJARAT													
Ahmedabad	121.8	122.4	122.4	124.4	125.7	125.1	128.5	126.8	126.4	126.2	126.1	129.4	125.4
Bhavnagar	123.5	126.8	126.7	126.8	126.7	131.2	131.3	131.0	129.2	128.9	129.3	130.3	128.5
Rajkot	129.9	131.2	130.6	130.9	131.1	134.2	133.3	132.8	132.7	133.2	133.2	134.0	132.3
Surat	122.5	123.3	123.8	125.3	125.0	125.3	126.4	124.7	124.6	125.8	126.8	127.2	125.1
Vadodara	124.2	124.0	123.6	124.8	124.7	125.4	127.4	126.3	125.4	125.7	126.3	128.4	125.5
HARYANA													
Faridabad	128.6	127.8	127.8	128.4	128.7	129.0	130.8	130.1	133.4	133.7	134.0	134.1	130.5
Gurugram	131.0	131.9	131.4	133.3	133.1	134.1	136.1	135.1	133.6	133.9	134.8	137.9	133.9
Yamunanagar	128.2	126.7	127.3	129.7	130.3	131.8	133.6	134.2	134.5	134.2	134.3	135.5	131.7
HIMACHAL													
Himachal	129.1	131.3	131.9	129.7	131.2	131.2	131.7	131.3	130.2	130.2	130.1	131.5	130.8
JAMMU &													
Jammu &	133.5	133.5	134.1	135.6	136.3	136.8	137.3	136.5	136.0	136.4	136.2	137.5	135.8
JHARKHAND													
Bokaro	126.8	127.1	128.2	127.8	126.7	126.2	129.1	128.1	126.9	126.4	127.6	128.1	127.4

Table No:2.1.2
STATE/CENTRE WISE CONSUMER PRICE INDEX NUMBER FOR INDUSTRIAL WORKERS (GENERAL INDEX)
2022-23 AS PER NEW BASE YEAR (2016=100)

Centre	2022									2023			Average for Financial year
	Apr	May	Jun	Jul	Aug	Sep	Oct	Nov	Dec	Jan	Feb	Mar	
Dhanbad-Jharia	131.5	131.1	132.7	133.8	133.3	136.5	137.3	136.6	135.9	136.3	137.5	137.3	135.0
Jamshedpur	138.6	139.5	139.7	140.1	136.4	139.8	140.8	142.5	142.1	142.9	141.5	144.7	140.7
Ramgarh	130.3	132.1	130.8	132.4	130.5	131.8	134.2	135.2	135.6	135.1	134.9	134.5	133.1
KARNATAKA													
Belgaum	127.9	129.9	129.3	129.1	129.8	131.7	134.8	135.7	135.1	135.8	135.7	136.0	132.6
Bengaluru	121.1	123.2	123.1	124.2	124.0	125.0	125.0	124.9	125.0	125.5	125.7	125.8	124.4
Chikmagalur	117.9	120.3	119.1	120.2	121.9	123.6	125.5	125.8	125.9	126.2	126.3	127.3	123.3
Davanagere	129.8	131.9	130.8	131.5	132.4	134.3	136.5	137.3	136.7	137.6	138.5	139.9	134.8
Hubli-Dharwad	125.9	127.4	126.5	125.9	126.5	126.7	127.7	128.0	127.5	128.3	128.4	129.8	127.4
Mercara-Kodagu	123.1	125.3	125.8	124.9	124.8	127.5	129.2	129.6	130.5	130.6	130.2	129.6	127.6
Mysore	127.1	127.5	127.0	127.7	127.8	130.9	132.0	132.5	132.5	132.7	132.6	133.1	130.3
KERALA													
Ernakulam/Alwaye	129.7	132.4	132.4	133.1	132.7	133.1	134.1	134.3	134.1	134.2	133.9	135.1	133.3
Idukki	131.3	133.0	134.0	132.6	132.8	133.1	134.8	134.8	136.5	136.1	134.7	135.0	134.1
Kollam	126.8	129.4	130.1	130.4	129.8	131.3	133.0	133.1	133.5	133.2	132.3	133.8	131.4
MADHYA PRADESH													
Bhopal	123.8	124.4	123.8	124.8	126.0	126.9	127.2	127.6	126.8	127.8	128.2	129.3	126.4
Chhindwara	127.7	128.7	127.3	128.6	129.2	128.6	129.1	132.1	130.4	130.5	130.3	130.4	129.4
Indore	123.5	124.4	123.8	123.4	123.9	126.1	126.7	125.4	124.4	125.3	125.4	126.9	124.9
Jabalpur	133.1	132.7	132.8	134.4	134.4	134.1	132.9	132.9	132.6	133.1	133.2	133.6	133.3
MAHARASHTRA													
Mumbai	120.7	122.1	123.4	123.7	123.4	124.7	126.1	125.3	124.3	124.8	124.9	125.5	124.1
Nagpur	128.2	128.2	128.9	130.0	129.9	129.8	129.6	129.2	132.2	132.9	132.7	133.1	130.4
Nasik	122.6	122.9	123.8	124.0	123.6	123.6	123.6	126.4	124.5	124.4	124.5	124.6	124.0
Pune	122.4	123.2	123.3	123.2	123.0	122.8	124.2	122.3	122.4	123.4	123.4	124.3	123.2
Solapur	133.2	133.3	132.6	134.1	138.0	138.1	139.4	137.2	137.9	138.9	138.5	138.8	136.7
Thane	123.1	123.6	124.3	124.8	124.7	124.7	125.5	125.3	124.9	125.1	124.8	126.0	124.7
MEGHALAYA													
Shillong	136.2	139.1	139.5	142.4	141.1	140.5	141.8	142.4	143.5	144.8	144.8	145.3	141.8
ODISHA													
Angul-Talchar	141.8	142.2	142.1	142.1	144.1	144.4	143.4	142.7	143.4	142.1	142.6	144.7	143.0
Cuttack	138.8	139.5	139.1	140.0	140.2	141.0	141.7	140.6	139.4	140.7	141.5	141.6	140.3
Keonjhar	138.1	137.9	137.3	139.2	140.6	140.6	141.5	142.3	140.6	141.3	140.9	142.3	140.2
PUDUCHERRY(UT)													
Puducherry	133.3	134.9	137.5	135.7	134.4	134.9	137.0	137.2	138.1	140.3	138.5	139.1	136.7
PUNJAB													
Amritsar	123.9	123.7	125.9	127.6	127.7	127.3	126.9	125.2	126.6	126.6	129.7	129.0	126.7
Jalandhar	127.9	132.1	132.5	135.7	133.8	135.6	135.5	136.7	137.5	139.5	139.1	139.7	135.5
Ludhiana	126.7	128.0	128.5	130.5	132.4	133.8	137.4	139.2	138.6	137.6	137.8	140.1	134.2
Sangrur	129.2	130.4	128.0	128.2	128.7	129.1	131.6	132.5	132.8	132.7	132.6	132.4	130.7

Table No:2.1.2
STATE/CENTRE WISE CONSUMER PRICE INDEX NUMBER FOR INDUSTRIAL WORKERS (GENERAL INDEX)
2022-23 AS PER NEW BASE YEAR (2016=100)

Centre	2022									2023			Average for Financial year
	Apr	May	Jun	Jul	Aug	Sep	Oct	Nov	Dec	Jan	Feb	Mar	
RAJASTHAN													
Alwar	124.4	126.1	125.8	128.0	126.7	126.7	128.5	127.8	127.1	127.1	126.5	127.1	126.8
Bhilwara	127.1	127.3	126.6	127.9	129.2	129.6	129.7	129.8	129.8	129.9	130.2	131.7	129.1
Jaipur	121.1	124.4	124.4	125.0	125.3	125.5	126.2	126.3	126.0	126.7	126.8	127.6	125.4
TAMIL NADU													
Chennai	124.8	128.4	127.8	127.0	127.4	129.0	129.9	129.7	130.4	131.9	131.3	130.6	129.0
Coimbatore	123.0	128.2	127.3	127.0	127.4	128.0	128.4	127.6	127.0	130.0	129.1	129.2	127.7
Coonoor	125.2	128.6	127.1	126.8	126.6	129.0	131.8	129.6	129.7	131.2	131.1	132.6	129.1
Madurai	129.1	131.0	131.2	131.6	132.9	135.1	136.4	137.4	138.2	138.5	137.4	136.5	134.6
Salem	124.0	128.8	129.5	125.4	126.3	128.1	130.3	130.8	131.8	132.4	131.1	129.7	129.0
Tirunelveli	131.3	134.1	135.4	135.1	136.0	137.0	138.2	138.5	140.9	141.6	141.0	139.9	137.4
Virudhu Nagar	126.2	128.3	129.8	127.8	128.2	129.3	129.5	131.0	130.8	132.9	134.0	135.0	130.2
TELANGANA													
Hyderabad	124.6	126.6	127.8	130.1	130.4	131.9	133.4	133.0	132.5	132.6	133.1	133.1	130.8
Mancheriyal	136.4	137.1	137.0	138.8	139.4	141.2	143.0	144.8	144.3	144.5	145.0	145.6	141.4
Warangal	128.5	131.4	132.9	133.3	132.3	134.3	136.2	135.4	135.3	135.6	136.1	137.2	134.0
TRIPURA													
Tripura	128.3	129.8	131.8	132.5	132.1	131.6	133.1	133.9	133.3	132.0	130.9	129.9	131.6
UTTAR PRADESH													
Agra	130.6	131.3	131.4	131.4	134.6	136.3	137.3	137.1	137.6	136.9	137.3	138.2	135.0
Ghaziabad/G.B.	128.4	129.4	130.9	132.3	132.4	133.2	135.7	136.1	135.1	134.8	135.4	136.7	133.4
Kanpur	131.0	130.8	131.1	132.1	133.4	134.8	135.2	135.6	134.8	135.3	135.7	136.2	133.8
Lucknow	135.5	135.7	136.7	138.7	138.5	139.2	140.8	140.1	138.2	138.8	140.6	141.0	138.7
Varanasi	128.1	129.2	129.2	130.9	132.5	135.8	135.2	135.2	134.1	134.8	134.5	135.9	133.0
UTTARAKHAND													
Udham Singh	137.0	137.6	137.5	141.3	140.9	142.3	142.3	141.9	141.5	142.5	143.4	144.7	141.1
WEST BENGAL													
Darjeeling	116.4	118.3	118.5	119.7	121.9	123.7	125.2	125.5	125.1	125.4	125.7	126.0	122.6
Durgapur	131.9	131.9	132.0	132.0	133.8	134.5	137.4	137.1	135.6	134.9	135.5	136.3	134.4
Haldia	118.7	120.3	120.6	121.6	121.7	123.8	122.5	122.4	122.1	121.9	122.6	123.4	121.8
Howrah	128.7	130.1	129.9	130.8	131.5	134.0	135.5	135.2	135.0	134.7	135.0	135.2	133.0
Jalpaiguri	123.6	126.7	128.4	131.7	132.9	133.8	134.5	134.3	132.9	132.2	130.4	131.4	131.1
Kolkata	137.3	137.4	137.8	138.6	140.1	140.6	141.0	139.7	138.4	137.8	137.5	138.3	138.7
Raniganj	139.3	139.5	139.0	139.6	139.8	142.5	142.4	141.7	142.0	141.2	139.4	139.4	140.5

TABLE No: 2.2
CONSUMER PRICE INDEX NUMBERS FOR INDUSTRIAL WORKERS OF 4 METRO CITIES & ALL INDIA 2018 -22
(BASE YEAR 2016=100)

Year	All India	% Variation	Delhi	% Variation	Kolkata	% Variation	Chennai	% Variation	Mumbai	% Variation
2018	102.4	4.9	97.5	7.0	112.9	4.4	107.7	3.1	100.9	1.5
2019	110.2	7.6	107.5	10.3	118.6	5.0	113.4	5.3	107.2	6.2
2020	116.4	5.6	111.8	4.0	124.2	4.7	118.2	4.2	112.3	4.8
2021	122.0	4.8	116.4	4.1	126.0	1.4	122.5	3.6	116.6	3.8
2022	129.2	5.9	125.7	8.0	137.4	9.0	127.3	3.9	122.7	5.2

Source : Labour Bureau, Chandigarh.

*Converted figure according to base year 2016=100

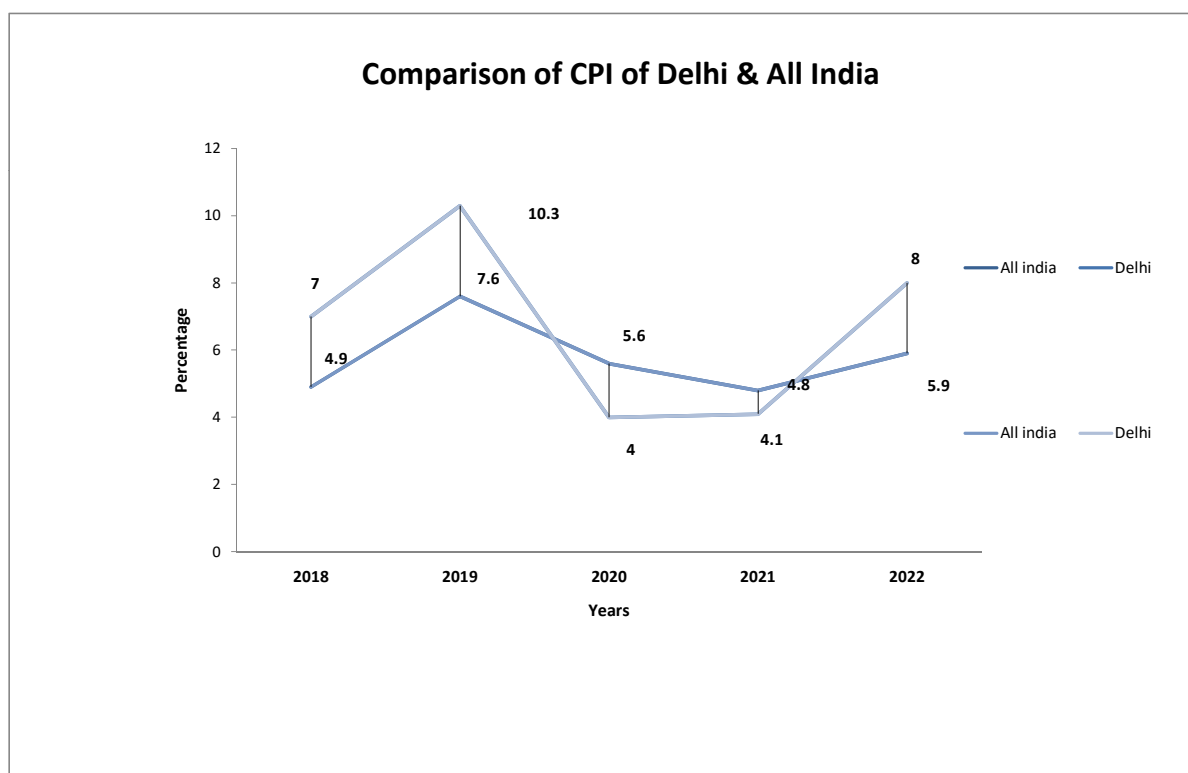


TABLE No:2.3
MONTH AND YEAR WISE CONSUMER PRICE INDEX NUMBERS FOR
INDUSTRIAL WORKERS OF ALL INDIA (GENERAL INDEX) BASE YEAR (2016=100)

MONTH/YEAR					
	2018	2019	2020	2021	2022
1	2	3	4	5	6
JANUARY	100.0	106.6	114.6	118.2	125.1
FEBRUARY	99.7	106.6	113.9	119.0	125.0
MARCH	99.7	107.3	113.2	119.6	126.0
APRIL	100.0	108.3	114.2	120.1	127.7
MAY	100.3	109.0	114.6	120.6	129.0
JUNE	101.0	109.7	115.3	121.7	129.2
JULY	104.5	110.8	116.7	122.8	129.9
AUGUST	104.5	111.1	117.4	123.0	130.2
SEPTEMBER	104.5	111.8	118.1	123.3	131.3
OCTOBER	104.9	112.8	119.5	124.9	132.5
NOVEMBER	104.9	113.9	119.9	125.7	132.5
DECEMBER	104.5	114.6	118.8	125.4	132.3
ANNUAL AVERAGE	102.4	110.2	116.4	122.0	129.2
% variation over previous year	4.9	7.6	5.6	4.8	5.9
Source : Labour Bureau Chandigarh					

Table No.: 2.4
GROUP WISE CONSUMER PRICE INDEX NUMBERS FOR INDUSTRIAL WORKERS OF ALL INDIA (GENERAL INDEX) BASE YEAR (2016=100)

S. NO.	GROUP	Base Year (2016=100)				2022
		2018	2019	2020	2021	
	1	2	3	4	5	6
1	FOOD & BEVERAGES	103.3	109.4	116.9	121.8	129.3
2	PAN,SUPARI, TOBACCO & INTOXICANTS	117.5	122.0	128.1	138.4	145.4
3	CLOTHING & FOOTWEAR	111.1	113.7	116.3	120.2	127.6
4	HOUSING	89.9	106.6	113.3	116.0	120.0
5	FUEL & LIGHT	111.7	116.3	124.5	150.8	171.0
6	MISCELLANEOUS	108.1	112.4	115.3	120.0	126.3
7	GENERAL INDEX	102.4	110.2	119.1	122.0	129.2
Source: Labour Bureau, Chandigarh						

Table No: 3.1							
Month wise General Consumer Price Index-2022 for Rural Area, Urban Area and Combined for Delhi and All India (New Series Base year 2012=100)							
S.No.	Rural			Urban		Combined (Rural+Urban)	
	Month	Delhi	All India	Delhi	All India	Delhi	All India
1	January	159.6	166.4	159.1	165	159.1	165.7
2	February	159.8	166.7	159.4	165.5	159.4	166.1
3	March	160.9	168.7	160.1	166.5	160.1	167.7
4	April	162.9	170.8	161.9	169.2	162	170.1
5	May	163.9	172.5	163.1	170.8	163.1	171.7
6	June	164.5	173.6	161.9	171.4	162	172.6
7	July	165.3	174.3	163.9	172.3	164	173.4
8	August	165.4	175.3	165.2	173.1	165.2	174.3
9	September	165.8	176.4	165.1	174.1	165.1	175.3
10	October	166.9	177.9	165.2	175.3	165.3	176.7
11	November	166.6	177.8	164.6	175	164.7	176.5
12	December	166.4	177.1	162.3	174.1	162.5	175.7
13	Annual	164.0	173.1	162.7	171.0	162.7	172.2
Source :- NSO, MOSPI, Govt. of India.							

TABLE No: 4.1
MONTH AND YEAR WISE WHOLESALE PRICE
INDEX NUMBERS OF ALL INDIA (BASE YEAR 2011-12=100)

MONTH /YEAR	2016-17	2017-18	2018-19	2019-20	2020-21	2021-22	2022-23
1	2	3	4	5	6	7	8
APRIL	109.0	113.2	117.3	121.1	119.2	132	152.3
MAY	110.4	112.9	118.3	121.6	117.5	132.9	155.0
JUNE	111.7	112.7	119.1	121.5	119.3	133.7	155.4
JULY	111.8	113.9	119.9	121.3	121	135.0	154.0
AUGUST	111.2	114.8	120.1	121.5	122	136.2	153.2
SEPTEMBER	111.4	114.9	120.9	121.3	122.9	137.4	151.9
OCTOBER	111.5	115.6	122.0	122.0	123.6	140.7	152.9
NOVEMBER	111.9	116.4	121.6	122.3	125.1	143.7	152.5
DECEMBER	111.7	115.7	119.7	123.0	125.4	143.3	150.5
JANUARY	112.6	116.0	119.2	123.4	126.5	143.8	150.7
FEBRUARY	113.0	116.1	119.5	122.2	128.1	145.3	150.9
MARCH	113.2	116.3	119.9	120.4	129.9	148.9	151.0
ANNUAL AVERAGE	111.6	114.9	119.8	121.8	123.4	139.4	152.5
% VARIATION OVER PREVIOUS YEAR	1.7	2.9	4.3	1.7	1.3	13.0	9.4

Source: Office of the Economic Advisor ,Ministry of commerce & Industry,Govt. of India.

Table No:4.2							
INDEX NUMBERS OF WHOLESALE PRICE IN INDIA BY MAJOR GROUPS AND SUBGROUPS (BASE YEAR 2011-12=100)							
COMM_NAME	COMM_WT	2017-18	2018-19	2019-20	2020-21	2021-22	2022-23
All commodities	100.00000	114.9	119.8	121.8	123.4	139.4	152.5
I PRIMARY ARTICLES	22.61756	130.6	134.2	143.3	145.7	160.7	176.8
(A). FOOD ARTICLES	15.25585	143.2	143.7	155.8	160.7	167.3	179.5
a. FOOD GRAINS (CEREALS+PULSES)	3.46238	142.6	146.7	159.6	159.3	163.5	178.6
a1. CEREALS	2.82378	143.1	151.0	162.3	158.1	160.7	178.9
a2. PULSES	0.63860	140.5	127.3	147.6	164.7	176.0	177.1
b. FRUITS & VEGETABLES	3.47508	155.9	147.3	174.7	179.2	187.6	200.6
b1. VEGETABLES	1.87448	164.0	150.2	197.0	203.6	204.5	215.0
b2. FRUITS	1.60060	146.5	144.0	148.6	150.7	167.7	183.8
c. MILK	4.43999	139.7	143.1	146.7	153.4	156.9	167.8
d. EGGS,MEAT & FISH	2.40156	135.7	138.0	147.0	151.2	164.0	170.6
e. CONDIMENTS & SPICES	0.52885	125.2	129.6	143.9	149.5	159.8	187.2
f. OTHER FOOD ARTICLES	0.94799	144.0	144.4	144.0	162.0	168.3	178.1
(B). NON-FOOD ARTICLES	4.11894	119.6	123.1	128.7	130.5	158.1	172.1
a. FIBRES	0.83931	119.0	127.0	128.2	119.8	158.4	203.0
b. OIL SEEDS	1.11530	129.9	140.5	151.4	161.7	214.4	205.2
c. OTHER NON-FOOD ARTICLES	1.96043	110.9	107.3	104.8	109.0	119.9	131.2
d. FLORICULTURE	0.20390	148.7	164.1	238.0	210.0	217.0	257.4
(C). MINERALS	0.83317	122.5	136.5	154.5	164.9	197.2	203.5
a. METALLIC MINERALS	0.64818	109.1	123.0	147.4	159.8	193.3	191.7
b. OTHER MINERALS	0.18499	169.3	183.5	179.0	183.1	211.0	245.2
(D). CRUDE PETROLEUM & NATURAL GAS	2.40960	73.0	92.4	85.3	70.4	110.3	158.4
II FUEL & POWER	13.15190	93.3	104.1	102.2	94.0	124.6	159.5
(A). COAL	2.13813	118.7	123.3	125.3	126.6	129.0	133.3
(B). MINERAL OILS	7.94968	82.5	96.7	92.3	79.2	126.2	172.9
(C). ELECTRICITY	3.06409	103.7	109.6	111.8	109.6	117.4	143.3
III MANUFACTURED PRODUCTS	64.23054	113.8	117.9	118.3	121.5	135.0	142.6
(A). MANUFACTURE OF FOOD PRODUCTS	9.12173	127.4	128.6	133.9	141.4	157.9	165.3
a. Processing and preserving of meat	0.13405	134.4	136.7	137.5	137.2	142.8	143.7
b. Processing and preserving of fish, crustaceans and molluscs and products thereof	0.20396	128.1	132.1	136.1	139.0	144.1	144.9
c. Processing and preserving of fruit and vegetables	0.13809	119.1	114.3	114.3	120.2	122.3	125.8
d. Manufacture of vegetable and animal oils and fats	2.64293	109.4	117.6	119.3	143.5	187.2	181.9
e. Manufacture of dairy products	1.16545	142.1	136.2	145.0	146.9	149.4	167.0
f. Manufacture of grain mill products	2.00952	137.4	141.6	146.3	143.5	145.6	162.1
g. Manufacture of starches and starch products	0.10955	112.6	116.6	135.5	115.9	133.3	158.9
h. Manufacture of bakery products	0.21459	128.8	129.3	133.5	138.1	146.2	163.0
i. Manufacture of sugar, molasses & honey	1.16275	128.0	111.2	118.3	118.4	122.9	126.8
j. Manufacture of cocoa, chocolate and sugar confectionery	0.17501	126.1	126.7	127.2	128.0	130.5	135.9
k. Manufacture of macaroni, noodles, couscous and similar farinaceous products	0.02640	131.4	134.5	132.7	132.3	136.7	155.8
l. Manufacture of Tea & Coffee products	0.37083	129.1	137.7	139.7	166.5	171.1	178.2
m. Manufacture of Processed condiments & salt	0.16302	118.2	122.2	132.4	147.0	157.5	176.5
n. Manufacture of processed ready to eat food	0.02428	127.2	127.0	128.7	132.2	137.0	141.2
o. Manufacture of Health supplements	0.22500	141.1	143.6	159.9	142.9	153.5	179.4
p. Manufacture of prepared animal feeds	0.35630	153.0	157.5	173.6	170.5	200.9	208.8
(B). MANUFACTURE OF BEVERAGES	0.90907	118.9	120.7	123.6	124.5	126.8	128.9
a. Manufacture of wines & spirits	0.40833	113.8	113.8	117.8	120.2	123.6	129.3
b. Manufacture of malt liquors and malt	0.22526	117.9	120.5	125.7	126.5	130.5	134.5

Table No:4.2							
INDEX NUMBERS OF WHOLESALE PRICE IN INDIA BY MAJOR GROUPS AND SUBGROUPS (BASE YEAR 2011-12=100)							
COMM_NAME	COMM_WT	2017-18	2018-19	2019-20	2020-21	2021-22	2022-23
c. Manufacture of soft drinks; production of mineral waters and other bottled waters	0.27548	127.4	131.2	130.5	129.4	128.6	123.7
(C). MANUFACTURE OF TOBACCO PRODUCTS	0.51357	148.4	150.4	153.4	157.2	160.2	165.3
a. Manufacture of tobacco products	0.51357	148.4	150.4	153.4	157.2	160.2	165.3
(D). MANUFACTURE OF TEXTILES	4.88068	113.4	117.9	117.7	117.6	135.2	142.7
a. Preparation and spinning of textile fibres	2.58154	106.2	110.6	107.9	106.6	128.2	133.2
b. Weaving & Finishing of textiles	1.50903	122.0	127.3	130.1	131.7	146.8	158.9
c. Manufacture of knitted and crocheted fabrics	0.19296	108.6	112.9	114.5	115.2	125.5	129.9
d. Manufacture of made-up textile articles, except apparel	0.29850	124.6	130.3	134.5	132.3	138.7	153.6
e. Manufacture of cordage, rope, twine and netting	0.09776	141.7	138.7	143.1	155.6	168.5	156.8
f. Manufacture of other textiles	0.20089	117.5	118.3	116.8	116.3	126.2	132.2
(E). MANUFACTURE OF WEARING APPAREL	0.81414	136.9	138.8	138.3	138.6	143.1	148.7
a. Manufacture of wearing apparel (woven), except fur apparel	0.59324	137.8	139.4	139.2	138.1	142.0	147.3
b. Manufacture of knitted and crocheted apparel	0.22090	134.5	137.0	135.9	139.8	145.8	152.2
(F). MANUFACTURE OF LEATHER AND RELATED PRODUCTS	0.53540	120.1	121.8	118.6	117.9	119.2	122.2
a. Tanning and dressing of leather; dressing and dyeing of fur	0.14215	110.9	111.0	105.5	101.1	103.4	105.6
b. Manufacture of luggage, handbags, saddlery and harness	0.07540	131.2	134.7	136.3	138.6	141.5	141.0
c. Manufacture of footwear	0.31785	121.6	123.5	120.3	120.6	121.0	125.2
(G). MANUFACTURE OF WOOD AND OF PRODUCTS OF WOOD AND CORK	0.77181	131.5	133.5	133.7	134.6	141.0	143.2
a. Saw milling and planing of wood	0.12417	120.5	124.5	122.2	120.7	128.8	137.6
b. Manufacture of veneer sheets; manufacture of plywood, laminboard, particle board and other panels and boards	0.49330	131.5	136.3	135.5	136.6	141.9	141.8
c. Manufacture of builders' carpentry and joinery	0.03558	159.8	158.7	176.2	185.8	193.9	204.0
d. Manufacture of wooden containers	0.11876	134.5	124.1	125.7	125.7	134.1	136.7
(H). MANUFACTURE OF PAPER AND PAPER PRODUCTS	1.11322	118.9	123.3	121.1	121.7	137.5	152.0
a. Manufacture of pulp, paper and paperboard	0.49296	122.3	129.3	125.0	124.1	141.4	158.4
b. Manufacture of corrugated paper and paperboard and containers of paper and paperboard	0.31422	116.1	116.5	115.0	122.2	137.8	148.3
c. Manufacture of other articles of paper and paperboard	0.30604	116.2	120.6	121.2	117.4	131.0	145.6
(I). PRINTING AND REPRODUCTION OF RECORDED MEDIA	0.67622	143.7	146.6	150.6	153.8	157.8	172.5
a. Printing	0.67622	143.7	146.6	150.6	153.8	157.8	172.5
(J). MANUFACTURE OF CHEMICALS AND CHEMICAL PRODUCTS	6.46505	112.5	119.1	117.5	118.2	133.5	145.4
a. Manufacture of basic chemicals	1.43330	111.2	125.0	119.9	118.6	143.8	159.2
b. Manufacture of fertilizers and nitrogen compounds	1.48497	117.1	121.1	123.1	123.6	129.6	144.8
c. Manufacture of plastic and synthetic rubber in primary form	1.00082	113.0	117.6	112.4	116.7	140.3	143.2
d. Manufacture of pesticides and other agrochemical products	0.45369	115.3	120.2	122.6	124.4	132.1	143.4
e. Manufacture of paints, varnishes and similar coatings, printing ink and mastics	0.49145	108.6	112.7	114.7	114.9	130.4	145.0

Table No:4.2							
INDEX NUMBERS OF WHOLESALE PRICE IN INDIA BY MAJOR GROUPS AND SUBGROUPS (BASE YEAR 2011-12=100)							
COMM_NAME	COMM_WT	2017-18	2018-19	2019-20	2020-21	2021-22	2022-23
f. Manufacture of soap and detergents, cleaning and polishing preparations, perfumes and toilet preparations	0.61219	115.2	116.8	118.6	120.6	128.1	140.8
g. Manufacture of other chemical products	0.69227	110.1	116.6	114.2	115.1	130.3	142.1
h. Manufacture of man-made fibres	0.29636	97.5	104.0	97.9	93.7	106.6	110.7
(K). MANUFACTURE OF PHARMACEUTICALS, MEDICINAL CHEMICAL AND BOTANICAL PRODUCTS	1.99345	121.2	123.5	127.3	130.9	135.9	140.9
a. Manufacture of pharmaceuticals, medicinal chemical and botanical products	1.99345	121.2	123.5	127.3	130.9	135.9	140.9
(L). MANUFACTURE OF RUBBER AND PLASTICS PRODUCTS	2.29851	107.6	109.6	108.5	111.3	124.8	129.7
a. Manufacture of rubber tyres and tubes; retreading and rebuilding of rubber tyres	0.60897	100.3	98.9	98.9	98.3	104.3	111.8
b. Manufacture of other rubber products	0.27178	91.0	91.7	93.5	93.3	101.9	106.4
c. Manufacture of plastics products	1.41776	113.9	117.6	115.4	120.3	138.0	141.8
(M). MANUFACTURE OF OTHER NON-METALLIC MINERAL PRODUCTS	3.20176	112.7	115.9	116.7	117.6	123.7	133.7
a. Manufacture of glass and glass products	0.29504	117.2	121.4	124.5	127.2	139.1	158.1
b. Manufacture of refractory products	0.22322	113.2	111.1	108.7	109.5	115.6	119.0
c. Manufacture of clay building materials	0.12113	94.0	98.0	102.8	109.3	119.3	135.3
d. Manufacture of other porcelain and ceramic products	0.22247	112.5	112.7	113.9	109.5	112.9	118.0
e. Manufacture of cement, lime and plaster	1.64480	113.8	114.3	119.5	120.9	126.4	137.2
f. Manufacture of articles of concrete, cement and plaster	0.29248	118.9	121.5	121.6	125.3	129.2	134.4
g. Cutting, shaping and finishing of stone	0.23351	117.2	118.8	120.2	121.1	122.2	125.6
h. Manufacture of other non-metallic mineral products	0.16911	89.9	130.4	86.6	78.9	90.6	105.9
(N). MANUFACTURE OF BASIC METALS	9.64632	101.4	112.2	106.2	111.4	140.1	148.7
a. Inputs into steel making	1.41103	98.2	113.0	100.6	109.2	150.8	159.7
b. Metallic iron	0.65301	99.4	117.8	107.7	113.3	147.7	165.9
c. Mild Steel - Semi Finished Steel	1.27356	93.2	99.5	95.1	99.8	119.1	127.0
d. Mild Steel -Long Products	1.08063	95.6	110.2	105.5	112.0	137.4	149.7
e. Mild Steel - Flat products	1.14442	104.9	119.6	108.7	117.2	157.5	155.0
f. Alloy steel other than Stainless Steel- Shapes	0.06671	97.3	111.7	102.8	108.3	133.7	146.9
g. Stainless Steel - Semi Finished	0.92396	98.2	112.7	102.9	108.7	141.7	151.9
h. Pipes & tubes	0.20534	116.1	126.6	126.2	127.9	155.9	175.4
i. Manufacture of non-ferrous metals incl. precious metals	1.69264	107.9	112.2	107.0	112.3	139.7	145.9
j. Castings	0.92451	104.8	109.8	112.8	109.1	118.9	130.7
k. Forgings of steel	0.27051	118.4	126.8	146.5	145.7	159.0	172.4
(O). MANUFACTURE OF FABRICATED METAL PRODUCTS, EXCEPT MACHINERY AND EQUIPMENT	3.15498	109.5	115.1	115.5	115.9	130.5	139.0
a. Manufacture of structural metal products	1.03144	105.9	112.8	113.9	114.1	123.9	132.7
b. Manufacture of tanks, reservoirs and containers of metal	0.65951	122.6	127.3	124.4	127.8	156.2	161.1
c. Manufacture of steam generators, except central heating hot water boilers	0.14462	109.0	105.9	104.7	98.9	96.1	100.5
d. Forging, pressing, stamping and roll-forming of metal; powder metallurgy	0.38342	90.7	96.3	100.5	96.7	117.5	135.2
e. Manufacture of cutlery, hand tools and general hardware	0.20758	102.3	99.7	100.5	102.9	108.2	112.2
f. Manufacture of other fabricated metal products	0.72841	114.8	123.1	124.0	125.0	136.5	145.0
(P). MANUFACTURE OF COMPUTER, ELECTRONIC AND OPTICAL PRODUCTS	2.00875	110.1	111.8	110.4	109.8	113.7	116.6

Table No:4.2							
INDEX NUMBERS OF WHOLESALE PRICE IN INDIA BY MAJOR GROUPS AND SUBGROUPS (BASE YEAR 2011-12=100)							
COMM_NAME	COMM_WT	2017-18	2018-19	2019-20	2020-21	2021-22	2022-23
a. Manufacture of electronic components	0.40241	103.7	100.9	98.1	99.1	106.0	115.0
b. Manufacture of computers and peripheral equipment	0.33637	127.4	132.5	135.0	134.8	134.7	135.0
c. Manufacture of communication equipment	0.30998	110.6	116.7	117.0	114.9	121.7	129.4
d. Manufacture of consumer electronics	0.64095	103.1	103.8	98.8	98.5	102.1	99.7
e. Manufacture of measuring, testing, navigating and control equipment	0.18056	106.9	109.1	111.5	107.7	108.4	112.8
f. Manufacture of watches and clocks	0.07551	137.8	137.9	139.1	141.8	145.6	151.2
g. Manufacture of irradiation, electromedical and electrotherapeutic equipment	0.05546	102.9	103.2	103.6	102.8	106.1	108.9
h. Manufacture of optical instruments and photographic equipment	0.00751	108.0	108.7	110.2	102.7	98.3	100.5
(Q). MANUFACTURE OF ELECTRICAL EQUIPMENT	2.92970	109.6	111.7	111.3	113.6	122.3	128.8
a. Manufacture of electric motors, generators, transformers and electricity distribution and control apparatus	1.29789	105.8	107.7	109.0	113.2	119.7	126.3
b. Manufacture of batteries and accumulators	0.23573	117.4	117.7	117.0	117.1	121.8	131.9
c. Manufacture of fibre optic cables for data transmission or live transmission of images	0.13327	116.5	126.1	109.9	98.1	103.1	116.6
d. Manufacture of other electronic and electric wires and cables	0.42798	105.7	111.2	109.7	115.9	140.7	146.3
e. Manufacture of wiring devices, electric lighting & display equipment	0.26294	109.9	108.6	111.1	111.1	114.5	117.2
f. Manufacture of domestic appliances	0.36600	121.3	121.6	119.9	119.7	128.4	134.1
g. Manufacture of other electrical equipment	0.20589	107.2	108.6	108.6	109.5	113.2	117.4
(R). MANUFACTURE OF MACHINERY AND EQUIPMENT	4.78899	108.9	111.3	113.1	114.0	120.0	126.2
a. Manufacture of engines and turbines, except aircraft, vehicle and two wheeler engines	0.63840	102.3	103.0	104.8	106.3	119.2	126.9
b. Manufacture of fluid power equipment	0.16151	115.3	118.2	119.9	119.4	122.1	128.4
c. Manufacture of other pumps, compressors, taps and valves	0.55183	108.6	108.9	111.2	111.6	115.1	117.6
d. Manufacture of bearings, gears, gearing and driving elements	0.34015	109.0	111.2	110.1	111.8	118.1	124.2
e. Manufacture of ovens, furnaces and furnace burners	0.00837	78.5	78.2	80.0	80.2	74.2	79.8
f. Manufacture of lifting and handling equipment	0.28509	105.8	110.4	111.5	113.4	120.0	126.3
g. Manufacture of office machinery and equipment	0.00582	130.2	130.2	130.2	130.2	130.2	130.2
h. Manufacture of other general-purpose machinery	0.43675	127.3	129.6	130.9	128.7	133.4	143.0
i. Manufacture of agricultural and forestry machinery	0.83265	112.8	116.9	120.6	121.6	128.4	137.2
j. Manufacture of metal-forming machinery and machine tools	0.22363	99.6	101.8	108.1	108.4	114.2	120.5
k. Manufacture of machinery for mining, quarrying and construction	0.37079	75.0	75.7	75.1	75.7	78.2	84.9
l. Manufacture of machinery for food, beverage and tobacco processing	0.22793	121.1	124.7	125.2	128.0	130.1	127.7
m. Manufacture of machinery for textile, apparel and leather production	0.19214	117.4	119.9	119.7	121.9	125.3	130.0

Table No:4.2							
INDEX NUMBERS OF WHOLESALE PRICE IN INDIA BY MAJOR GROUPS AND SUBGROUPS (BASE YEAR 2011-12=100)							
COMM_NAME	COMM_WT	2017-18	2018-19	2019-20	2020-21	2021-22	2022-23
n. Manufacture of other special-purpose machinery	0.46834	119.5	123.8	126.3	128.7	134.7	140.6
o. Manufacture of renewable electricity generating equipment	0.04559	70.4	67.3	66.0	65.2	66.6	69.2
(S). MANUFACTURE OF MOTOR VEHICLES, TRAILERS AND SEMI-TRAILERS	4.96853	110.7	112.8	114.5	117.8	122.7	127.6
a. Manufacture of motor vehicles	2.60026	112.6	113.3	115.2	119.4	122.6	126.0
b. Manufacture of parts and accessories for motor vehicles	2.36827	108.6	112.2	113.7	116.1	122.7	129.3
(T). MANUFACTURE OF OTHER TRANSPORT EQUIPMENT	1.64777	110.2	111.7	118.0	126.2	131.7	137.4
a. Building of ships and floating structures	0.11734	158.8	158.8	158.8	158.8	158.9	162.5
b. Manufacture of railway locomotives and rolling stock	0.10979	104.0	104.7	106.4	105.0	104.4	105.5
c. Manufacture of motor cycles	1.30205	105.3	106.6	114.3	124.7	131.0	137.6
(U). MANUFACTURE OF FURNITURE	0.72672	120.3	127.3	130.9	133.2	150.1	157.2
a. Manufacture of furniture	0.72672	120.3	127.3	130.9	133.2	150.1	157.2
(V). OTHER MANUFACTURING	1.06417	109.2	107.0	112.7	132.4	137.9	147.7
a. Manufacture of jewellery and related articles	0.99638	106.7	103.9	109.9	130.5	136.0	146.5
b. Manufacture of musical instruments	0.00124	171.0	174.1	174.0	173.7	192.3	189.3
c. Manufacture of sports goods	0.01238	126.0	127.4	129.7	132.0	140.4	150.5
d. Manufacture of games and toys	0.00476	128.2	132.2	136.9	142.4	150.9	159.0
e. Manufacture of medical and dental instruments and supplies	0.04941	151.9	159.2	162.1	167.4	171.8	170.4
IV FOOD INDEX	24.37758	137.3	138.1	147.6	153.4	163.8	174.2

**STATISTICAL TABLES WITH BASE YEAR
(1982=100) & (2001=100)**

Table 5.1 MONTH AND YEAR WISE CONSUMER PRICE INDEX NUMBERS FOR INDUSTRIAL WORKERS IN DELHI (GENERAL INDEX)													
Month /Year	Base Year 2001=100												
	2007	2008	2009	2010	2011	2012	2013	2014	2015	2016	2017	2018	2019
1	2	3	4	5	6	7	8	9	10	11	12	13	14
January	124	128	141	158	173	181	200	215	228	239	249	267	292
February	125	129	140	157	170	182	202	213	227	237	249	266	293
March	125	132	141	157	169	185	204	215	228	238	250	264	297
April	128	134	143	158	172	188	206	219	229	242	251	264	299
May	128	135	143	159	172	189	200	219	232	242	252	264	301
June	128	136	144	159	172	188	203	222	232	244	252	265	302
July	130	138	150	164	178	194	210	229	235	253	263	283	307
August	131	139	151	164	178	195	215	229	239	252	264	286	308
September	132	141	152	169	182	197	216	230	240	253	263	287	311
October	131	145	152	168	184	198	218	230	241	253	262	287	309
November	130	144	155	168	182	198	221	229	242	252	264	284	309
December	129	141	156	169	182	199	214	227	240	249	263	283	311
Annual Average	128	137	147	163	176	191	209	223	234	246	257	275	303
% variation over	7	7.3	10.9	8	8.5	9.4	6.7	4.9	5.1	4.5	7.0	10.2	

SOURCE: LABOUR BUREAU CHANDIGARH

Base Year 1982=100 changed to 2001=100 w.e.f.1.1.2006

Linking Factor for changing old base year 1982=100 into new base year 2001=100 is 5.60

Table No. 5.2

**GROUP WISE CONSUMER PRICE INDEX NUMBERS FOR
INDUSTRIAL WORKERS IN DELHI (ANNUAL AVERAGE)**

	GROUP	Base Year 1982=100	Base Year 2001=100											
		2007	2008	2009	2010	2011	2012	2013	2014	2015	2016	2017	2018	2019
1	2	3	4	5	6	7	8	9	10	11	12	13	14	15
1	FOOD	129	142	158	174	189	206	231	246	265	278	289	293	309
	% variation over previous year	10.3	10.1	11.3	10.1	8.6	9.0	12.1	6.5	7.7	4.9	4.0	1.4	5.5
2	PAN, SUPARI, TOBACCO & INTOXICANTS	117	124	131	146	171	193	220	236	258	288	313	333	341
	% variation over previous year	6.4	6.0	5.6	11.5	17.1	12.9	14.0	7.3	9.3	11.6	8.7	6.4	2.4
3	FUEL AND LIGHT	149	152	152	163	181	203	220	253	222	216	226	238	220
	% variation over previous year	0	2.0	0	7.2	11.0	12.2	8.4	15.0	-12.3	-2.7	4.6	5.3	-7.6
4	HOUSING	122	124	132	150	167	175	190	202	212	227	240	304	401
	% variation over previous year	1.7	1.6	6.5	13.6	11.3	4.8	8.6	6.3	5.00	7.10	5.7	26.7	31.9
5	CLOTHING, BEDDING & FOOTWEAR	112	116	120	131	155	179	190	198	208	216	230	246	253
	% variation over previous year	1.8	3.6	3.4	9.2	18.3	15.5	6.1	4.2	5.1	3.8	6.5	7.0	2.8
6	MISCELLANEOUS	135	141	149	160	163	177	186	196	203	213	220	225	231
	% variation over previous year	4.7	4.4	5.7	7.4	1.9	8.6	5.1	5.4	3.6	4.9	3.3	2.3	2.7
7	GENERAL INDEX	128	137	147	163	176	191	209	223	234	246	257	275	303
	% variation over previous year	4.9	7.0	7.3	10.9	8.0	8.5	9.4	6.7	4.9	5.1	4.5	7.0	10.2

SOURCE:- LABOUR BUREAU CHANDIGARH

Base Year 1982=100 changed to 2001=100 wef 1.1.2006

TABLE No: 5.3
STATE/CENTRE WISE CONSUMER PRICE INDEX NUMBERS FOR INDUSTRIAL WORKERS (2012 TO 2019)
Base Year 2001=100

STATE/CENTRE/ ITEMS	WEIGHT	2012	2013	2014	2015	2016	2017	2018	2019
ANDHRA PRADESH									
Gudur									
General	-								
Guntur									
General	0.81	208	233	251	259	270	275	281	294
Hyderabad									
General	1.51	190	207	217	228	240	246	252	267
Visakhapatnam									
General	1.98	213	236	249	263	275	279	286	298
Warangal									
General	0.98	222	247	259	272	287	287	302	323
Godavarikhani									
General	1.17	216	242	262	274	287	293	302	334
Vijayawada									
General	1.18	207	236	240	251	267	275	282	298
ASSAM									
Doom Dooma-Tinsukia									
General	0.44	182	196	213	235	246	259	266	284
Guwahati									
General	0.50	184	198	214	226	242	247	255	281
Labac - Silchar									
General	0.33	197	216	243	247	257	258	262	278
Mariani - Jorhat									
General	0.46	185	195	217	230	241	243	249	266
Rangapara - Tezpur									
General	0.46	171	186	213	228	238	241	247	259
JHARKHAND									
Jamshedpur									
General	1.02	232	251	265	288	314	327	342	363
Jharia									
General	0.84	222	262	279	290	304	306	332	367
Kodarma									
General	0.43	236	263	285	297	319	321	351	389
Noamundi									
General	-								
Ranchi - Hatia									
General	0.71	235	267	286	297	305	317	349	392
Giridih									
General	0.55	250	282	293	289	295	301	321	350
Bokaro									
General	0.91	210	229	251	268	276	276	289	307
BIHAR									
Monghyar-Janalpur									
General	1.06	215	238	253	274	297	298	316	351
GUJARAT									
Ahmedabad									
General	1.37	206	233	238	249	261	266	273	288
Vadodra									
General	2.00	198	219	230	244	261	261	269	282
Bhavnagar									
General	1.66	206	221	225	239	257	265	280	300
Rajkot									
General	1.81	216	231	237	248	269	270	284	300
Surat									
General	1.18	192	218	224	238	248	258	263	278
GOA									
General	0.36	222	248	258	276	289	295	319	332
HARYANA									
Faridabad									
General	1.34	207	218	226	240	253	257	267	280
Yamunanagar									
General	1.67	215	230	241	248	265	273	282	300

TABLE No: 5.3
STATE/CENTRE WISE CONSUMER PRICE INDEX NUMBERS FOR INDUSTRIAL WORKERS (2012 TO 2019)
Base Year 2001=100

STATE/CENTRE/ ITEMS	WEIGHT	2012	2013	2014	2015	2016	2017	2018	2019
Himachal Pradesh									
General	0.57	188	208	222	232	242	254	261	274
JAMMU & KASHMIR									
Srinagar									
General	0.45	190	203	219	235	247	261	270	282
KARNATAKA									
Bangalore									
General	1.95	211	238	254	268	278	287	289	299
Belgaum									
General	0.96	217	242	253	266	279	290	297	310
Hubli-Dharwar									
General	1.18	219	248	266	281	293	299	314	337
Mercara									
General	0.63	208	240	255	269	282	296	302	313
Mysore									
General	0.92	205	242	258	267	280	295	302	316
KERALA									
Alwaye									
General	-								
Mundakayam									
General	1.83	213	251	264	274	280	299	304	320
Quilon									
General	1.75	206	236	260	277	297	323	339	365
Ernakula									
General	3.08	199	225	248	260	268	289	304	321
Thiruvanthpuram									
General	-								
MADHYA PRADESH									
Balaghat									
General	-								
Bhopal									
General	1.35	221	238	251	260	271	276	301	333
Indore									
General	1.05	200	222	232	243	252	257	269	288
Jabalpur									
General	1.55	212	231	240	256	274	279	298	325
Chhindwara									
General	1.21	216	242	247	262	281	286	293	314
CHHATISGARH									
Bhilai									
General	0.97	241	265	277	291	306	310	319	332
MAHARASHTRA									
Mumbai									
General	9.57	212	237	257	276	287	289	294	312
Nagpur									
General	1.06	240	265	277	294	306	312	344	396
Nasik									
General	1.50	223	242	255	271	285	291	322	364
Pune									
General	1.81	217	237	254	266	277	275	306	345
Solapur									
General	0.95	216	239	261	281	293	294	305	335
ORISSA									
Barbil									
General	-								
Rourkela									
General	0.71	222	245	260	270	289	296	308	320
Angul Talchar									
General	0.88	221	241	256	265	284	297	310	335
PUNJAB									
Amritsar									
General	1.07	227	240	255	263	271	281	308	343
Ludhiana									
General	0.57	205	222	235	251	273	275	282	299
Jalandhar									
General	0.96	205	224	239	250	270	281	299	326

TABLE No: 5.3
STATE/CENTRE WISE CONSUMER PRICE INDEX NUMBERS FOR INDUSTRIAL WORKERS (2012 TO 2019)
Base Year 2001=100

STATE/CENTRE/ ITEMS	WEIGHT	2012	2013	2014	2015	2016	2017	2018	2019
RAJASTHAN									
Ajmer									
General	1.56	215	233	240	248	256	260	272	292
Jaipur									
General	1.09	214	230	238	245	257	268	282	313
Bhilwara									
General	0.73	215	236	245	259	269	274	278	296
TAMIL NADU									
Coimbatore									
General	1.26	193	217	231	243	250	265	275	290
Coonoor									
General	1.18	204	224	241	261	272	281	304	336
Chennai									
General	2.31	196	218	230	248	255	261	269	284
Madurai									
General	1.17	196	218	239	259	265	277	281	303
Salem									
General	1.12	192	216	233	254	268	270	280	297
Tiruchirappally									
General	1.37	208	232	253	261	266	285	289	304
TRIPURA									
Tripura									
General	0.26	177	194	210	227	244	256	264	267
UTTAR PRADESH									
Agra									
General	1.91	220	240	255	269	291	303	332	362
Ghaziabad									
General	1.82	209	232	240	256	270	277	306	341
Kanpur									
General	2.09	214	237	255	268	285	287	313	347
Saharanpur									
General	-								
Varanasi									
General	2.64	208	231	247	265	278	279	302	338
Lucknow									
General	2.75	203	224	242	261	274	275	305	343
WEST BENGAL									
Asansol									
General	1.08	231	256	277	290	303	304	318	342
Kolkata									
General	1.51	199	222	239	251	261	266	278	292
Darjeeling									
General	0.53	196	215	232	239	253	260	272	279
Durgapur									
General	1.14	215	263	282	287	298	306	317	331
Haldia									
General	1.74	211	230	241	275	302	310	325	351
Howrah									
General	0.79	199	215	228	240	258	267	281	293
Jalpaiguri									
General	0.48	192	221	241	252	266	272	280	285
Raniganj									
General	0.99	195	214	228	238	253	251	271	297
Siliguri									
General	0.48	197	218	233	241	252	261	268	287
CHANDIGARH									
Chandigarh									
General	0.16	213	232	245	254	269	278	296	314
DELHI									
Delhi									
General	1.99	191	209	223	234	246	257	275	303
PONDICHERRY									
Pondicherry									
General	0.59	209	237	256	271	286	299	308	320
ALL INDIA									
General		209	232	247	261	274	281	295	317

SOURCE: LABOUR BUREAU, Chandigarh.

Table No: 5.4

**CONSUMER PRICE INDEX NUMBERS FOR INDUSTRIAL WORKERS
OF METRO CITIES & ALL INDIA 2002-2019 (BASE YEAR 1982=100 UPTO 2005,
BASE YEAR 2001=100 FROM 2006)**

Year	All India	% Variation	Delhi	% Variation	Kolkata	% Variation	Chennai	% Variation	Mumbai	% Variation
2002	477	4.1	550	4.0	530	7.7	513	5.3	558	5.7
2003	496	4.0	570	3.6	541	2.1	533	3.9	583	4.5
2004	514	3.6	598	4.9	565	4.4	549	3.0	604	3.6
2005	536	4.3	648	8.4	587	3.9	565	3.0	611	1.2
2005 *	116	4.3	116	8.4	115	3.9	114	3.0	118	1.2
2006	123	6.0	122	5.2	121	5.2	118	3.4	126	6.8
2007	131	6.5	128	4.9	132	9.1	124	5.1	134	6.3
2008	142	8.4	137	7.0	142	7.6	135	8.9	144	7.5
2009	157	10.6	147	7.3	156	9.9	149	10.4	159	10.4
2010	176	12.1	163	10.9	172	10.3	161	8.1	174	9.4
2011	192	9.1	176	8.0	185	7.6	171	6.2	192	10.3
2012	209	8.9	191	8.5	198	7.0	195	14.0	212	10.4
2013	232	11.0	209	9.4	222	12.1	218	11.8	237	11.8
2014	247	6.5	223	6.7	239	7.7	230	5.5	257	8.4
2015	261	5.7	234	4.9	251	5.0	248	7.8	276	7.4
2016	274	5.0	246	5.1	261	4.0	255	2.8	287	4.0
2017	281	2.6	257	4.5	266	1.9	261	2.4	289	0.7
2018	295	5.0	275	7.0	278	4.5	269	3.1	294	1.7
2019	317	7.5	303	10.2	292	5.0	284	5.6	312	6.1

Source : Labour Bureau Chandigarh

*Converted figure according to base year 2001=100

Base Year 1982=100 changed to 2001=100 w.e.f. 1.1 2006

Table No. 5.5															
MONTH AND YEAR WISE CONSUMER PRICE INDEX NUMBERS FOR INDUSTRIAL WORKERS OF ALL INDIA (GENERAL INDEX)															
BASE YEAR 1982=100				Base Year 2001=100											
MONTH/YEAR	2005*	2006	2007	2008	2009	2010	2011	2012	2013	2014	2015	2016	2017	2018	2019
1	2	3	4	5	6	7	8	9	10	11	12	13	14	15	16
JANUARY	114	119	127	134	148	172	188	198	221	237	254	269	274	288	307
FEBRUARY	113	119	128	135	148	170	185	199	223	238	253	267	274	287	307
MARCH	113	119	127	137	148	170	185	201	224	239	254	268	275	287	309
APRIL	114	120	128	138	150	170	186	205	226	242	256	271	277	288	312
MAY	114	121	129	139	151	172	187	206	228	244	258	275	278	289	314
JUNE	114	123	130	140	153	174	189	208	231	246	261	277	280	291	316
JULY	116	124	132	143	160	178	193	212	235	252	263	280	285	301	319
AUGUST	117	124	133	145	162	178	194	214	237	253	264	280	285	301	320
SEPTEMBER	117	125	133	146	163	179	197	215	238	253	266	277	285	301	322
OCTOBER	118	127	134	148	165	181	198	217	241	253	269	278	287	302	325
NOVEMBER	119	127	134	148	168	182	199	218	243	253	270	277	288	302	328
DECEMBER	119	127	134	147	169	185	197	219	239	253	269	275	286	301	330
ANNUAL AVERAGE	116	123	131	142	157	176	192	209	232	247	261	274	281	295	317
% variation over previous year	4.3	6.0	6.5	8.4	10.6	12.1	9.1	8.9	11.0	6.5	5.7	5.0	2.6	5.0	7.5
Source : Labour Bureau Chandigarh															
Base changed w.e.f. 1.1 2006 from 1982=100 to 2001=100															
*Converted figure according to base year 2001=100															

Table No. 5.6															
GROUP WISE CONSUMER PRICE INDEX NUMBERS FOR INDUSTRIAL WORKERS OF ALL INDIA (GENERAL INDEX)															
	GROUP	BASE YEAR 2001=100													
		2006	2007	2008	2009	2010	2011	2012	2013	2014	2015	2016	2017	2018	2019
	1	2	3	4	5	6	7	8	9	10	11	12	13	14	15
1	FOOD INDEX	122	134	149	169	190	204	223	254	271	288	304	308	310	328
2	PAN,SUPARI, TOBACCO & INTOXICANTS	115	125	136	146	163	187	215	244	268	298	321	348	375	389
3	FUEL AND LIGHT	128	132	141	147	159	181	208	226	239	247	249	257	269	280
4	HOUSING	125	130	135	154	195	218	235	251	264	281	296	305	361	428
5	CLOTHING, BEDDING & FOOTWEAR	113	117	121	126	133	151	166	179	188	196	204	212	220	225
6	MISC.	125	129	139	147	154	165	178	193	205	214	223	232	243	253
7	GENERAL INDEX	123	131	142	157	176	192	209	232	247	261	274	281	295	317
Source: Labour Bureau, Chandigarh															
Base Year 1982=100 changed to 2001=100 wef 1.1.2006															

ANNEXURES
(Facsimile of Schemes)

GOVERNMENT OF INDIA
MINISTRY OF LABOUR & EMPLOYMENT
LABOUR BUREAU
CONSUMER PRICE INDEX NUMBERS FOR INDUSTRIAL WORKERS (BASE:2016=100)
WEEKLY STATEMENT OF RETAIL PRICES
PART -I

STATE : DELHI

Market: _____

Week ending: _____

CENTRE : DELHI

Price Collection Date: _____

Sr. No.	Items		Unit	Price Quotations		Re-marks
				Rs P I	Rs P II	
1	2	3	4	5	6	7
I-A	Food					
1	Rice	i) 'Parmal', medium quality with some broken grains, loose, unboiled	1 Kg.			
2		ii) 'Sarbati', basmati, Broken, medium quality, loose, unboiled	1 Kg.			
3	Wheat	i) 'Dara', medium quality, brownish, loose	1 Kg.			
4		ii) 'Punjab', medium quality, loose	1 Kg.			
5	Wheat atta	i) 'Ashirwad', wheat atta, pack of 10 Kg.	Each			
6		ii) Flour Mill made, Local, loose, medium quality	1 Kg.			
7	Arhar Dal	'Tur-dal', Kanpuri, medium quality, loose, clean	1 Kg.			
8	(i) Gram Dal	'Chana dal', split, medium quality, without husk, loose, clean	1 Kg.			
9	(ii) Gram-Whole	'Kala-Chana', medium quality, loose, local, clean	1 Kg.			
10	(i) Moong-Whole	'Akha green', medium quality, local, loose, clean	1 Kg.			
11	(ii) Moong Split Washed	'Moong dal', without husk, medium quality, loose, clean	1 Kg.			
12	(iii) Moong Dal split with husk	Medium quality, local, loose, clean, with husk	1 Kg.			
13	(i) Masur-Whole	Medium quality, loose, local, clean	1 Kg.			
14	(ii) Masur Dal Washed	'Malka', split, Medium quality, loose, local, clean	1 Kg.			
15	(i) Urd Whole	'Akha', medium quality, local, loose, clean	1 Kg.			
16	(ii) Urd Split Washed	Without husk, medium quality, loose, local, clean	1 Kg.			
17	(iii) Urd Split with husk	'Chilke wali urd dal', medium quality, local, loose, clean	1 Kg.			
18	Kabli Chana	Medium quality, loose, local, white, clean	1 Kg.			

19	Rajmah	Chitra', medium quality, loose, local, clean	1 Kg.			
20	Besan	Made of gram dal, medium quality, local, loose	1 Kg.			
21	Mixed Pulses	Medium quality, loose, local, clean	1 Kg.			
22	Milk-Cow	Fresh, unboiled, loose	1 Litre			
23	Milk-Buffalo	Fresh, unboiled, loose	1 Litre			
24	Paneer/ Cheese	Fresh, loose, local	250gms.			
25	Fish Fresh	'Rohu', medium size, fresh	1 Kg.			
26	Goat Meat	Fresh, cut in pieces with bones	1 Kg.			
27	Buffalo Meat	Fresh cut in pieces	1 Kg.			
28	Chicken	'Broiler', (dressed), fresh with bones	1 Kg.			
29	Eggs Hen	'Farm Hen Eggs', unboiled, medium size	1 Dozen			
30	Pure Ghee	'Nova Brand', poly pack of 1 litre	Each			
31	Mustard Oil	'Sarson-Ka-Tel', mill processed, local, loose	1 Litre			
32	Soyabean Oil	'Fortune' polypack of 1 litre	1 Litre			
33	Vanaspati ghee	'Dalda', polypack of 1 litre	1 Litre			
34	Sunflower Oil	'Sundrop', Mill processed, polypack of 1 Litre	1 Litre			
35	Banana (Jan-Dec)	'Kela', Chitriwala, medium size, fresh, ripe	1 Dozen			
36	Apple (Jan-Dec)	'Royal', Shimla Apple, medium size, fresh, ripe, pinkish red	1 Kg.			
37	Orange (Sept-April)	'Nagpuri Santra', medium quality, fresh, ripe	1 Dozen			
38	Mango (March-Aug)	'Safeda', medium quality, fresh, ripe, yellow	1 Kg.			
39	Papaya (Jan-Dec)	'Papita', medium quality, fresh, ripe, yellowish green	1 Kg.			
40	Guava (July-March)	Medium quality, ripe, yellowish green	1 Kg.			
41	Kharbooza (March-June)	Medium quality, fresh, ripe, yellowish	1 Kg.			
42	Water Melon (Apr-June)	Medium quality, fresh, ripe, dark green	1 Kg.			
43	Grapes (Jan-May)	Medium quality, fresh, ripe green	1 Kg.			
44	Pomegranate (Jan-Dec)	'Anaar Dana', medium quality & size, fresh, ripe	1 Kg.			
45	Almond	'American Giri,' Badam, whole, medium quality, loose	250gms.			

46	Dates	'Khajoor', whole, blackish, medium size with seed	250gms.			
47	Cashewnut	'Kaju', medium quality, slightly broken (in two pieces), loose	250gms.			
48	Resin, kishmish etc.	Medium quality, brownish, loose	250 gms.			
49	Potato (Jan-Dec)	'Aloo', desi, medium size, fresh	1 Kg.			
50	Onion (Jan-Dec)	'Nashik' pyaaz, medium quality, desi, dry	1 Kg.			
51	Radish (Oct-May)	'Muli', fresh with leaves, bundle of of approx. 500 gms.	500 gms.			
52	Carrot (Nov-April)	'Gajjar', desi, medium quality, fresh, reddish, without leaves	500 gms.			
53	Arbi/Arum (Jan-Dec)	'Arbi', desi, medium quality, fresh	500 gms.			
54	Garlic (Jan-Dec)	'Lassun', dry, desi, medium quality, whole	100 gms.			
55	Ginger (Jan-DE)	'Adarak', desi, medium quality, fresh	100 gms.			
56	Brinjal (Jan-Dec)	'Baingan', round/long, medium quality, fresh	500 gms.			
57	Cauliflower (Sept-April)	'Phool Gobhi', desi, medium quality, fresh, without stalk, with leaves	500 gms.			
58	Cabbage (Oct-May)	'Gobhi', desi, medium quality, fresh	500 gms.			
59	Lady's Finger (March-Oct)	'Bhindi', desi, medium quality, fresh	500 gms.			
60	Tomato (Jan-Dec)	'Tamatar', medium quality, fresh, ripe, red	500 gms.			
61	Pumpkin (Kaddu) (Jan-Dec)	'Kaddu', fresh, local, Green/Yellow	500 gms.			
62	Gourd (Jan-Dec)	'Ghiya', medium quality, fresh, long/round	500 gms.			
63	Bitter Gourd (Jan-Dec)	'Karela', medium quality, fresh, green	500 gms.			
64	Peas (Jan-Dec)	'Matar', medium quality, fresh, green	500 gms.			
65	Capsicum (Jan-Dec)	'Shimla Mirch', medium quality, fresh, green	500 gms.			
66	Green Chillies (Jan-Dec)	'Hari Mirchi', desi, medium quality, fresh	100 gms.			
67	Lemon (Jan-Dec)	'Nimbu', medium size, ripe, greenish yellow	1 Each			
68	Cucumber (Jan-Dec)	'Kheera', medium quality, fresh, green	500 gms.			
69	Sugar-Crystal	White, crystal, medium quality, local, loose	1 Kg.			
70	Sugar-Desi (Khandsari)	Medium quality, local, loose, yellowish	1 Kg.			

71	Gur	Desi, round, medium quality, fresh, brownish	1 Kg.			
72	Salt	'Tata Iodised', polypack of 1 Kg	1 Kg.			
73	Turmeric	'MDH', polypack of 100 gms.	100 gms.			
74	Chillies Dry	'MDH', polypack of 100 gms.	100 gms.			
75	Corriander	'Sukha-Dhania', whole, dry, medium quality, local	100 gms.			
76	Jira/Cumin	Medium quality, whole, loose, local	100 gms.			
77	Black Pepper	'Kali Mirch', medium quality, loose	100 gms.			
78	Mixed Spices/Garam Masala	'MDH', pack of 100 gms.	100 gms.			
79	Sugarcane Juice	Fresh juice mixed with lemon, ice and saltish masala, glass of approx. 250 ml.	Each			
80	Tea (Hot Drink)	Prepared with boiled water, milk, sugar and tea leaves, a cup of approx. 70 ml.	Each			
81	Cooked meal	Thali - Rice plate, 2 roti, 2 vegetable, dal, papad, curd, onion salad and pickle.	Each			
82	Snack Saltish (Samosa)	Made of maida, stuffed with potato, peas, ajwain and masala, approx. weight 70	Each			
83	Idli	Made from rice atta, a plate of 2 pieces served with sambar and chutney, medium size	Per Plate			
84	Pav Bhaji	A plate of 2 pav with bhaji and chutney	Per Plate			
85	Chowmin	Made of maida noodles, vegetables, a plate of approx. 200 gms.	Per Plate			
86	Chocolate	'Cadbury', Dairy Milk, pack of 34 gms.	Each			
87	Chips	'Potato Chips', local, fresh, poly pack of 100 gms.	Each			
88	Pickles	"Tops", mixed pickles, Poly Pack of 400 gms.	Each			
89	Namkeen , Mixture	'Haldiram Namkeen', Khatta Meetha, pack of 200gms.	Each			
90	Zarda, Kimam, Surti Gutka	Tulsi"00" Brand Royal Zafrani Zarda 5 gram	5 Gram			
91	Pan Finished	Made of Pan leaf, Katha, Chuna, Supari, Saunf, Elaichi and Masala	Each			
92	Katha	'Kanpuri katha', loose	10 gms.			
93	Chewing Tobacco	'Cheni Kheni', premium filter, tobacco, pouch of 0.36 gms.	0.36 Gram			
94	Petrol	Unleaded Petrol	Litre			

Name & Signature of Price Collector: _____

Name & Signature of Price Supervisor: _____

GOVERNMENT OF INDIA						
MINISTRY OF LABOUR & EMPLOYMENT						
LABOUR BUREAU						

CONSUMER PRICE INDEX NUMBERS FOR INDUSTRIAL WORKERS (PROPOSED BASE : 2016=100)						
MONTHLY STATEMENT OF RETAIL PRICES						
PART-II						
STATE/UT : DELHI			Market:			
			Month:			
Centre : Delhi			Price Collection Date:			
Sr. No.	Items	Specifications with local name, if any	Unit	Price Quotations		Remarks
				Rs P I	Rs P II	
1	2	3	4	5	6	7
Food and Beverages						
1	Bread	"Britannia", sliced bread, Fresh, polypack of 400 gms. (White bread)	1 Each			
2	Grinding Charges	Grinding charges for wheat, without deduction of Jalti (Atta)	For 10 kg.			
3	Dairy Milk-Toned	"Mother Dairy", pasteurised, toned milk, Fat 3%, SNF 8.5%, polypack 500ml.	1 Each			
4	Butter	Amul Butter Cake of 100gms	1 Each			
5	Tea-Leaf	"Tata CTC", polypack of 250 gms.	1 Each			
6	Cold Beverages	"Amul", cool flavoured milk, glass bottle of 150ml	1 Each			
7	Fruit Juice	"Real", mixed fruit juice, 1 litre tetra pack	1 Each			
8	Biscuits	"Parle G" Poly Pack of 70 gms	1 Each			
9	Bidi	"502 Brand", pack of 25 beedies (Bundal)	1 Each			
10	Cigarette	"Red & White", Flake Filter, packet of 10 cigarettes	1 Each			
11	Country Liquor	"Shaukeen", local desi sharab, 50° proof, 28.5% v/v, bottle of 750ml.	1 Each			
12	Foreign Refined Liquor	"Bagpiper", Whiskey, 42.8 v/v, 25° UP, 75 degree proof, bottle of 750 ml.	1 Each			
13	Beer	"Kingfisher Premium", chilled, bottle of 650 ml.	1 Each			
14	Tailoring Charges i) Men	"Shirt and Pant", ordinary stitching for adult	Pair			
15	ii) Women	"Ladies Suit", Ordinary stitching of Salwar and Kamiz	Suit			
16	Electricity Charges	Charges for Domestic use, first 100 units including meter rent & electricity duty etc.	100units			
17	Cooking Gas - Subsidised	Refill charges for LPG Domestic cylinder of wt. 14.2 Kg	1 Each			
18	Match Box	"Home lite", match box of 40 sticks	1 Each			
19	Mosquito Repellent	"Good Night", mini Jambo pack of 10 pieces	1 Each			
20	Sweeper, Refuse Collection Charges	Door to door daily refuse/ garbage collection for household	1 Each			
21 & 22	Bed-Sheet	(i) Khadi Showroom:- Double Bedsheet, 100% Cotton ,size 2.10mt x 2.20mt	1 Each			
		(ii) BOMBAY DYEING:- "Distney ",Single Bed, size 150cm x 224 cm	1 Each			
23	Blanket, Rug	"Dorukha Himachal", Size 2.50mtr X 1.50mtr	1 Each			
24	Quilt	Polyfill:- "Bombay Dyeing", 100 % cotton with HS Fiber Fill,size 2.18 mtr x 2.40 mtr	1 Each			
25	Electric Bulb	"Philips", plain, 60 watt	1 Each			

26	Tube Light	"Philips", 40 watt, thinner tube (cool white), size 48"	1 Each			
27	Bucket - Plastic	"Ratan Brand", 16 Litre, with cap	1 Each			
28	Washing Soap	"Surf Excel", cake, polypack of 100 gms.	1 Each			
29	Detergent Powder	"Surf Excel", polypack of 1 kg.	1 Each			
30	Blue or Neel	"Ujala Supreme", plastic bottle of 75 ml.	1 Each			
31	Toilet Cleaner	"Harpic", Power Plus, plastic bottle of 650 ml.	1 Each			
32	Incense/Agarbati	"Cycle Brand", scented, 3-in-1, classic fragrance, approx wt. 124 gms, pack of 100 sticks	1 Each			
33 & 34	Barber, Beautician etc.					
	i) Hair Cut	Gents hair cut, ordinary, in a saloon	Per Person			
	ii) Beautician/ Parlor charges	"Coronation", Harbal Facial for 45 to 60 Minutes.	Per Person			
35	Bedstead, Cot	Made of Iron pipe, covered by plywood, medium quality, folding, size 2.5" x 6"	1 Each			
36	Almirah -Wood	Made of plywood, local, size 6' x 2' x 1.5', with 2 shelves	1 Each			
37	Utensil-Stainless Steel	Steel tope (patila), 26 gauge, medium quality, local	1 Each			
38	Electric Fan	"Orient Ceiling Fan", white, three blades 48"	1 Each			
39	Cooler	"Kenstar", plastic body, 12 Litre capacity	1 Each			
40	Washing Machine	"L.G." P7556N3F (NB), semi automatic, 6.5kg capacity	1 Each			
41	Refrigerator	"Samsung", GL 205 KMG 5(BBNI) 190 ltr.	1 Each			
42	Laboatory/Testing Charges	Complete Blood Testing charges	Per Test			
43 & 44	i) Admission Fee	Admission fee in general ward of Govt. Hospital	Per Patient			
	ii) Room charges - Private ward	Charges for Non- A.C. Room in Private ward	Per Patient			
45	Operation Charges	Motia-Bind Operation charges for one eye, without Lenses	Per Surgery			
46	General Medical practitioner	Consultation fee of M.B.B.S doctor at clinic, without medicine	Per Consultatio			
47	Specialist Physician	Consultation fee of M.D. doctor at clinic, without medicine	Per Consultatio			
48	Cough Syrup	"Benadryl", plastic bottle of 150ml.	1 Each			
49	Anti Fever	"Crocina", strip of 15 tablets	1 Each			
50	ESI Contribution	Monthly ESI Contribution	Per Employee			
51	Mobile Charges (Post paid plan)	BSNL/MTNL basic plan charges+charges for extra 100 minutes inclusive of all taxes				
52	Internet Charges	Internet Surfing charges for 1 Hour				
53 & 54	Rail Fare i) Local	New Delhi to Ghaziabad, general class by ordinary train, Per Adult	Per Ticket			
	Rail Fare ii) Outstation	New Delhi to Aligarh, Per Adult, II nd class sleeper by mail/express train	Per Ticket			
55 & 56	Bus Fare i) Local	Ordinary Bus Fare, Shahdra to New Delhi bus stop, per adult	Per Ticket			
	Bus Fare ii) Outstaion	Ordinary Bus Fare, ISBT Kashmiri Gate to Meerut, per adult	Per Ticket			

57	Auto-rickshaw Fare	Charges for 10 Kms. + charges for subsequent Kms.	Per Trip			
58	Metro Fare	New Delhi to Jahangir Puri, without any discount	Per Passenger			
59	Cycle-rickshaw Fare	New delhi to Chandni Chowk	Per Passenger			
60	School Bus / Van Charges	10 km distance for one student in school Van/Bus for One Month	Per Student			
61	Motor Cycle, Scooter, Moped	"Honda CD 110", dream Black, ex-showroom price	1 Each			
62	Repair Charges	Service charges of Motorcycle with washing , without engine oil	1 per service			
63	Mobile Phone Handset	"Samsung, Guru 1200", coloured screen 2.1 inch screen, multimedia.	1 Each			
64 & 65	Cinema	Front Hall/Lowest-Class	Per Ticket			
		Balcony	Per Ticket			
66	Dish TV/DTH Charges	Basic plan +charges for 1 additional package for specified number of channels	1 Each			
67	Sports Goods	"Football", Cosco Company	1 Each			
68	LED/ Television	"Samsung", 22" LED display full HD	1 Each			
69	Camera	"Sony DSC-W730", Digital Cam,16MP with 8 GB Memory card	1 Each			
70	Newspapers and Periodicals	Danik Jagran Hindi Daily	1 Each			
71	Secondary School Fee (Govt.)	Admission Fee inclusive of all charges + Recurrent fee for whole year + any other extra charges for the year for class XI	Per Student			
72	Secondary School Fee (Pvt.)	Admission Fee inclusive of all charges + recurrent fee for whole year + any other extra charges for the year for class XI	Per Student			
73	College / University Education Fee	Admission Fee inclusive of all charges + Recurrent fee for whole year + any other extra charges for the	Per Student			
74	Secondary School Books	"XI th class", full set of prescribed books	Per Set			
75	Tertiary Education / College Books	"B.com- II", full set of prescribed books	Per Set			
76	Ball Pen	"Reynolds", 0.45 fine tip, plastic body	1 Each			
77	Note Book	"Navneet", regular size, ruled, hard cover, 180 pages	1 Each			
78	Private Coaching Fee (s)	Accounts coaching, B.Com.-II, full syllabus inclusive of all the study material in tutorial	Per Student			
79	Toilet Soap	"Lux", Peach and Cream, pack of 100 gms.	1 Each			
80	Tooth Paste	"Colgate"Advanced Protection, Pack of 100 gms.	1 Each			
81	Tooth Brush	"Colgate Zig-Zag", adult, Medium size	1 Each			
82	Face Cream	"Fair and lovely", Advanced Multivitamin, tube of 25 gms.	1 Each			
83	Hair Oil	"Dabur Amla", plastic bottle of 90 ml.	1 Each			
84	Shampoo	"Clinic Plus", strong and long, plastic bottle of 80 ml.	1 Each			
85	Shaving Cream	"Palmolive", tube of 70 gms.	1 Each			
86	Razor	"Gillete Vector Plus", adjustable twin blade, use and throw	1 Each			

87	Hand Wash	"Dettol", liquid handwash, skin care, bottle of 225 ml.	1 Each			
88	Scents & Perfumes	'Charlie', glass bottle of 40 ml.	1 Each			
89	Lipsticks	"Lakme", no. 452, 4 gms.	1 Each			
90	Sanitary Napkins	"Wisper Choice Ultra", pack of 6 pads	1 Each			
Name & Signature of Price Collector :						
Name & Signature of Price Supervisor:						

GOVERNMENT OF INDIA
MINISTRY OF LABOUR & EMPLOYMENT
LABOUR BUREAU

CONSUMER PRICE INDEX NUMBERS FOR INDUSTRIAL WORKERS (BASE : 2016=100)
MONTHLY STATEMENT OF RETAIL PRICES OF CLOTHING, AND FOOTWEAR

PART-III

STATE : DELHI

MARKET: _____

MONTH: _____

CENTRE: DELHI

PRICE COLLECTION DATE: _____

IV- CLOTHING, BEDDING AND FOOTWEAR

A CLOTHING

MAFAT LAL, KAMLA NAGAR, SABJI MANDI ,DELHI

Sr. No.	Items	Specification with local name, if any	Unit	Price Quotation (Rs.)		Remarks
1	2	3	4	5	6	7
1	Saree Cotton	"Sapna", 100% cotton without Blouse, Size 44" x 5.5mtr	Each			
2	Saree Synthetic	"Poonam" ,100% Synthetic ,Size 44" x 5.5mtr	Each			
3	Ladies Dress Material Synthetic	"Jorjat", 100% Polyester Width 44"	Metre			

KHADI SHOWROOM, KAMLA NAGAR , DELHI

1	Saree Cotton	"Khadi Saree",100% cotton, size 115cms x 5.5mtr, without blouse	Each			
2	Saree Silk	"Khadi", ST, size 115cms x 5.5mtr without blouse	Each			
3	Ladies Kurti-panjama Readymade	Kurti Panjama Full size, 100% cotton, size 90cm	Each			

D.C.M STORE,2776, MAIN BAZZAR,SABJI MANDI,DELHI

1	Saree Cotton	No.7/21/5111,100% Cotton, Printed, Size 114cms x 5mtr	Each			
2	Saree Synthetic	"Vinita",100% Polyester, coloured , Printed, Size 112 cm x 5 mtr	Each			
3	Ladies Dress Material	"Ladies spun print"52% viscose,48% Polyester, printed, width 110cms	Metre			

OTHER THAN SHOWROOM ITEMS,DELHI

1	WOOLEN SWEATER	LUDHIANA MADE, ACRYLIC AND WOOL BLEND FREE SIZE	Each			
2	Shirt - Readymade	"Sparky," Size -38-44, 100% cotton	Each			
3	Trousers Pants Ladies -RM	"Gazoz Brand ," size 36, Jeans Or Lotus Jeans - Size 28-36	Each			
4	Trousers Pants Gents -RM	" Sparky ," size 30-40 cm ,100% Cotton	Each			

5	KURTA PYJAMA SUIT- MALE	LOCAL MADE 100%COTTON, MEDIUM SIZE	PER SET			
6	COAT/OVER COAT R.MADE	STANDARD SIZE, MADE OF MIX CLOTH, POLYSTER 65% WOOL 35%	EACH			
7	Frocks - Readymade	Local Made , 100 % cotton, Size no. 24	Each			
8	School Uniform Boys i) Trouser (Syn.) for Boys	Local stiched ,RM, (10-12yrs), Terricot	Each			
9	ii) Shirt (Syn.) for Boys	Local stiched ,RM, (10-12yrs), Terricot	Each			
10	School Uniform Girls i) Shirt (Syn.) for Girls	Local stiched ,RM, (10-12yrs), Terricot	Each			
11	ii) Skirt (Syn) for Girls	Local stiched ,RM, (10-12yrs), Terricot	Each			
12	Ganji Baniyan	"VIP" , 100% cotton, Size 85-90	Each			
13	Undergarments: (i)Underwear (Gents)	"VIP" , 100% cotton, "U" Shape Size 85-90	Each			
14	(ii) Brassieres	"Rupa", 100% Cotton, Size 32"	Each			
BATA SHOWROOM, Sabzi-Mandi, Delhi						
1	Shoes Leather	"Bata", article Code 8246650, size'8' gents	Pair			
2	Sandal Leather (i) Ladies	"Bata", article Code 56-8682 ladies, size'7'	Pair			
3	Sandal Leather ii) Gents	"Bata", article Code 8646159, size'8' gents	Pair			
4	PVC Shoes	Bata, Article code 8726130, size 8	Pair			
5	Chappal Rubber	"Bata", article Code 8714165, size'8'	Pair			
6	Canvas Shoes	'CAMPUS" ACTION, MEN'S, SYNTHETIC & NYLON MESH SPORTS SHOES, size 8	Pair			

Name & Signature of Price Collector : _____

Name & Signature of Price Supervisor : _____

B.DETAILS OF RATIONED ITEMS DISTRIBUTED THROUGH FAIR PRICE SHOPS (PDS)**NAME OF CENTRE : DELHI****NAME OF MARKET : SHOP NO/ID : NAME OF DEALER/SHO : MONTH : YEAR:**

1	2	3	4	5	6	7	8	9	10	11	12
S.No.	ITEM	CATEGORY	NO OF CARDS	NO OF UNITS	ADMISIBILITY	PRICE OF	OPENING BALANCE	QUANTITY RECEIVED	TOTAL QUANTITY	QUANTITY SOLD DURING	CLOSING
						ITEM		DURING THE MONTH	AVAILABLE FOR SALE DURING THE MONTH	THE MONTH	BALANCE
					(KG)		(KG)	(KG)	(8+9) (KG)	(KG)	(KG)
					PER CARD	PER UNIT	PER KG				(10-11)
1	RICE										
		APL									
		BPL (SBPL+CBPL)									
		PHH									
		AAY									
		PR/JRC									
2	WHEAT										
		APL									
		BPL (SBPL+CBPL)									
		PHH									
		AAY									
		PR/JRC									
3	WHEAT ATTA	Nil									

NAME OF CENTRE : DELHI

NAME OF MARKET :

SHOP NO/ID :

NAME OF DEALER/SHOP : MONTH : YEAR:

1	2	3	4	5	6	7	8	9	10	11	12
Sr.No	ITEM	CATEGORY	NO OF CARDS	NO OF UNITS	ADMISIBILITY	PRICE OF ITEM	OPENING BALANCE	QUANTITY RECEIVED DURING THE MONTH	TOTAL QUANTITY AVAILABLE FOR SALE DURING THE MONTH	QUANTITY SOLD DURING THE MONTH	CLOSING BALANCE
					KG		(KG)	(KG)	(8+9) (KG)	(KG)	(10-11) (KG)
					PER CARD	PER UNIT	PER KG				
4	SUGAR										
		APL									
		BPL + AAY									
		PHH									
5	SALT	Nil									
6	K.OIL	Nil									