



GOVERNMENT OF NATIONAL CAPITAL TERRITORY OF DELHI



REPORT ON
INDEX OF
INDUSTRIAL PRODUCTION
2nd QUARTER (PROVISIONAL) OF 2023-24
BASE YEAR: (2011-12)

**DIRECTORATE OF ECONOMICS & STATISTICS AND
OFFICE OF THE CHIEF REGISTRAR (BIRTHS & DEATHS)
VIKAS BHAWAN –II, 3rd FLOOR, 'B'-WING
UPPER BELA ROAD, NEAR METCALF HOUSE, CIVIL LINES, DELHI – 110054**



GOVERNMENT OF NATIONAL CAPITAL TERRITORY OF DELHI

**REPORT ON
INDEX OF
INDUSTRIAL PRODUCTION**

**2nd QUARTER (PROVISIONAL) OF 2023-24
BASE YEAR: (2011-12=100)**

**DIRECTORATE OF ECONOMICS & STATISTICS AND
OFFICE OF THE CHIEF REGISTRAR (BIRTHS & DEATHS)
VIKAS BHAWAN –II, 3rd FLOOR, 'B'-WING
UPPER BELA ROAD, NEAR METCALF HOUSE, CIVIL LINES, DELHI – 110054**

Website: www.director-des.delhi@gov.in

P R E F A C E

The present report on Index of Industrial Production for the second quarter of 2023-24 is brought out by this Directorate as per the base year 2011-12. This quarterly report is in new series with base year 2011-12 presenting the physical growth of the registered manufacturing sector of Delhi for the second quarter of the year 2023-24. The methodology used for compilation of Index of Industrial Production is devised by National Statistical Office, Ministry of Statistics & Programme Implementation, Government of India.

Index of Industrial Production (IIP) is of immense use for measuring the industrial development of a State / Territory. The index indicates relative changes over the time in the volume of production in non-agricultural commodities and it is an effective tool to measure the trend of current Industrial Production. Index of Industrial Production is a single representative figure (an abstract number) to measure the general level of Industrial performance in an economy. It measures the short term changes in the volume of industrial production during the given period w.r.t. chosen base period i.e. 2011-12 in the current series.

The State level IIP serves as a vital quantitative indicator of trends in the registered manufacturing segment in the short term. This is a useful and instant tool in the hands of Planners and Policy makers to gauge the health of the industry in short run as the final statement on this sector comes with publication of results of Annual Survey of Industry with a time lag of 2 years. The index of Industrial Production also serves as an indicator for estimation of industrial production at constant prices. This report gives trends in index month-wise, industry division-wise and broad sub sector-wise.

This publication is brought out by the ASI / IIP unit of this Directorate. Strenuous efforts have been made by the Officers / Officials of ASI / IIP unit in collection of data from the Industrial units. This Directorate is indebted to the co-operation extended by all Industries / units for supply of data periodically. This Directorate is also grateful to National Statistical Office (IS Wing), Kolkata for imparting training and extending time to time guidelines in compilation of Index.

Suggestions, if any, for improvement of the coverage and contents in the future publication of this report, are welcome.

DELHI
DECEMBER, 2023

(G.S.RAWAT)
DIRECTOR(DES)

**TEAM OF OFFICERS/OFFICIALS
ASSOCIATED WITH THE
PREPARATION OF THE REPORT**

- 1. SH. SHAN-E-ALAM : JOINT DIRECTOR/H.O.O.**
- 2. SH. BHAG SINGH MEENA : DEPUTY DIRECTOR**
- 3. SMT. MAMTA DEVI : STATISTICAL OFFICER**
- 4. SH. ROBIN VERMA : STATISTICAL ASSISTANT**
- 5. SH. SANDEEP MANN : STATISTICAL ASSISTANT**
- 6. SH. NAVEEN RAWAT : STATISTICAL ASSISTANT**
- 7. SH. RAVI KUMAR : STATISTICAL ASSISTANT**

CONTENTS

CHAPTER PAGE

I. Introduction	01-03
II. Methodology	04-12
III. Brief analysis of Index of Industrial production	13- 23
IV. Use Based Index of Industrial Production	24- 27

GRAPHICAL REPRESENTATION

[G-2.1] Weighting Diagram at 02-Digit level of NIC-2008	09
[G-3.1] Month-wise comparison General Index 2 nd Qtr. of 2023-24 with 2022-23	14
[G-3.2] Sector-wise comparison of Averages of 2 nd Qtr. of 2023-24 with 2022-23	14
[G-3.3] Sector-wise % change 2 nd Qtr. comparison of 2023-24 with 2022-23	15
[G-3.4] Half yearly comparison of General Index 2023-24 with 2022-23	17
[G-3.5] Half yearly comparison of average monthly IIP 2023-24 with 2022-23	17
[G-3.6] Half yearly comparison of % change 2023-24 with 2022-23	18
[G-4.1] Category wise used based classification of 2 nd Qtr. of 2023-24 with 2022-23	26
[G-4.2] Category wise % change in used based classification of 2 nd Qtr. of 2023-24 with 2022-23	26

STATEMENTS

2.1	Distribution of weight at 02-Digit level of NIC 2008	08
2.2	Item Basket with weights at NIC-03 digit level	10-12
3.1	Sector-wise comparison of IIP 2 nd Qtr. of 2023-24 with 2022-23	13
3.2	Sector-wise comparison of 2 nd Qtr. of 2023-24 with 2022-23 of IIP Delhi vs IIP All India	15
3.3	Half yearly comparison of IIP 2023-24 with IIP 2022-23	16
3.4	Half yearly comparison of 2023-24 with 2022-23 IIP Delhi vs IIP All India	18
3.5	Sector-wise comparison of IIP 2 nd Qtr. of 2023-24 (PROVISIONAL) with 1 st Qtr. 2023-24 (REVISED)	19
3.6	Sector-wise comparison of IIP 1 ST Qtr. of 2023-24 with 2 ND Qtr. 2023-24 of All India	20
3.7	IIP at NIC-02 digit level 2008 (base year 2011-12=100) for (PROVISIONAL) 2 nd Qtr. of 2023-24 & 2022-23	21

3.7(A)	IIP at NIC-02 digit level 2008 (base year 2011-12=100) for 1 st Qtr. of 2023-24(REVISED) & 2022-23	22
4.1	Category wise used based classification of 2 nd Qtr. of 2023-24(PROVISINAL) & 2022-23	25
4.2	Category wise % change in used based classification of 2 nd Qtr. of 2023-24(PROVISIONAL) & 1 st Qtr. of 2023-24(REVISED)	27

ANNEXURE

CHAPTER ONE

INTRODUCTION

It is well known that several economic / statistical indicators (estimates of some parameters or characteristics) are suggested and used by the economists / statisticians for measuring the performance of various sectors of the economy or the entire economy. Considering the Industrial sector, it may be noted that there are several products and each product is measured in a definite unit. For example, while production of clothes is expressed in meters (thousand meters or lakh meters), the production of coal is expressed in tonne (million tonnes, billion tonnes, etc.), the production of natural gas is expressed in cubic meters and the production of oil in litres (gallons, barrels, etc.). Individual indicators of production are expressed in different units and tell about that particular product of the economy. For an overall assessment of all the activities of the Industrial sector or the entire economy, it is essential to combine the various individual indicators into a summary or composite measure, which is free of the units of measurement. An Index Number, including the IIP, is such a composite or summary measure.

Index numbers are averages that measure the short-term changes in a variable or a group of variables during a particular period with reference to a chosen base period. The first and foremost use of an index number lies in its ability to summarize the performance of a large number of sectors or segments of the economy in a single figure. Although index numbers are short-term measures, these are often used for long-term economic analysis, viz. for summarizing past developments, forecasting future trends and making decisions on policy issues.

National Industrial Classification (NIC), which is developed in harmony with the International Standard Industrial Classification (ISIC), is the basis for classification of all economic activities within the boundary of the country. Appropriate classes / divisions / sub-divisions of NIC available at the particular time are included in the compilation of IIP.

The production as used in IIP relates to national product at constant prices. Further, national product can be measured at factor cost or at market prices and it is the former which is relevant here, for IIP should not be influenced by the levels of taxation and subsidies.

An index is a composite / summary indicator, an absolute number free of units of measurement and expressed, generally, as a percentage with reference to a chosen point. It is a number that shows the percentage change (s) in a variable or group of variables during a

particular period with respect to a chosen reference period, called the base period. Index of Industrial Production (IIP) is defined as a summary measure that measures the changes in the volume of industrial production of a representative basket of industrial products during a particular period with respect to a chosen base period. The IIP for the base period is taken as 100 and that for the study period shows the percentage increase or decrease over the base period.

Index of Industrial Production (IIP) is of immense use for measuring the industrial development of a State / Union Territory. The index indicates relative changes over the time in the volume of production in non-agricultural commodities and it is an effective tool to measure the trend of current Industrial Production. Index of Industrial Production is a single representative figure (an abstract number) to measure the general level of Industrial performance in an economy. It measures the short term changes in the volume of industrial production during the given period w.r.t. chosen base period. The figure (s) used extensively by Govt. Department, Industrial Association, Research Industries, and Academicians etc. for research and policy formulation purposes. At the National level, the index of industrial production is being compiled by the National Statistical Office, Ministry of Statistics & Programme Implementation, Govt. of India and is released on monthly basis. This index, however, does not serve the purpose for evaluating the industrial growth of a State / Union Territory. Therefore, the Directorate of Economics and Statistics has been compiling / releasing the monthly indices of industrial production for the National Capital Territory of Delhi on quarterly / annual basis since 1976.

In the first series, 1970 was the base year for compiling the IIP both by the NSO (erstwhile Central Statistical Organization) & Directorate of Economics and Statistics. The base year was, however, shifted to 1980-81 in the year 1987 as per recommendations made by the Working Group so as to accommodate the latest structural developments that have taken place in the industrial profile during the seventies. Accordingly, the Directorate of Economics and Statistics also adopted the base year of 1980-81 since 1989-90.

The main lacuna of State Level Index of Industrial Production (IIP) is that the Indices lacked comparability due to use of different base year, periodicity & data sources etc. The need for a comparable state level IIP to facilitate studies on the state-wise performance of Industrial sector has been felt for quite some time. Accordingly, a Technical Advisory Committee (TAC) was constituted in June, 1995 to formulate guidelines and methodology for preparation of comparable IIP. On the basis of recommendations of TAC it was decided to bring forward the base year from 1980-81 to 1993-94. Subsequently, the base year was

revised from 1993-94 to 1999-2000 and then 1999-2000 to 2004-05, now it has been shifted to 2011-12 to compile comparable IIP.

Accordingly, as per initial guidelines of NSO, Govt. of India in July 2015, the item basket & weighting diagram were prepared after intensive field work. The Index for the period of second Quarter IIP of the year 2023-24 is presented in this report with the new base year 2011-12.

Indices of industrial production has also been presented broad industry group wise at NIC 2-digit level and also Use-based categories of products.

xxx

CHAPTER TWO

METHODOLOGY

The specifications with regard to the drawing of the item basket and weighting diagram as recommended by the Working Group have been elucidated below as guidelines for framing the IIP for States / UTs with base year 2011-12.

2.1 ITEM BASKET

The scope of IIP constitutes the mining, manufacturing and electricity sectors. However, in absence of any mining activity in Delhi only manufacturing and electricity sectors are considered. This time item basket for manufacturing sector were selected and provided to each state / UT by National Statistical Office (IS-Wing), Kolkata. In case of the Manufacturing sector, the basis for selection of item basket is the GVO (Gross value of Output) figures for products from the Annual Survey of Industries (ASI) 2011-12. The methodology used by NSO for the construction of state-level IIP is as below:-

- i. Using the ASI 2011-12 production data pertaining to NIC 10 to 32 the first job was to remove **‘other products and by-products’** from all the industry groups after re-distributing their values over the rest of the products occurring in the respective industry groups (NIC 3 digits).
- ii. Subsequently, each item (7-digit NPCMS) is placed in alignment with a particular industry group (at NIC 3-digit level) in which the product’s maximum GVO occurred, leaving with a unique product description, its NPCMS code, its maximum value occurring over the complete dataset and the industry group pertaining to the maximum value.
- iii. From the list stated above, the product descriptions at the 7-digit level of the NPCMS corresponding to not-elsewhere-classified (n.e.c.) products are removed and the contributions of all such products in a particular industry group are re-distributed among the non- ‘n.e.c.’ products. This is done to avoid ambiguity of description as well as to facilitate easy identification and collection of data pertaining to these items from the factories.
- iv. The list of products thus obtained is arranged in descending order of value of output within each 3-digit level of NIC and then starting from the highest contributor, all the

products are selected till total value of output of the selected products becomes at least 80% of the total value of output at each NIC 3-digit level.

2.2 WEIGHTING DIAGRAM

Industrial production refers to the totality of the outputs of several economic activities, which are expressed or measured in different units. For example:- steel, copper, cement, etc. are measured in Kg. or multiples of it, whereas clothes are measured in meter or its multiples. Direct addition of these quantities requires a common denominator or unit. The common denominator used for this aggregation in computing the national product is the 'money value'. In case of IIP the interest is to find a common unit that can be used to measure all the industrial outputs in quantitative or volumetric terms, and no such common unit is available. The only alternative is to make all the quantity measurements free of their units. This is easily achieved by computing the production relatives, which are the ratios of the productions of a particular product during the current period and the base period. These production relatives show the relative changes in the volume of the production over the periods under comparison and tell about the performance of the sectors. Further, the relative importance of various economic activities is different and these differentials need to be reflected while measuring the performance of the entire industrial sector. With a view to achieving this, the production relatives are attached appropriate weights, which are the net output or the gross value added from that industrial activity. These weighted production relatives are aggregated by applying an appropriate mathematical formula to obtain a composite or summary measure of industrial production, the IIP.

The methodology for deriving the weighting diagram for State IIP is detailed as under:

- i. **Weights at sector level:** In allocation of weights, total weight is taken as 1000 and this is apportioned in two industrial sectors namely registered manufacturing and electricity as per their contribution in State GVA.
- ii. **Weights at 2-digit level:** The weight for the manufacturing sector is distributed at 2- digit levels of NIC in proportion to the total GVA in each 2-digit level of NIC for the State from ASI 2011-12 data.
- iii. **Weights at 3-digit level:** Weights in each of the NIC 2 digit level is then distributed into NIC 3 digit levels in proportion to their respective GVA figures for the State from ASI 2011-12.
- iv. **Weights at product / item group level:** NIC-3 digit level weights are then distributed into selected products / item groups in proportion to their GVOs for the State from ASI 2011-12.

2.3 SELECTION OF FACTORIES

Once the item basket for a State / UT has been derived, the list of factories under an item is selected by considering complete list of factories having a substantial combined /aggregate share (at least 50%) of production of the item in the State / UT from ASI 2011-12 data.

2.4 COLLECTION OF DATA

For preparation of the current series of Index of Industrial Production (Base Year 2011-12), Production data w.r.t. 90 items was collected from total 135 factories / units (presently 106 operational units) through intensive field visits, by post and online arrangement. For some items, production is taken in terms of value as specifications are heterogeneous in nature for those items. The items include leather garments, wearing apparel, corrugated box, water-proof footwear and books.

To overcome the problem of delayed response / non-response the following procedure has been adopted for estimation of production of such non-responding units on monthly basis. Suppose out of say “n” units selected for a particular month, n_1 units give timely response and the remaining of n_2 ($n-n_1$) units might not submitted the return for the particular month in time. The production of item of these n_2 non-responding units have been estimated either on the basis of the trend in production of the n_1 responding units or average production of last three months for a particular item for which data has not been received for the month under report, is taken under consideration.

2.5 CALCULATION OF INDEX

The Index of Industrial Production is calculated as Weighted Arithmetic Mean of the production relatives in respect of selected items mathematically by using the following formula:-

$$I = \frac{\sum R_i \times W_i}{\sum W_i}$$

Where I is the Index.

R_i is the production relative of i^{th} and W_i is the weight allotted to it.

The production relative (R_i) of i^{th} item for the month has been calculated by using the following formula:-

$$R_i = \frac{P_{ic}}{P_{io}} \times 100$$

Where P_{ic} = Production of i^{th} item in the current month.

P_{io} = Production of the i^{th} item in the base month.

Annual average monthly production Index is the simple Arithmetic Mean of monthly Industrial production indices for all 12 months of a particular financial year.

$$\text{Annual average monthly Index} = \frac{1}{12} \sum_{m=1}^{12} I_m$$

I_m = Index of Industrial Production of m^{th} month ($m = 1, 2, \dots, \dots, 12$)

XXX

TABLE 2.1: DISTRIBUTION OF WEIGHT AT 2 DIGIT LEVEL OF NIC 2008

SL. NO.	NIC 2 DIGIT	DESCRIPTION	WEIGHT
1	10	MANUFACTURE OF FOOD PRODUCTS	143.18
2	11	MANUFACTURE OF BEVERAGES	0.46
3	12	MANUFACTURE OF TOBACCO PRODUCTS	3.33
4	13	MANUFACTURE OF TEXTILES	13.74
5	14	MANUFACTURE OF WEARING APPAREL	102.30
6	15	MANUFACTURE OF LEATHER AND RELATED PRODUCTS	23.25
7	16	MANUFACTURE OF WOOD AND OF PRODUCTS OF WOOD AND CORK, EXCEPT FURNITURE; MANUFACTURE OF ARTICLES OF STRAW AND PLAITING MATERIALS	1.14
8	17	MANUFACTURE OF PAPER AND PAPER PRODUCTS	5.13
9	18	PRINTING AND REPRODUCTION OF RECORDED MEDIA (THIS DIVISION EXCLUDES PUBLISHING ACTIVITIES, SEE SECTION J FOR PUBLISHING ACTIVITIES)	34.93
10	19	MANUFACTURE OF COKE AND REFINED PETROLEUM PRODUCTS	0.57
11	20	MANUFACTURE OF CHEMICALS AND CHEMICAL PRODUCTS	24.62
12	21	MANUFACTURE OF PHARMACEUTICALS, MEDICINAL CHEMICAL AND BOTANICAL PRODUCTS	24.46
13	22	MANUFACTURE OF RUBBER AND PLASTICS PRODUCTS	13.18
14	23	MANUFACTURE OF OTHER NON-METALLIC MINERAL PRODUCTS	1.00
15	24	MANUFACTURE OF BASIC METALS	13.11
16	25	MANUFACTURE OF FABRICATED METAL PRODUCTS, EXCEPT MACHINERY AND EQUIPMENT	26.69
17	26	MANUFACTURE OF COMPUTER, ELECTRONIC AND OPTICAL PRODUCTS	29.87
18	27	MANUFACTURE OF ELECTRICAL EQUIPMENT	35.87
19	28	MANUFACTURE OF MACHINERY AND EQUIPMENT N.E.C.	26.92
20	29	MANUFACTURE OF MOTOR VEHICLES, TRAILERS AND SEMI-TRAILERS	45.79
21	30	MANUFACTURE OF OTHER TRANSPORT EQUIPMENT	2.70
22	31	MANUFACTURE OF FURNITURE	2.28
23	32	OTHER MANUFACTURING	11.58
24	35	ELECTRICITY	413.90
		ALL	1000

G-2.1 Weighting Diagram at 2 digit level of NIC 2008

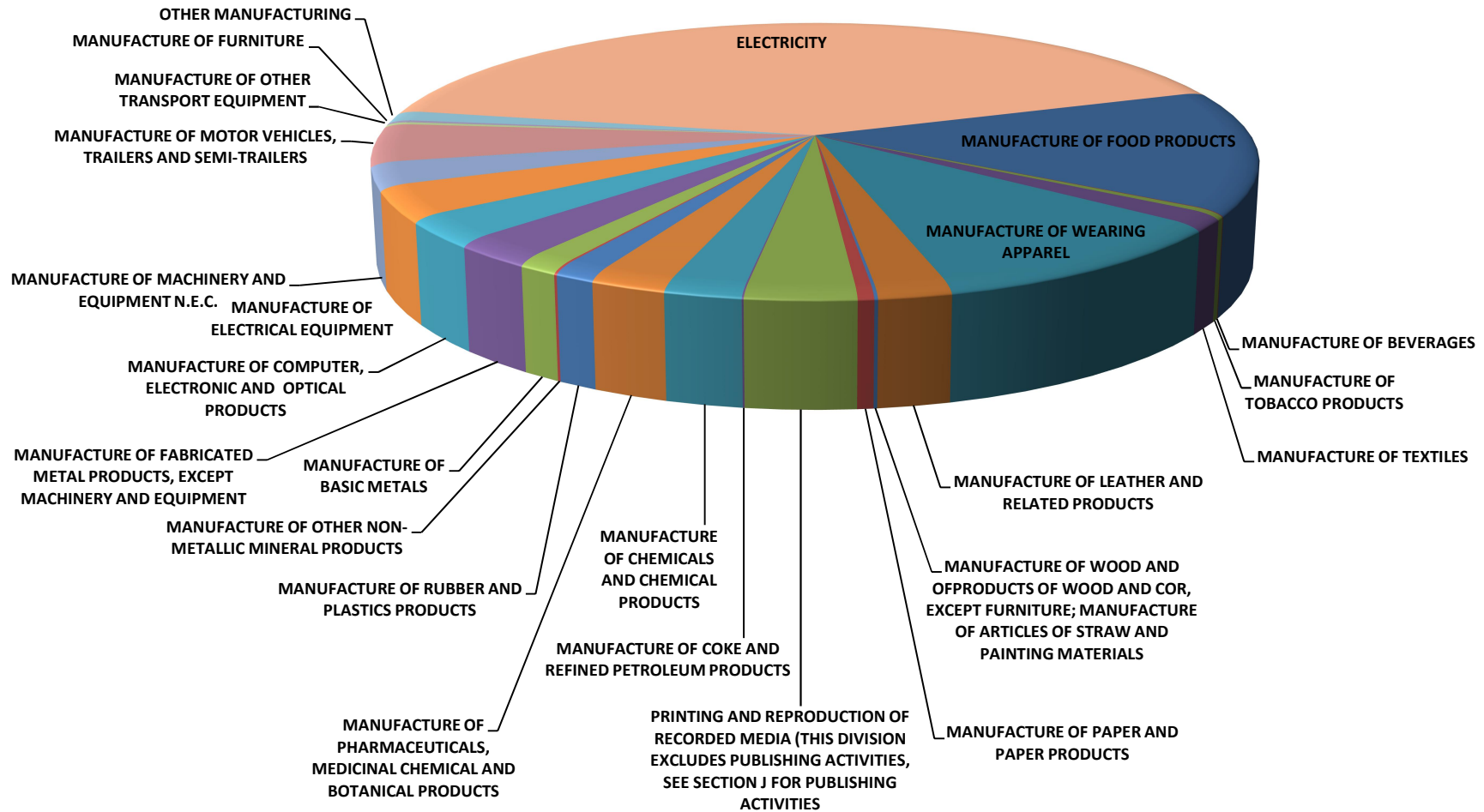


TABLE 2.2: ITEM BASKET WITH WEIGHTS AT NIC 3 DIGIT LEVEL FOR IIP

SL. NO.	NIC 3 DIGIT	NPCMS	NPCMS DESCRIPTION	ITEM WEIGHT
1	101	2111600	MEAT OF GOAT, FRESH OR CHILLED	12.91
2	103	2131200	PEAS, FROZEN	3.12
3	103	2131900	OTHER VEGETABLES AND PULSES FROZEN	1.82
4	106	2311003	WHEAT FLOUR	39.43
5	106	2312004	GRAM FLOUR	23.64
6	107	2142400	CASHEW NUTS, SHELLED	13.57
7	107	2342001	BISCUITS	20.56
8	107	2367000	SUGAR CONFECTIONERY (INCLUDING WHITE CHOCOLATE), NOT CONTAINING COCOA; VEGETABLES, FRUIT, NUTS, FRUIT-PEEL AND OTHER PARTS OF PLANTS, PRESERVED BY SUGAR	28.13
9	110	2441001	BOTTLED MINERAL WATER	0.46
10	120	2501005	TOBACCO, CHEWING (SCENTED OR NOT)	3.33
11	131	2642000	YARN OF MAN-MADE FILAMENTS, MULTIPLE OR CABLED (OTHER THAN SEWING THREAD, HIGH TENACITY YARN OF POLYAMIDES, POLYESTERS OR VISCOSE RAYON), NOT PUT UP FOR RETAIL SALE; MAN-MADE FILAMENT YARN (OTHER THAN SEWING THREAD), PUT UP FOR RETAIL SALE	0.45
12	139	2643014	YARN, POLYESTER	2.37
13	139	2669003	CLOTH FINISHED /PROCESSED, COTTON	3.38
14	139	2822604	WAISTCOATS, KC	2.69
15	139	3552010	YARN RAYON	1.85
16	139	3633005	CLOTH PVC	3.00
17	141	2822302	DRESSES (WOMEN'S OR GIRLS'), KC	29.24
18	141	2824103	GARMENTS, LEATHER	15.56
19	141	2825001	GARMENTS MADE UP OF TEXTILE FABRICS COATED WITH OTHER MATERIALS	57.08
20	143	2821003	SOCKS	0.42
21	152	2931000	WATERPROOF FOOTWEAR, WITH OUTER SOLES AND UPPERS OF RUBBER OR PLASTICS, OTHER THAN FOOTWEAR INCORPORATING A PROTECTIVE METAL TOE-CAP	11.55
22	152	2951000	FOOTWEAR INCORPORATING A PROTECTIVE METAL TOE-CAP, EXCEPT THOSE COVERED IN SUBCLASS 29320	11.69
23	162	3812200	OTHER WOODEN FURNITURE, OF A KIND USED IN OFFICES	0.83
24	162	4299601	FRAME PHOTOGRAPHIC, MIRROR, BASE METAL	0.32
25	170	3212901	COMPUTER STATIONERY	0.74
26	170	3215301	BOXES, CORRUGATED SHEET	3.62
27	170	3215302	CARD BOARD BOXES	0.77
28	181	3229901	BOOKS	5.30
29	181	3262005	PRINTED POSTERS	17.66
30	181	3263001	CALENDARS	2.60
31	181	3269007	PRINTED LABELS	9.37

SL. NO.	NIC 3 DIGIT	NPCMS	NPCMS DESCRIPTION	ITEM WEIGHT
32	192	3338002	GREASE, PETROLEUM ETC.	0.57
33	201	3413930	MENTHOL	14.00
34	201	3414064	VINYL ACETATE, ETHYL VINYL ACETATE	3.74
35	202	3511064	PAINT	1.30
36	202	3533101	AGARBATI	5.58
37	210	2321007	GLUCOSE	10.82
38	210	3525098	OTHER VITAMINS IN TABLET OR INJECTABLE FORM	3.13
39	210	3526010	ANTI INFLAMMATORY PREPARATIONS (KETOROLAC TROMETH)	4.58
40	210	3649002	CAPSULES PLASTIC	5.92
41	221	3626038	NIPPLES / SOOTHER	0.40
42	221	3627006	COMPONENT & PARTS RUBBER	0.98
43	222	3633009	FILM PLASTIC	6.31
44	222	3649005	CONTAINER PLASTIC	2.34
45	222	3694005	CABINET PLASTIC	1.32
46	222	3698000	ELECTRICAL INSULATING FITTINGS OF PLASTICS	1.83
47	239	3732007	TILES & BRICKS INSULATED (NON CERAMIC)	1.00
48	241	4121103	SHEETS, HOT ROLLED	4.85
49	241	4121104	STRIP, HOT ROLLED	4.84
50	242	4151403	COPPER COILS, REFINED	0.45
51	242	4153402	ALUMINIUM CIRCLES ALLOYED	0.92
52	243	4111102	CAST IRON	0.60
53	243	4153403	ALUMINIUM CIRCLES NOT ALLOYED	1.45
54	259	3812102	CABINET IRON / STEEL	4.54
55	259	3870203	FABRICATED METAL PRODUCTS	8.07
56	259	4291104	SANITARY WARE OTHERS OF IRON AND STEEL	3.76
57	259	4295004	ROD, WIRE WELDING	7.31
58	259	4412701	LINK FORGING	3.00
59	261	3870207	OIL COOLERS	0.61
60	261	4613200	PARTS OF ELECTRICAL TRANSFORMERS, STATIC CONVERTERS AND INDUCTORS	1.65
61	261	4654101	CONNECTORS / PLUGS / SOCKETS / HOLDERS-ELECTRIC	2.78
62	264	4733003	PUBLIC ADDRESS EQUIPMENT	24.83
63	271	4621400	BOARDS, CONSOLES, CABINETS AND OTHER BASES, EQUIPPED WITH ELECTRICAL SWITCHING ETC. APPARATUS, FOR ELECTRIC CONTROL OR THE DISTRIBUTION OF ELECTRICITY, FOR A VOLTAGE EXCEEDING 1000	12.38
64	272	4641001	BATTERIES	1.37
65	273	4632003	CABLE, PVC INSULATED	5.40
66	273	4632004	CABLE, RUBBER INSULATED	2.82
67	275	4481701	ELECTRIC HEATERS	5.05

SL. NO.	NIC 3 DIGIT	NPCMS	NPCMS DESCRIPTION	ITEM WEIGHT
68	279	4711001	CAPACITOR METALIZED POLY. FILM	8.85
69	281	4323002	CENTRIFUGAL AIR COMPRESSORS	1.38
70	281	4323003	COMPRESSORS USED IN REFRIGERATOR	3.94
71	281	4324014	VALVES CONTROL	2.09
72	281	4391302	AIR COOLING UNIT	1.52
73	281	4423201	ELECTRO MECHANICAL TOOLS FOR WORKING IN THE HAND	1.29
74	281	4912911	BEARING WHEEL	1.60
75	282	4392102	MACHINERY FOR FILLING, CLOSING, SEALING, CAPSULING OR LABELING BOTTLES, CANS, BOXES, BAGS OR OTHER CONTAINERS; MACHINERY FOR AERATING BEVERAGES	3.11
76	282	4392103	OTHER PACKING OR WRAPPING MACHINERY	1.99
77	282	4419300	POULTRY INCUBATORS AND BROODERS	6.51
78	282	4451302	FLOUR MILL MACHINERY	3.49
79	292	4923100	PARTS AND ACCESSORIES FOR THE GOODS OF SUBCLASS 49210	2.90
80	293	4315106	PARTS OF PETROL ENGINES FOR MOTOR VEHICLES	31.07
81	293	4315400	PARTS FOR THE GOODS OF SUBCLASS 43142, INCLUDING REGULATORS	11.82
82	309	4994100	PARTS AND ACCESSORIES OF MOTORCYCLES AND SIDE-CARS	2.70
83	310	3812105	METAL/STEEL OFFICE FURNITURE OTHERS	2.28
84	321	3824002	JEWELLERY OF GOLD STUDDED WITH PRECIOUS STONE	1.11
85	324	3854003	PLASTIC TOYS	0.09
86	325	4818000	MEDICAL, SURGICAL, DENTAL OR VETERINARY FURNITURE; BARBERS' CHAIRS AND SIMILAR CHAIRS, HAVING ROTATING AS WELL AS BOTH RECLINING AND ELEVATING MOVEMENTS	0.69
87	325	4831103	LENS, OPHTHALMIC	4.31
88	329	3891108	PEN BODY PLASTIC	4.03
89	329	3899901	CANDLES DECORATIVE	1.36
90	351	1710008	ELECTRICITY	413.9
			GRAND TOTAL	1000

XXX

CHAPTER-THREE

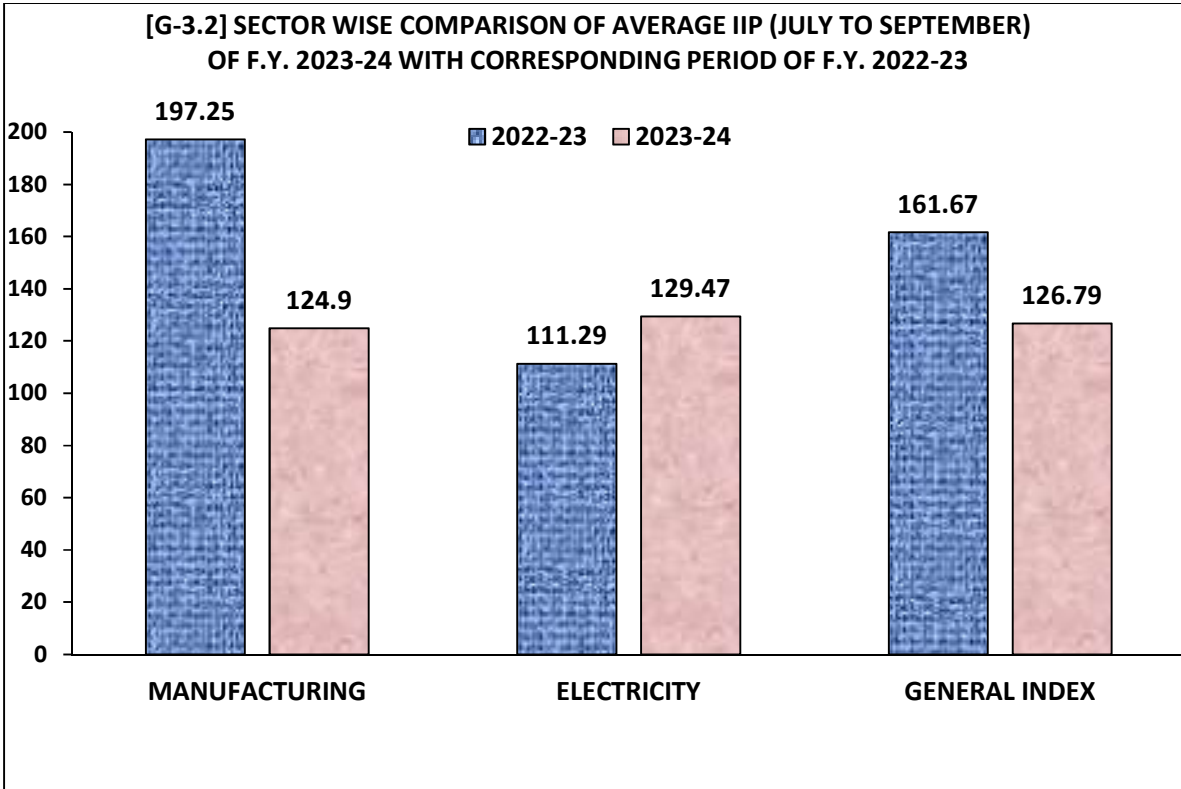
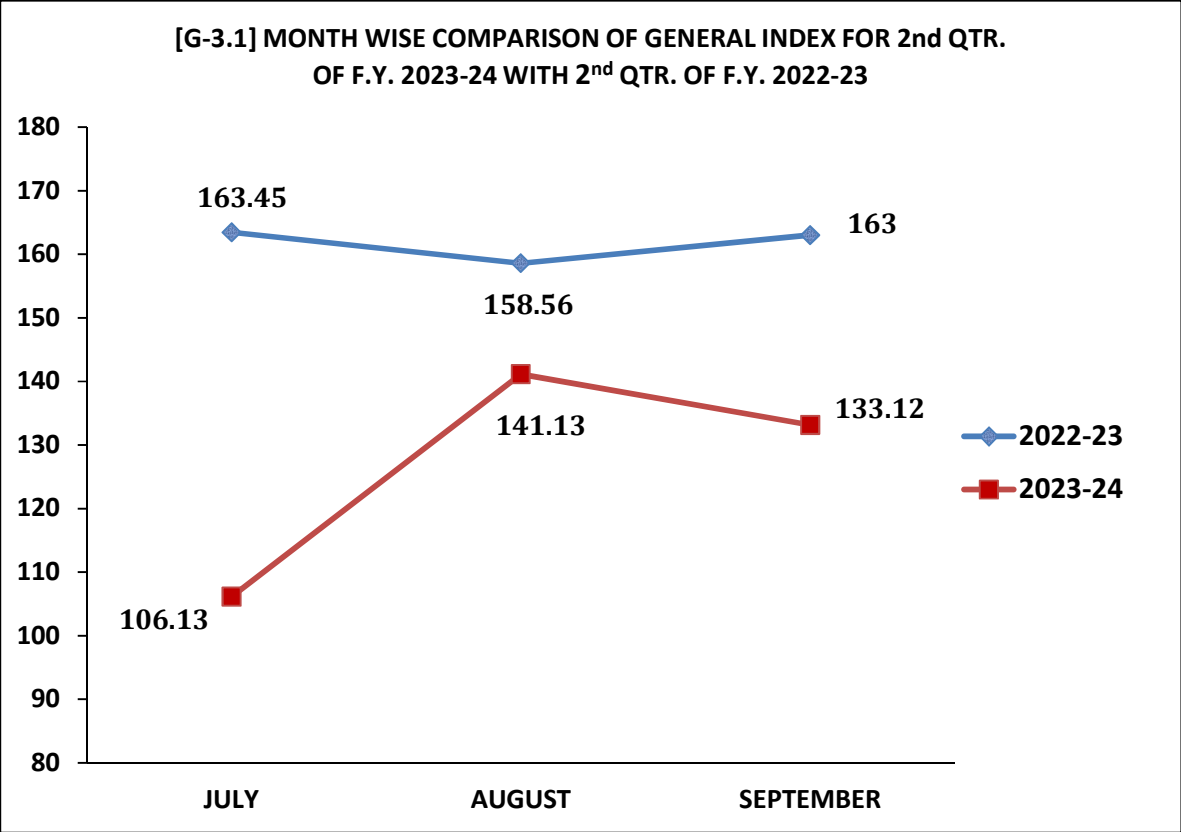
A BRIEF ANALYSIS OF IIP

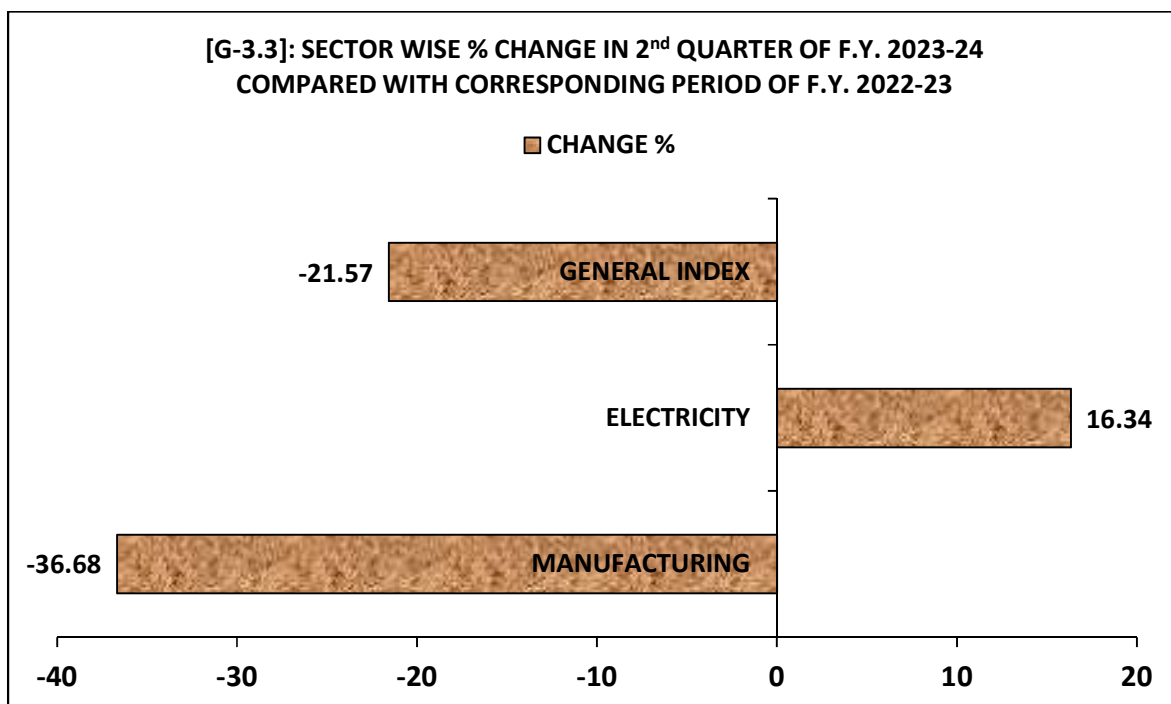
3.1 Directorate of Economics & Statistics, Govt. of NCT of Delhi compiles the Index of Industrial Production (IIP) for Delhi on monthly basis and releases on Annual / Quarterly basis. The base year for the IIP is 2011-12 = 100. IIP is the Short Term Indicator of the trend in Organized Manufacturing Sector. For 2nd Quarter of FY 2023-24, the IIP is compiled on the basis of monthly production data received from 135 Industries comprising of 134 Manufacturing Units and an Electricity Production Unit. For the purpose of compiling IIP, the Industry Sector has been divided into Manufacturing and Electricity Sectors. **58.61%** weight has been assigned to Manufacturing Sector whereas Electricity Sector has been assigned **41.39%** weight. The Manufacturing Sector has been further divided into **23** major Industrial groups at two digit level NIC-2008.

3.2 Although, the IIP had been compiled on monthly basis but in practice it was being released annually/quarterly. Now the index for the 2nd Quarter (July 23 to September 23) of financial year 2023-24 has been compiled and same is presented below:-

TABLE 3.1: SECTOR WISE COMPARISON OF IIP FOR 2nd QTR. (JULY TO SEPTEMBER) OF F.Y. 2023-24 WITH 2nd QTR. OF F.Y. 2022-23						
SECTOR	MANUFACTURING (58.61%)		ELECTRICITY (41.39%)		GENERAL INDEX (100%)	
	2022-23	2023-24(P)	2022-23	2023-24(P)	2022-23	2023-24(P)
MONTH						
JULY	196.05	128.09	117.28	75.04	163.45	106.13
AUGUST	190.19	123.30	113.77	166.37	158.56	141.13
SEPTEMBER	205.50	123.32	102.82	147.00	163.00	133.12
AVERAGE OF THREE MONTHS						
JULY-SEPT	197.25	124.90	111.29	129.47	161.67	126.79
GROWTH OR DECLINE OVER THE CORRESPONDING PERIOD OF PREVIOUS YEAR						
JULY		(-)34.66%		(-)36.02%		(-)35.07%
AUGUST		(-)35.17%		46.23%		(-)10.99%
SEPTEMBER		(-)39.99%		42.97%		(-)18.33%
JULY-SEPT		(-)36.68%		16.34%		(-)21.57%

*(P) = PROVISIONAL DATA





**TABLE 3.2: COMPARISON OF IIP FOR THE 2nd QUARTER (JULY TO SEPTEMBER) OF F.Y. 2023-24
WITH THE CORRESPONDING PERIOD OF 2022-23 (DELHI VS ALL INDIA)**

	MANUFACTURING			ELECTRICITY			GENERAL INDEX		
	JULY-SEPTEMBER			JULY-SEPTEMBER			JULY-SEPTEMBER		
	(2022-23)	(2023-24)	CHANGE%	(2022-23)	(2023-24)	CHANGE%	(2022-23)	(2023-24)	CHANGE%
DELHI	197.25	124.90	(-)36.68	111.29	129.47	16.34	161.67	126.79	(-)21.57
ALL INDIA	133.63	142.27	6.46	189.20	210.13	11.06	133.23	143.30	7.56

ALL INDIA IIP DATA: WEBSITE OF MINISTRY OF STATISTICS AND PROGRAMME IMPLEMENTATION (MOSPI)

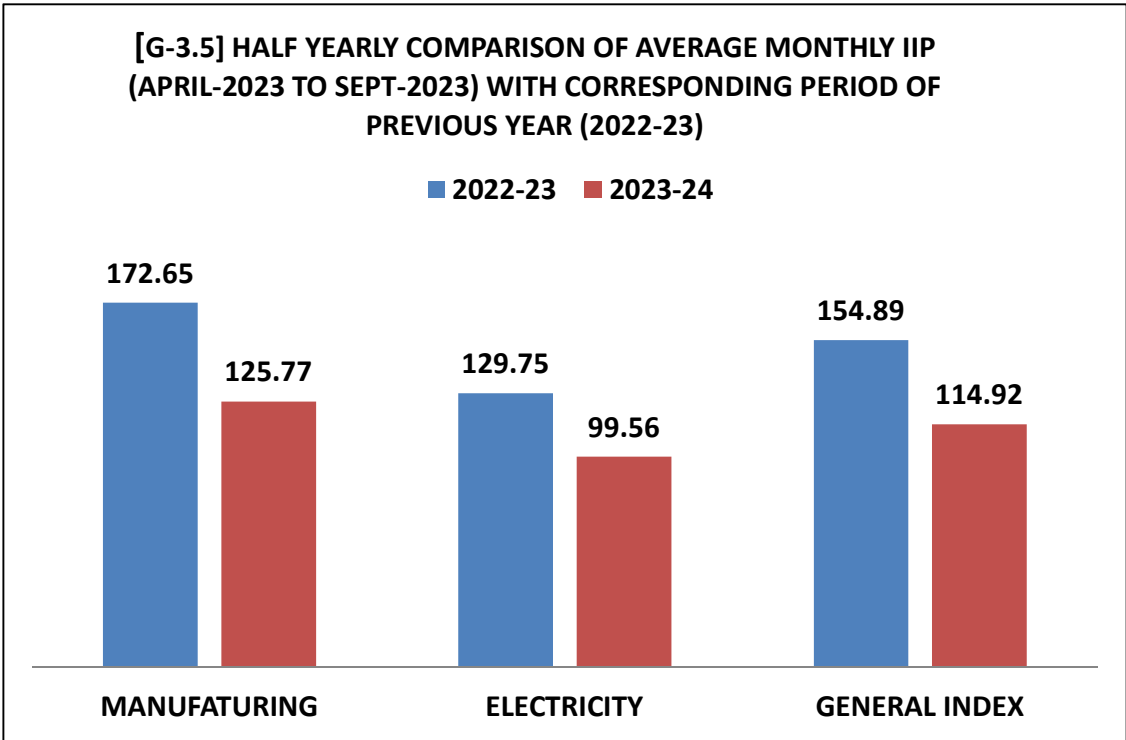
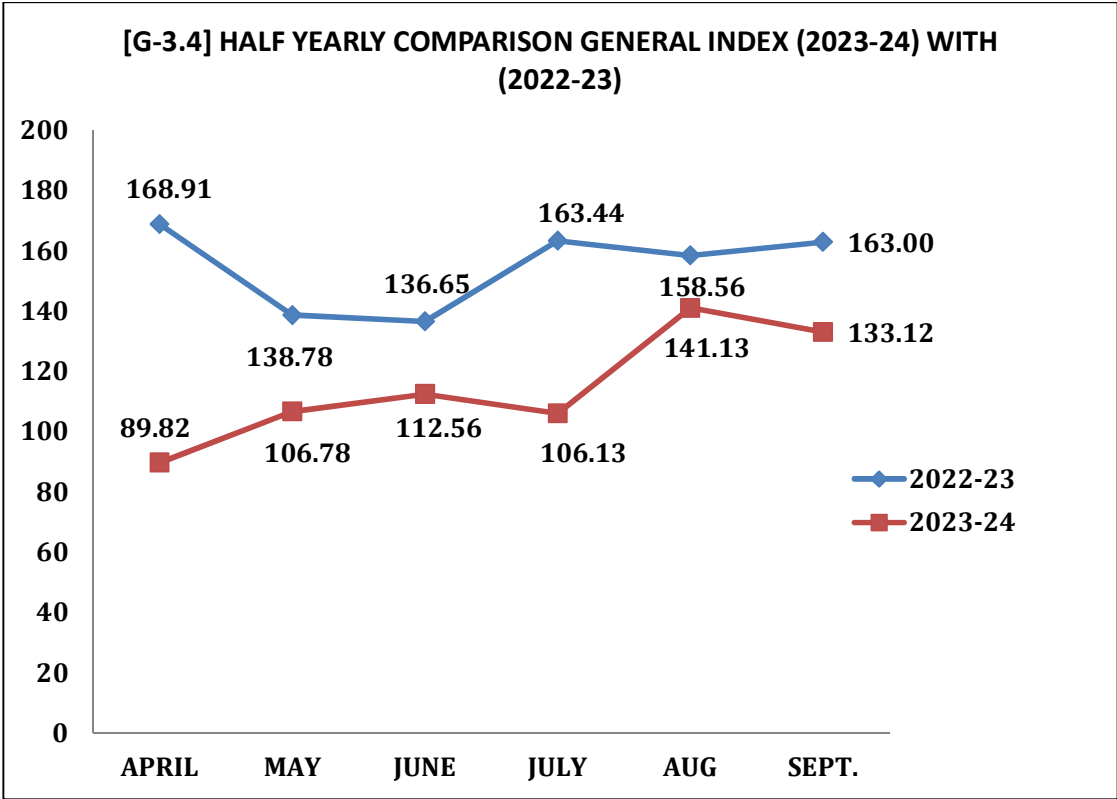
3.3 KEY FINDINGS ON INDEX OF INDUSTRIAL PRODUCTION (IIP) DURING THE 2nd QUARTER JULY TO SEPTEMBER 2023 ARE AS FOLLOWS:-

- The 2nd Quarter General Index of Industrial Production 2023-24 has declined from 161.67 in the corresponding period of previous year 2022-23 to 126.79 indicating a decline of 21.57 % in Delhi as compared to 7.56 % increase in the corresponding period at All India Level.
- The IIP of Manufacturing Sector has declined from 197.25 in the corresponding period of previous year to 124.90 indicating decline of 36.68 % in Delhi as compared to 6.46 % increase in the corresponding period of All India Level.
- The Electricity Sector of Index of Industrial Production has increased from 111.29 in the corresponding period of previous year to 129.47 indicating a growth of 16.34 % in Delhi as compared to 11.06 % increase in the corresponding period at All India Level.

TABLE 3.3: HALF YEARLY COMPARISON OF IIP (APRIL TO SEPT. 2023-24 WITH APRIL TO SEPT. 2022-23)						
SECTOR	MANUFACTURING (58.61%)		ELECTRICITY (41.39%)		GENERAL INDEX (100%)	
MONTH	2022-23	2023-24	2022-23	2023-24	2022-23	2023-24
APRIL(R)	164.44	123.38	175.25	42.29	168.91	89.82
MAY(R)	130.67	131.31	150.27	72.04	138.78	106.78
JUNE(R)	149.03	125.22	119.10	94.64	136.65	112.56
JULY(P)	196.05	128.09	117.28	75.04	163.45	106.13
AUG.(P)	190.19	123.3	113.77	166.37	158.56	141.13
SEPT.(P)	205.50	123.32	102.82	147.00	163.00	133.12
AVERAGE OF SIX MONTHS						
APRIL-SEPT.	172.65	125.77	129.75	99.56	154.89	114.92
GROWTH OR DECLINE OVER THE CORRESPONDING PERIOD OF PREVIOUS YEAR						
APRIL(R)		(-)24.97 %		(-)75.87 %		(-)46.82%
MAY(R)		0.49 %		(-)52.06 %		(-)23.06 %
JUNE(R)		(-)15.98 %		(-)20.54 %		(-)17.63 %
JULY(P)		(-)34.66 %		(-)36.02 %		(-)35.07 %
AUG.(P)		(-)35.17 %		46.23 %		(-)10.99 %
SEPT.(P)		(-)39.99 %		42.97%		(-)18.33 %
APRIL-SEPT.		(-)27.15 %		(-)23.26%		(-)25.80 %

*(R) = REVISED DATA

*(P) = PROVISIONAL DATA



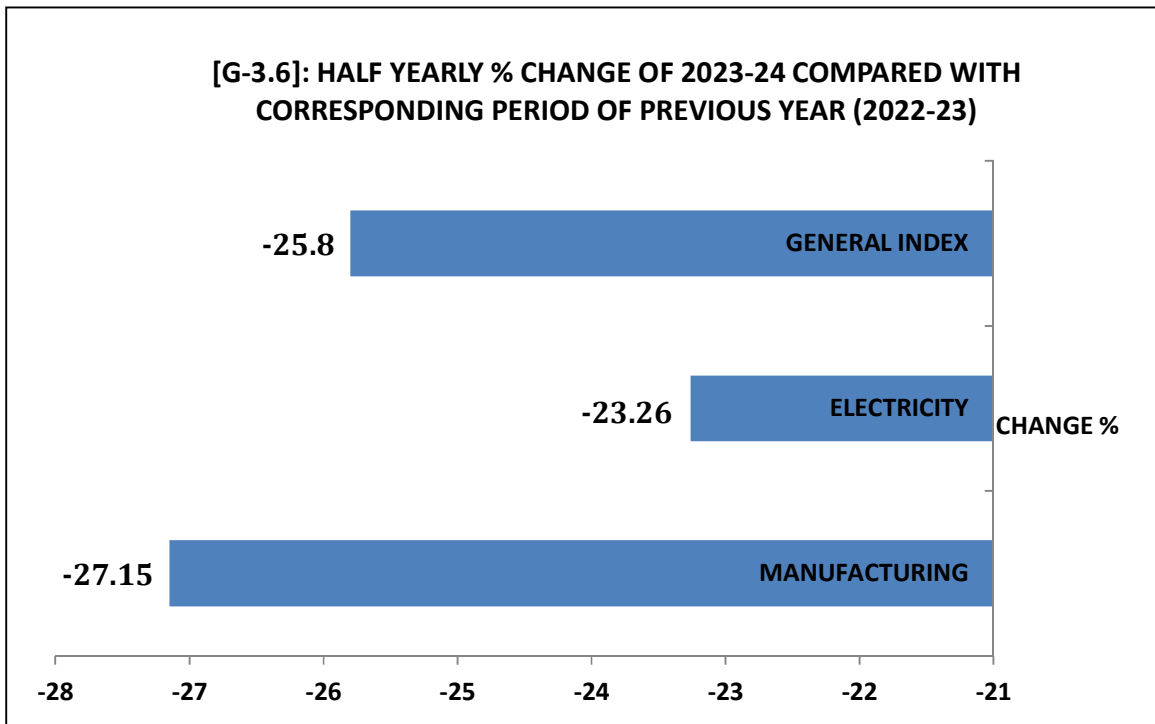


TABLE 3.4: COMPARISON OF HALF YEARLY (APRIL TO SEPT. 2023) WITH THE CORRESPONDING PERIOD OF PREVIOUS YEAR i.e., (2022-23) OF DELHI WITH ALL INDIA INDEX OF INDUSTRIAL PRODUCTION.

	MANUFACTURING			ELECTRICITY			GENERAL INDEX		
	APRIL-SEPT			APRIL-SEPT			APRIL-SEPT		
	(2022-23)	(2023-24)	CHANGE%	(2022-23)	(2023-24)	CHANGE%	(2022-23)	(2023-24)	CHANGE%
DELHI	172.65	125.77	(-)27.15 %	129.75	99.56	(-)23.26 %	154.89	114.92	(-)25.80 %
ALL INDIA	133.98	141.72	5.77 %	193.15	204.92	6.09 %	135.05	143.35	6.15 %

ALL INDIA IIP DATA: WEBSITE OF MINISTRY OF STATISTICS AND PROGRAMME IMPLEMENTATION (MOSPI), GOI

3.4 KEY FINDINGS ON INDEX OF INDUSTRIAL PRODUCTION (IIP) DURING THE HALF YEARLY PERIOD APRIL 2023 TO SEPT. 2023 ARE AS FOLLOWS:-

- The half yearly General Index of Industrial Production 2023-24 has declined from 154.89 in the corresponding period of previous year 2022-23 to 114.92 indicating a decline of 25.80 % in Delhi as compared to 6.15 % increase in the corresponding period at All India Level.
- The IIP of Manufacturing Sector has declined from 172.65 in the corresponding period of previous year to 125.77 indicating decline of 27.15 % in Delhi as compared to 5.77 % increase in the corresponding period of All India Level.
- The Electricity Sector of Index of Industrial Production has declined from 129.75 in the corresponding period of previous year to 99.56 indicating a decline of 23.26 % in Delhi as compared to 6.09 % increase in the corresponding period at All India Level.

SECTOR	2023-24 (1 st QUARTER-REVISED)				2023-24 (2 nd QUARTER-PROVISIONAL)				CHANGE %
	APRIL	MAY	JUNE	(APRIL-JUNE)	JULY	AUG	SEPT	(JULY-SEPT)	
				AVERAGE				AVERAGE	
MANUFACTURING	123.38	131.31	125.22	126.64	128.09	123.30	123.32	124.90	(-)1.37
ELECTRICITY	42.29	72.04	94.64	69.66	75.04	166.37	147.00	129.47	85.87
GENERAL INDEX	89.82	106.78	112.56	103.05	106.13	141.13	133.12	126.79	23.04

3.5 SALIENT FEATURES OF IIP FOR 2nd QUARTER (JULY TO SEPT 2023) OF F.Y. 2023-24 WITH THE 1st QUARTER (APRIL TO JUNE 2023-REVISED) OF DELHI FOR F.Y. 2023-24 ARE AS FOLLOWS:-

- A decline of 1.37 % exhibited in Manufacturing Sector of Delhi for 2nd Quarter 2023-24 (July to Sept 2023-PROVISIONAL) as compared with the 1st Quarter of 2023-24 (April to June 2023-REVISED).
- 85.87% growth was witnessed in Electricity Sector of Delhi for 2nd Quarter 2023-24 (July to Sept 2023-PROVISIONAL) as compared with the 1st Quarter of 2023-24 (April to June 2023-REVISED).
- 23.04 % overall growth was recorded in General Index of Delhi for 2nd quarter 2023-24 (July to Sept 2023-PROVISIONAL) as compared with the 1st Quarter of 2023-24 (April to June 2023-REVISED).

SECTOR	2023-24 (1 ST QUARTER)				2023-24 (2 ND QUARTER)				CHANG E %
	APRIL	MAY	JUNE	APRIL-JUNE	JULY	AUG	SEPT	JULY-SEPT	
				AVERAGE				AVERAGE	
MANUFACTURING	138.8	143.1	141.6	141.17	142.1	143.5	141.2	142.27	0.78
ELECTRICITY	192.3	201.6	205.2	199.70	204	220.5	205.9	210.13	5.22
GENERAL INDEX	140.7	145.6	143.9	143.40	142.7	145.1	142.1	143.30	(-)0.07

- Corresponding decline in General Index in All India IIP was 0.07% whereas Manufacturing and Electricity Sector witnessed growth of 0.78% and 5.22% in All India IIP respectively.

**TABLE 3.7 : INDEX OF INDUSTRIAL PRODUCTION AT 2 DIGIT LEVEL OF NIC 2008
(BASE YEAR 2011-12=100) FOR 2nd QUARTER FOR THE F.Y. 2022-23 AND F.Y. 2023-24**

NIC-2 Digit Code	DESCRIPTION	WEIGHT	2022-23				2023-24				CHANGE %
			JUL.	AUG.	SEPT.	AVRG.	JUL.	AUG.	SEPT.	AVRG.	
10	MANUFACTURE OF FOOD PRODUCTS	143.18	521.07	500.23	558.65	526.65	231.96	232.21	244.81	236.33	(-)55.13%
11	MANUFACTURE OF BEVERAGES	0.46	78.14	71.78	80.47	76.79	69.2	76.52	76.35	74.02	(-)3.61%
12	MANUFACTURE OF TOBACCO PRODUCTS	3.33	0	0	0	0.00	0	0	0	0	0
13	MANUFACTURE OF TEXTILES	13.74	78.32	80.83	87.94	82.36	70.22	70.22	80.89	73.77	(-)10.43%
14	MANUFACTURE OF WEARING APPAREL	102.3	84.58	95.2	92.25	90.68	118.13	111.39	81.26	103.59	14.24%
15	MANUFACTURE OF LEATHER AND RELATED PRODUCTS	23.25	148.21	136.33	143.05	142.53	154.72	133.75	128.18	138.88	(-)2.56%
16	MANUFACTURE OF WOOD AND OF PRODUCTS OF WOOD AND CORK, EXCEPT FURNITURE; MANUFACTURE OF ARTICLES OF STRAW AND PAINTING MATERIALS	1.14	108.05	61.57	258.22	142.61	44.09	55.27	77.42	58.93	(-)58.68%
17	MANUFACTURE OF PAPER AND PAPER PRODUCTS	5.13	132.44	140.07	152.48	141.66	113.61	91.87	108.29	104.59	(-)26.17%
18	PRINTING AND REPRODUCTION OF RECORDED MEDIA	34.93	20.21	28.03	21.26	23.17	16.81	13.49	17.47	15.92	(-)31.28%
19	MANUFACTURE OF COKE AND REFINED PETROLEUM PRODUCTS	0.57	0	0	0	0.00	0	0	0	0	0
20	MANUFACTURE OF CHEMICALS AND CHEMICAL PRODUCTS	24.62	81.22	44.84	49.35	58.47	58.7	85.84	90.09	78.21	33.76%
21	MANUFACTURE OF PHARMACEUTICALS, MEDICINAL CHEMICAL AND BOTANICAL PRODUCTS	24.46	138.25	104.49	113.13	118.62	98.01	65.28	68.33	77.21	(-)34.91%
22	MANUFACTURE OF RUBBER AND PLASTICS PRODUCTS	13.18	101.22	64.88	71.07	79.06	126.71	115.2	112.58	118.16	49.46%
23	MANUFACTURE OF OTHER NON-METALLIC MINERAL PRODUCTS	1	0	0	0	0.00	0	0	0	0	0
24	MANUFACTURE OF BASIC METALS	13.11	227.81	259.67	273.94	253.81	280.13	280.84	270.64	277.2	9.22%
25	MANUFACTURE OF FABRICATED METAL PRODUCTS, EXCEPT MACHINERY AND EQUIPMENT	26.69	95.44	127.98	55.55	92.99	68.23	76.88	56.12	67.08	(-)27.86%
26	MANUFACTURE OF COMPUTER, ELECTRONIC AND OPTICAL PRODUCTS	29.87	76.05	89.04	83.61	82.90	80.6	86	100.99	89.2	7.6%
27	MANUFACTURE OF ELECTRICAL EQUIPMENT	35.87	98.38	82.4	105.03	95.27	77.73	87.94	83.86	83.18	(-)12.69%
28	MANUFACTURE OF MACHINERY AND EQUIPMENT N.E.C.	26.92	147.09	116.44	148.66	137.39	139.1	95.46	129.19	121.25	(-)11.75%
29	MANUFACTURE OF MOTOR VEHICLES, TRAILERS AND SEMI-TRAILERS	45.79	10.51	20.69	9.73	13.64	4.9	3.21	3.65	3.92	(-)71.27%
30	MANUFACTURE OF OTHER TRANSPORT EQUIPMENT	2.7	96.31	115.57	96.31	102.73	134.83	146.39	154.1	145.11	41.25%
31	MANUFACTURE OF FURNITURE	2.28	187.29	162.87	326.07	225.41	281.68	129.21	130.69	180.53	(-)19.91%
32	OTHER MANUFACTURING	11.58	207.77	199.65	252.15	219.86	240.73	208.45	235.49	228.22	3.8%
	MANUFACTURING	586.1	196.05	190.19	205.5	197.25	128.09	123.3	123.32	124.9	(-)36.68%
	ELECTRICITY	413.9	117.28	113.77	102.82	111.29	75.04	166.37	147	129.47	16.34%
	GENERAL INDEX	1000	163.45	158.56	163	161.67	106.13	141.13	133.12	126.79	(-)21.57%

**TABLE 3.7(A) : INDEX OF INDUSTRIAL PRODUCTION AT 2 DIGIT LEVEL OF NIC 2008
(BASE YEAR 2011-12=100) FOR 1st QUARTER FOR THE F.Y. 2022-23 AND F.Y. 2023-24(REVISED)**

NIC-2 Digit Code	DESCRIPTION	WEIGHT	2022-23				2023-24				CHANGE %
			APRIL	MAY	JUNE	AVRG.	APRIL	MAY	JUNE	AVRG.	
10	MANUFACTURE OF FOOD PRODUCTS	143.18	281.05	252.57	333.55	289.06	228.4	246.22	228.06	234.23	(-)18.97%
11	MANUFACTURE OF BEVERAGES	0.46	78.42	81.15	80.11	79.9	77.34	78.38	74.79	76.84	(-)3.83%
12	MANUFACTURE OF TOBACCO PRODUCTS	3.33	0	0	0	0	0	0	0	0	0
13	MANUFACTURE OF TEXTILES	13.74	75.32	85.4	79.19	79.97	101.65	82.41	92.52	92.19	15.28%
14	MANUFACTURE OF WEARING APPAREL	102.3	131.22	91.26	74.39	98.95	120.63	122.52	105.61	116.25	17.48%
15	MANUFACTURE OF LEATHER AND RELATED PRODUCTS	23.25	482.46	132.92	133.18	249.52	110.54	167.21	166.01	147.92	(-)40.72%
16	MANUFACTURE OF WOOD AND OF PRODUCTS OF WOOD AND CORK, EXCEPT FURNITURE; MANUFACTURE OF ARTICLES OF STRAW AND PAINTING MATERIALS	1.14	292.91	241.09	769.55	434.52	28.97	37.48	64.77	43.74	(-)89.93%
17	MANUFACTURE OF PAPER AND PAPER PRODUCTS	5.13	171.61	148.29	131.64	150.51	137.07	136.61	127.57	133.75	(-)11.14%
18	PRINTING AND REPRODUCTION OF RECORDED MEDIA	34.93	22.52	26.39	22.2	23.7	14.45	15.22	11.38	13.68	(-)42.28%
19	MANUFACTURE OF COKE AND REFINED PETROLEUM PRODUCTS	0.57	0	0	0	0	0	0	0	0	0
20	MANUFACTURE OF CHEMICALS AND CHEMICAL PRODUCTS	24.62	85.99	62.59	74.62	74.4	27.56	38.31	53.41	39.76	(-)46.56%
21	MANUFACTURE OF PHARMACEUTICALS, MEDICINAL CHEMICAL AND BOTANICAL PRODUCTS	24.46	71.65	66.15	135.23	91.01	71.13	89.19	95.47	85.26	(-)6.32%
22	MANUFACTURE OF RUBBER AND PLASTICS PRODUCTS	13.18	51.83	61.51	62.71	58.68	89.84	120.19	119.01	109.68	86.91%
23	MANUFACTURE OF OTHER NON-METALLIC MINERAL PRODUCTS	1	0	0	0	0	0	0	0	0	0
24	MANUFACTURE OF BASIC METALS	13.11	260.13	257.33	259.95	259.14	275.55	281.09	267.82	274.82	6.05%
25	MANUFACTURE OF FABRICATED METAL PRODUCTS, EXCEPT MACHINERY AND EQUIPMENT	26.69	75.07	70.17	26.71	57.32	77.62	82.58	80.84	80.35	40.18%
26	MANUFACTURE OF COMPUTER, ELECTRONIC AND OPTICAL PRODUCTS	29.87	103.37	98.6	74.07	92.01	103.06	90.97	96.68	96.9	5.31%
27	MANUFACTURE OF ELECTRICAL EQUIPMENT	35.87	105.35	105.84	97.89	103.03	83.89	81.09	85.61	83.53	(-)18.93%
28	MANUFACTURE OF MACHINERY AND EQUIPMENT N.E.C.	26.92	176.21	125.18	133.68	145.02	104.59	96.31	99.38	100.09	(-)30.98%
29	MANUFACTURE OF MOTOR VEHICLES, TRAILERS AND SEMI-TRAILERS	45.79	78.43	43.53	45.8	55.92	2.15	4.4	3.13	3.22	(-)94.24%
30	MANUFACTURE OF OTHER TRANSPORT EQUIPMENT	2.7	134.83	138.69	134.83	136.12	134.83	119.42	107.87	120.71	(-)11.32%
31	MANUFACTURE OF FURNITURE	2.28	96.53	190.1	317.82	201.49	70.46	93.4	169.47	111.11	(-)44.86%
32	OTHER MANUFACTURING	11.58	230.87	232.9	244.37	236.05	277.82	283.91	285.18	282.3	19.59%
	MANUFACTURING	586.1	164.44	130.67	149.03	148.05	123.38	131.31	125.22	126.64	(-)14.46%
	ELECTRICITY	413.9	175.25	150.27	119.1	148.21	42.29	72.04	94.64	69.66	(-)53.00%
	GENERAL INDEX	1000	168.91	138.78	136.65	148.11	89.82	106.78	112.56	103.05	(-)30.42%

3.5 INDEX OF INDUSTRIAL PRODUCTION AT THE LEVEL OF NIC TWO DIGIT

- In Manufacturing Sector, 07 groups out of 23 groups at NIC-2 digit level were showing positive growth in Index of Industrial Production in the 2nd Qtr. of 2023-24 as compared to 2nd Qtr. of 2022-23.
- 07 groups which are exhibiting considerable increase are **(i)** Manufacture of rubber and plastics products (NIC-22) with weight of (13.18), **(ii)** Manufacture of other transport equipment (NIC-30) with weight of (2.7), **(iii)** Manufacture of chemicals and chemical products (NIC-20) with weight (24.62), **(iv)** Manufacture of wearing apparel (NIC-14) with weight of (102.3), **(v)** Manufacture of basic metals (NIC-24) with weight of (13.11), **(vi)** Manufacture of computer, electronic and optical products (NIC-26) with weight of (29.87) and **(vii)** Other manufacturing (NIC-32) with weight of (11.58) have had an greater impact on the overall IIP of Manufacturing Sector whereas, 13 groups, namely **(i)** Manufacture of motor vehicles, trailers and semi-trailers (NIC-29) with weight (45.79), **(ii)** Manufacture of wood and products of wood and cork, except furniture(NIC-16) with weight (1.14), **(iii)** Manufacture of food products (NIC-10) with weight (143.18), **(iv)** Manufacture of pharmaceuticals, medicinal chemical and botanical products (NIC-21) with weight (24.46), **(v)** Printing and reproduction of recorded media(NIC-18) with weight(34.93), **(vi)** Manufacture of fabricated metal products, except machinery and equipment (NIC-25) with weight of (26.69), **(vii)** Manufacture of paper and paper products (NIC-17) with weight (5.13), **(viii)** Manufacture of furniture (NIC-31) with weight (2.28), **(ix)** Manufacture of electrical equipment (NIC-27) with weight (35.87), **(x)** Manufacture of machinery and equipment n. e. c. (NIC-28) with weight (26.92), **(xi)** Manufacture of textiles (NIC-13) with weight of (13.74), **(xii)** Manufacture of beverages (NIC-11) with weight (0.46), **(xiii)** Manufacture of leather and related products (NIC-15) with weight (23.25) have a negative contribution in IIP of 71.27%, 58.68%, 55.13%, 34.91%, 31.28%, 27.86%, 26.17%, 19.91%, 12.69%, 11.75%, 10.43%, 3.61% and 2.56% respectively during the 2nd Qtr. of F.Y. 2023-24 as compared to 2nd Qtr. of F.Y. 2022-23.
- Some of Factories / Establishments are either closed / shifted or recorded Zero production in 2nd Quarter of F.Y. 2023-24. Three such NIC groups (at 2-digit Level) are found namely, **(i)** Manufacture of Tobacco Products (NIC-12), **(ii)** Manufacture of Coke and Refined Petroleum Products (NIC-19) and **(iii)** Manufacture of other Non-Metallic Mineral Products (NIC-23).

XXX

CHAPTER – IV

USE BASED INDEX OF INDUSTRIAL PRODUCTION

Different Industries have been classified on the basis of uses of items produced by these industries to capture the performance of different industrial groups. On the analogy of the use based classification adopted by N.S.O., item basket of production has been classified into four main groups. These groups consist of Primary goods, Capital goods, Intermediate goods and Consumer goods. Consumer goods are further sub-divided into Consumer durable goods and Consumer non-durable goods. Use based monthly Index of Industrial Production provides the information regarding the performance of above mentioned Industries which are classified according to their product usage.

Weighting diagram for use based categories reveals that Primary goods Industry is predominant in the Industrial production of NCT of Delhi and covers **43.22%** of total production, followed by consumer goods of **38.37%** with a share of **19.90%** for consumer non-durable goods and **18.47%** for consumer durable goods. Share of Capital goods and Intermediary goods Industries are **16.35%** and **2.06%** respectively when weights are allocated on the basis of their productions in the base year.

4.1 IIP AS PER USE BASED CLASSIFICATION OF ITEMS

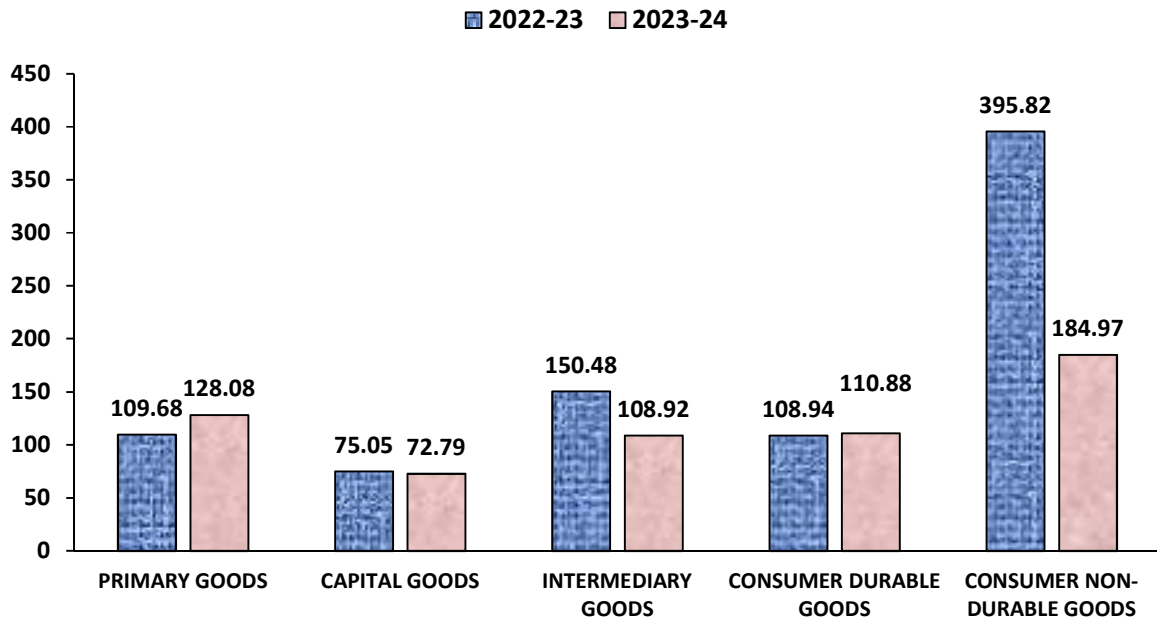
Different Industries have been classified on the basis of uses of items produced by these Industries to capture the performance of different Industrial groups. On the analogy of the use based classification adopted by MoSPI (National Statistical Office), Item Basket of Production has been classified into Four Main groups. These groups consist of Primary goods, Capital goods, Intermediate goods and Consumer goods. Consumer goods are

further, sub-divided into Consumer Durable goods and Consumer Non-durable goods. Use based monthly Index of Industrial Production provides the information regarding the performance of above mentioned Industries which are classified according to their Product usage.

Detail of Index of Industrial Production with the Use-Based classification is depicted in **Table 4.1**. It is evident that in the 2nd Quarter of F.Y. 2023-24, groups i.e. Primary Goods and Consumer Durable Goods have exhibited a growth in production Index by 16.78% and 1.78%. On the other hand, Capital Goods, Intermediary Goods, and Consumer Non-durables Goods have exhibited a decline in production Index by 3.01%, 27.62% and 53.27% respectively from the corresponding period of previous year, i.e. 2022-23.

TABLE 4.1: USE BASED CLASSIFICATION OF CATEGORY WISE COMPARISON OF IIP 2nd QTR. (2023-24) WITH CORRESPONDING PERIOD OF PREVIOUS YEAR 2022-23.										
CATEGORY	WEIGHT	USED BASE INDEX(I) * 100								CHANGE %
		2022-23 (2nd QUARTER)				2023-24 (2nd QUARTER)				
		JULY	AUG	SEPT	AVERAGE	JULY	AUG	SEPT	AVERAGE	
PRIMARY GOODS	432.21	116.76	111.35	100.94	109.68	74.95	163.89	145.41	128.08	16.78
CAPITAL GOODS	163.48	72.81	78.96	73.39	75.05	72.82	73.99	71.56	72.79	(-)3.01
INTERMEDIARY GOODS	20.59	168.08	127.88	155.50	150.48	134.54	73.54	118.68	108.92	(-)27.62
CONSUMER DURABLE GOODS	184.7	104.61	110.81	111.39	108.94	121.24	112.11	99.28	110.88	1.78
CONSUMER NON-DURABLE GOODS	199.02	393.42	373.97	420.06	395.82	184.27	180.76	189.89	184.97	(-)53.27
OVERALL	1000	163.45	158.56	163.00	161.67	106.13	141.13	133.12	126.79	(-)21.57

[G-4.1] USE-BASED CLASSIFICATION OF CATEGORY WISE COMPARISON OF IIP (JULY-SEPTEMBER) OF F.Y. 2023-24 WITH CORRESPONDING PERIOD OF F.Y. 2022-23



[G-4.2] PERCENTAGE CHANGE IN USE-BASED CLASSIFICATION OF CATEGORIES IN 2nd QUARTER OF 2023-24 WITH CORRESPONDING PERIOD OF PREVIOUS YEAR 2022-23

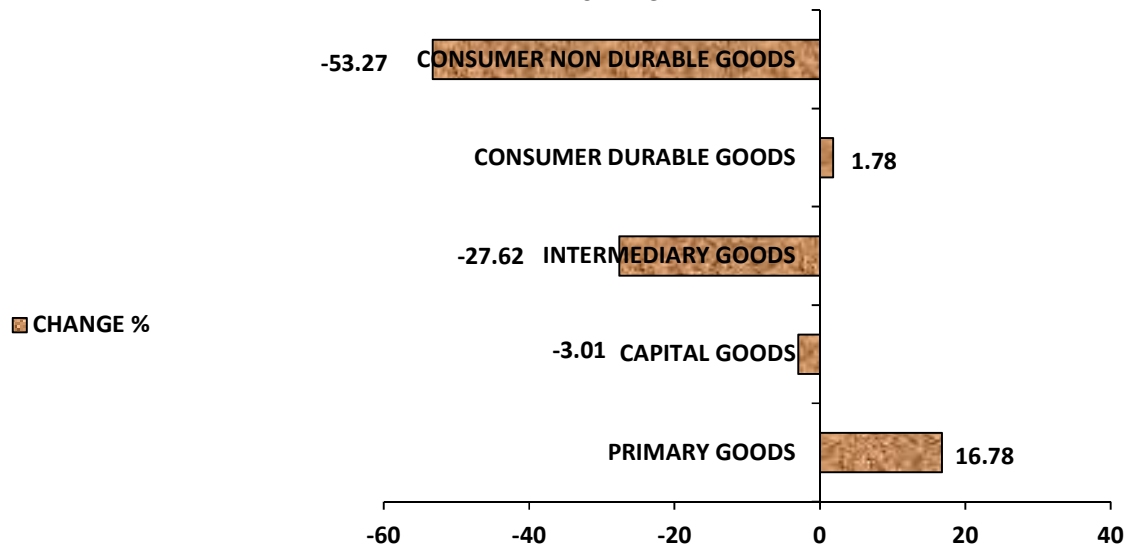


TABLE 4.2: USE-BASED CLASSIFICATION OF CATEGORY WISE COMPARISON OF IIP 2nd QTR. (JULY TO SEPTEMBER) OF F.Y.2023-24 WITH 1st QTR. (APRIL TO JUNE-REVISED) OF F.Y. 2023-24

CATEGORY	WEIGHT	USED BASE INDEX(I) * 100								
		2023-24 (1 st QUARTER-REVISED)				2023-24 (2 nd QUARTER-PROVISIONAL)				CHANGE %
		APRIL	MAY	JUNE	AVERAGE	JULY	AUG	SEPT	AVERAGE	
PRIMARY GOODS	432.21	41.92	70.98	93.51	68.81	74.95	163.89	145.41	128.08	86.14
CAPITAL GOODS	163.48	76.31	76.12	77.63	76.69	72.82	73.99	71.56	72.79	(-)5.09
INTERMEDIARY GOODS	20.59	106.7	88.21	81.47	92.13	134.54	73.54	118.68	108.92	18.22
CONSUMER DURABLE GOODS	184.70	117.32	127.68	117.25	120.75	121.24	112.11	99.28	110.88	(-)8.17
CONSUMER NON-DURABLE GOODS	199.02	177.66	192.22	181.51	183.79	184.27	180.76	189.89	184.97	0.64
OVERALL	1000	89.82	106.78	112.56	103.05	106.13	141.13	133.12	126.79	23.04

Index of Industrial Production with the Use-based classification is depicted in **Table 4.2**. It is evident that in the 2nd Quarter of F.Y. 2023-24, groups are Primary Goods, Intermediary Goods and Consumer Non-durables Goods have exhibited a growth in production Index by 86.14%, 18.22% and 0.64%. On the other hand, Capital Goods and Consumer Durable Goods have exhibited a decline in production Index by 5.09% and 8.17% respectively from the 1st Quarter (Revised) of financial year, i.e. 2023-24.

XXX

ANNEXURE

**TABLE – 1 : PROVISIONAL INDEX NUMBER AT 3- DIGIT LEVEL OF NIC 2008 FOR HALF YEARLY 2023-24
(BASE YEAR 2011-12)**

NIC 3	DESCRIPTION	WEIGHT	AVERAGE
101	PROCESSING AND PRESERVING OF MEAT	12.91	21.72
103	PROCESSING AND PRESERVING OF FRUIT AND VEGETABLES	4.93	269.05
106	MANUFACTURE OF GRAIN MILL PRODUCTS, STARCHES AND STARCH PRODUCTS	63.06	89.92
107	MANUFACTURE OF OTHER FOOD PRODUCTS	62.27	424.11
110	MANUFACTURE OF BEVERAGES	0.46	75.43
120	MANUFACTURE OF TOBACCO PRODUCTS	3.33	0.00
131	SPINNING, WEAVING AND FINISHING OF TEXTILES	0.45	0.00
139	MANUFACTURE OF OTHER TEXTILES	13.29	85.80
141	MANUFACTURE OF WEARING APPAREL, EXCEPT FUR APPAREL	101.87	110.38
143	MANUFACTURE OF KNITTED AND CROCHETED APPAREL	0.42	0.00
152	MANUFACTURE OF FOOTWEAR	23.25	143.40
162	MANUFACTURE OF PRODUCTS OF WOOD, CORK, STRAW AND PLAITING MATERIALS	1.14	51.34
170	MANUFACTURE OF PAPER AND PAPER PRODUCTS	5.13	119.17
181	PRINTING AND SERVICE ACTIVITIES RELATED TO PRINTING	34.93	14.80
192	MANUFACTURE OF REFINED PETROLEUM PRODUCTS	0.57	0.00
201	MANUFACTURE OF BASIC CHEMICALS, FERTILIZER AND NITROGEN COMPOUNDS, PLASTICS AND SYNTHETIC RUBBER IN PRIMARY FORMS	17.74	75.47
202	MANUFACTURE OF OTHER CHEMICAL PRODUCTS	6.88	16.54
210	MANUFACTURE OF PHARMACEUTICALS, MEDICINAL CHEMICAL AND BOTANICAL PRODUCTS	24.46	81.24
221	MANUFACTURE OF RUBBER PRODUCTS	1.38	196.77
222	MANUFACTURE OF PLASTICS PRODUCTS	11.80	104.24
239	MANUFACTURE OF NON-METALLIC MINERAL PRODUCTS N.E.C.	1.00	0.00
241	MANUFACTURE OF BASIC IRON AND STEEL	9.69	281.73
242	MANUFACTURE OF BASIC PRECIOUS AND OTHER NON-FERROUS METALS	1.37	597.85
243	CASTING OF METALS	2.05	33.32
259	MANUFACTURE OF OTHER FABRICATED METAL PRODUCTS; METALWORKING SERVICE ACTIVITIES	26.69	73.72
261	MANUFACTURE OF ELECTRONIC COMPONENTS	5.04	24.94
264	MANUFACTURE OF CONSUMER ELECTRONICS	24.83	106.88
271	MANUFACTURE OF ELECTRIC MOTORS, GENERATORS, TRANSFORMERS AND ELECTRICITY DISTRIBUTION AND CONTROL APPARATUS	12.38	0.00
272	MANUFACTURE OF BATTERIES AND ACCUMULATORS	1.37	0.00
273	MANUFACTURE OF WIRING AND WIRING DEVICES	8.22	14.60
275	MANUFACTURE OF DOMESTIC APPLIANCES	5.05	246.19
279	MANUFACTURE OF OTHER ELECTRICAL EQUIPMENT	8.85	183.82
281	MANUFACTURE OF GENERAL PURPOSE MACHINERY	11.83	143.66
282	MANUFACTURE OF SPECIAL-PURPOSE MACHINERY	15.09	84.83
292	MANUFACTURE OF BODIES (COACHWORK) FOR MOTOR VEHICLES; MANUFACTURE OF TRAILERS AND SEMI-TRAILERS	2.90	56.45
293	MANUFACTURE OF PARTS AND ACCESSORIES FOR MOTOR VEHICLES	42.89	0.00
309	MANUFACTURE OF TRANSPORT EQUIPMENT N.E.C.	2.70	132.91
310	MANUFACTURE OF FURNITURE	2.28	145.82
321	MANUFACTURE OF JEWELLERY, BIJOUTERIE AND RELATED ARTICLES	1.11	45.32
324	MANUFACTURE OF GAMES AND TOYS	0.09	0.00
325	MANUFACTURE OF MEDICAL AND DENTAL INSTRUMENTS AND SUPPLIES	5.00	473.98
329	OTHER MANUFACTURING N.E.C.	5.38	99.68
351	ELECTRIC POWER GENERATION, TRANSMISSION AND DISTRIBUTION	413.90	99.57
	MANUFACTURING	586.10	125.77
	GENERAL INDEX OVERALL	1000	114.92

**TABLE – 2 : REVISED 1ST QUARTER INDEX NUMBER AT 2- DIGIT LEVEL OF NIC 2008 FOR THE YEAR 2022-23
(BASE YEAR 2011-12)**

NIC 2	DESCRIPTION	WEIGHT	AVERAGE
10	MANUFACTURE OF FOOD PRODUCTS	143.18	234.23
11	MANUFACTURE OF BEVERAGES	0.46	76.84
12	MANUFACTURE OF TOBACCO PRODUCTS	3.33	0
13	MANUFACTURE OF TEXTILES	13.74	92.19
14	MANUFACTURE OF WEARING APPAREL	102.3	116.25
15	MANUFACTURE OF LEATHER AND RELATED PRODUCTS	23.25	147.92
16	MANUFACTURE OF WOOD AND OF PRODUCTS OF WOOD AND CORK, EXCEPT FURNITURE; MANUFACTURE OF ARTICLES OF STRAW AND PAINTING MATERIALS	1.14	43.74
17	MANUFACTURE OF PAPER AND PAPER PRODUCTS	5.13	133.75
18	PRINTING AND REPRODUCTION OF RECORDED MEDIA (THIS DIVISION EXCLUDES PUBLISHING ACTIVITIES, SEE SECTION J FOR PUBLISHING ACTIVITIES)	34.93	13.68
19	MANUFACTURE OF COKE AND REFINED PETROLEUM PRODUCTS	0.57	0
20	MANUFACTURE OF CHEMICALS AND CHEMICAL PRODUCTS	24.62	39.76
21	MANUFACTURE OF PHARMACEUTICALS, MEDICINAL CHEMICAL AND BOTANICAL PRODUCTS	24.46	85.26
22	MANUFACTURE OF RUBBER AND PLASTICS PRODUCTS	13.18	109.68
23	MANUFACTURE OF OTHER NON-METALLIC MINERAL PRODUCTS	1	0
24	MANUFACTURE OF BASIC METALS	13.11	274.82
25	MANUFACTURE OF FABRICATED METAL PRODUCTS, EXCEPT MACHINERY AND EQUIPMENT	26.69	80.35
26	MANUFACTURE OF COMPUTER, ELECTRONIC AND OPTICAL PRODUCTS	29.87	96.9
27	MANUFACTURE OF ELECTRICAL EQUIPMENT	35.87	83.53
28	MANUFACTURE OF MACHINERY AND EQUIPMENT N.E.C.	26.92	100.09
29	MANUFACTURE OF MOTOR VEHICLES, TRAILERS AND SEMI-TRAILERS	45.79	3.22
30	MANUFACTURE OF OTHER TRANSPORT EQUIPMENT	2.7	120.71
31	MANUFACTURE OF FURNITURE	2.28	111.11
32	OTHER MANUFACTURING	11.58	282.3
35	ELECTRICITY	413.9	69.66
	MANUFACTURING	586.10	126.64
	GENERAL INDEX	1000	103.05

TABLE -3: PROVISIONAL 2ND QUARTER INDEX NUMBER AT 2- DIGIT LEVEL OF NIC 2008 FOR THE YEAR 2023-24 (BASE YEAR 2011-12)

NIC 2	DESCRIPTION	WEIGHT	AVERAGE
10	MANUFACTURE OF FOOD PRODUCTS	143.18	236.33
11	MANUFACTURE OF BEVERAGES	0.46	74.02
12	MANUFACTURE OF TOBACCO PRODUCTS	3.33	0
13	MANUFACTURE OF TEXTILES	13.74	73.77
14	MANUFACTURE OF WEARING APPAREL	102.30	103.59
15	MANUFACTURE OF LEATHER AND RELATED PRODUCTS	23.25	138.88
16	MANUFACTURE OF WOOD AND OF PRODUCTS OF WOOD AND CORK, EXCEPT FURNITURE; MANUFACTURE OF ARTICLES OF STRAW AND PAINTING MATERIALS	1.14	58.93
17	MANUFACTURE OF PAPER AND PAPER PRODUCTS	5.13	104.59
18	PRINTING AND REPRODUCTION OF RECORDED MEDIA (THIS DIVISION EXCLUDES PUBLISHING ACTIVITIES, SEE SECTION J FOR PUBLISHING ACTIVITIES)	34.93	15.92
19	MANUFACTURE OF COKE AND REFINED PETROLEUM PRODUCTS	0.57	0
20	MANUFACTURE OF CHEMICALS AND CHEMICAL PRODUCTS	24.62	78.21
21	MANUFACTURE OF PHARMACEUTICALS, MEDICINAL CHEMICAL AND BOTANICAL PRODUCTS	24.46	77.21
22	MANUFACTURE OF RUBBER AND PLASTICS PRODUCTS	13.18	118.16
23	MANUFACTURE OF OTHER NON-METALLIC MINERAL PRODUCTS	1.00	0
24	MANUFACTURE OF BASIC METALS	13.11	277.2
25	MANUFACTURE OF FABRICATED METAL PRODUCTS, EXCEPT MACHINERY AND EQUIPMENT	26.69	67.08
26	MANUFACTURE OF COMPUTER, ELECTRONIC AND OPTICAL PRODUCTS	29.87	89.2
27	MANUFACTURE OF ELECTRICAL EQUIPMENT	35.87	83.18
28	MANUFACTURE OF MACHINERY AND EQUIPMENT N.E.C.	26.92	121.25
29	MANUFACTURE OF MOTOR VEHICLES, TRAILERS AND SEMI-TRAILERS	45.79	3.92
30	MANUFACTURE OF OTHER TRANSPORT EQUIPMENT	2.70	145.11
31	MANUFACTURE OF FURNITURE	2.28	180.53
32	OTHER MANUFACTURING	11.58	228.22
35	ELECTRICITY	413.90	129.47
	MANUFACTURING	586.10	124.9
	GENERAL INDEX	1000.00	126.79

**TABLE 4: REVISED IIP 1ST QUARTER FOR THE YEAR 2023-24 AT NIC-3 DIGIT LEVEL 2008
(BASE YEAR 2011-12)**

NIC 3	DESCRIPTION	WEIGHT	AVERAGE
101	PROCESSING AND PRESERVING OF MEAT	12.91	20.25
103	PROCESSING AND PRESERVING OF FRUIT AND VEGETABLES	4.93	153.37
106	MANUFACTURE OF GRAIN MILL PRODUCTS, STARCHES AND STARCH PRODUCTS	63.06	91.31
107	MANUFACTURE OF OTHER FOOD PRODUCTS	62.27	429.75
110	MANUFACTURE OF BEVERAGES	0.46	76.84
120	MANUFACTURE OF TOBACCO PRODUCTS	3.33	0.00
131	SPINNING, WEAVING AND FINISHING OF TEXTILES	0.45	0.00
139	MANUFACTURE OF OTHER TEXTILES	13.29	95.32
141	MANUFACTURE OF WEARING APPAREL, EXCEPT FUR APPAREL	101.87	116.74
143	MANUFACTURE OF KNITTED AND CROCHETED APPAREL	0.42	0.00
152	MANUFACTURE OF FOOTWEAR	23.25	147.92
162	MANUFACTURE OF PRODUCTS OF WOOD, CORK, STRAW AND PLAITING MATERIALS	1.14	43.74
170	MANUFACTURE OF PAPER AND PAPER PRODUCTS	5.13	133.75
181	PRINTING AND SERVICE ACTIVITIES RELATED TO PRINTING	34.93	13.68
192	MANUFACTURE OF REFINED PETROLEUM PRODUCTS	0.57	0.00
201	MANUFACTURE OF BASIC CHEMICALS, FERTILIZER AND NITROGEN COMPOUNDS, PLASTICS AND SYNTHETIC RUBBER IN PRIMARY FORMS	17.74	51.16
202	MANUFACTURE OF OTHER CHEMICAL PRODUCTS	6.88	10.40
210	MANUFACTURE OF PHARMACEUTICALS, MEDICINAL CHEMICAL AND BOTANICAL PRODUCTS	24.46	85.26
221	MANUFACTURE OF RUBBER PRODUCTS	1.38	200.55
222	MANUFACTURE OF PLASTICS PRODUCTS	11.80	99.05
239	MANUFACTURE OF NON-METALLIC MINERAL PRODUCTS N.E.C.	1.00	0.00
241	MANUFACTURE OF BASIC IRON AND STEEL	9.69	274.20
242	MANUFACTURE OF BASIC PRECIOUS AND OTHER NON-FERROUS METALS	1.37	629.89
243	CASTING OF METALS	2.05	39.86
259	MANUFACTURE OF OTHER FABRICATED METAL PRODUCTS; METALWORKING SERVICE ACTIVITIES	26.69	80.35
261	MANUFACTURE OF ELECTRONIC COMPONENTS	5.04	29.21
264	MANUFACTURE OF CONSUMER ELECTRONICS	24.83	110.65
271	MANUFACTURE OF ELECTRIC MOTORS, GENERATORS, TRANSFORMERS AND ELECTRICITY DISTRIBUTION AND CONTROL APPARATUS	12.38	0.00
272	MANUFACTURE OF BATTERIES AND ACCUMULATORS	1.37	0.00
273	MANUFACTURE OF WIRING AND WIRING DEVICES	8.22	28.05
275	MANUFACTURE OF DOMESTIC APPLIANCES	5.05	188.40
279	MANUFACTURE OF OTHER ELECTRICAL EQUIPMENT	8.85	204.98
281	MANUFACTURE OF GENERAL PURPOSE MACHINERY	11.83	124.59
282	MANUFACTURE OF SPECIAL-PURPOSE MACHINERY	15.09	80.90
292	MANUFACTURE OF BODIES (COACHWORK) FOR MOTOR VEHICLES; MANUFACTURE OF TRAILERS AND SEMI-TRAILERS	2.90	50.98
293	MANUFACTURE OF PARTS AND ACCESSORIES FOR MOTOR VEHICLES	42.89	0.00
309	MANUFACTURE OF TRANSPORT EQUIPMENT N.E.C.	2.70	120.71
310	MANUFACTURE OF FURNITURE	2.28	111.11
321	MANUFACTURE OF JEWELLERY, BIJOUTERIE AND RELATED ARTICLES	1.11	38.28
324	MANUFACTURE OF GAMES AND TOYS	0.09	0.00
325	MANUFACTURE OF MEDICAL AND DENTAL INSTRUMENTS AND SUPPLIES	5.00	544.93
329	OTHER MANUFACTURING N.E.C.	5.38	93.41
351	ELECTRIC POWER GENERATION, TRANSMISSION AND DISTRIBUTION	413.90	69.66
	MANUFACTURING	586.10	126.64
	GENERAL INDEX OVERALL	1000.00	103.05

**TABLE 5: IIP PROVISINAL 2ND QUARTER FOR THE YEAR 2022-23 AT NIC-3 DIGIT LEVEL 2008
(BASE YEAR 2011-12)**

NIC 3	DESCRIPTION	WEIGHT	AVERAGE
101	Processing and preserving of meat	12.91	23.18
103	Processing and preserving of fruit and vegetables	4.93	384.72
106	Manufacture of grain mill products, starches and starch products	63.06	88.53
107	Manufacture of other food products	62.27	418.46
110	Manufacture of beverages	0.46	74.02
120	Manufacture of tobacco products	3.33	0.00
131	Spinning, weaving and finishing of textiles	0.45	0.00
139	Manufacture of other textiles	13.29	76.28
141	Manufacture of wearing apparel, except fur apparel	101.87	104.02
143	Manufacture of knitted and crocheted apparel	0.42	0.00
152	Manufacture of footwear	23.25	138.88
162	Manufacture of products of wood, cork, straw and plaiting materials	1.14	58.93
170	Manufacture of paper and paper products	5.13	104.59
181	Printing and service activities related to printing	34.93	15.92
192	Manufacture of refined petroleum products	0.57	0.00
201	Manufacture of basic chemicals, fertilizer and nitrogen compounds, plastics and synthetic rubber in primary forms	17.74	99.77
202	Manufacture of other chemical products	6.88	22.67
210	Manufacture of pharmaceuticals, medicinal chemical and botanical products	24.46	77.21
221	Manufacture of rubber products	1.38	192.98
222	Manufacture of plastics products	11.80	109.42
239	Manufacture of non-metallic mineral products n.e.c.	1.00	0.00
241	Manufacture of basic iron and steel	9.69	289.25
242	Manufacture of basic precious and other non-ferrous metals	1.37	565.80
243	Casting of metals	2.05	26.77
259	Manufacture of other fabricated metal products; metalworking service activities	26.69	67.08
261	Manufacture of electronic components	5.04	20.67
264	Manufacture of consumer electronics	24.83	103.11
271	Manufacture of electric motors, generators, transformers and electricity distribution and control apparatus	12.38	0.00
272	Manufacture of batteries and accumulators	1.37	0.00
273	Manufacture of wiring and wiring devices	8.22	1.15
275	Manufacture of domestic appliances	5.05	303.98
279	Manufacture of other electrical equipment	8.85	162.65
281	Manufacture of general purpose machinery	11.83	162.72
282	Manufacture of special-purpose machinery	15.09	88.76
292	Manufacture of bodies (coachwork) for motor vehicles; manufacture of trailers and semi-trailers	2.90	61.92
293	Manufacture of parts and accessories for motor vehicles	42.89	0.00
309	Manufacture of transport equipment n.e.c.	2.70	145.11
310	Manufacture of furniture	2.28	180.53
321	Manufacture of jewellery, bijouterie and related articles	1.11	52.36
324	Manufacture of games and toys	0.09	0.00
325	Manufacture of medical and dental instruments and supplies	5.00	403.02
329	Other manufacturing n.e.c.	5.38	105.94
351	Electric power generation, transmission and distribution	413.90	129.47
	MANUFACTURING	586.10	124.90
	GENERAL INDEX OVERALL	1000.00	126.79

TABLE A-5: USE BASED INDEX OF INDUSTRIAL PRODUCTION

CATEGORY	WEIGHT	APRIL	MAY	JUNE	AVG. 1 st QTR. REVISED	JULY	AUG.	SEPT.	AVG. 2 nd QTR. PROVISIONAL
PRIMARY GOODS	432.21	41.92	70.98	93.51	68.81	74.95	163.89	145.41	128.08
CAPITAL GOODS	163.48	76.31	76.12	77.63	76.69	72.82	73.99	71.56	72.79
INTERMEDIARY GOODS	20.59	106.7	88.21	81.47	92.13	134.54	73.54	118.68	108.92
CONSUMER DURABLE GOODS	184.70	117.32	127.68	117.25	120.75	121.24	112.11	99.28	110.88
CONSUMER NON DURABLE GOODS	199.02	177.66	192.22	181.51	183.79	184.27	180.76	189.89	184.97
OVERALL	1000.00	89.82	106.78	112.56	103.05	106.13	141.13	133.12	126.79